

CITY OF GREELEY LAND USE APPLICATION/USE BY SPECIAL REVIEW

Emergency Response and Fire Protection Plan

A comprehensive and complete Emergency Response Plan will be submitted to the City of Greeley, which is a site-specific review of the risks to structures and land uses in the immediate vicinity, and addresses the risks presented by the proposed facility while considering the setbacks or distances. PDC will comply with all applicable sections of the 2018 International Fire Code, as amended and adopted by the City of Greeley and Greeley Fire Protection District:

Section 5706.1	General	Section 5706.3.2	Waste Control
Section 5706.3	Well Drilling and Operating	Section 5706.3.3	Sumps
Section 5706.3.1	Location	Section 5706.3.4	Prevention of Blowouts
Section 5706.3.1.1	Storage tanks and sources of Ignition	Section 5706.3.5	Storage Tanks
Section 5706.3.1.2	Streets and Railways	Section 5706.3.6	Soundproofing
Section 5706.3.1.3	Buildings	Section 5706.3.7	Signs
COGCC Rule 912	Spills and Releases	Section 5706.3.8	Field Loading Racks

Per the Greeley Fire Department:

- **Greeley, Colorado – Municipal Code / Title 24- Development Code / Chapter 11.-Supplemental Standards / Sec. 24-1102.c.5.(c) Adequate blowout prevention equipment shall be provided for drilling operations and well servicing operations.**
- Enclosed flares shall be utilized during the drilling, completion, recompletion, reworking, production, repair, and maintenance of the pad site.
- Routine fire inspections are required during the different phases of operation and, at a minimum, an annual inspection, upon completion of the wells and production facilities. The Greeley Fire Department will coordinate and schedule these inspections.

The road leading to the Denali State 05N67W13 1-23 Pad/Facility and those contained within the pad will be designed and maintained to support fire apparatus and shall be provided with a surface to accommodate all weather driving capabilities. A circular turnaround shall be provided on site that is capable of allowing the turning around of all fire apparatus.

In addition to the above-referenced rules and regulations, PDC is also subject to COGCC Rules and Regulations pertaining to Fire Prevention and Protection.

PDC has support personnel in the field or on call at all times to provide technical assistance in fire prevention and elimination.

The following individuals may be notified at these numbers:

DESIGNATED OPERATOR
PDC Energy, Inc.

PDC 24 Hour Emergency Hot Line (877) 350-0169
Brian DeRose, Surface Land Supervisor (970) 342-0135

CITY OF GREELEY LAND USE APPLICATION/USE BY SPECIAL REVIEW

(A) GENERAL INFORMATION

The purpose of the Emergency Response Plan is to provide procedures to cover emergency conditions that may arise during the development of oil and gas resources. The procedures contain the policies applicable to facility emergencies.

The following information can be vital during emergencies. It may be used by outside agencies as well as company employees and contract labor to help secure a speedy recovery from an emergency situation:

PDC Office Address

PDC Energy, Inc.
1775 Sherman Street, Suite 3000
Denver, Colorado 80203

Landman, Operations Manager, Safety Manager

Brian DeRose, Surface Land Supervisor (970) 342-0135
Darin Spitzer, Surface Landman (970) 459-7766
Wes Hudkins, Production Manager (970) 573-0408
Jason Thron, EH&S Manager (303) 831-3900

Type of Facility

Oil and Gas Production Facility

Location

SESW SECTION 13, TOWNSHIP 5 NORTH, RANGE 67 WEST, 6TH P.M
Weld County, Colorado

The location will be accessed as follows:

Traffic for drilling, completions, flowback, and initial production operations will be routed 50% to the north and 50% to the south from the access point on County Road 25/95th Avenue.

Operator

PDC Energy, Inc.
1775 Sherman Street, Suite 3000
Denver, Colorado 80203
Brian DeRose, Surface Land Supervisor
Cell: (970) 342-0135

Corporate Manager in Charge of Facility

PDC Energy, Inc.
1775 Sherman Street, Suite 3000
Denver, Colorado 80203
Wes Hudkins
(970) 573-0408

CITY OF GREELEY LAND USE APPLICATION/USE BY SPECIAL REVIEW

Tank and Piping Inspections

All tanks and above ground piping are visually inspected on a daily basis for leakage, malfunction of seals, and other problems. Inspections of all storage tanks are made by PDC personnel or contractors and reported to its headquarters. All storage tank material and construction comply with API specifications for hydrocarbon storage. All tanks shall be appropriately labeled indicating the material contained within the tank(s).

Spill Containment

Tank berms are steel berm rings and are sized to contain 150% of the volume of the largest tank in the containment area. The inside of the tank berms are lined with impermeable and sealed material to prevent any leaks from leaving the containment. PDC operators or contract operators are equipped with spill cleanup kits for minor spills. Minor and major spills will be immediately reported to the Operations Superintendent and President of PDC in accordance with the SPCC plan. Berms will be inspected on a weekly basis and within forty-eight (48) hours of a precipitation event.

Entrance/Exit Driveways

The access to the Denali State 05N67W13 1-23 Pad/Facility will serve as both the entrance and exit. The fire code official shall have the authority to require an increase in the minimum access widths where they are inadequate for fire or rescue operations.

The access road, with one permanent access point from County Road 25, is 30 feet in width. The lease access road will be constructed of a compacted class 6 road base with a minimum depth of 4 inches at 80% compaction and surfaced so as to provide all-weather driving capabilities. The turnaround for the tank battery will be approximately 30 feet on the north side, 60 feet on the east side, 30 feet on the south side and 60 feet on the west side. These dimensions allow for safe access of tanker trucks and emergency equipment. The access road shall be graded to provide simple drainage from the roadway and allow for cross drainage by means of an adequate culvert pipe. The lease road shall be maintained so as to provide a roadway passable for emergency vehicles and shall be generally rut free. Measures will be taken to control mud on local roadways.

Signs will be posted in accordance with the City of Greeley, the Greeley Fire District, and the COGCC.

Security

All proper warning signs and equipment guards will be installed. At this time there are no plans to have locked security gates. If the need should arise in the future a lockbox with a key will be on location so that the fire district has access in an emergency.

(B) TRAINING

All facility personnel are trained in the operation and maintenance of equipment to prevent or control spills and are versed in the applicable pollution control laws, rules, and regulations. Company vehicles that visit the location will be equipped with shovels and materials necessary to contain spills.

CITY OF GREELEY LAND USE APPLICATION/USE BY SPECIAL REVIEW

(C) EMERGENCY CONTACT LIST

Following is a list of PDC personnel and emergency organizations that may be contacted in the event of an emergency occurring at the proposed Denali State 05N67W13 1-23 Pad/Facility.

All emergencies shall be reported immediately to the appropriate Supervisor. In the event the Manager(s) cannot be reached, any of the following may be notified at their office number during normal working hours or at their home/cell number if during other than normal working hours.

<u>Name</u>	<u>Phone</u>
PDC Emergency Hotline	(877) 350-0169 – 24 Hour
Brian DeRose	(970) 342-0135

<u>City and County Agencies</u>	<u>Emergency</u>
---------------------------------	------------------

Greeley Fire Department	911
Non-Emergency (970) 350-9504	

Greeley Police Department	911
Non-Emergency (970) 350-9600	

To report emergencies, call 911 for fires or spills that cannot be contained by employees.

Weld County Office of Emergency Management (970) 304-6540	911
--	-----

Weld County Sheriff Department Non-Emergency (970) 356-4015	911 - Contact as emergencies dictate.
--	---------------------------------------

Tri-County Health Department Office: (303) 220-9200	Product or Wastewater Spill
--	-----------------------------

<u>State Agencies</u>	<u>Emergency</u>
-----------------------	------------------

Colorado Oil & Gas Conservation Commission (303) 894-2100	As needed
--	-----------

Colorado Department of Public Health and Environment Office: (303) 377-6326 Emergency: (877) 518-5608	As needed
---	-----------

Division of Oil and Public Safety Office: (303) 318-8547	As needed
---	-----------

Colorado Public Utilities Commission Gas Pipeline Safety Division Office: (303) 894-2851	As needed
--	-----------

CITY OF GREELEY LAND USE APPLICATION/USE BY SPECIAL REVIEW

Colorado State Highway Patrol 911
Non-Emergency (970) 506-4999

<u>Federal Agencies</u>	<u>Emergency</u>
Environmental Protection Agency - Region VIII	As needed
Emergency Response Number: (303) 293-1788 (24 hours)	

National Response Center	As needed
Emergency Response Number: (800) 424-8802	

(D) EMERGENCY RESPONSE PROCEDURES

PDC has an Emergency Plan. A copy is available at their Headquarters. The Safety Supervisor and the Operations Manager are to assume full responsibility for implementing the Emergency Response Plan. Implementation will depend upon the type of emergency.

(E) CONTINGENCY PROCEDURES/SPCC PLANS

A Spill Prevention Control and Countermeasure (SPCC) Plan is maintained at PDC's Headquarters. This would be referred to if a major product or produced water release occurs.

(F) RELEASE OF INFORMATION

Release of information is the responsibility of PDC's Headquarters.

<u>Name</u>	<u>Office Phone</u>
Brian DeRose	(970) 342-0135



DENALI STATE
5N67W13 1-23 PAD

WELD COUNTY, COLORADO
S.13, T.5N., R.67W

Location Address:

27027 CR 25, Greeley CO 80634

LAT/LONG
40.39458, -104.84261 (NAD 83)

All Emergencies will be reported
through 911

Notifications

1. PDC Energy Emergency Response:
24 Hour Hotline: 877-350-0169
2. Weld County Public Safety Communications:
911, 970-350-9600 (non Emergency)
3. Greeley Fire:
911, 970-350-9504 (non Emergency)
4. Weld County OEM:
970-304-6640

Critical Receptors

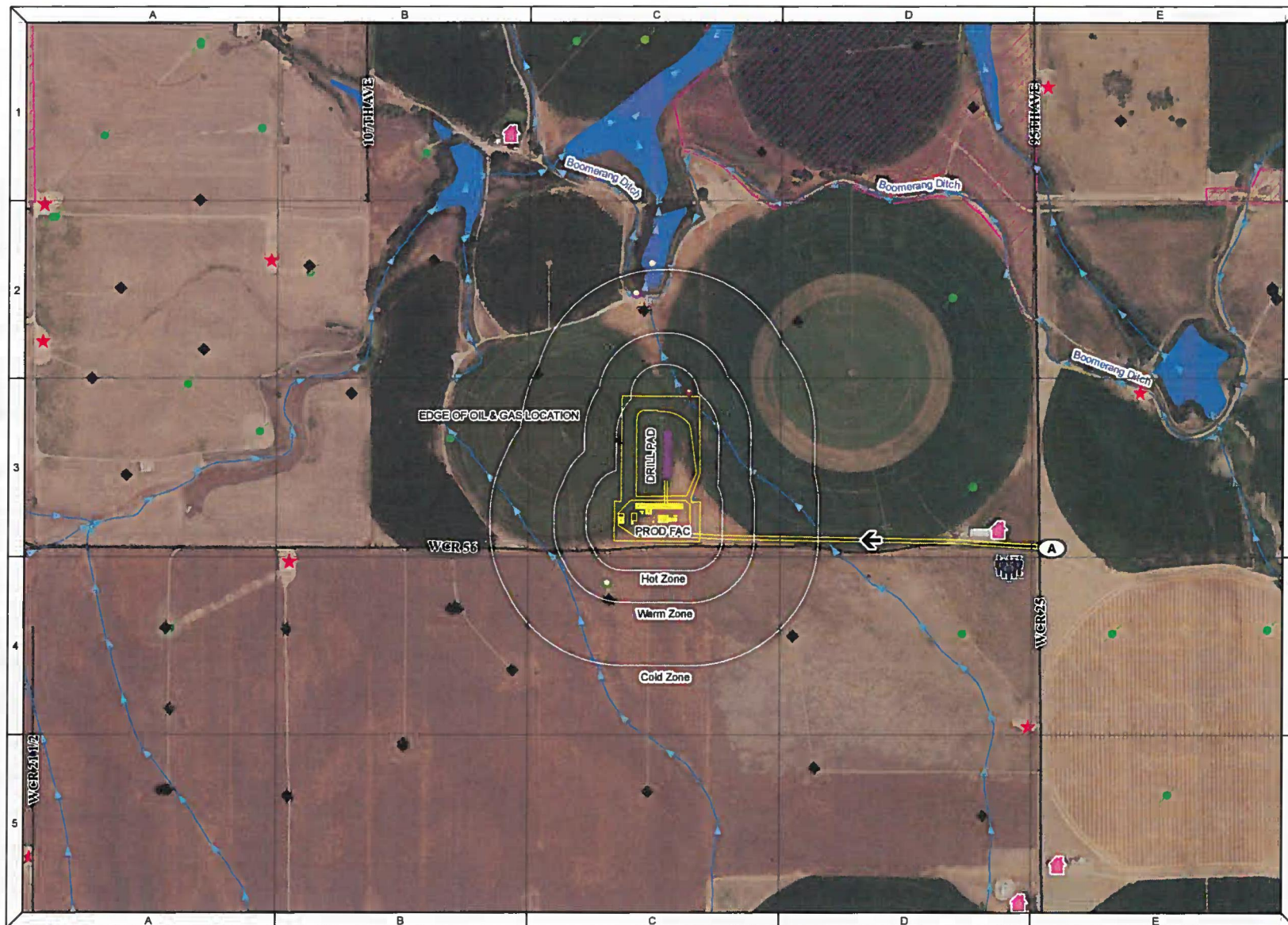
- Surrounding Tank Battery / Combustor
- Surrounding Ditch
- Surrounding Existing Well
- Surrounding Pond

Note: This Tactical Response Card is a reference tool and is intended to provide guidance during an actual event or exercise. Placement of resources may need to be adjusted according to environmental variables. It is the responsibility of emergency response personnel to be trained in response and to be able to make adjustments to the card as needed.

ERG Zone (800 meters) Not Shown

Legend

(A) SITE ACCESS	FIRE STATION
PAD	WATER TREATMENT FACILITY
PROPOSED WELL HEAD	RIVER/DITCH
PRIMARY MUSTER POINT	RAILROAD
PRIMARY INGRESS/EGRESS	POND/LAKE
ADDRESS POINTS	SUBDIVISION
PLUGGED & ABANDONED WELL	
EXISTING WELL	
TANK BATTERY/ COMBUSTOR	
WIND SOCK	
FIRE HYDRANT	
PARK	
SCHOOL	
POLICE STATION	



THIS MAP IS A COMPILATION OF PUBLICLY AVAILABLE DATA. THE ACCURACY AND COMPLETENESS OF SAID DATA HAS NOT BEEN VERIFIED BY LAT48, INC. EXISTING CONDITIONS MAY DIFFER FROM WHAT IS SHOWN.

DATUM: NAD 1983 NRS32087 STATE PLANE COLORADO NORTH PIPS 5661 FT US

0 500 1,000 Feet



Date: 8/18/2022
Project #: 2020001
Sheet 1 of 2



FIRE DEPARTMENT RESPONSE GUIDELINES

Command FIRE DEPARTMENT RESPONSE GUIDELINES

COMMAND

- Establish initial command post near the oil & gas location entrance.
- Position should provide a clear view of the entire scene
- Advise responding units and resources to stage near the location entrance.
- Locate operator lease sign on location (located at the entrance /site access)
- If industry personnel are not on location, call the 24-Hour Emergency Contact number located on the sign.
- Establish unified command with operator on-site liaison
- Develop incident action plan with the operator to mitigate incident
- Strategy - Always defensive unless a life safety need is identified!**

INCIDENT STABILIZATION

- Implement Hazardous Materials response protocols
- All personnel operating in hazard zones should be in appropriate PPE, to include a personal mobile air monitoring device
- Establish Hot, Warm, Cold Zones, and ERG zones
- Exposure Concerns --- Equipment, nearby structures, neighborhoods, roadways, etc.
- Monitor weather conditions, especially wind direction
- Air monitoring for vulnerable areas and locations around the incident.
- Conduct evacuations of citizens, bystanders, and resources at risk.
- Identify and address any water supply and/or foam requirements necessary to mitigate the incident

SPECIAL CONSIDERATIONS

- If evacuations are needed, coordinate with Weld County OEM before ordering an evacuation to establish evacuation routes, shelters, shelter in-place and to utilize IPAWS (reverse 9-1-1).
- Request mutual aid apparatus and equipment asap to minimize operational delays
- Consider and address any potential impacts to critical receptors identified near the location.
- Consider requesting a HazMat Team if needed to assist with mitigation.
- Consider requiring a fire investigation for any fire and/or explosion.
- Keep the public and stakeholders informed of response activities.
- Notify FAA if air Traffic restrictions are needed (requested through OEM) **(very large incident)**

INDUSTRY RESPONSE OBJECTIVES

Ensure safety of the public, first responders, employees, and contractors. Minimize impact to the environment and local community. The following response objectives checklist shall be followed:

SAFETY – PROTECT LIFE

- Evaluate and account for all personnel
- Isolate all potential ignition sources
- Establish site control (safe perimeter and evacuation routes)
- Contact emergency services as needed (911, Fire, LEPC)
- Identify hazard(s) of emitted material (obtain SDS)
- Implement air monitoring around impacted area
- Continually assess site hazards/risks

RESPONSE – INCIDENT STABILIZATION

- Notify internal personnel and agencies
- Assign on-site liaison to the incident commander
- Establish a unified command post and field communications
- Establish Hot, Warm, Cold Zones, and ERG zone
- Identify and establish staging areas to support response operations
- Activate emergency shutdown procedures (ESD)
- Activate response action contractors for equipment and manpower as needed (e.g. Well Control, spill/HazMat clean-up, etc.)

ENVIRONMENTAL – PROTECT THE ENVIRONMENT

- Identify, prioritize, and protect environmentally sensitive areas
- Verify if water has been impacted
- Implement waste handling, disposal and decontamination procedures as needed
- Contain and recover spilled materials
- Notify appropriate agencies

SPECIAL CONSIDERATIONS

- Keep the public and stakeholders informed of response activities.

FACILITY INFORMATION

Well Pad Liquid Storage:

- Oil (BBL) – BBL
- Water (BBL) – BBL
- *1 Barrel (BBL) = 42 Gallons

Specific Facility Hazardous Conditions: (chemicals stored on site)

Drilling		BBLs	Tanks
		BBLs	Tanks
		BBLs	Tanks
		BBLs	Tanks

Storage Location

-
-
-

Completions		BBLs	Tanks
		BBLs	Tanks
		BBLs	Tanks
		BBLs	Tanks

Storage Location

-
-
-

Flowback		BBLs	Tanks
		BBLs	Tanks
		BBLs	Tanks
		BBLs	Tanks

Storage Location

-
-
-

Production		BBLs	Tanks
		BBLs	Tanks
		BBLs	Tanks
		BBLs	Tanks

Storage Location

-
-
-

Is Water Supply Available on Location?

Fire hydrants
Water Storage Tanks