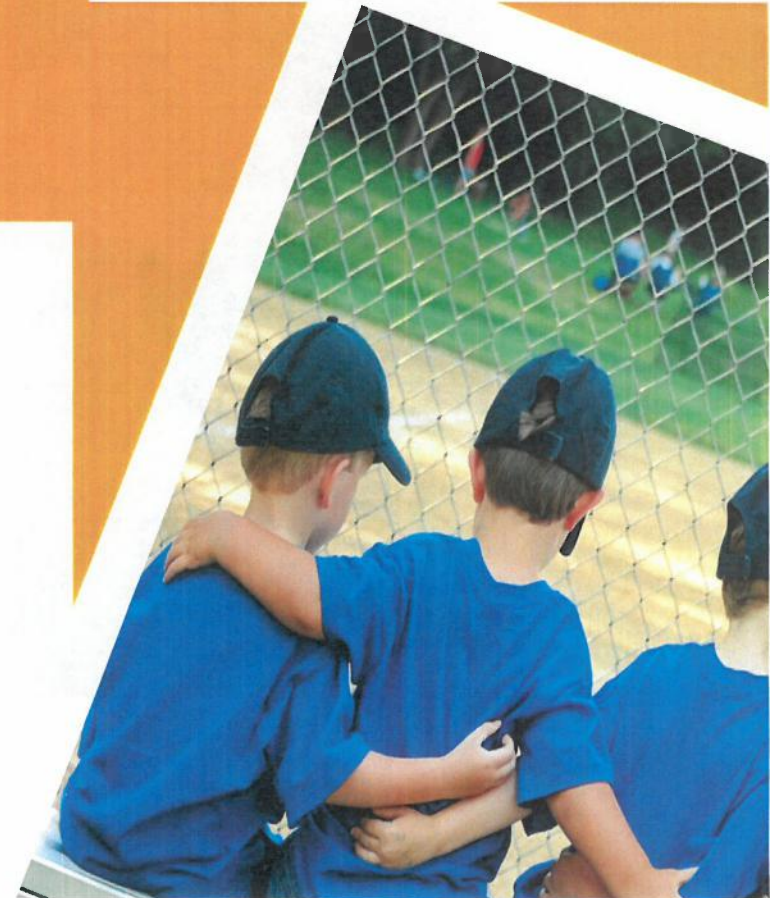


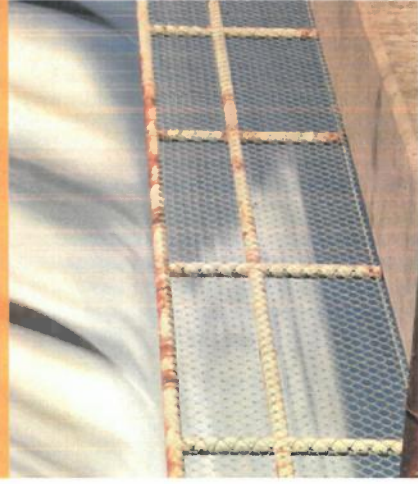
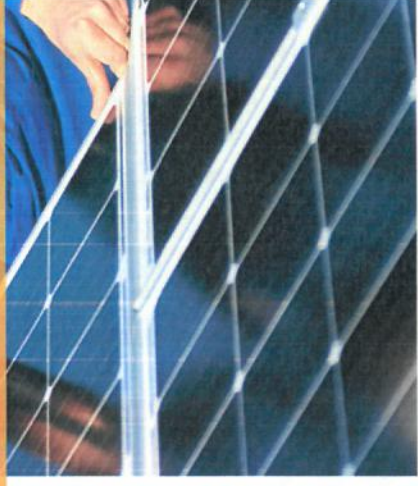
Community Choice Aggregation Overview For Grass Valley

January 20, 2022





What is a CCA?



What is a CCA?

- CCA stands for Community Choice Aggregation
- Authorized in California by Assembly Bill 117 (Migden, 2002)
- A CCA allows any city, county, or combination thereof to form an entity (JPA) to take over the responsibility for purchasing power for their community

How do CCA's Work?

- Should a CCA be established, one big thing changes and three things remain the same



How an Investor-Owned Utility works?

Utility purchases power

Utility maintains transmission lines

Utility provides customer service

Utility bills customer

How a Community Choice Aggregation works

CCA purchases power

Utility maintains transmission lines

Utility/Pioneer provides customer service

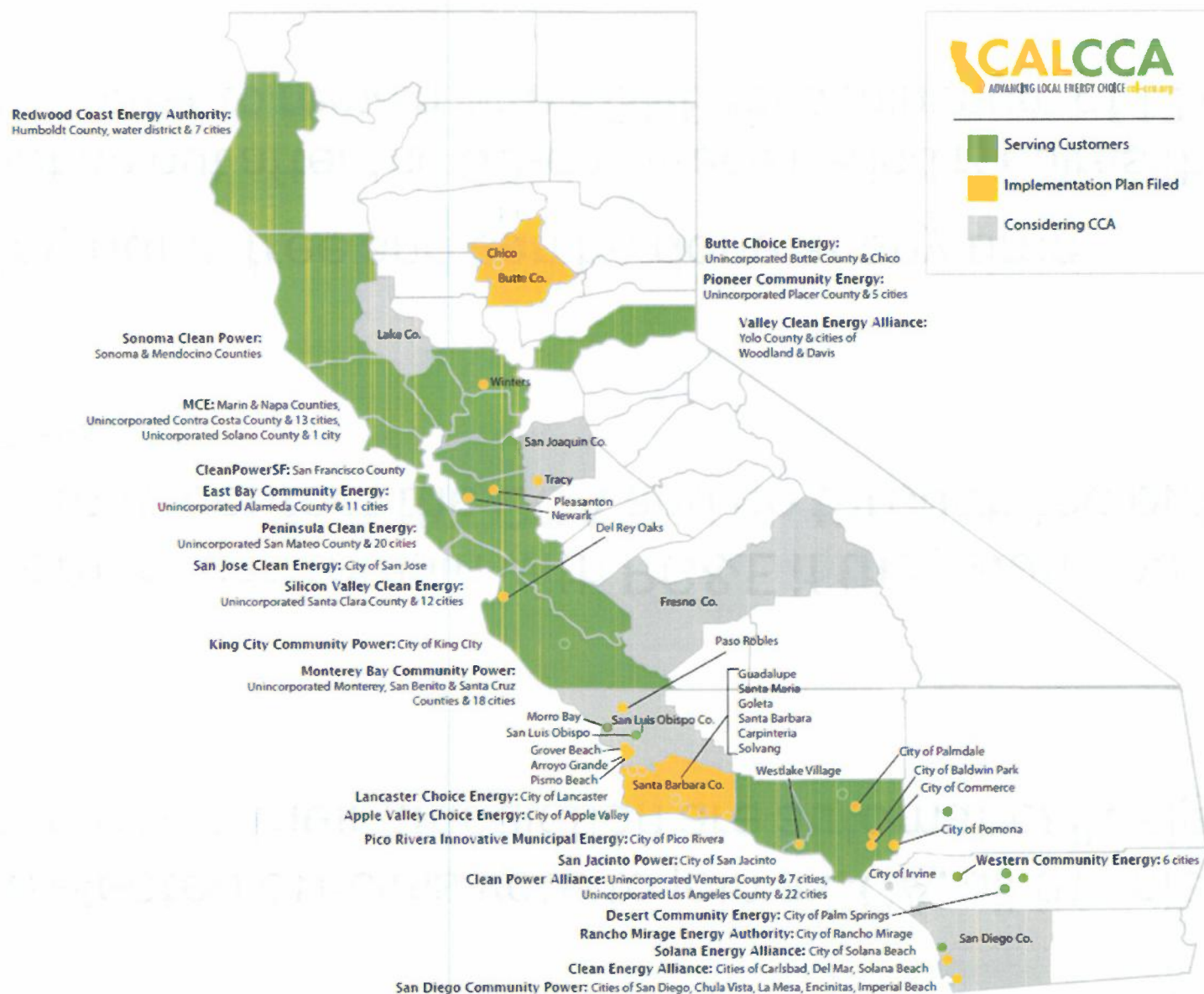
Utility bills customer



Who Joins?

- Once elected officials vote to join a CCA, all the electric customers in their jurisdiction are automatically signed up
- Customers can remain with PG&E if they want, but its up to them to contact the CCA and go through the opt-out process
- Opting out is free and can be done at any time
 - Opting out after the 60-day grace period requires the customer to remain with PG&E for a minimum of 12 months

Statewide CCA's



Options for Grass Valley

01

Join Pioneer

*Advantages of reduced risk and start-up capital
Disadvantage is 1 of numerous Board*

02

Form your own JPA

*Advantage is you control JPA
Disadvantage is start-up capital, operational
risk and need of outside financing*

03

Dept of City

*Advantage is you control Department
Disadvantage is General Fund at risk*

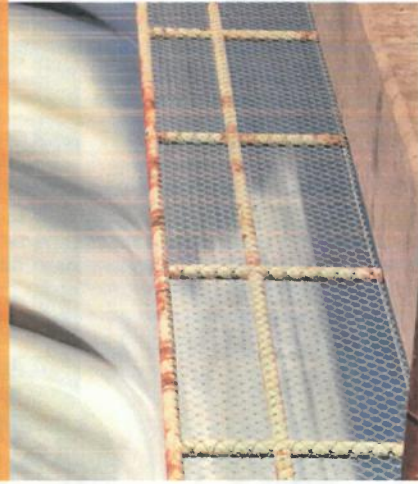
04

Do Nothing

*You don't have to do anything.
Many off ramps in the process before power
is procured on your behalf.*



Benefits to the City?



Benefits to Grass Valley



- Local Control
 - Energy Procurement
 - Setting of Rates (Discount to PG&E is goal)
 - Programs
 - Creation of Jobs
 - Economic Development
 - Environmental/Social Goals
 - City provides a choice for residents and businesses in energy provider
- PG&E owned by shareholders, CCA's owned by constituents/ratepayers

Next Step



- Pioneer returns to the Council in two weeks to discuss:
 - Who is Pioneer?
 - The benefits to the City to join a JPA
 - The process and timeline to join
- Risk to the general fund is \$15,000 or 1/2 the cost to produce an impact assessment study
 - Pioneer pays the other 1/2

Thank You



Don Eckert, Executive Director
Pioneer Community Energy
916-251-8575

don.eckert@pioneercommunityenergy.ca.gov

www.pioneercommunityenergy.ca.gov