

Nevada County
Local
Agency
Formation
Commission

LAFCo
950 Maidu Avenue
P.O. Box 599002
Nevada City, CA 95959-7902

Phone: 530-265-7180

E mail: lafco@nevadacountyca.gov
<https://www.mynevadacounty.com/907>

Josh Susman, Chair
Public

Bob Branstrom
Cities

Hardy Bullock
County

Ricki Heck
Districts

Sue Hoek
County

Gordon Mangel, Vice-Chair
Districts

Jan Zabriskie
Cities

Erin Minett
Public Alternate

Gary Peterson
Cities Alternate

Lisa Swarhout
County Alternate

Rich Johansen
Districts Alternate

SR Jones
Executive Officer

P. Scott Browne
Legal Counsel

Deborah Gilcrest
Clerk/Analyst

City Council
City of Grass Valley
125 E. Main Street,
Grass Valley, CA 95945

RE: 2024 City of Grass Valley Sphere of Influence Update Public Review
Period

Thank you for the opportunity to provide an Informational Item at your March 12, 2024 City Council meeting related to Nevada County LAFCo's 2024 update of the Sphere of Influence Plan for the City and the upcoming Public Comment Period for the Plan.

As background, a Sphere of Influence (SOI) is a plan for the probable physical boundaries and service area of a local agency, as determined by the Local Agency Formation Commission (LAFCo). Changes to an agency's SOI can be initiated by LAFCo through a comprehensive update, or by an agency through an application for an annexation and sphere amendment for a proposed development project. LAFCo policy requires sphere plans to include annexation phasing by designating sphere areas for Near Term annexation and for Long Term annexation. In addition, Nevada LAFCo policies provide for designation of an Area of Interest, which is a geographic area beyond the sphere in which land use decisions or other governmental actions of another local agency impact directly or indirectly upon the subject local agency.

The City of Grass Valley 2024 Sphere of Influence Plan is an update to the 2011 Sphere Plan, and there are four changes proposed in the update, as detailed below.

1. **North Star property:** 325 acres in the southern portion of this property would be transferred from the Long Term to the Near Term Sphere.
(2 unimproved parcels)

2. **Sierra Pines properties:** 24 acres adjacent to City boundaries and the Sierra Pines Mobile Home Park in the Brighton Street area transferred from the Area of Interest to the Near Term Sphere. (1 improved parcel and 1 unimproved parcel)
3. **Kenny Ranch properties:** 365 acres located along Rough and Ready Highway transferred from the Long Term Sphere to Area of Interest. (1 improved parcel and 11 unimproved parcels)
4. **Nevada Union High School:** 67 acres transferred from the Near Term to the Long Term Sphere (5 improved parcels)

The 30-day Public Comment Period will begin on Friday, **March 15, 2024** and will conclude on Monday, **April 15, 2024**.

The 2024 City of Grass Valley Sphere of Influence (SOI) Plan and associated environmental review document can be downloaded from the LAFCo website at www.mynevadacounty.com/907, or can be viewed at the LAFCo office at the Eric Rood County Administrative Center in Suite 270. Please contact LAFCo staff at 530-265-7180 for more information or to make an appointment to view the documents.

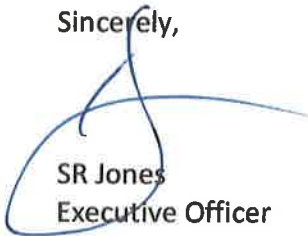
Please submit all public comments by postal mail or e-mail to the following:

LAFCO@nevadacountyca.gov

or

Nevada LAFCO
950 Maidu Avenue, Suite 270
Nevada City, CA 95959

Sincerely,

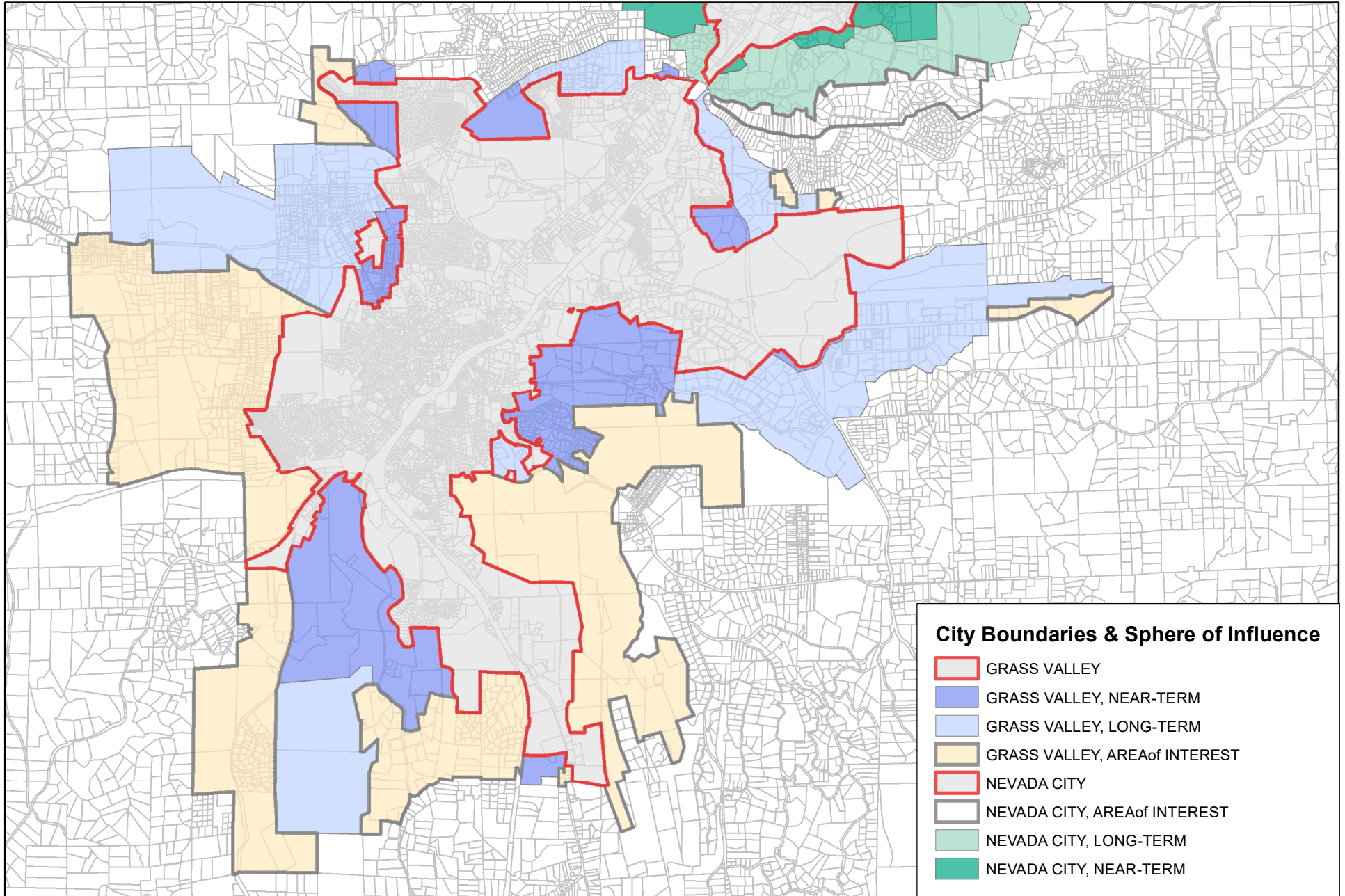


SR Jones
Executive Officer

ATTACHMENTS:

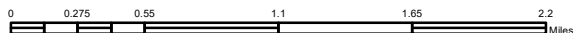
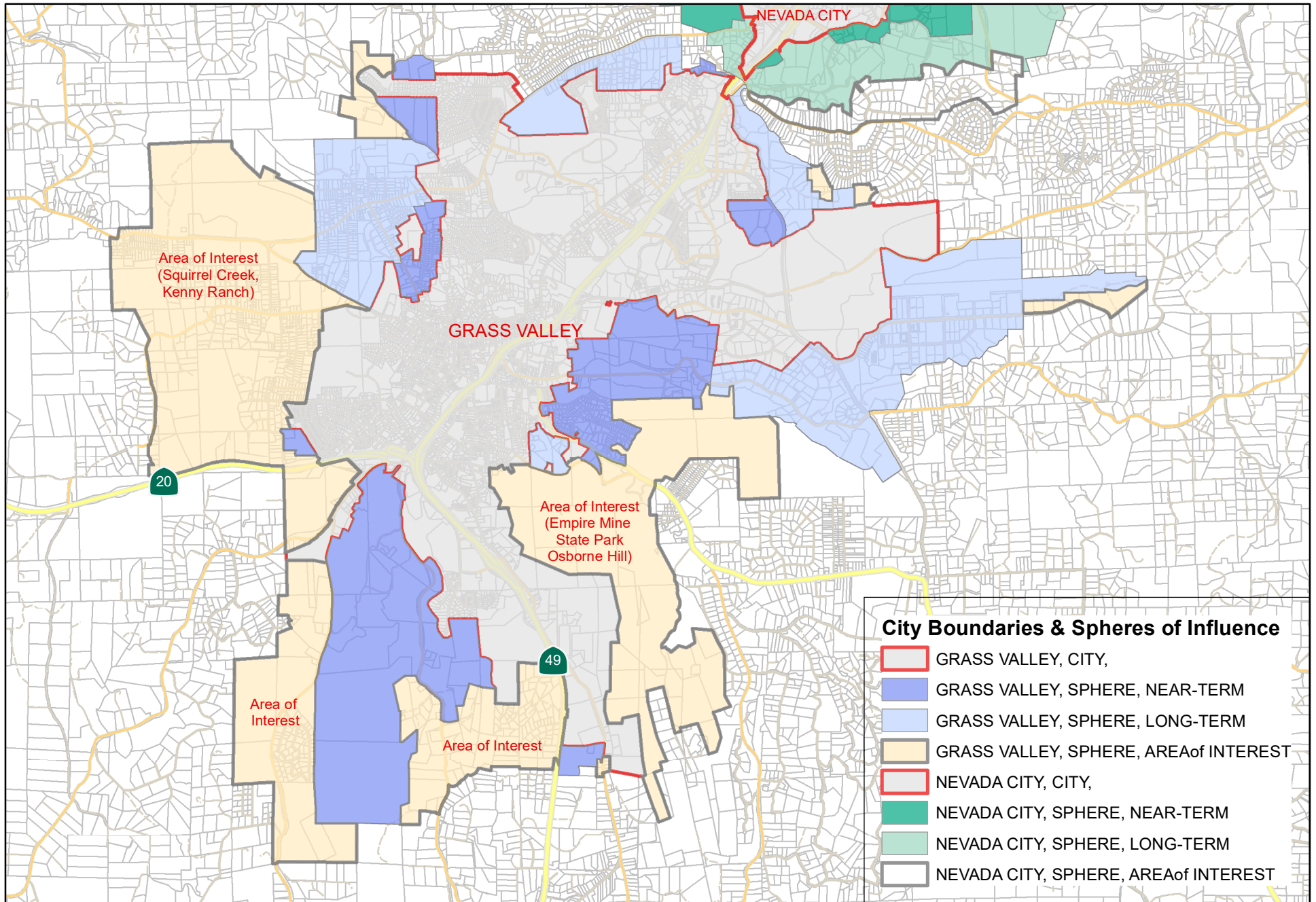
- 1) 2011 City SOI Map
- 2) 2024 Proposed City SOI Map
- 3) Map Showing SOI Changes

City of Grass Valley Boundaries and Sphere of Influence -- 2011 Update



0 0.275 0.55 1.1 1.65 2.2 Miles

City of Grass Valley Boundaries and Sphere of Influence -- 2024 Proposal



City of Grass Valley Boundaries and Sphere of Influence -- 2024 Proposed Changes

