

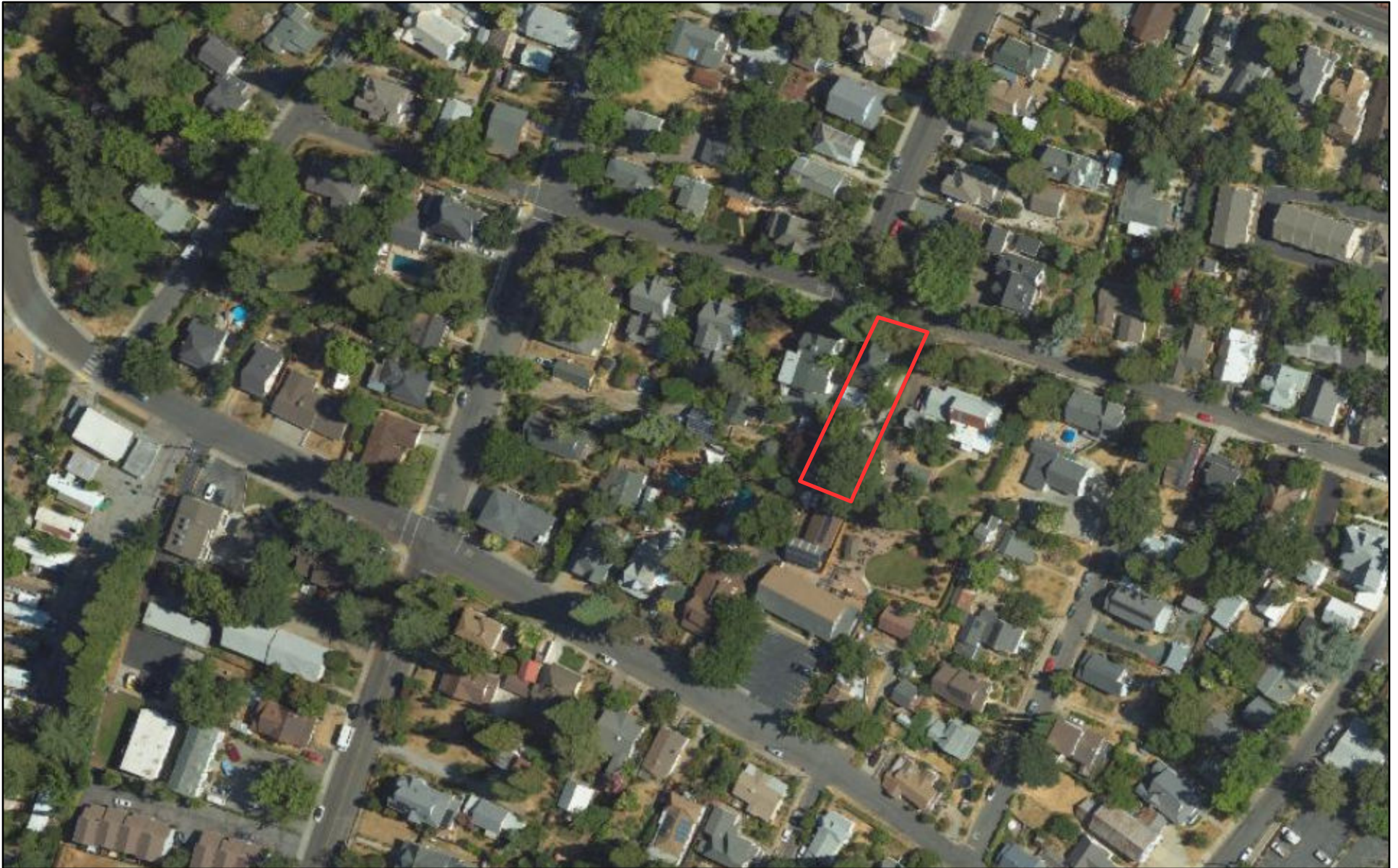
**439 Neal Street**  
**Development Review for Window Replacement on Historic**  
**Structure**

26PLN-0006

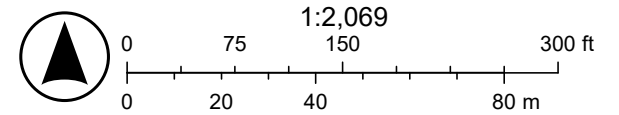
ATTACHMENT LIST

1. Vicinity Map
2. Aerial Map
3. Photo of existing street-facing windows
4. Applicant Statement
5. PlyGem Windows Brochure
6. Sears Roebuck Catalog

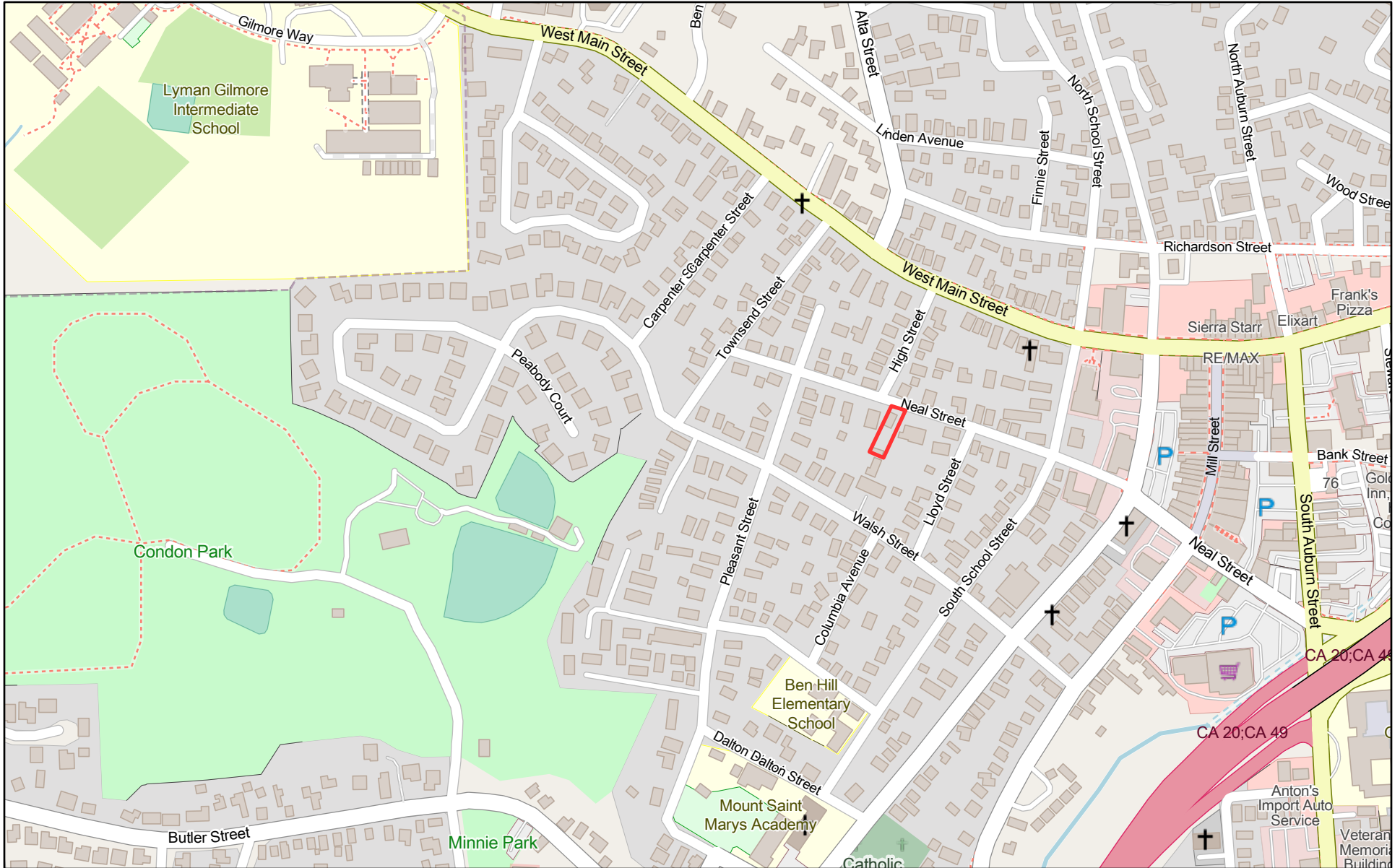
# 439 Neal - Aerial Map



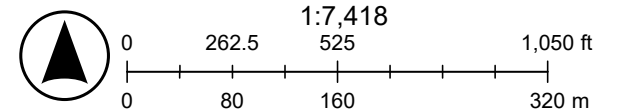
3/2/2026, 1:57:38 PM



# 439 Neal - Vicinity Map



3/2/2026, 2:05:02 PM



Map data © OpenStreetMap contributors, Microsoft, Facebook, Google, Esri  
Community Maps contributors, Map layer by Esri

Grass Valley Historical Committee

March 2, 2026

Dear Committee,

Quick request for window replacement on my converted Sears Craftsman home (originally kit-delivered 1920s bungalow). Proposing Ply Gem Classic Series single-hung vinyl—the exact dimensional match to original Sears factory windows.

Why authentic:

- Sears catalogs (1912-1932) shipped these fixed upper/operable lower single-hungs
- Matches 2-7/8" jambs, 1-3/8" rails, traditional profiles
- Preserves streetscape light patterns (4-over-1, 6-over-1 grids)

Not modern replacement—Sears-spec recreation. Passes CHP divided light tests + Title 24.

Docs attached: Sears catalog, Ply Gem specs.

Thanks!

Jaya Green

439 Neal St.

Grass Valley, CA 95945

530-277-4547



439



CLASSIC SERIES



A WHOLE NEW POINT OF VIEW.

E A S T

DOUBLE HUNG, CASEMENT,  
AWNING & SLIDING PATIO DOOR

**It's more than a window. It's a whole new point of view.** At Ply Gem Windows, we have a different view for the way the window business should be run. We believe you should have access to all of the top quality styles and brands across the country. That's why we've taken our entire portfolio of brands, brands that you know and trust, and given them one name – Ply Gem Windows. With this one name comes a lot of big advantages, starting with a national manufacturing and distribution network. Pair that with our commitment to customer service, sustainable practices and wide variety of window styles that fit all of your design needs, and you'll get the right window for every project and every budget. And, because we're part of the Ply Gem family, you know

you'll always have access to leading brands. Windows, doors, siding and accessories, stone veneer, fence and rail, rainware, shutters and designer accents, we have something for every project. We work with residential builders, remodelers, architects, distributors and dealers to help build sales. When you combine over 75 years of experience, industry-leading customer service, and trusted local relationships you've got a company you can count on. **Ply Gem. Building products.**

**Building success.**



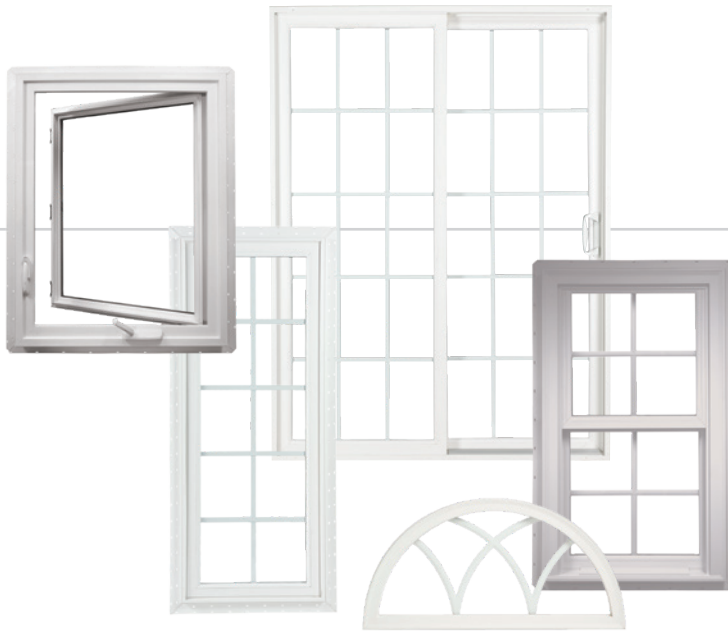


# PRO SERIES

W I N D O W S

## TABLE OF CONTENTS

Classic Double Hung .....	6
Classic Casement & Awning .....	8
Classic Sliding Patio Door .....	10
NFRC Thermal Performance Data .....	12
Explanation of Glass Packages .....	13
Low-E & ENERGY STAR® Information .....	14
Glass Options & Impact Product Information .....	15
Color & Hardware Options & Grille Styles .....	16
Grille Patterns.....	17
Architectural Shapes .....	18
Frame/Casing Options & Screens & Extension Jamb.....	19



**Uncompromising quality. Superior value.** There's one clear choice when it comes to finding the quality and value you want in windows – Ply Gem Windows Pro Classic Series. Our distinct product offerings provide you with the selection and craftsmanship you need to bring your next project to life. Our windows are designed to meet every need and every budget. Plus, with our service and support you'll be able to get the job done right the first time, every time.



A WHOLE NEW POINT OF VIEW.

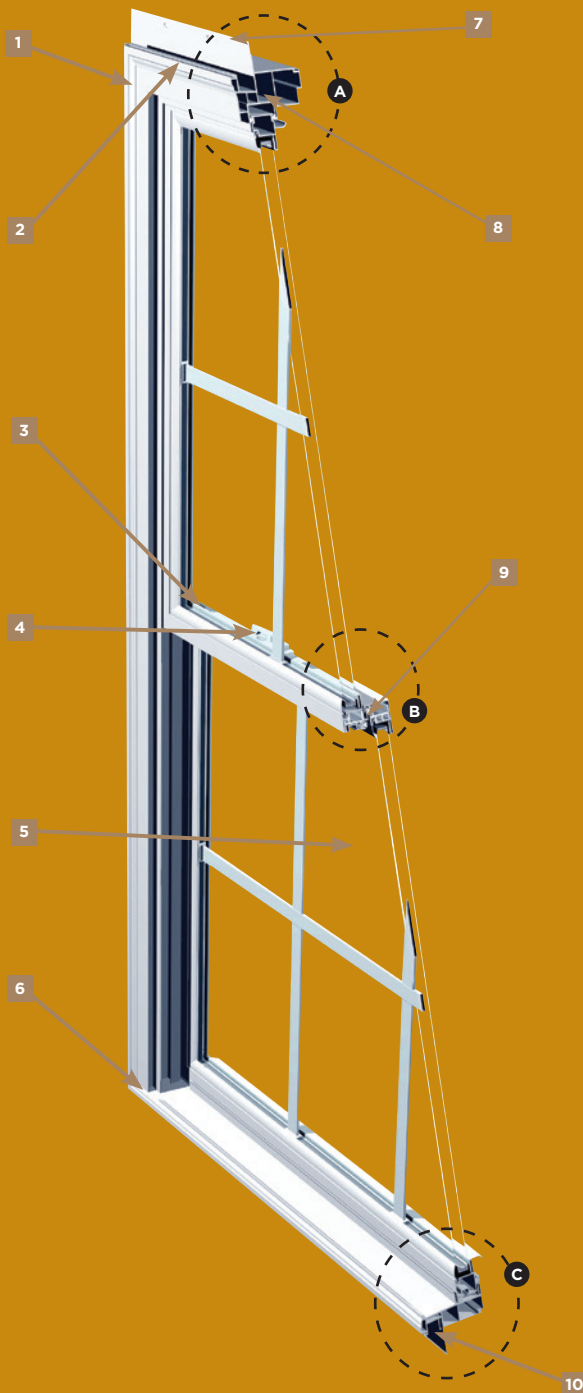


## CLASSIC DOUBLE HUNG

**PRO SERIES CLASSIC DOUBLE HUNG** windows help reflect your own personal style. Constructed with a traditional brickmould or 3/2" flat\* exterior (see page 19), they are available in singles, twins, triples, combinations, 30° and 45° angle bays, fixed and a wide selection of architectural shapes.



ASTM E330  
+/- DP50  
most sizes

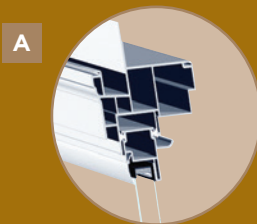


## FEATURES

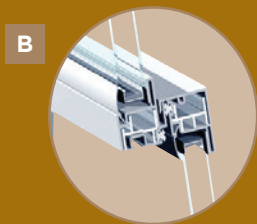
- 1 Classic brickmould profile provides an authentic sculptured appearance that matches traditional exterior millwork
- 2 Interior and exterior accessory grooves allow for easy accessory application
- 3 Both sash tilt in and remove for safe and easy cleaning of exterior glass
- 4 Weather-tight dual action sash lock provides security while sealing out the weather and sealing in your comfort
- 5 3/4" IGU glass systems with energy-efficient Warm Edge (standard) or Warm Edge+ (optional upgrade) available in Low-E or HP glass package options (see page 12 for details)
- 6 Low-profile sill nosing resembles a traditional wood window
- 7 Integral nailing fin with welded corners for simple and accurate installation
- 8 Maintenance-free multi-chamber PVC construction with fusion-welded corners for durability, weather-tight performance and beauty
- 9 Robust interlock satisfies forced entry requirements and improves structural performance
- 10 Integral 1/16" siding pocket with undersill trim leg allows for simple and secure siding installation



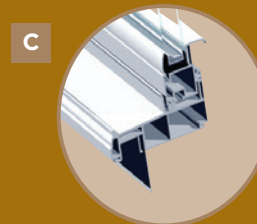
Our Classic vinyl double hung windows are taking quality and value to a whole new level. They come with a convenient tilting sash system that allows for easy cleaning. Integral mulls are available on twin and triple units providing a continuous head and sill for a sleek appearance and enhanced performance.



**A** Maintenance-free multi-chamber PVC construction with fully welded corners for durability and weather-tight performance



**B** Robust interlock satisfies forced entry requirements and improves structural performance

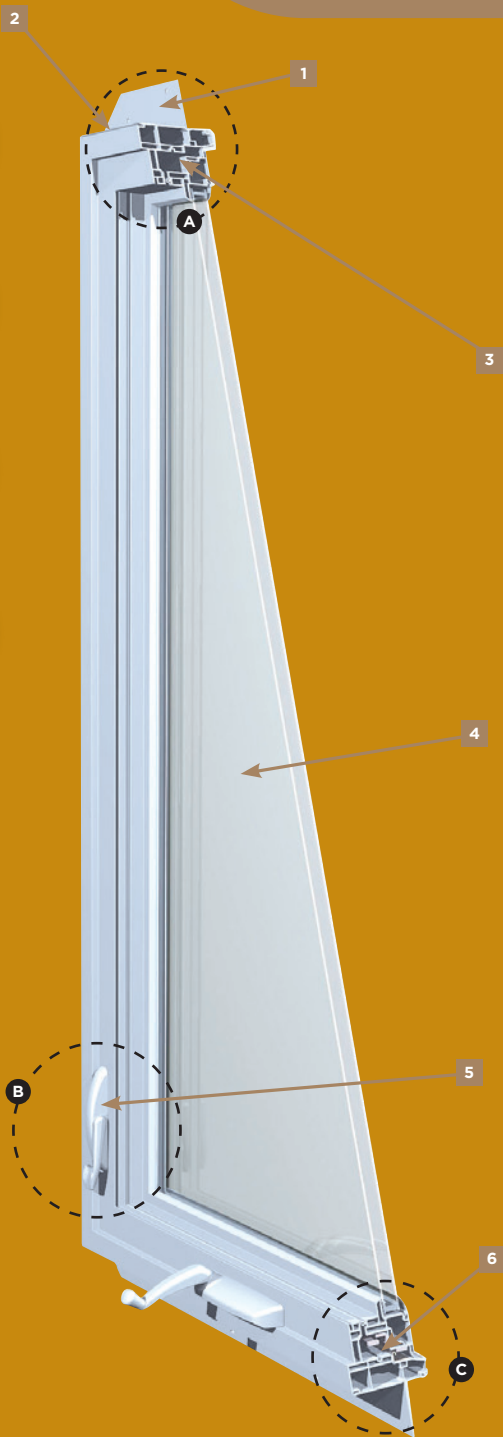


**C** Integral 1/16" siding pocket with undersill trim leg allows for simple and secure siding installation



## CLASSIC CASEMENT & AWNING

**PRO SERIES CLASSIC CASEMENT & AWNING** windows are available in singles, twins, triples, side lites, fixed, combinations, 30° and 45° angle bays, 4 and 5 unit bows and a wide variety of architectural shapes.

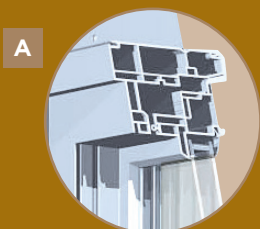


## FEATURES

- 1 Integral nailing fin with welded corners for simple and accurate installation
- 2 Interior and exterior accessory grooves for easy accessory application
- 3 Maintenance-free multi-chamber PVC construction with fusion-welded corners for durability, weather-tight performance and beauty
- 4 3/4" IGU glass systems with energy-efficient Warm Edge (standard) or Warm Edge+ (optional upgrade) available in Low-E or HP glass package options (see page 12 for details)
- 5 Single-handle multi-point locking system so you can easily secure your windows in one operation
- 6 Stainless steel hinge track and lock bar on all standard sizes
- 7 Split-arm gear operator for call sizes up to 3050 and dual-arm gear operator on larger units to ensure smooth operation when opening and closing your windows



Make your view one-of-a-kind with Classic casement & awning windows. They feature a weather-resistant stainless steel hinge track and an adjustable hinge to ensure smooth, precise operation. The sash opens a full 90° to make cleaning easy.



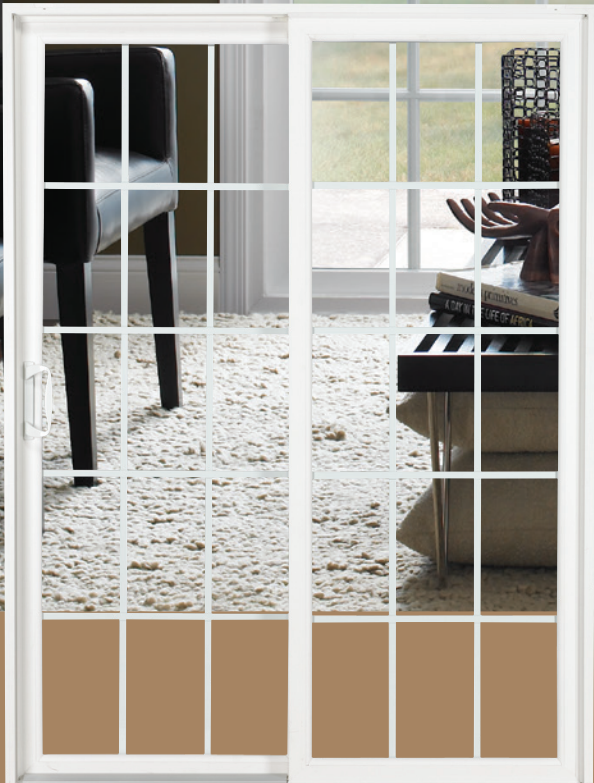
**A** Maintenance-free multi-chamber PVC construction with fully welded corners for durability and weather-tight performance



**B** Single-handle multi-point locking system so you can easily secure your windows in one operation



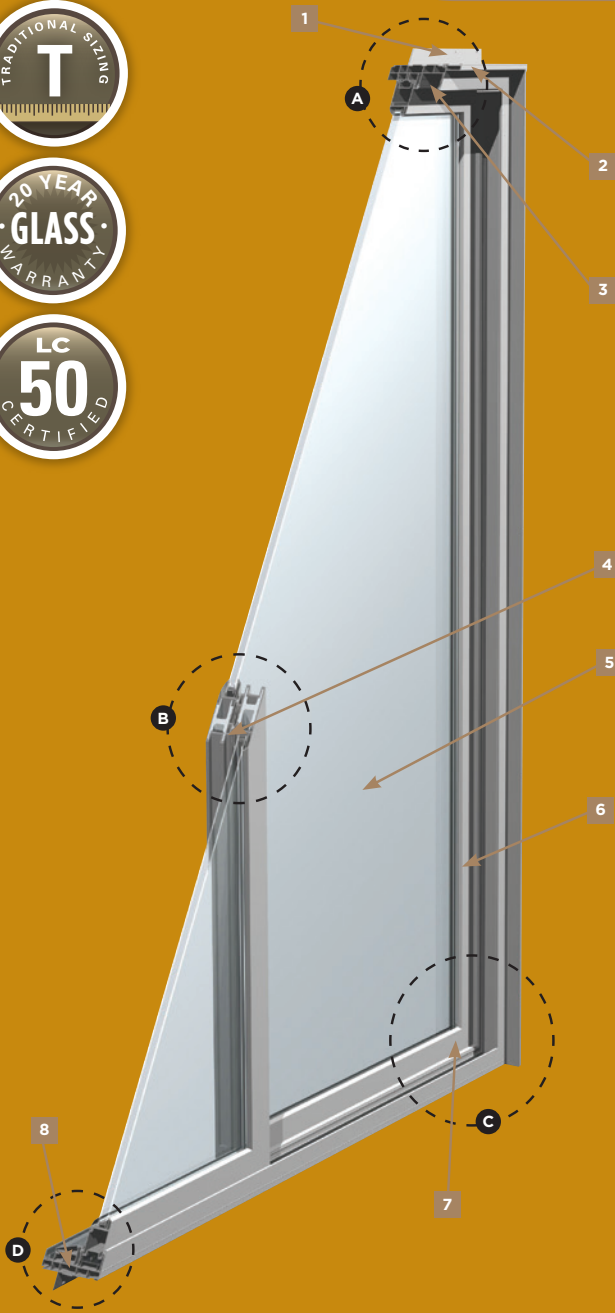
**C** Split-arm gear operator to ensure smooth operation when opening and closing your windows



## CLASSIC SLIDING PATIO DOOR

**PRO SERIES CLASSIC SLIDING PATIO DOORS** invite the style in. They are available with matching fixed panels, side lites, transoms and segmented transoms.

# CLASSIC SLIDING PATIO DOOR

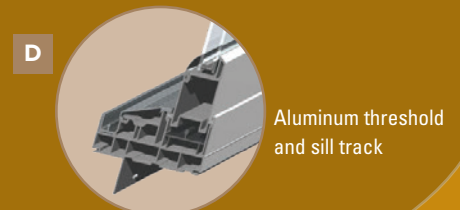


## FEATURES

- 1 Pre-punched nailing fin with fusion-welded corners for simple and accurate installation
- 2 Interior and exterior accessory groove for drywall return, extension jamb and exterior brickmould application
- 3 Maintenance-free multi-chamber PVC construction with fully welded corners for weather-tight performance
- 4 Self-centering interlock satisfies forced entry requirements
- 5 3/4" IGU tempered glass systems with energy-efficient Warm Edge (standard) or Warm Edge+ (optional upgrade) available in Low-E or HP tempered glass package options (see page 12 for details)
- 6 Field reversible panels for simple on-site conversions (8-0 height is not reversible)
- 7 Simple roller adjustment access through end of panel ensures smooth operation
- 8 Aluminum threshold and sill track for enhanced durability



One door opens up all kinds of possibilities. Our Classic sliding patio doors feature a unique design that allows for simple field reversibility before or even after installation. They are constructed with full-perimeter weatherstripping for a tight and consistent seal. Plus, you can pick from a variety of optional features including exterior handles with or without a keyed lock, coastal hardware or an ADA compliance kit for 6-0 wide doors with an ADA handle and ramps, and coastal hardware.



1. Optional Warm Edge+ spacer upgrade for enhanced performance. 2. Optional Low-E glass packages for better performance, see page 12 for details. 3. Optional HP glass packages combines Low-E with argon gas fill for high performance, see page 12 for details. 4. Impact Rated units are available in select sizes and configurations, see page 14 for details. 5. Optional coastal hardware available. 6. Americans with Disabilities Act (ADA) compliant accessibility upgrade package available.

# WHAT IS LOW-E?

Low-E glass has a secondary, very thin metallic dual layer coating. This allows the sun's heat and light to pass through the insulating glass, but, at the same time, actually works to reflect radiant heat back toward its source. Since Low-E coating reflects radiant heat waves, it helps keep your home warmer in the winter by trapping radiant heat and cooler in the summer by blocking it from your home. Low-E<sup>SC</sup> is optimized for warmer climates by applying two heavier layers, through a patented process, resulting in blocking 73% of the sun's radiant heat from entering your home while providing superior insulation in cooler weather to save you energy year-round.

Our *Interior Surface Low-E* is engineered to have the characteristic window manufacturers and homeowners need most — lower U-Factor— and is applied to the surface of the glass you can touch inside your home, providing increased comfort and improved energy savings. One major benefit is a decrease in U-Factor of approximately 0.04, improving the energy efficiency so that many of our doors and windows meet new energy codes and ENERGY STAR<sup>®</sup> zone requirements. The neutral color with low haze and ultra-smooth surface of our Interior Surface Low-E provides a clearer view of the outdoors and can be cleaned with common household glass cleaners. No special instructions. Our Interior Surface Low-E is durable and scratch-resistant.

Like our other Low-E glass, Ply Gem's *Passive Solar* glass provides superior U-value performance to reduce your electric bill all year round. Passive Solar glass has the added benefit of allowing the sun's energy to help heat your home in the coldest winter months. It is specifically tailored to meet the latest Energy Star qualifications for the Northern Zone.

## NATURAL LIGHT WITHOUT THE GLARE.

Ply Gem's Low-E glass has many advantages such as minimal visible darkening. Our glass minimizes interior glare, reducing eyestrain and making it easier to watch television or look at a computer screen when bright sunlight fills a room.



# EXPLANATION OF GLASS PACKAGES



## LOW-E GLASS PACKAGES

Our Low-E glass packages combine Low-E and Warm Edge spacer options, providing insulating glass options to meet your specific needs. Our Low-E glass packages provide better performance in regions with hot summers and cold winters. Our Low-E<sup>SC</sup> (solar cooling) glass packages are optimized for regions with significant indoor cooling and glare reduction requirements. Our Low-E glass packages can be combined with capillary tubes to address performance needs in high elevation applications.

**Low-E** — One lite of Low-E

**Low-E<sup>SC</sup>** — One lite of solar cooling Low-E

**Low-E2<sup>+</sup>** — One lite of Low-E and one lite of Interior Surface Low-E

**Low-E2<sup>SC+</sup>** — One lite of solar cooling Low-E and one lite of Interior Surface Low-E

**Low-E<sup>PS</sup>** — One lite of passive solar Low-E glass (surface 3)

**Low-E2<sup>PS</sup>** — One lite of passive solar Low-E and one lite of Interior Surface Low-E

‡ *These glass packages can be combined with capillary tubes to address performance needs in high elevation applications.*



## HIGH PERFORMANCE GLASS PACKAGES

Our HP glass packages combine Low-E with argon gas fill and Warm Edge spacer options, providing high-performance insulating glass options to meet your specific needs. Argon is a safe, odorless, colorless gas, which is heavier or denser than air. When used in conjunction with Low-E glass, argon provides better insulation. That's because heat and cold do not pass through argon gas as easily as through air. Argon is nontoxic and presents no human health or environmental concerns. HP glass packages are also available in solar cooling (<sup>SC</sup>) glass packages for regions with significant indoor cooling and glare reduction requirements.

**HP** — One lite of Low-E and argon gas fill

**HP<sup>SC</sup>** — One lite of solar cooling optimized Low-E and argon gas fill

**HP2<sup>+</sup>** — One lite of Low-E and one lite of Interior Surface Low-E with argon gas fill

**HP2<sup>SC</sup>** — One lite of Low-E and one lite of Interior Surface Low-E with argon gas fill

**HP<sup>PS</sup>** — One lite of passive solar Low-E glass (surface 3) with argon gas fill

**HP2<sup>PS</sup>** — One lite of passive solar Low-E and one lite of Interior Surface Low-E with argon gas fill

## GLASS OPTIONS

### Tinted Glass

Bronze, Grey or  
Black Spandrel

### Patterned Glass

Obscure

### Tempered

(Standard on  
doors, option  
for windows)

# THERMAL PERFORMANCE DATA

## CASEMENT THERMAL PERFORMANCE

For comparison, these are a few select configurations using 3mm glass within a 3/4" IGU and no grilles	R Value	NFRC CERTIFIED		
		U Factor	SHGC	VT
<b>WARM EDGE SPACER</b>				
LE	3.13	0.32	0.25	0.46
LE <sup>SC</sup>	3.33	0.30	0.19	0.36
LE2+	3.57	0.28	0.24	0.45
LE2+ <sup>SC</sup>	3.57	0.28	0.19	0.35
HP	3.45	0.29	0.25	0.46
HP <sup>SC</sup>	3.57	0.28	0.19	0.36
HP2+	3.85	0.26	0.24	0.45
HP2+ <sup>SC</sup>	4.00	0.25	0.18	0.35
<b>WARM EDGE PLUS SPACER (METAL)</b>				
HP	3.57	0.28	0.25	0.46
HP <sup>SC</sup>	3.70	0.27	0.19	0.36
HP2+	4.00	0.25	0.24	0.45
HP2+ <sup>SC</sup>	4.00	0.25	0.18	0.35

## SLIDING PATIO DOOR THERMAL PERFORMANCE

For comparison, these are a few select configurations using 3mm glass within a 3/4" IGU and no grilles	R Value	NFRC CERTIFIED		
		U Factor	SHGC	VT
<b>WARM EDGE SPACER</b>				
LE	3.03	0.33	0.29	0.55
LE <sup>SC</sup>	3.03	0.33	0.23	0.43
HP	3.33	0.30	0.29	0.55
HP <sup>SC</sup>	3.45	0.29	0.22	0.43
LE2+	3.57	0.28	0.28	0.53
LE2+ <sup>SC</sup>	3.57	0.28	0.22	0.42
HP2+	3.85	0.26	0.28	0.53
HP2+ <sup>SC</sup>	4.00	0.25	0.21	0.42
<b>WARM EDGE PLUS SPACER (METAL)</b>				
HP	3.45	0.29	0.29	0.55
HP <sup>SC</sup>	3.57	0.28	0.22	0.43
HP2+	4.00	0.25	0.28	0.53
HP2+ <sup>SC</sup>	4.00	0.25	0.21	0.42

R VALUE: Restrictive ambient air flow;  
U FACTOR: Rate of heat loss;

SHGC: Solar Heat Gain Coefficient;  
VT: Visible Transmittance

## DOUBLE HUNG THERMAL PERFORMANCE

For comparison, these are a few select configurations using 3mm glass within a 3/4" IGU and no grilles	R Value	NFRC CERTIFIED		
		U Factor	SHGC	VT
<b>WITH WARM EDGE</b>				
LE (Low-E, Air IGU)	2.94	0.34	0.28	0.52
LE <sup>SC</sup> (Solar Cooling Low-E, Air IGU)	2.94	0.34	0.22	0.41
HP (Low-E, Argon IGU)	3.23	0.31	0.28	0.52
HP <sup>PS</sup> (Passive Solar Low-E, Argon IGU)	3.23	0.31	0.44	0.54
HP <sup>SC</sup> (Solar Cooling Low-E, Argon IGU)	3.33	0.30	0.21	0.41
LE2+ (Low-E, Air IGU)	3.45	0.29	0.27	0.51
LE <sup>SC</sup> 2+ (Low-E, Air IGU)	3.45	0.29	0.21	0.40
HP <sup>PS</sup> 2+ (Passive Solar Low-E, Argon IGU)	3.57	0.28	0.43	0.54
HP2+ (Two Lites Low-E, Argon IGU)	3.70	0.27	0.27	0.51
HP <sup>SC</sup> 2+ (Two Lites Low-E, Argon IGU)	3.70	0.27	0.21	0.40
<b>WITH WARM EDGE PLUS SPACER</b>				
HP (Low-E, Argon IGU)	3.33	0.30	0.28	0.52
HP <sup>PS</sup> (Passive Solar Low-E, Argon IGU)	3.33	0.30	0.44	0.54
HP <sup>SC</sup> (Solar Cooling Low-E, Argon IGU)	3.45	0.29	0.21	0.41
HP <sup>PS</sup> 2+ (Passive Solar Low-E, Argon IGU)	3.70	0.27	0.43	0.54
HP2+ (Two Lites Low-E, Argon IGU)	3.85	0.26	0.27	0.51
HP <sup>SC</sup> 2+ (Two Lites Low-E, Argon IGU)	3.85	0.26	0.21	0.40

## AWNING THERMAL PERFORMANCE

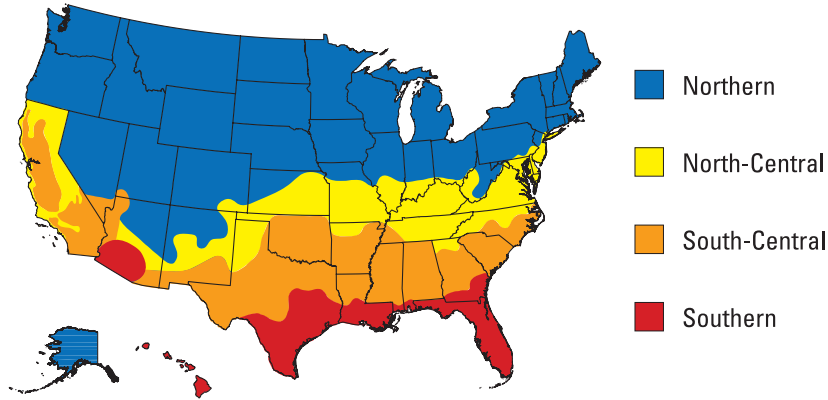
For comparison, these are a few select configurations using 3mm glass within a 3/4" IGU and no grilles	R Value	NFRC CERTIFIED		
		U Factor	SHGC	VT
<b>WITH WARM EDGE</b>				
LE (Low-E, Air IGU)	3.13	0.32	0.25	0.46
LE <sup>SC</sup> (Solar Cooling Low-E, Air IGU)	3.33	0.30	0.19	0.36
LE2+ (Low-E, Air IGU)	3.45	0.29	0.24	0.45
LE2+ <sup>SC</sup> (Low-E, Air IGU)	3.45	0.29	0.19	0.35
HP (Low-E, Argon IGU)	3.45	0.29	0.25	0.46
HP <sup>SC</sup> (Solar Cooling Low-E, Argon IGU)	3.45	0.29	0.19	0.36
HP2+ (Two Lites Low-E, Argon IGU)	3.85	0.26	0.24	0.45
HP2+ <sup>SC</sup> (Two Lites Low-E, Argon IGU)	3.85	0.26	0.18	0.35
<b>WARM EDGE PLUS SPACER (METAL)</b>				
HP (Low-E, Argon IGU)	3.57	0.28	0.25	0.46
HP <sup>SC</sup> (Solar Cooling Low-E, Argon IGU)	3.57	0.28	0.19	0.36
HP2+ (Two Lites Low-E, Argon IGU)	3.85	0.26	0.24	0.45
HP2+ <sup>SC</sup> (Two Lites Low-E, Argon IGU)	4.00	0.25	0.18	0.35

### NOTE:

All units are NAMI certified and rated in accordance with NFRC 100/200 standards by an AAMA accredited lab. Performance values reflect the performance of units tested with the following configuration: 3/4" IGU, 3mm glass and no grilles.



## ENERGY STAR® for Windows, Doors, and Skylights CLIMATE ZONE MAP



Ply Gem Pro Classic Series windows and patio doors can be configured to meet a specific ENERGY STAR zone in all states. Your investment in ENERGY STAR products will pay for itself over time in reduced energy bills, not to mention increase the comfort level inside your home.



**Home Innovation**  
NGBS GREEN CERTIFIED™

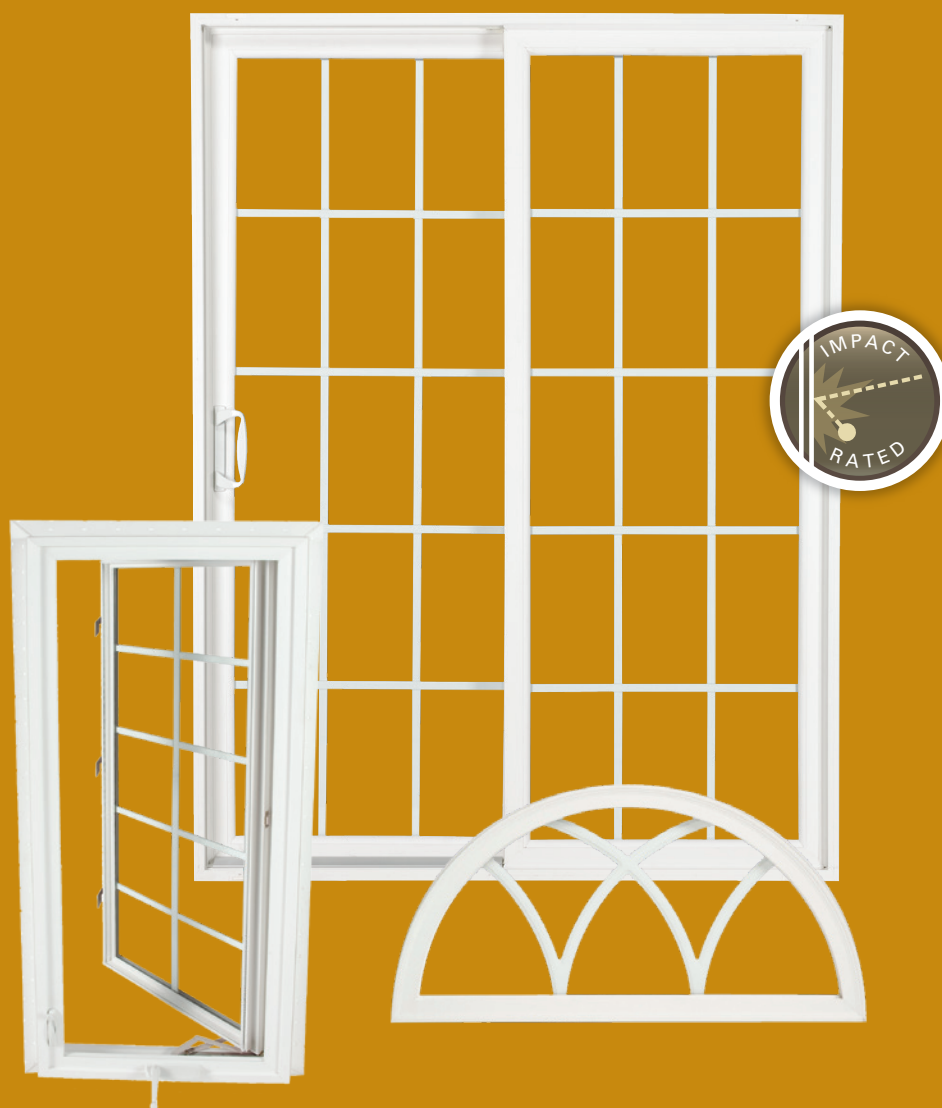
**PLY GEM PRO CLASSIC SERIES WINDOWS HAVE BEEN GREEN APPROVED BY THE HOME INNOVATIONS RESEARCH LAB.**

This means you can be assured that Ply Gem Pro Classic Series windows comply with specific green practice criteria in the National Green Building Standard. Visit [www.homeinnovation.com/greenproducts](http://www.homeinnovation.com/greenproducts) for more details.



## CLASSIC VINYL IMPACT WINDOWS & DOORS

- **Casement windows** feature corrosion-resistant coastal hardware and are constructed to meet C-LC50 performance.
- **Sliding patio doors** feature corrosion-resistant coastal hardware and are constructed to meet SGD-LC50 performance.
- **Architectural shape windows** are constructed to meet FW-R60 performance.
- Rated in accordance with the International Residential Codes and meet impact requirements in U.S. Zone 2 (110-120 mph) and Zone 3 (120-140 mph).
- Passes ASTM E1886/1996 Large Missile Impact and Cycling Tests.
- Meets AAMA/WDMA/CSA 101/I.S.2/A440 standard.
- Florida Building Commission Approved - FL 15297.
- Meets wind-borne debris specifications for large missile D (8' missile for Impact Zone 3 at 50 ft/sec).



# COLOR OPTIONS



WHITE



BEIGE



CLAY

Colors shown may not be accurate representations. For color matching, please request color swatches from your Ply Gem sales representative.

# HARDWARE OPTIONS

## PATIO DOOR HANDLES

WHITE



CLASSIC PATIO DOOR HANDLE (Exterior with optional lock)

BEIGE



CLASSIC PATIO DOOR HANDLE (Exterior)

CLAY



CLASSIC PATIO DOOR HANDLE (Exterior)

BRASS



CLASSIC PATIO DOOR HANDLE (Exterior with optional lock)

## HUNG WINDOW SASH LOCKS



CLASSIC SERIES

## CASEMENT & AWNING HANDLES & LOCKS



CLASSIC SERIES

## HARDWARE COLOR OPTIONS



WHITE



BEIGE



CLAY

# GRILLE STYLES



5/8" Sculptured GBG



1" Contoured GBG



5/8" Flat GBG



7/8" Flat GBG



7/8" SDL

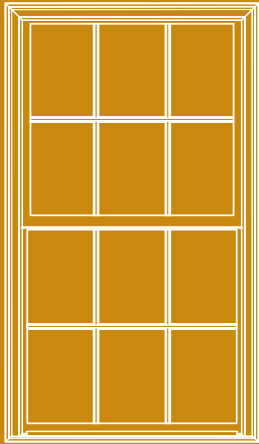


1 1/4" SDL

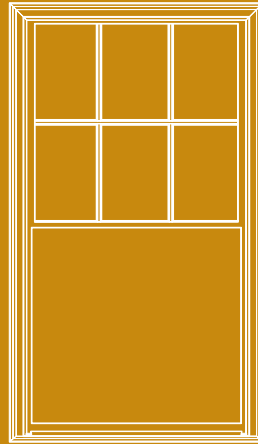
GBG = Grilles-Between-the-Glass

SDL = Simulated Divided Lites

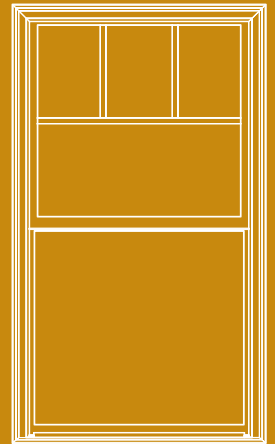
# STANDARD GRILLE PATTERNS



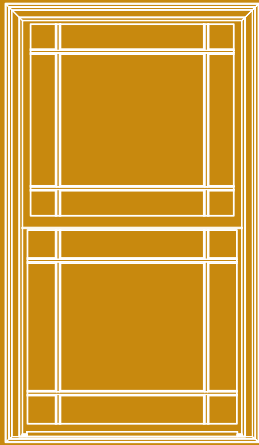
Colonial



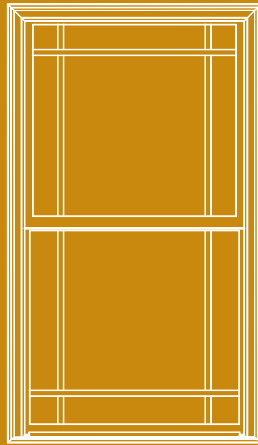
Half Colonial  
(shown on casement)



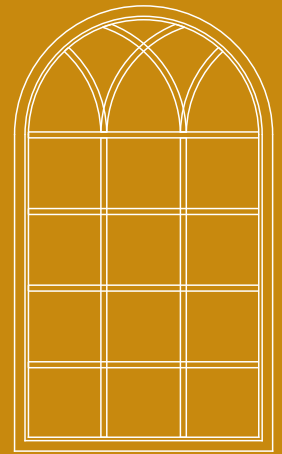
Plaza



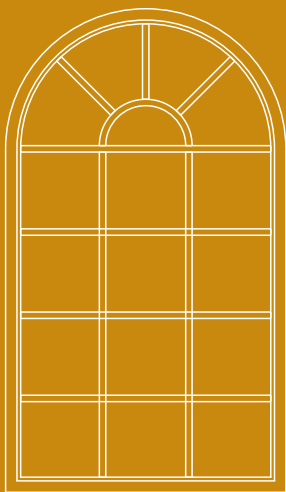
Prairie



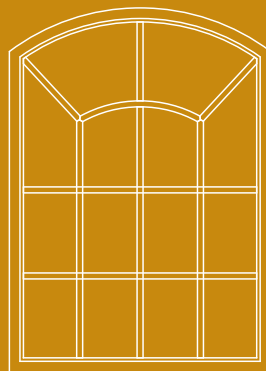
Marginal Prairie



Gothic



Hub and Spoke



Renaissance

**CALL CUSTOMER  
SERVICE FOR  
OPTIONAL  
GRILLE PATTERNS  
1.800.999.8400**



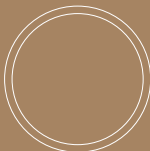
## ARCHITECTURAL SHAPES



Isosceles Triangle



Pentagon



Full Round



Full Oval



Octagon



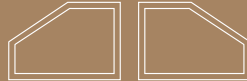
Right Angle Triangle



Transom



Eye brow



Clipped Right Angle Triangle



Quarter Round



Half Round



Extended Eyebrow Transom



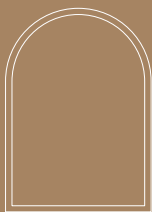
Extended Eyebrow Transom



Trapezoid Transom



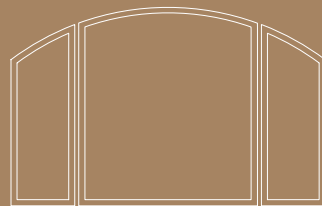
Extended Quarter Round



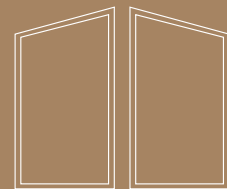
Extended Half Round



Extended Eyebrow



Segmented Extended Eyebrow



Trapezoid



## FRAME/CASING OPTIONS

## EXTENSION JAMBS



**BRICKMOULD**



**3 1/2" FLAT\***



**3/4" RECEIVER**  
(For simpler  
drywall or trim  
applications)

Brickmould and 3 1/2" flat frame available on double hung windows. Brickmould and 3 1/2" flat\* snap-on casings available for casement and awning windows and sliding patio doors.

### PRO SERIES CLASSIC

Available in natural "clear" wood, primed or cellular PVC in 4 9/16" and 6 9/16" widths; custom widths up to 9 1/8" on windows and doors

## SCREENS

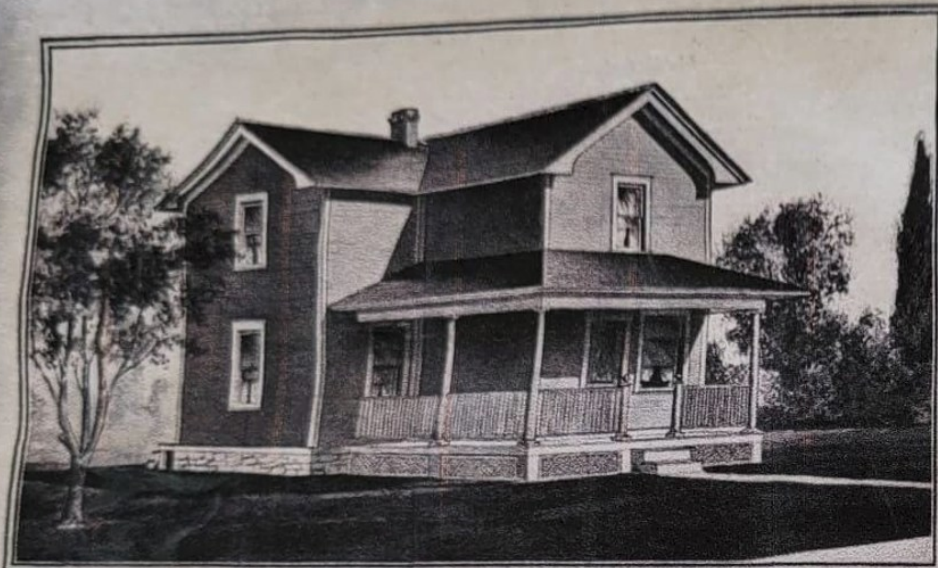
Pro Classic Series screens feature aluminum frames with fiberglass mesh. Screens for double hung, casement and awning windows are full length. Sliding patio door screens are full-length and feature steel rollers for ease of operation.

\*Currently not available on radius or bay units.

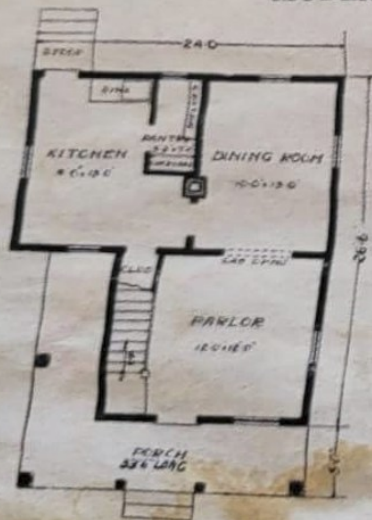


Ply Gem, the Ply Gem logo, the "Building Products. Building Success." slogan, Ply Gem Windows and the Ply Gem Windows & Doors logo are trademarks of Ply Gem Industries, Inc. ENERGY STAR® is a registered trademark of the U.S. Environmental Protection Agency. ©2018 Ply Gem Industries, Inc. 3706115251103/RevG/MS/CG/0319

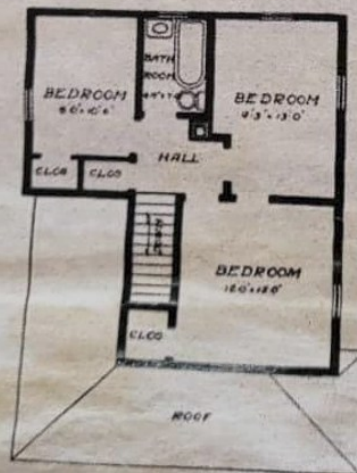
For more information, call 888-9PLYGEM.



MODERN HOME No. 159



FIRST FLOOR PLAN



SECOND FLOOR PLAN

**\$652<sup>00</sup>**

For \$652.00 we will furnish all the material to build this Six-Room Two-Story House, consisting of Lumber, Lath, Shingles, Mill Work, Ceiling, Siding, Flooring, Finishing Lumber, Building Paper, Pipe, Gutter, Sash Weights and Painting Material. NO EXTRAS, as we guarantee enough material to build this house according to our plans.

By allowing a fair price for labor, cement, brick and plaster, which we do not furnish, this house can be built for about \$1,171.00, including all material and labor.

For Our Offer of Free Plans See Page 3.

**T**HIS house is well arranged, having no waste space. Has six good size rooms, well lighted and ventilated with large windows. Is suitable for suburban or country home and has been frequently built in large numbers, proving to be a very good investment. It rents well, as it is practically two full stories high and of good appearance. It has a large front porch, 32 feet 6 inches long, with Colonial columns.

**F**irst Floor—Parlor with staircase leading to second floor. Cased openings from parlor to dining room. Has a large front window facing the street. Dining room and kitchen are of good size.

**S**econd Floor—Has three good size bedrooms, three closets and bathroom.

At the above price we furnish a massive front door, 3x7 feet, 1 1/2 inches thick, glazed with bevel plate glass. Interior doors are five-cross panel with Nona pine stiles and rails and yellow pine panels. Clear yellow pine interior trim, such as baseboard, casing, molding and clear yellow pine staircase. Clear yellow pine flooring throughout house and porches.

This house is built on a concrete foundation, frame construction, sided with narrow bevel clear cypress siding and has cedar shingle roof.

Painted two coats outside; your choice of color. Varnish and wood filler for two coats of interior finish.

The rooms on the first floor are 9 feet from floor to ceiling; rooms on second floor, 8 feet from floor to ceiling.

**This house can be built on a lot 27 feet wide.**

Complete Warm Air Heating Plant, for soft coal, extra.....	\$ 70.98
Complete Warm Air Heating Plant, for hard coal, extra.....	73.95
Complete Steam Heating Plant, extra.....	126.55
Complete Hot Water Heating Plant, extra.....	161.49
Complete Plumbing Outfit, extra.....	102.78

SEARS, ROEBUCK  
AND CO.



CHICAGO,  
ILLINOIS