

**LEGEND**

— LANDSCAPE AND LIGHTING DISTRICT BOUNDARY

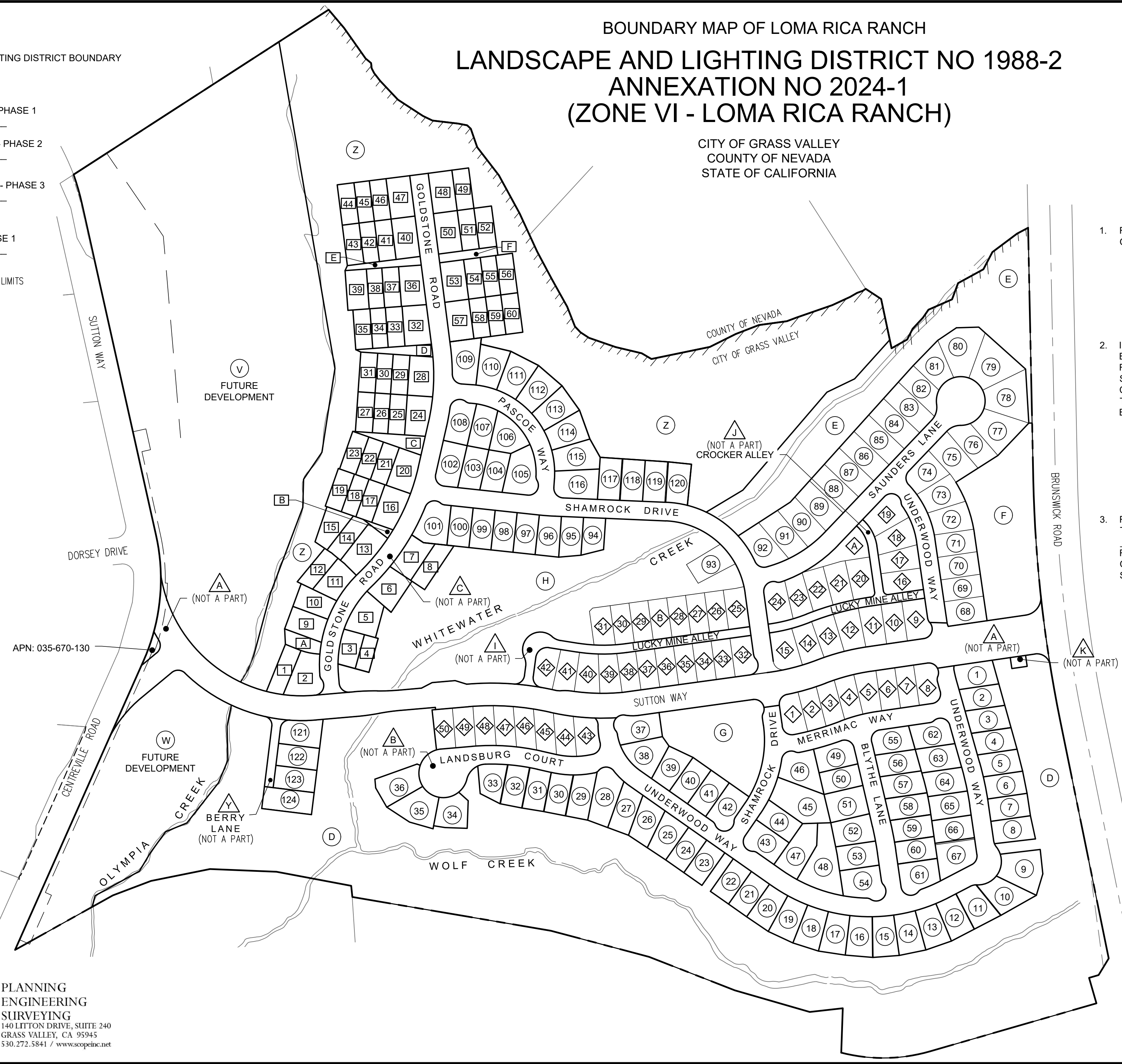
SUBDIVISION LOT NUMBER

- ① LOT - LOMA RICA RANCH PHASE 1  
PER BK. \_\_\_ SUBD. PG. \_\_\_
- ① LOT - LOMA RICA RANCH - PHASE 2  
PER BK. \_\_\_ SUBD. PG. \_\_\_
- ① LOT - LOMA RICA RANCH - PHASE 3  
PER BK. \_\_\_ SUBD. PG. \_\_\_
- △ LOT - NOT A PART -  
LOMA RICA RANCH - PHASE 1  
PER BK. \_\_\_ SUBD. PG. \_\_\_

////// EXISTING CITY LIMITS

**BOUNDARY MAP OF LOMA RICA RANCH  
LANDSCAPE AND LIGHTING DISTRICT NO 1988-2  
ANNEXATION NO 2024-1  
(ZONE VI - LOMA RICA RANCH)**

CITY OF GRASS VALLEY  
COUNTY OF NEVADA  
STATE OF CALIFORNIA



APN: 035-670-130

1. FILED IN THE OFFICE OF THE CITY CLERK THIS \_\_\_\_ DAY OF \_\_\_\_ 2024.

TAYLOR DAY  
CITY CLERK  
CITY OF GRASS VALLEY  
STATE OF CALIFORNIA

2. I HEREBY CERTIFY THAT THE WITHIN MAP SHOWING BOUNDARIES OF CITY OF GRASS VALLEY COMMUNITY FACILITIES DISTRICT NO. 2024 - \_\_\_, COUNTY OF NEVADA, STATE OF CALIFORNIA, WAS APPROVED BY THE CITY COUNCIL, OF THE CITY OF GRASS VALLEY AT A MEETING THEREOF, HELD ON THE \_\_\_\_ DAY OF \_\_\_\_ 2024, BY ITS RESOLUTION NO. 2024-\_\_\_\_\_.

TAYLOR DAY  
CITY CLERK  
CITY OF GRASS VALLEY  
STATE OF CALIFORNIA

3. FILED THIS \_\_\_\_ DAY OF \_\_\_\_, 2024, AT THE HOUR OF \_\_\_\_ O'CLOCK, \_\_\_\_ M. IN BOOK \_\_\_\_ OF MAPS OF ASSESSMENT AND COMMUNITY FACILITIES DISTRICTS AT PAGE \_\_\_\_ IN THE OFFICE OF THE COUNTY RECORDER, IN THE COUNTY OF NEVADA, STATE OF CALIFORNIA.

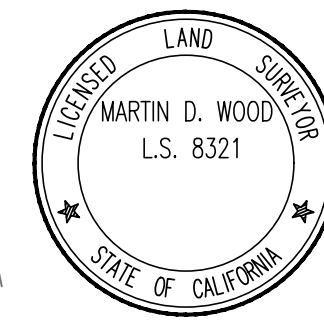
INSTRUMENT NUMBER:

GREGORY J. DIAZ, COUNTY RECORDER

DEPUTY, COUNTY OF NEVADA

PREPARED BY OR UNDER THE DIRECTION OF:

MARTIN D. WOOD P.L.S. 8321



**SCO** PLANNING ENGINEERING SURVEYING  
140 LITTON DRIVE, SUITE 240  
GRASS VALLEY, CA 95945  
530.272.5841 / www.scopeinc.net