

**GRAND RAPIDS
PUBLIC UTILITIES**

Service is Our Nature

500 SE Fourth Street • Grand Rapids, Minnesota 55744

ELECTRIC DEPARTMENT MONTHLY REPORT February 2024 Commission Meeting

Reliability Report Last Month

SAIDI:	0.01	Avg Minutes / Customers Served	CAIDI:	29.18	Avg Minutes / Customer Out	Total Customers Out:	2
SAIFI:	0.00	Cust Outages / Customers Served	CAIFI:	1.000	Avg Outages / Customer Out	Total Reported Hours:	1
Active:	7641	Active Electric Customers	Outages:	2	Total Number of Outages	Total Customer Hours Out:	1
ASAI:	100.0000 0	Average Percent System Available					

In January, the GRPU electrical system experienced two reliability outages. One outage was scheduled for a pole replacement, while the other occurred unexpectedly for reasons that remain unidentified.

Outage Time	Restored Time	Outage Type	Duration (Hours)	Customers Out	Customer Hours
1/15/2024 2:24:43 PM	1/15/2024 2:32:36 PM	Unknown -r-	0.13	1	0.13
1/25/2024 4:32:57 AM	1/25/2024 5:23:26 AM	Scheduled -r-	0.84	1	0.84

Figure 1: Outage Information by Type

Electric Load Graph Last Month

In January, the Monthly Peak of 27,408 kW occurred on the 15th. To mitigate peak demands, solar battery dispatching and load control measures were employed. Using load modeling, three potential peak periods were identified, with the evening emerging as the largest peak for NEMMPA.

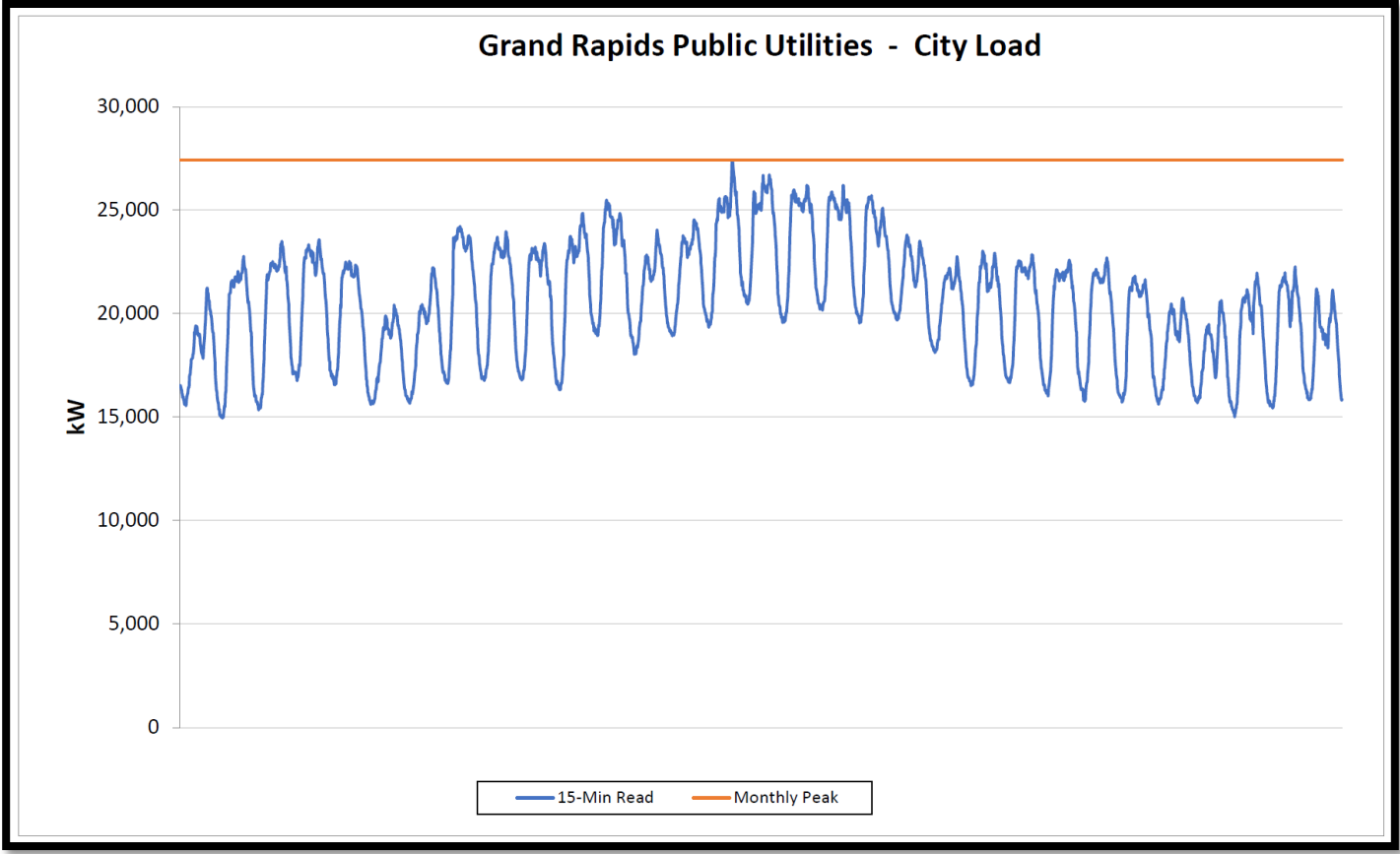


Figure 2: 27,429 kW GR Peak

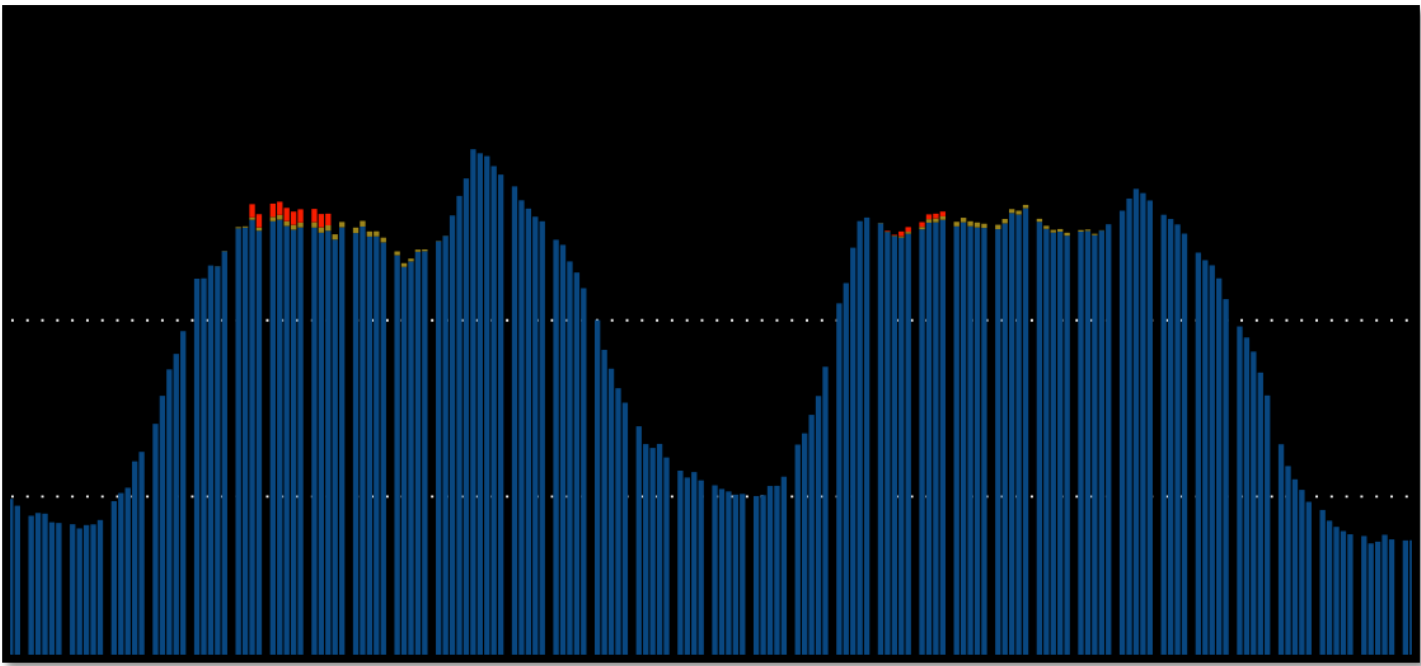


Figure 3: NEMMPA Load with Battery 1/15-1/16.

NEMMPA vs. non-NEMMPA Peak Last Month

The attached graph shows the aggregated NEMMPA peak versus non-NEMMPA peak.

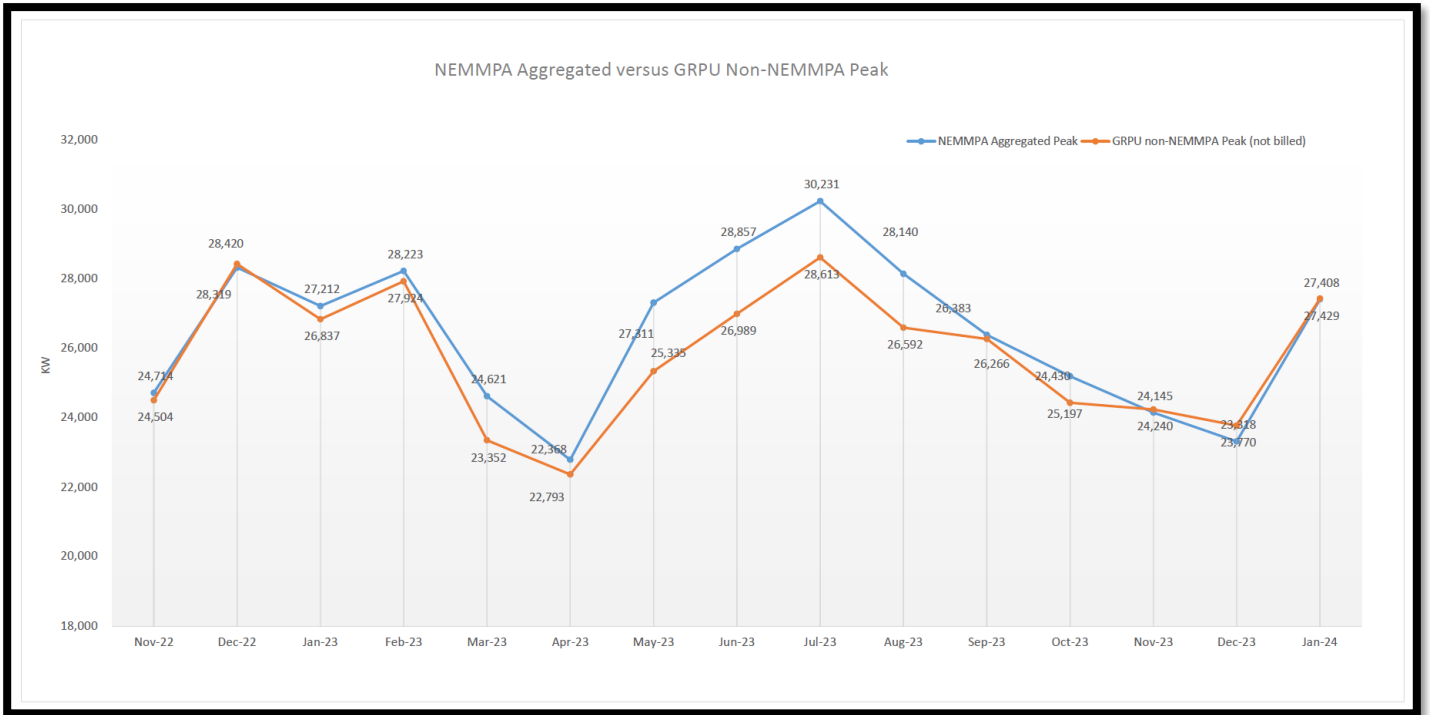


Figure 4: NEMMPA Peak -vs- non-NEMMPA

Effective Wholesale Electric Power Rate Last Month

The attached graph shows the effective wholesale electric rate.

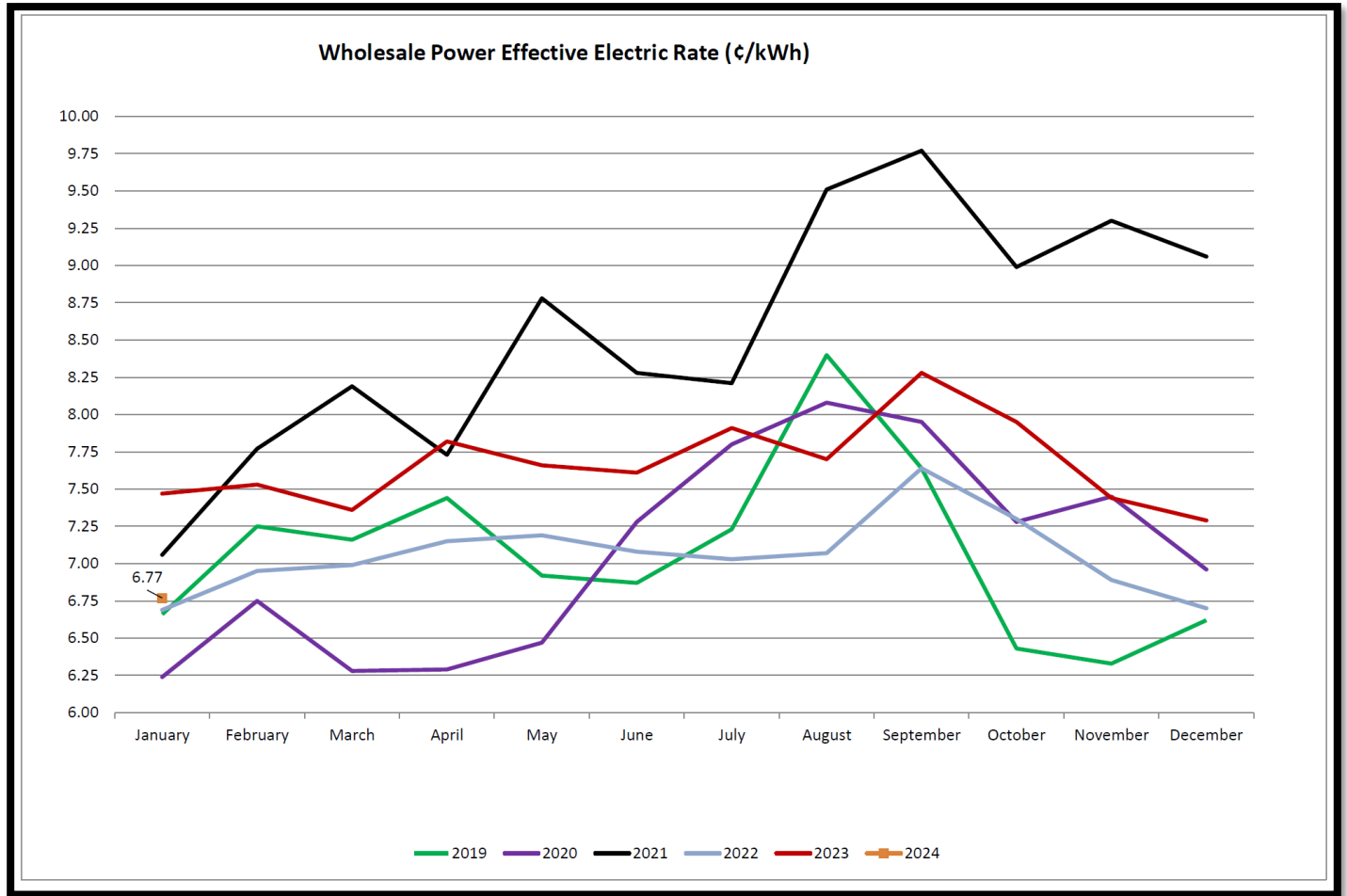


Figure 5: Wholesale Power Effective Elect Rate

Capital and Operations Project Summary

The procurement of materials for this year's projects is underway. Lead times remain a concern, and forecasts indicate an early onset of the construction season. All approved projects are currently proceeding as planned.