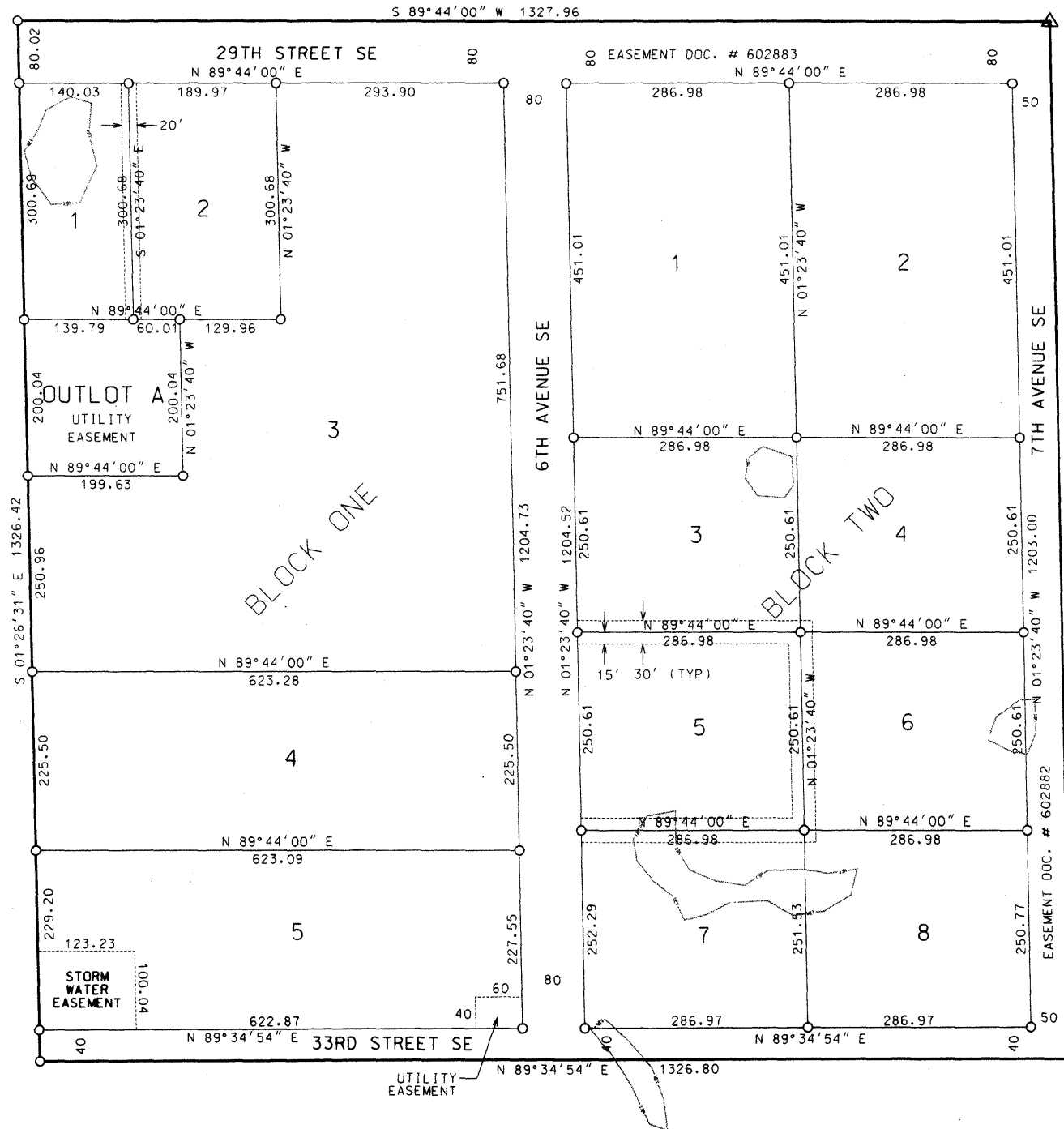
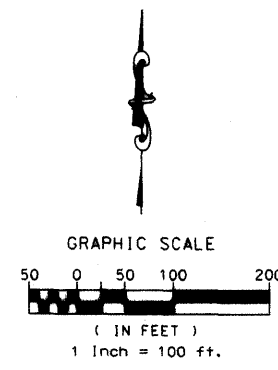


AIRPORT SOUTH INDUSTRIAL PARK - PHASE 1

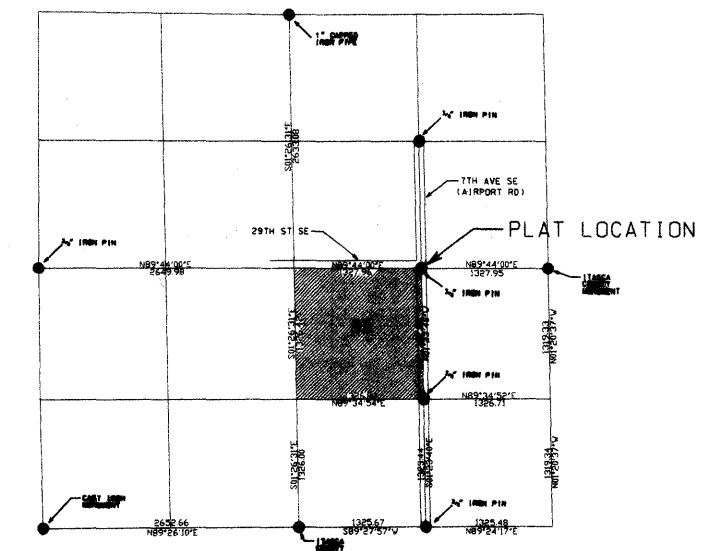


LEGEND

- PLAT BOUNDARY
- SURVEY MONUMENT FOUND
- 5/8" REBAR SET RLS #15294
- △ P-K NAIL
- LOT LINE
- BLOCK LINE
- UTILITY EASEMENT LINE
NOTE: A UTILITY EASEMENT ENCOMPASSES ALL OF OUTLOT A
- DELINIATED WETLAND BOUNDARY



GRAND RAPIDS
SEC 33 - T55N - R24W



* BASIS OF BEARINGS
ITASCA COUNTY SOUTH ZONE COORDINATES

PREPARED BY: **SEH**
21 NE 5TH STREET
SUITE 200
GRAND RAPIDS, MN
55744
SEH # AGRANR0610.00

A000611174

OFFICE OF THE COUNTY RECORDER
ITASCA COUNTY, MINNESOTA

CERTIFIED, FILED, AND
RECORDED ON
05/30/2007 04:30:00PM
FILE #

PAGES 2
REC FEES \$56.00

JEAN BENGSTON WINTER
ITASCA COUNTY RECORDER

BY SWR Dep

IC zoning

AR