



 GRAND
RAPIDS
AREALIBRARY

CITY GOVERNMENT
ACADEMY



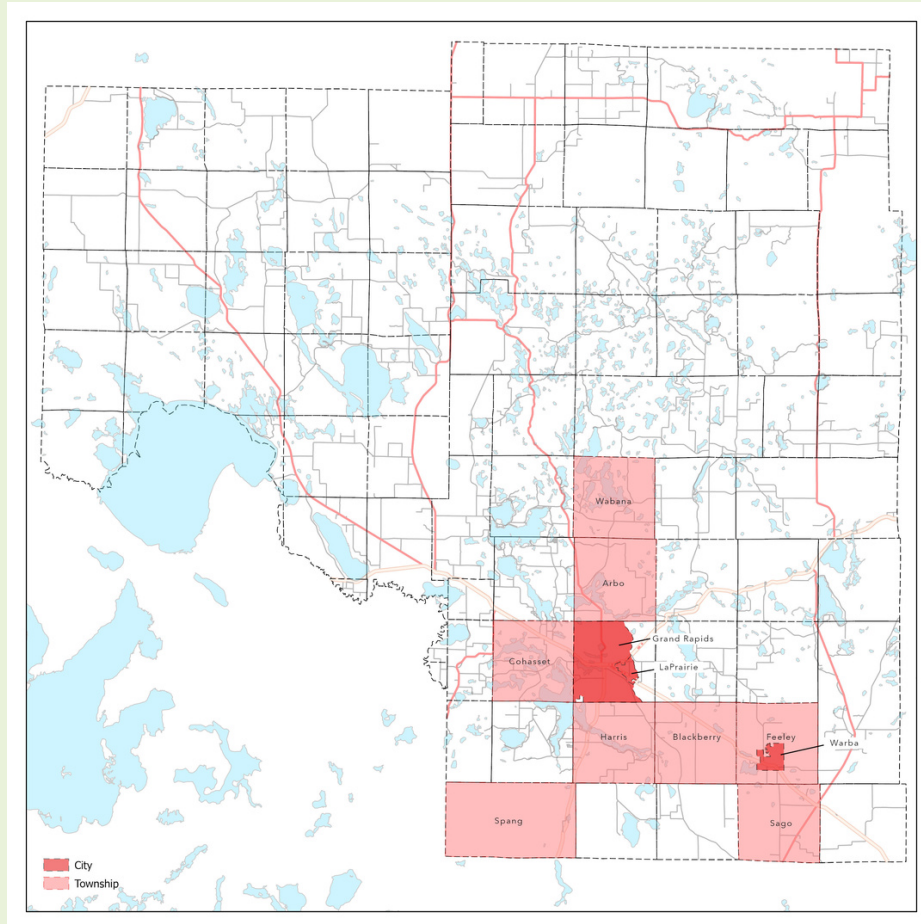
GRAL AT A GLANCE

- Grand Rapids Area Library (GRAL) is a free community resource supported by property taxes since 1895.
- GRAL is the busiest library in NE Minnesota outside of Duluth.
- There are six libraries in Itasca County, but 75% of library transactions in Itasca County occur at GRAL.
- GRAL is used by all of Itasca County. More than 50% of checkouts are from cardholders who live outside the City of Grand Rapids. This is a long-term pattern going back decades.
- Thank you, Grand Rapids City Council, for funding 85% of GRAL's annual operations.

SERVICE AREA

The Library serves the following cities and townships:

- Arbo
- Blackberry
- Cohasset
- Feeley
- Grand Rapids
- Harris
- LaPrairie
- Sago
- Spang
- Wabana
- Warba



SERVICE AREA
POPULATION:
21,168

LIBRARY
CARDHOLDERS:
9,426

CIRCULATION:
165,796 items*
[*20% downloadable]



GOVERNANCE: DEFINITION OF PUBLIC LIBRARY SERVICE

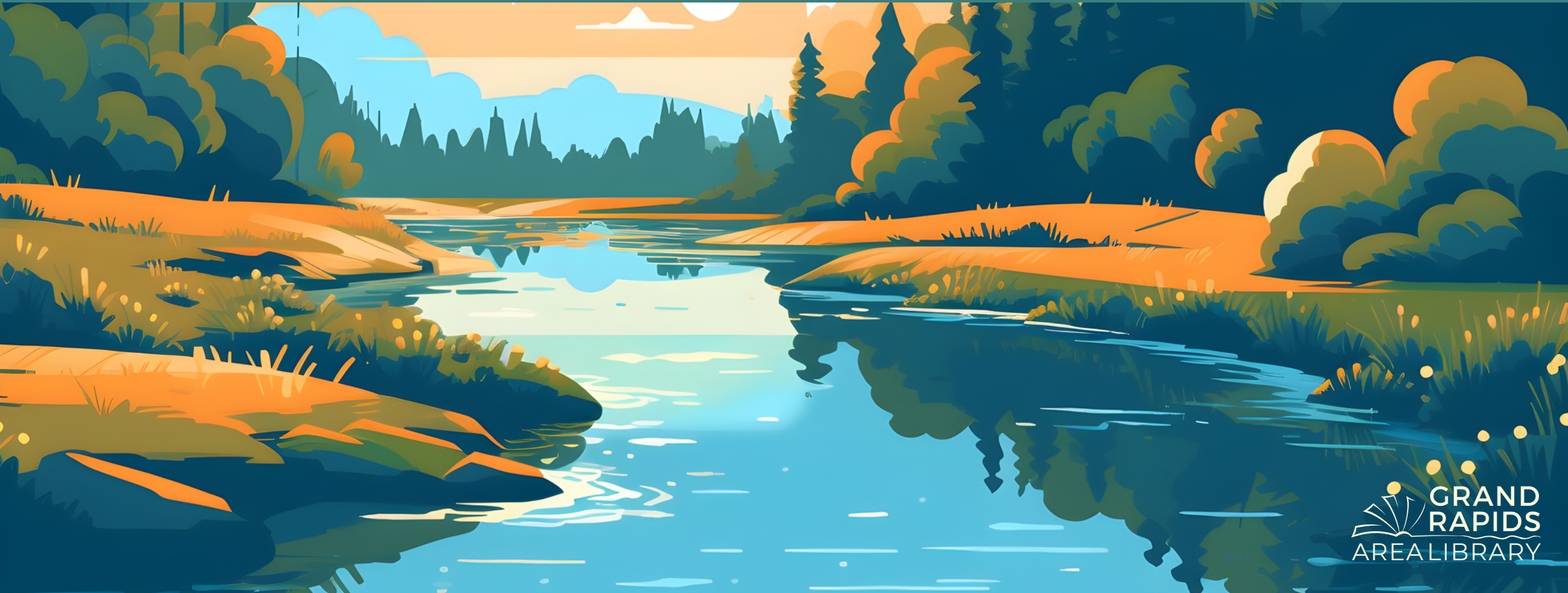
MS 134.001 SUBDIVISION 2. PUBLIC LIBRARY.

"Public library" means any library that provides free access to all residents of a city or county without discrimination.

GOVERNANCE: HOW IS A LIBRARY FUNDED?

134.07 PUBLIC LIBRARY SERVICE.

The governing body of any city or county may establish and maintain [through collection of tax dollars] public library service for the use of its inhabitants.



GOVERNANCE: HOW DO LOCAL GOVERNMENTS OPERATE A LIBRARY?

134.09 LIBRARY BOARDS.

SUBDIVISION 1. APPOINTMENT.

The mayor of the city with the approval of the council for a city library or the board of commissioners for a county library, shall appoint a board of five, seven, or nine members from among the residents of the city or county.

SUBDIVISION 2. TERM OF OFFICE.

If nine board members are appointed, three shall hold office for one year, three for two years and three for three years.





GOVERNANCE: WHAT ARE THE DUTIES OF A LIBRARY BOARD?

134.11 ORGANIZATION OF BOARD; DUTIES.

SUBDIVISION 1. ORGANIZATION.

Immediately after appointment, the library board shall organize by electing one of its number as president and one as secretary, and from time to time it may appoint such other officers as it deems necessary.

SUBDIVISION 2. DUTIES.

It shall have exclusive control of the expenditure of all money collected for or placed to the credit of the library fund, of interest earned on all money collected for or placed to the credit of the library fund, of the construction of library buildings, and of the grounds, rooms, and buildings provided for library purposes. All money received for the library shall be paid into the city or county treasury, credited to the library fund, kept separate from other money of the city or county, and paid out only upon approval by the board.



GOVERNANCE: WHAT ARE THE STATE REPORTING REQUIREMENTS FOR LIBRARIES?

134.13 ANNUAL REPORT.

As soon as practicable following the end of the fiscal year the library board shall report to the governing body of the city or county all amounts received during the preceding year and the sources thereof, the amounts expended and for what purposes, the number of library materials on hand, the number purchased and loaned, and such other information as it deems advisable. No later than April 1 of each year the library board shall file this information with the Department of Education on forms supplied by the department.

GOVERNANCE: SPECIAL CONSIDERATIONS

13.40 LIBRARY AND HISTORICAL DATA.

SUBDIVISION 2. PRIVATE DATA; LIBRARY BORROWERS.

(a) Except as provided in paragraph (b), the following data maintained by a library are private data on individuals and may not be disclosed for other than library purposes except pursuant to a court order:

- (1) data that link a library patron's name with materials requested or borrowed by the patron or that link a patron's name with a specific subject about which the patron has requested information or materials; or*
- (2) data in applications for borrower cards, other than the name of the borrower.*

(b) A library may release reserved materials to a family member or other person who resides with a library patron and who is picking up the material on behalf of the patron. A patron may request that reserved materials be released only to the patron.





OPERATIONS

275.761 MAINTENANCE OF EFFORT REQUIREMENTS REDUCED.

(a) Notwithstanding any law to the contrary and except as provided in paragraphs (b) and (c), the amounts required to be expended under the maintenance of effort requirements for counties under sections 134.34, 245.4835, 256F.10, and 256F.13, are reduced to 90 percent of the amounts required for 2011.

(b) This section does not permit a county to reduce compliance with maintenance of effort requirements to the extent that the reduction would:

- (1) require the state to expend additional money or incur additional costs; or
- (2) cause a reduction in the receipt by the state or the county of federal funds.

(c) The commissioner of management and budget may determine the maintenance of effort requirements that are not permitted, in whole or in part, to be reduced under paragraph (b). The commissioner shall publish these determinations on the department's website and no county may reduce compliance with a maintenance of effort requirement that the commissioner determines is not subject to reduction.

(d) Notwithstanding any law to the contrary, the amounts required to be expended under the maintenance of effort requirements for all statutory and home rule charter cities under section 134.34 are reduced to 90 percent of the amounts required for 2011.

OPERATIONS

OPEN HOURS PER WEEK IN 2000: **58**
 EMPLOYEES IN 2012: **12**

OPEN HOURS PER WEEK IN 2024: **36**
 EMPLOYEES IN 2024: **8**

- FULL-TIME: **5**
- PART-TIME: **3**

**WHY ARE WE OPEN
 MON-THURS 10AM-6PM
 & FRI 10AM-2PM?**

Monthly Activity Report - By Day-of-week for Jun 2019

Locations on this report: Grand Rapids Area Library

Checkout

	SUN	MON	TUE	WED	THR	FRI	SAT	TOTAL
12:00AM	0	0	0	0	0	29	6	35
01:00AM	0	6	1	0	1	0	0	8
02:00AM	0	0	0	0	24	1	0	25
03:00AM	0	0	0	0	0	0	0	0
04:00AM	0	0	0	0	0	0	2	2
05:00AM	2	2	0	0	0	0	1	5
06:00AM	0	2	4	0	0	5	8	19
07:00AM	0	11	10	7	2	1	0	31
08:00AM	0	23	16	4	3	3	17	66
09:00AM	8	155	175	136	160	130	23	787
10:00AM	2	344	358	347	347	260	294	1952
11:00AM	2	532	489	271	341	318	372	2325
12:00PM	5	323	382	262	179	252	418	1821
01:00PM	8	376	229	220	183	218	249	1483
02:00PM	6	330	280	193	252	218	9	1288
03:00PM	3	341	127	186	206	182	3	1048
04:00PM	3	315	281	257	156	223	1	1236
05:00PM	1	129	205	184	204	3	11	737
06:00PM	4	151	109	220	117	2	1	604
07:00PM	9	4	11	3	0	10	1	38
08:00PM	10	2	4	3	1	1	1	22
09:00PM	3	4	7	5	11	3	6	39
10:00PM	9	8	1	2	1	2	2	25
11:00PM	2	7	0	0	3	6	0	18
TOTAL	77	3065	2689	2300	2191	1867	1425	13614

OPERATIONS



EQUITABLE CITY/COUNTY FUNDING NEEDED FOR GRAND RAPIDS AREA LIBRARY

THE SITUATION

The Library is a valued community resource, providing free services to people throughout Itasca County. The Library is funded by local City of Grand Rapids and Itasca County tax dollars.

	CITY OF GRAND RAPIDS	ITASCA COUNTY
LIBRARY USE (CHECK-OUTS)	< 50 %	> 50 %
LIBRARY SUPPORT (IN TAX DOLLARS)	84 %	16 %
PER CAPITA SUPPORT (IN TAX DOLLARS)	\$66.67	\$13.50

The City has continued to increase their share up to \$350,000 above the minimum required level, as calculated by the State of MN (Dept. of Education), and faces challenges to sustain this level.

Itasca County is supporting the Library near the level it did in 2012.

In recent years, the Library has undergone service cuts (both in open hours and staffing), due to inadequate funding from Itasca County. The City needs cooperation from the County to sustain Library services with an equitable funding model, based on actual use.

THE SOLUTION

A Joint Powers Agreement between the City of Grand Rapids and Itasca County to ensure equitable funding is the only way to maintain this community resource and prevent further service cuts. The City of Grand Marais and Cook County have had a successful agreement since 1992, illustrating that this type of partnership is sustainable.





SERVICES: COLLECTIONS & COMMUNITY SPACES



OUTDOORS:
MCCARTY
MUSIC PARK

OUTDOORS:
LIBRARY
LAWN



FINDING YOUR
WAY AROUND

GRAND RAPIDS
AREA LIBRARY





SERVICES: ONLINE TOOLS

AVAILABLE 24/7/365 WITH A LIBRARY CARD:

- *Online Catalog at alslib.info*
- *Libby electronic books, audiobooks, and magazines (20% of checkouts are electronic materials)*
- *Electronic databases*



SERVICES: GRAL BEYOND BOOKS

Unique in-person and online programming, to meet community needs



LEGO CLUB

ARTASTIC AT HOME!
WITH GRANDMA NANCY

GRAND RAPIDS AREALIBRARY & Mealy PRESENT
BookTime

GRAND RAPIDS AREALIBRARY
YA NEED TO READ THESE

Mid-day Movies

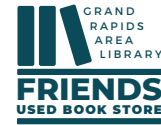
TEEN TUESDAY

GRAND RAPIDS AREALIBRARY
ANNUAL PUZZLE PALOOZA



SUMMER READING Scavenger Hunts!

2023 SUMMER READING
SUMMER CELEBRATION!



bell museum
After School STEAM

GRAND RAPIDS AREALIBRARY
Page Turners
A BOOK CLUB FOR CHAPTER-BOOK-READING KIDS

Teen Book Club

MYSTERY MONDAY POP-UP BOOK SALE

ACTIVE SOCIAL MEDIA

#gralbeyondbooks



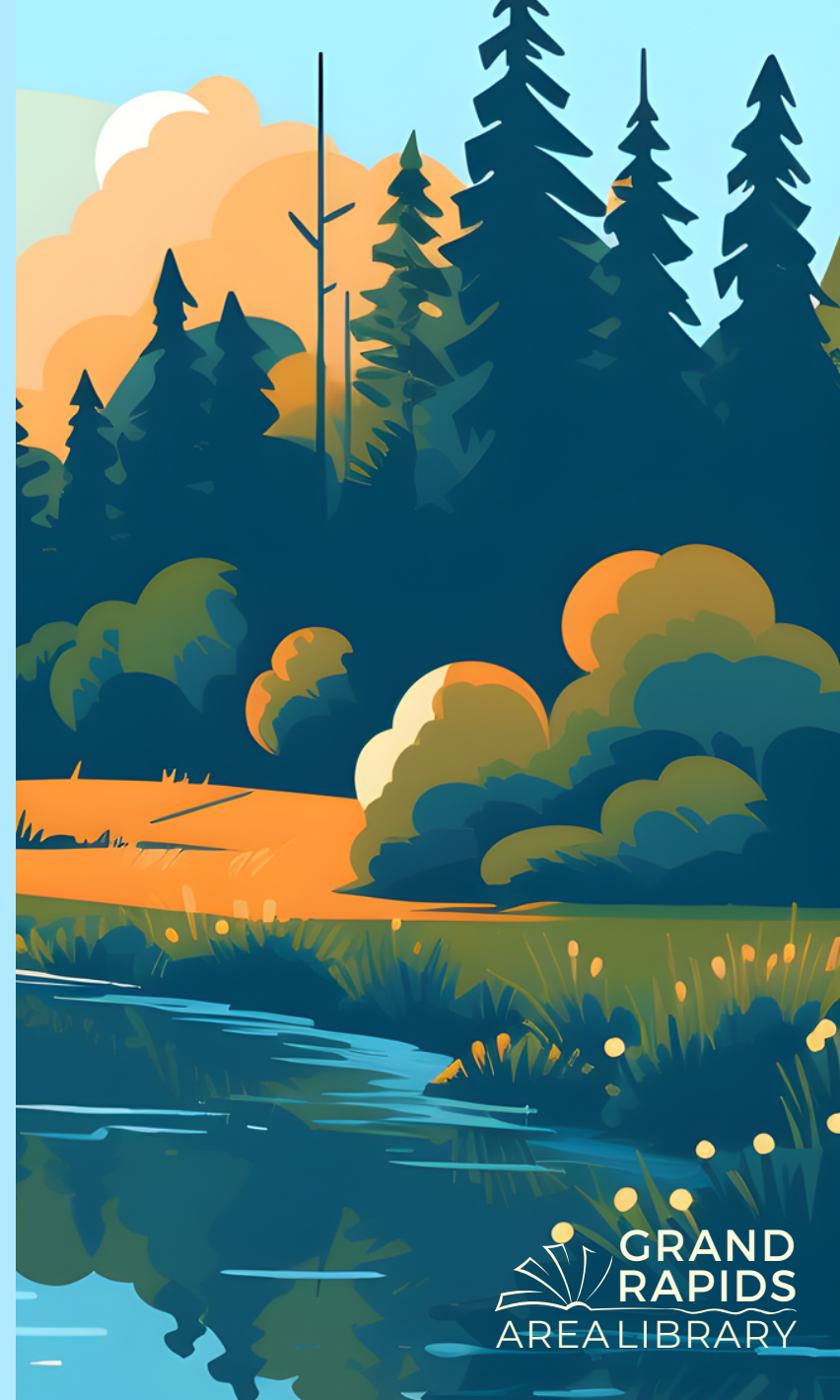
GRAND RAPIDS
AREALIBRARY

COMMUNITY PARTNERSHIPS



Arrowhead Library System

- *As an ALS member library, GRAL patrons have access to:*
 - *Inter-library loan*
 - *Mail-a-Book*
 - *Bookmobile*
- *\$50,000 in-kind IT support*
 - *Online catalog*
 - *Research databases*
 - *Libby collection*
- *Monthly take-and-create programming*
- *Quality in-person programming and promotions, funded in part or in whole with money from Minnesota's Arts and Cultural Heritage Fund (ACFH).*




COMMUNITY PARTNERSHIPS: VOLUNTEERS

GRAND RAPIDS AREA LIBRARY 2023 VOLUNTEER REPORT

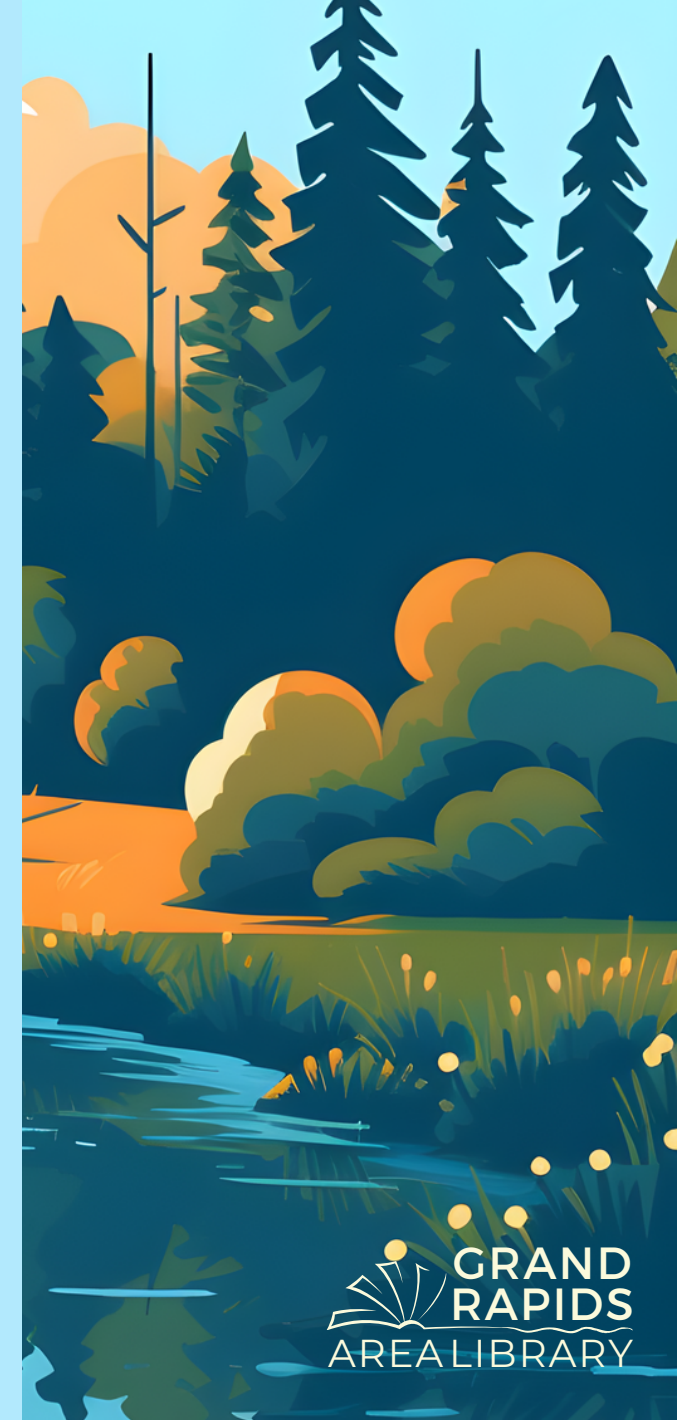
Month	Regular Volunteers		RSVP Volunteers		Library Board		Library Friends		Library Foundation		Total	Total
	# Vol	Hours	# Vol	Hours	# Vol	Hours	# Vol	Hours	# Vol	Hours	# Vol	Hours
January	30	147.50	6	93.50	9	9.00	11	49.50	2	5.50	36	241.00
February	29	115.25	7	80.75	7	7.00	8	39.00	6	14.00	36	196.00
March	28	147.00	7	116.00	9	9.00	11	59.00	1	5.00	35	263.00
April	29	130.00	6	100.00	5	5.00	10	57.25	5	13.00	35	230.00
May	25	123.25	7	123.25	8	8.00	11	71.00	1	5.00	32	246.50
June	25	148.50	9	128.00	6	6.00	12	95.00	1	4.50	34	276.50
July	32	171.00	8	99.00	8	8.00	16	110.50	1	3.50	40	270.00
August	39	258.00	8	132.50	8	29.00	10	110.00	1	2.00	47	390.50
September	32	142.50	8	95.25	8	13.00	10	50.00	8	21.00	40	237.75
October	23	125.50	7	106.50	8	8.00	6	46.25	1	4.00	30	232.00
November	31	144.00	7	134.00	9	9.00	10	95.25	5	11.00	38	278.00
December	24	117.50	8	82.00	8	8.00	7	43.75	1	8.00	32	199.50
Total		1,770.00		1,290.75		119.00		826.50		96.50	78*	3,060.75

COMMUNITY PARTNERSHIPS: GRAND RAPIDS AREA LIBRARY FOUNDATION

GRAND RAPIDS AREA

LIBRARY 
FOUNDATION

glibraryfoundation.org



 **GRAND
RAPIDS**
AREALIBRARY

COMMUNITY PARTNERSHIPS: GRAND RAPIDS AREA LIBRARY FRIENDS

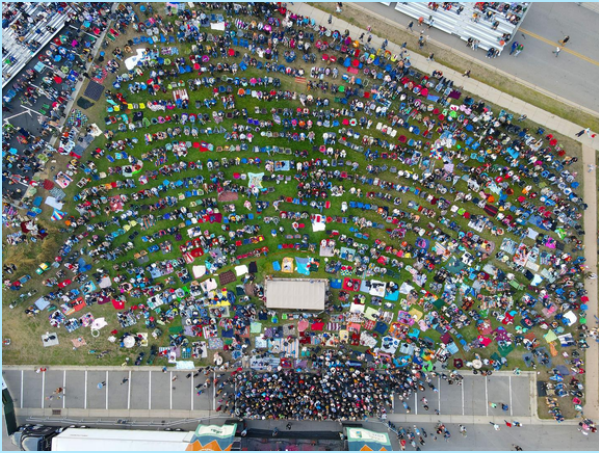


facebook.com/gralfriends



GRAND
RAPIDS
AREA LIBRARY

COMMUNITY PARTNERSHIPS: RIVERFEST



CHALLENGES

1 MAINTAINING SERVICE LEVELS

The balance between public expectations of open hours and services, against available funding.

2 BUILDING MAINTENANCE

- Phase I of the Façade Maintenance & Repair plan was completed in late fall 2023.*
- Phase II includes necessary roof replacement.*

3 EQUITABLE FUNDING

- Despite accounting for more than 50% of use, the County pays less than 15% of our budget.*
- We need to work together to change this structure.*



 GRAND
RAPIDS
AREALIBRARY

QUESTIONS?