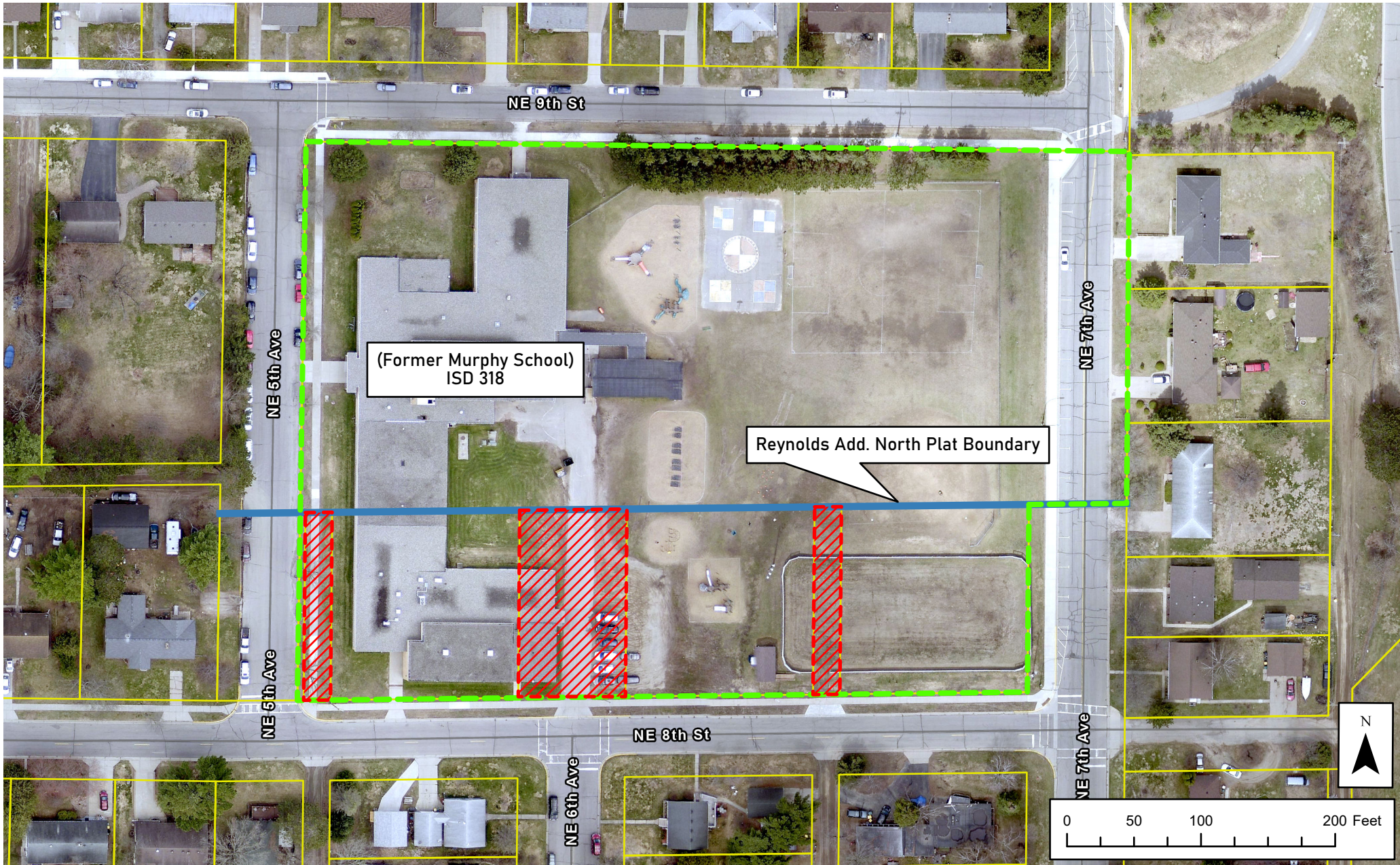



# ISD #318 Vacation Request

(6th Ave. E and the N/S Alleys within Blocks 1 and 2, Reynolds' Addition)



 Area of Interest

 Grand Rapids Parcels

 Area of Requested Vacation

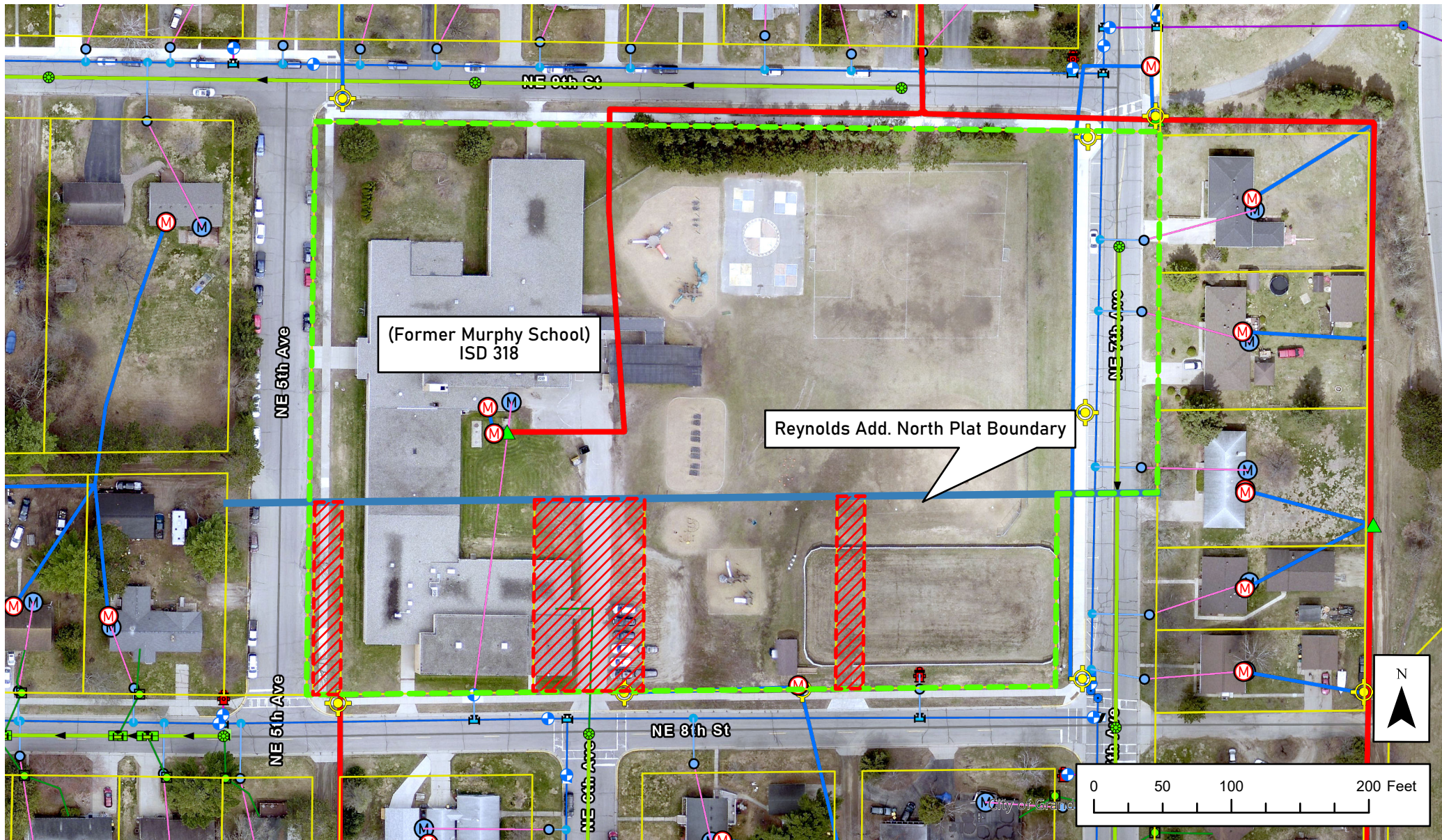
 Plat Boundary Line





# ISD #318 Vacation Request

(6th Ave. E and the N/S Alleys within Blocks 1 and 2, Reynolds' Addition)



<ul style="list-style-type: none"> <li><span style="color: green;">■</span> Area of Interest</li> <li><span style="color: red;">■</span> Area of Requested Vacation</li> <li>Grand Rapids Parcels</li> <li><span style="border: 1px solid yellow; display: inline-block; width: 10px; height: 10px;"></span> Grand Rapids Parcels</li> <li>Service Meters</li> <li><span style="border: 1px solid red; border-radius: 50%; padding: 2px;">M</span> Low Voltage Service</li> </ul>	<ul style="list-style-type: none"> <li>Streetlights</li> <li><span style="color: yellow;">⊙</span> Low Voltage Lighting</li> <li>Transformers</li> <li><span style="color: green;">▲</span> Medium Voltage Transformer</li> <li>Electric Line</li> <li><span style="color: blue;">—</span> Secondary Line</li> </ul>	<ul style="list-style-type: none"> <li><span style="color: red;">—</span> Primary Line</li> <li>Sanitary Manholes</li> <li><span style="color: green;">●</span> Manhole</li> <li>Sanitary Fittings</li> <li><span style="color: green;">—</span> End Cap</li> <li><span style="color: green;">■</span> Joint</li> <li><span style="color: green;">■</span> ROW</li> </ul>	<ul style="list-style-type: none"> <li><span style="color: blue;">⊕</span> Wye</li> <li>Sanitary Services</li> <li><span style="color: green;">—</span> Sanitary Services</li> <li>Sanitary Mains</li> <li><span style="color: green;">—</span> Lateral</li> <li>Water Valves</li> <li><span style="color: blue;">⊕</span> Gate</li> </ul>	<ul style="list-style-type: none"> <li><span style="color: blue;">●</span> Service</li> <li>Water Service Lines</li> <li><span style="color: blue;">—</span> Domestic</li> <li><span style="color: pink;">—</span> Customer</li> <li>Fire Hydrants</li> <li><span style="color: red;">■</span> Fire Hydrants</li> </ul>	<ul style="list-style-type: none"> <li>Water Fittings</li> <li><span style="color: blue;">●</span> Bend</li> <li><span style="color: blue;">⊕</span> Cross</li> <li><span style="color: blue;">⊕</span> Plug</li> <li><span style="color: blue;">⊕</span> Reducer</li> <li><span style="color: blue;">⊕</span> Tee</li> <li><span style="color: blue;">●</span> Corporation</li> </ul>	<ul style="list-style-type: none"> <li>Water Customer Meter</li> <li><span style="border: 1px solid blue; border-radius: 50%; padding: 2px;">M</span> Water Customer Meter</li> <li>Water Mains</li> <li><span style="color: blue;">—</span> Distribution</li> <li><span style="color: purple;">—</span> Transmission</li> <li><span style="color: pink;">—</span> Lead</li> </ul>
---	--	---	--	---	--	--





# REYNOLDS' ADDITION TO GRAND RAPIDS

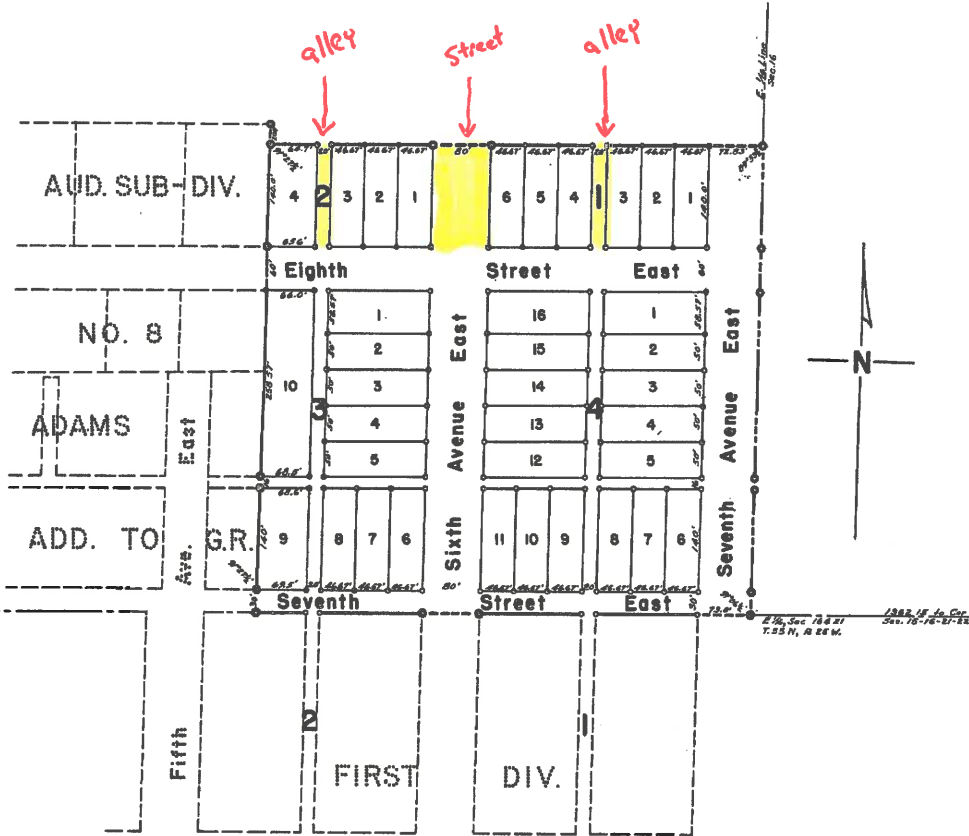
ITASCA COUNTY, MINNESOTA

TOWNSHIP 55 NORTH, RANGE 25 WEST, OF 4th P. M.

10 Acres in the SW 1/4, SE 1/4, of Section 16

Scale 1" = 100'

Sam Bensing, Jr., Surveyor



## Dedication

Know All Men by These Presents:

That Theodore T. Reynolds and Sodie A. Reynolds, his wife, are the sole owners of a tract of land in the Southwest Quarter of the Southeast Quarter (SW 1/4 of SE 1/4), of Section Sixteen (16), Township Fifty-five North (T. 55 N.), Range Twenty-five West (R. 25 W.) of the 4th Principal Meridian, more particularly described as follows, to-wit:

Beginning at the East 1/16 corner on the line common to Sections 16 and 21, Township 55 North, Range 25 West of the 4th P. M., Itasca County, Minnesota; Thence West along the Section line a distance of 882.06 feet; Thence North at an angle of 91° 27' 1/2" from West to North a distance of 644.57 feet; Thence East at an angle of 88° 32' 1/2" from North to East a distance of 877.60 feet, to the East 1/16 line of said Section 16; Thence South along the East 1/16 line of said Section 16, a distance of 644.57 feet, to the point of beginning.

And being desirous of platting the same into Lots, Blocks, Streets, Avenues and Alleys, have caused the same to be surveyed, and the annexed plat thereof to be made in accordance with the statutes of this State in such cases made and provided.

NOW, THEREFORE, We do hereby ratify and confirm said survey and plat thereof as "REYNOLDS' ADDITION TO GRAND RAPIDS", and sign, and execute said plat, and hereby dedicate to the public use forever, the Streets, Avenues, and Alleys therein delineated, expressly reserving and excepting therefrom, however, all iron ores, metals, minerals, fossils, mineral oils, and mineral paints, on within or under said land and each and every part thereof, together with the right, license and authority to enter upon said land to explore for, mine and remove the same.

IN WITNESS WHEREOF, we have hereunto set our hands and seals, this 18<sup>th</sup> day of Sept. A. D., 1948.

*Theodore T. Reynolds*  
*Sodie A. Reynolds*

IN THE PRESENCE OF:

*Sam Bensing, Jr.*  
*Ben Hammond*

STATE OF MINNESOTA  
County of Itasca

On this 18<sup>th</sup> day of Sept. A. D., 1948, personally appeared before me, Theodore T. Reynolds and Sodie A. Reynolds, his wife, to me well known to be the persons who executed the foregoing instrument and acknowledged that they executed the same as their free act and deed.

*Ben Hammond*

STATE OF MINNESOTA  
County of Itasca

BEN GRUSSENDORF, Notary Public, Itasca County, Minn.  
My Commission Expires July 4, 1951.

I, Sam Bensing, Jr., do hereby certify that I am a Registered Land Surveyor of Itasca County, Minnesota; that I have at the request of the proprietors thereof made a careful survey of the property described in the foregoing certificate of the proprietors and have platted the same into Lots, Blocks, Streets, Avenues, and Alleys; that the plat is a correct representation of the survey; that all distances are correctly shown; that monuments for the guidance of future surveys have been correctly placed in the ground as shown; that the outside boundary lines are correctly designated on the plat; that there are no wet or swampy lands except as designated; that no public highways or thoroughfares had been laid out, opened, traveled or existed before such platting was done except as are delineated upon said plat.

Subscribed and sworn to before me this 18<sup>th</sup> day of Sept. A. D., 1948

*Sam Bensing, Jr.*

*Ben Hammond*  
Notary Public, Itasca County, Minn.  
My Commission Expires July 4, 1951.

On this 14<sup>th</sup> day of October A. D., 1948, the annexed plat of "REYNOLDS' ADDITION TO GRAND RAPIDS" was approved by the Village Council of the Village of Grand Rapids, Itasca County, Minnesota at a regular meeting of said Council, held in the Village Hall, at Grand Rapids, Minnesota.

*Frank M. Voss*  
Village President  
*Samuel Johnson*  
Village Recorder

This is to certify that the taxes on the above described property for the year 1947 are paid this 20<sup>th</sup> day of September A. D., 1948.

*Samuel Johnson*  
Treasurer of Itasca County, Minnesota.

This is to certify that on this 20<sup>th</sup> day of September A. D., 1948, there are no unpaid back taxes on the above described property.

*William H. Lewis*  
Auditor, Itasca County, Minnesota.

170550

This is to certify that the annexed plat of "REYNOLDS' ADDITION TO GRAND RAPIDS" was filed for record in my office on this 26<sup>th</sup> day of October A. D., 1948.

*William H. Lewis*  
Register of Deeds, Itasca County, Minnesota.