

Grand Rapids Public Utilities

August 28, 2024, Commission Meeting

Department Head Presentation

Customer Solar Installations

Chad Troumbly – Electric Department Manager



**GRAND RAPIDS
PUBLIC UTILITIES**
Service is Our Nature

Items Covered– Specific to the Homeowner

- What is Solar Power?
- Solar as a back-up during a power outage?
- Customer Installs
- GRPU Website
- Metering
- Numbers



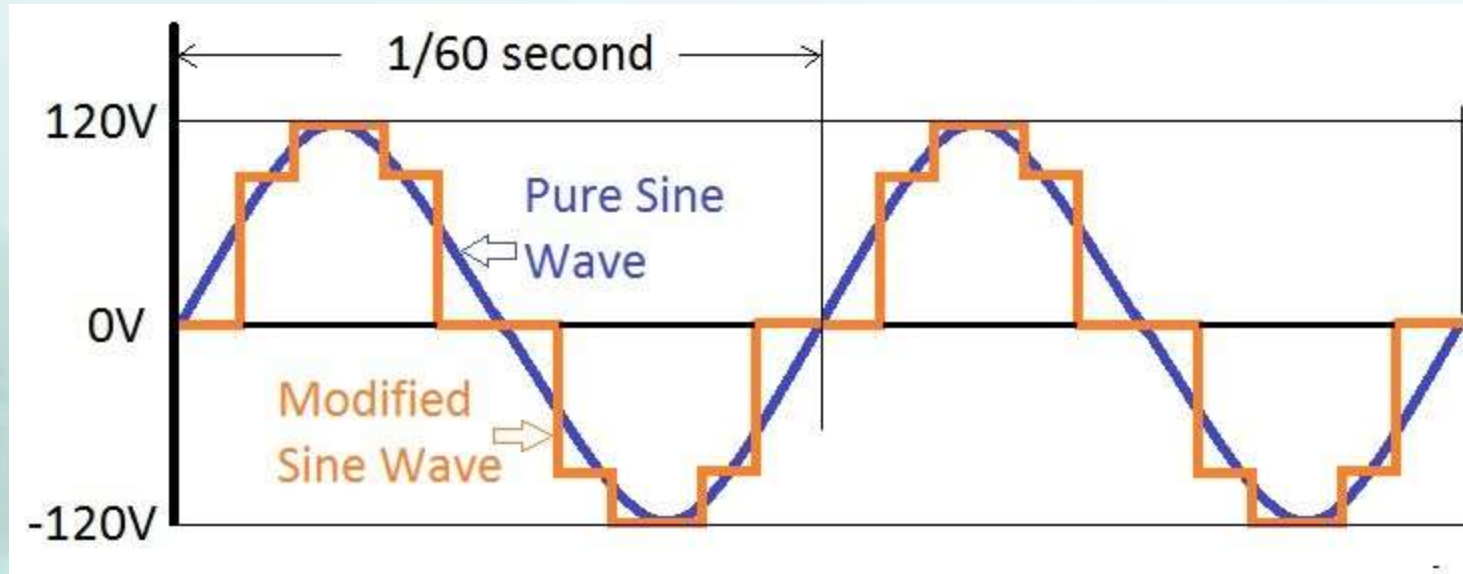
What is Solar Power?

- Solar power is energy from the sun that is converted into thermal or electrical energy. Solar energy is the cleanest and most abundant renewable energy source available, and the U.S. has some of the richest solar resources in the world. - <https://www.seia.org/>



Can a customer use solar as a back-up during a power outage?

- No and Yes



- AC/DC

Customer Installations of Solar and Solar with Battery



High Level Process of Installing Solar at a Customer's Location

- Design
- Calculate the Numbers
 - Personal Choice
 - Home Energy Audit?
- Fill Out Applications and Permits
- Get Approval
- Build It
- Pass Inspections
- Produce Power



Website

CITY OF GRAND RAPIDS
IT'S IN MINNESOTA'S NATURE

City Home Contact Us Search

Community Departments Resources Economic Development

Solar (Distributed Energy Resources)

Grand Rapids Public Utilities (GRPU) has adopted a process addressing the interconnection of distributed energy resources (DER) to the electric distribution grid. This process is required per Minnesota Statute §216B.3611 and shall be followed by GRPU customers who wish to continuously parallel solar, wind, or other types of generation with the electric grid.

Please click on the link below to download the file. This process is also available at Grand Rapids Public Utilities office.

Supporting Documents

- [Solar \(Distributed Energy Resources\) Interconnection Process \(1 MB\)](#)

Directions

Grand Rapids Public Utilities
500 SE 4th St
Grand Rapids, MN 55744
See map: [Google Maps](#)

Public Utilities

- + About GRPUC
- + Customer Service
- + Education & Environment
- + Rebates & Programs
- Utility Services
- + Electric Utility
- + Water Utility
- Wastewater Utility
- Useful Links

Contact information

Address
500 SE 4th Street
Grand Rapids, MN 55744

Office Hours
Monday-Friday: 8:30 AM - 4:30 PM

Office Numbers
Phone: 218-326-7024
Fax: 218-326-7499

[View Full Contact Details](#)

Simplified Interconnection Application

This document provides a simplified process for interconnecting distributed energy resources (DER) to the electric distribution grid. It is intended for use by customers who wish to parallel their DER with the electric grid. The process is required per Minnesota Statute §216B.3611 and shall be followed by GRPU customers who wish to continuously parallel solar, wind, or other types of generation with the electric grid.

Application Fee

Application Fee	Interconnect
\$100	10 min
\$200	15 min
\$300	20 min
\$400	25 min
\$500	30 min

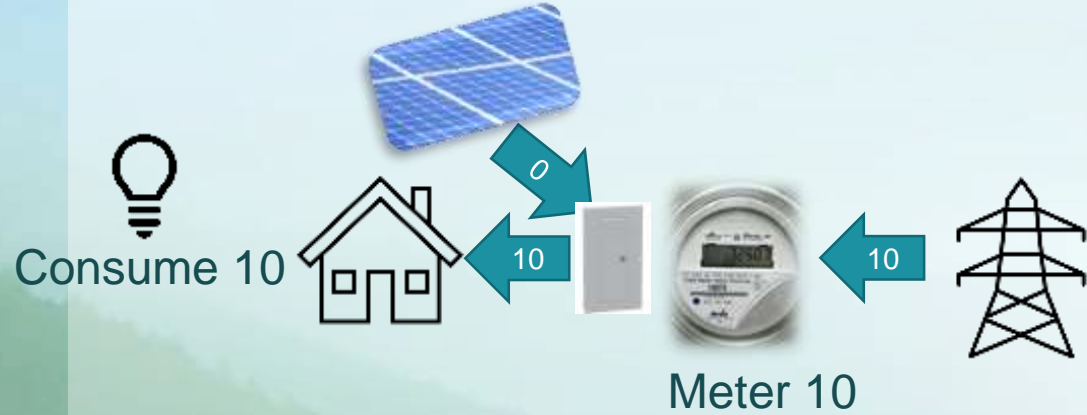
Metering

- Typical Home Meter Does Not See Everything
- What you Give or Take



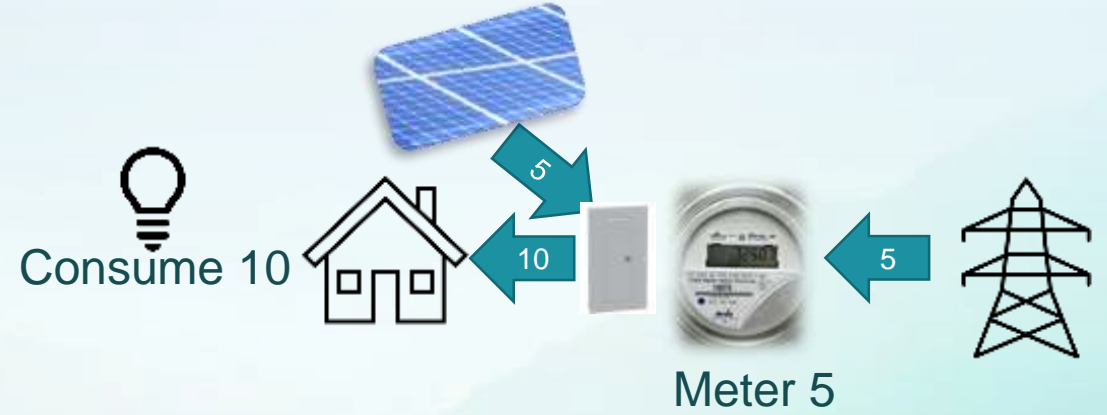
A (no solar)

Produce 0



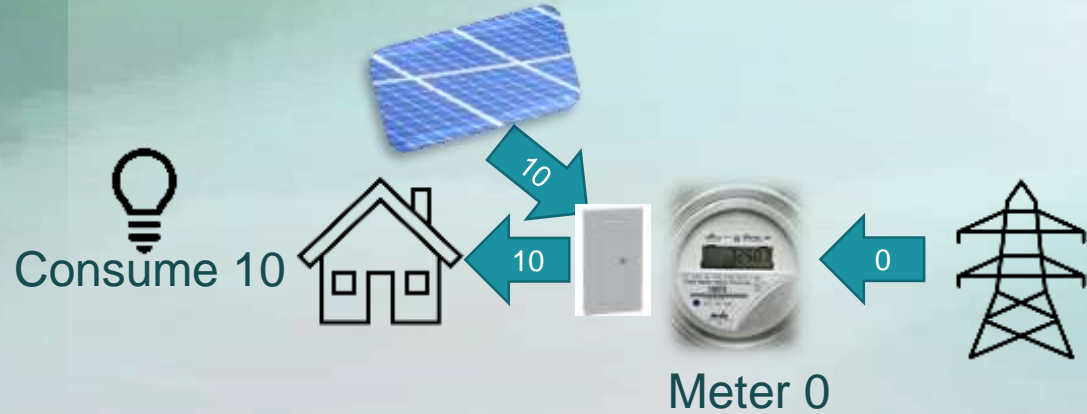
B (half of load solar)

Produce 5



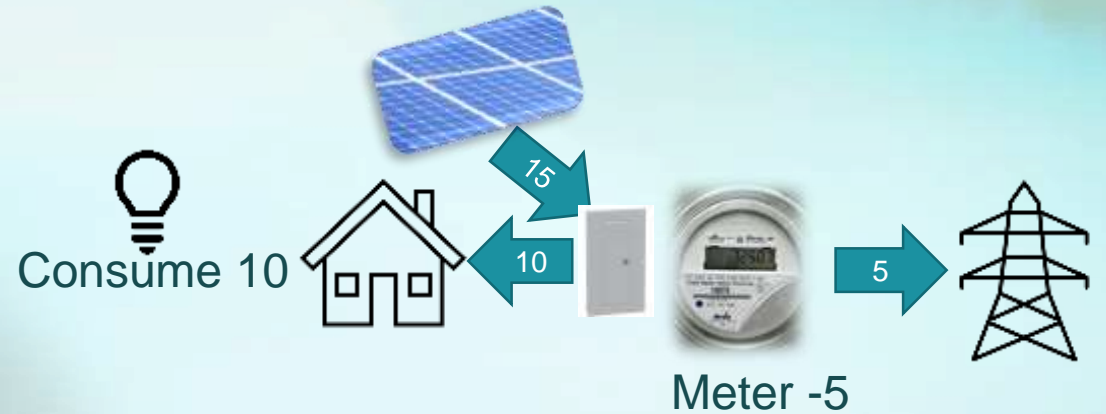
C (full load solar)

Produce 10



D (above load solar)

Produce 15



Numbers



Questions / Comments

August 28, 2024, Commission Meeting

Department Head Presentation

Chad Troumbly – Electric Department Manager



**GRAND RAPIDS
PUBLIC UTILITIES**

Service is Our Nature