



CITY OF  
**GRAND RAPIDS**  
ITS IN MINNESOTA'S NATURE

# **Consider Adoption of a Resolution: CUP Amendment Request Walmart**

**May 26, 2026**



CITY OF  
**GRAND RAPIDS**  
IT'S IN MINNESOTA'S NATURE

# CUP Amendment Request

- **Petitioner:** LK Architecture on behalf of Walmart
- **Filing Date:** April 6, 2026
- **Requested CUP Amendment:** would allow for the updating of the building's current exterior paint colors to the current Walmart brand standard of dark gray with blue accent and updating of building signage.
- **Subject Property:** Walmart store located at 100 SE 29<sup>th</sup> St, Grand Rapids, MN  
*Lot 1, Block 1, Walmart plat of Grand Rapids, Itasca County, Minnesota*
- **Present Use of Property:** 198,177 Sq. Ft. Walmart store.



CITY OF  
**GRAND RAPIDS**  
IT'S IN MINNESOTA'S NATURE

# CUP Amendment Request

**Subject Property:**

**100 SE 29<sup>th</sup> ST**





CITY OF  
**GRAND RAPIDS**  
IT'S IN MINNESOTA'S NATURE

# CUP Amendment Request

## **History of Division 14 - *Large Scale Commercial Development Standards:***

- **February 2004 - City adopts updated Comprehensive Plan, identifies the need to update Zoning Ordinance. As part of this process, the City Council had discussions specific to the impacts of large-scale commercial development in the City.**
- **In response, a Zoning Ordinance Revision Steering Committee developed standards for large scale retail general sales and service (buildings greater than 70,000 sq. ft.)**
- **The standards, which were later adopted as part of the Zoning Ordinance, established this category of use as a conditional use in GB/SGB zoning districts, with specific architectural and site design standards geared toward ensuring that large scale commercial development is compatible with the unique built and natural environment of Grand Rapids.**
- **The CUP Process allows for case specific public review/input into large scale retail projects.**



CITY OF  
**GRAND RAPIDS**  
IT'S IN MINNESOTA'S NATURE

# CUP Amendment Request

## **History of Division 14 - *Large Scale Commercial Development Standards (cont.):***

**Generally, the proposed Large Scale Commercial Development Standards includes the following elements geared towards the integration of these types of developments within the context of the community:**

- **Examination of the relationship of the proposed development with adjacent streets, businesses and neighborhoods and community features.**
- **Parking and vehicle and pedestrian circulation.**
- **Landscaping and Screening.**
- **Building Design Standards.** \*
- **Environmental review for buildings in excess of 125,000 sq.ft.**
  
- **May 18, 2005 - Ordinance adopted.**
  
- **CUP's To Date: Wal-Mart (new store + amendments), Target (enlargement of existing store), L & M (reuse of former Wal-Mart building + amendment).**



CITY OF  
**GRAND RAPIDS**  
IT'S IN MINNESOTA'S NATURE

# CUP Amendment Request

## Relevant Sections of Division 14:

### Section 30-903(1)b. Materials and colors

***Materials and colors. Buildings shall incorporate high quality materials that provide long term durability and design appeal. Concrete cinder block and metal siding are prohibited on building facades that face public streets. Facade colors shall be low reflectance and subtle. High intensity colors are prohibited but complementary colors that accent primary colors are acceptable.***



CITY OF  
**GRAND RAPIDS**  
IT'S IN MINNESOTA'S NATURE

# CUP Amendment Request

## Current Façade:





CITY OF  
**GRAND RAPIDS**  
IT'S IN MINNESOTA'S NATURE

# CUP Amendment Request

Orange >>> Dark Gray:



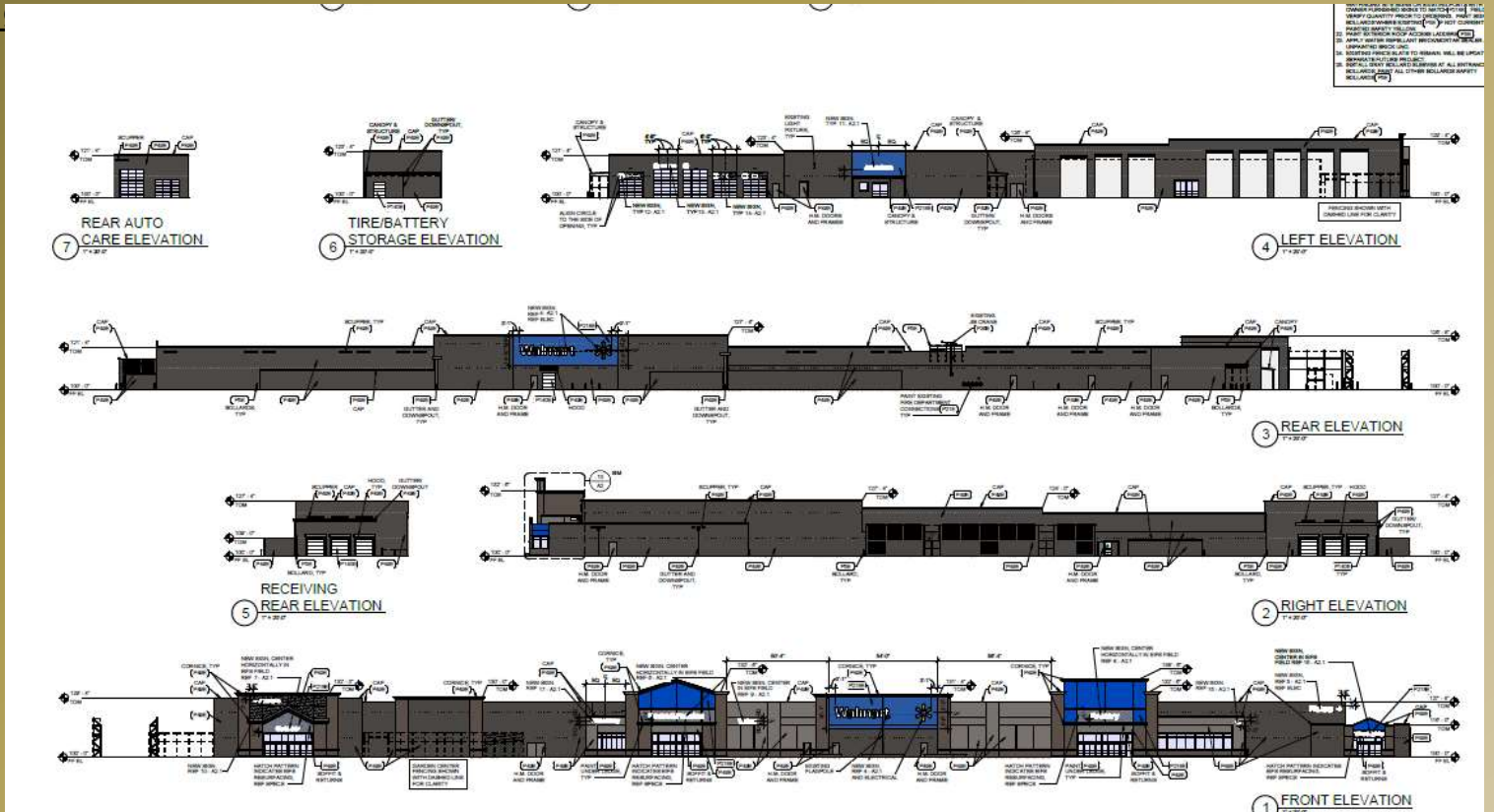
Grand Rapids City Council Meeting



CITY OF  
**GRAND RAPIDS**  
IT'S IN MINNESOTA'S NATURE

# CUP Amendment Request

## Proposed Exterior Building Color

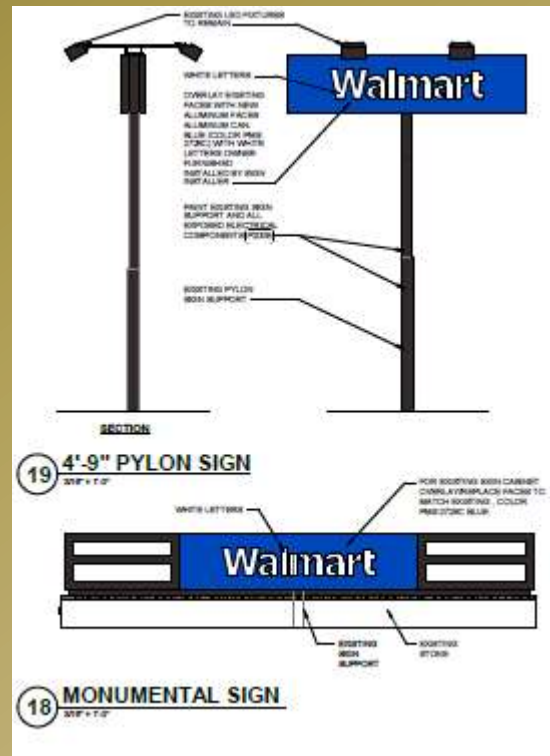




CITY OF  
**GRAND RAPIDS**  
IT'S IN MINNESOTA'S NATURE

# CUP Amendment Request

## Proposed Exterior Signage Changes:





CITY OF  
**GRAND RAPIDS**  
ITS IN MINNESOTA'S NATURE

# CUP Amendment Request

## Planning Commission Considerations:

### PLANNING COMMISSION

#### CONSIDERATIONS

#### CONDITIONAL USE PERMIT

1. Will not be detrimental to the public health, safety, morals, or general welfare?  
Why/Why not?
2. Will not cause undue traffic congestion or hazards and will not result in a parking shortage?  
Why/Why not?
3. Will not be injurious to the use and enjoyment or result in a decrease in value of other property in the area?  
Why/Why not?
4. Will not impede the orderly development of other property in the area?  
Why/Why not?
5. Will not impose an excessive burden on parks and other public facilities and utilities?  
Why/Why not?
6. Is consistent with the Comprehensive Plan?  
Why/Why not?



CITY OF  
**GRAND RAPIDS**  
IT'S IN MINNESOTA'S NATURE

# CUP Amendment Request

## Planning Commission Findings and Recommended Conditions:

The amendment will not be detrimental to the public health, safety, morals or general welfare, as it is only changing the building color;

The amendment will not cause undue traffic congestion or hazards and will not result in a parking shortage;

The amendment will not be injurious to the use and enjoyment or result in a decrease in value of other property in the area, as the amendment is only related to building color;

The amendment will not impede the orderly development of other property in the area, but through Wal-Mart investing in their property/building, others may invest in their properties;

The amendment will not impose an excessive burden on parks and other public facilities and utilities;

Is consistent with the Comprehensive Plan.

### \* Condition:

That all previously imposed conditions under City Resolution No. 06-130 Et al. remain in effect.



CITY OF  
**GRAND RAPIDS**  
IT'S IN MINNESOTA'S NATURE

# Questions?