

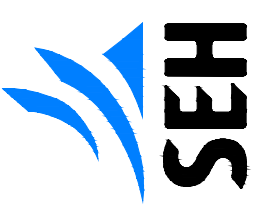
# AIRPORT LAYOUT PLAN

## GRAND RAPIDS - ITASCA COUNTY AIRPORT

### GRAND RAPIDS, MINNESOTA

#### APRIL 2, 2026

3535 VADNAIS CENTER DR  
 PAUL, MN 55109  
 PH: 651.480.2100  
 FAX: 651.480.2150  
 WATTS: 651.355.2055  
 www.sehinc.com



I HEREBY CERTIFY THAT THIS PLAN, SPECIFICATION OR SUPPLEMENT AND THAT I AM A DULY LICENSED PROFESSIONAL ENGINEER UNDER THE LAWS OF THE STATE OF MINNESOTA.

Shawn McManis, PE  
 LICENSE NO. 49555  
 DATE: 4/10/2020

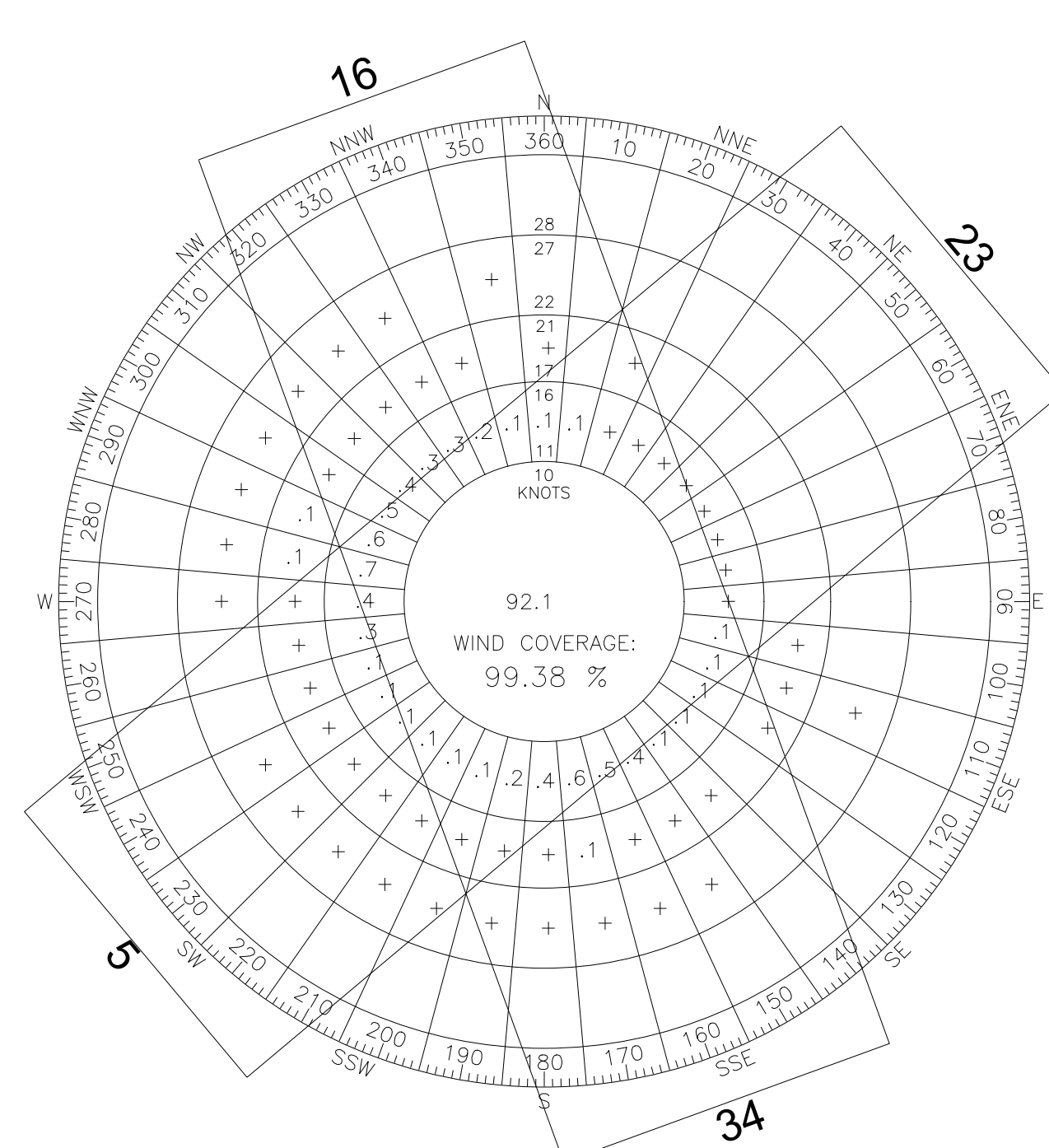
GRAND RAPIDS - ITASCA COUNTY AIRPORT LAYOUT PLAN  
 GRAND RAPIDS, MN

MARK DATE DESCRIPTION REVISIONS

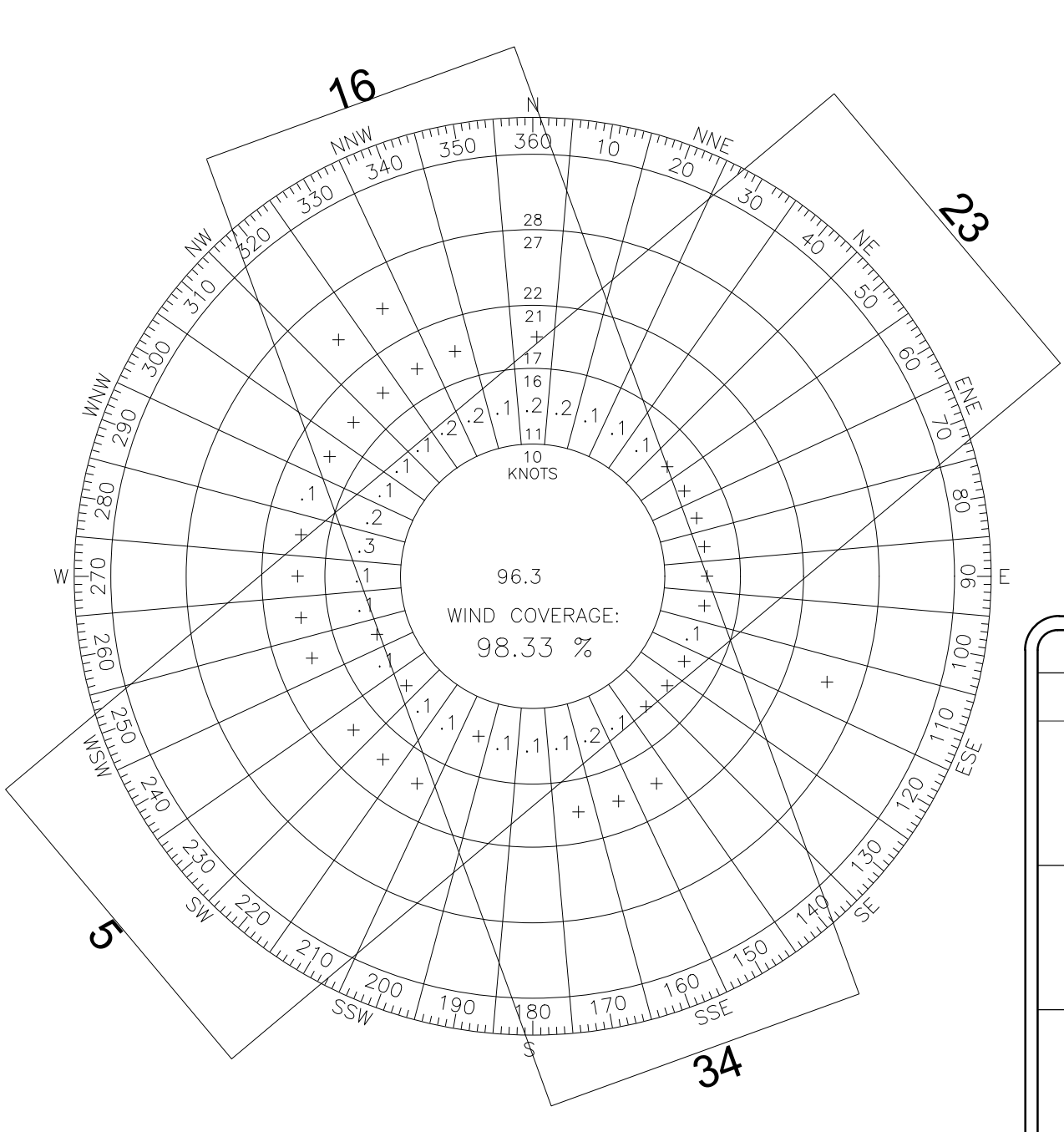
SEH FILE NO. 133788  
 ISSUE DATE 4/2/2026  
 DESIGNED BY J.M.Z.  
 DRAWN BY B.L.M.  
 Short Elliott Hendrickson, Inc. © (SEH)  
 © 2015 Short Elliott Hendrickson, Inc.

SHEET TITLE TITLE SHEET

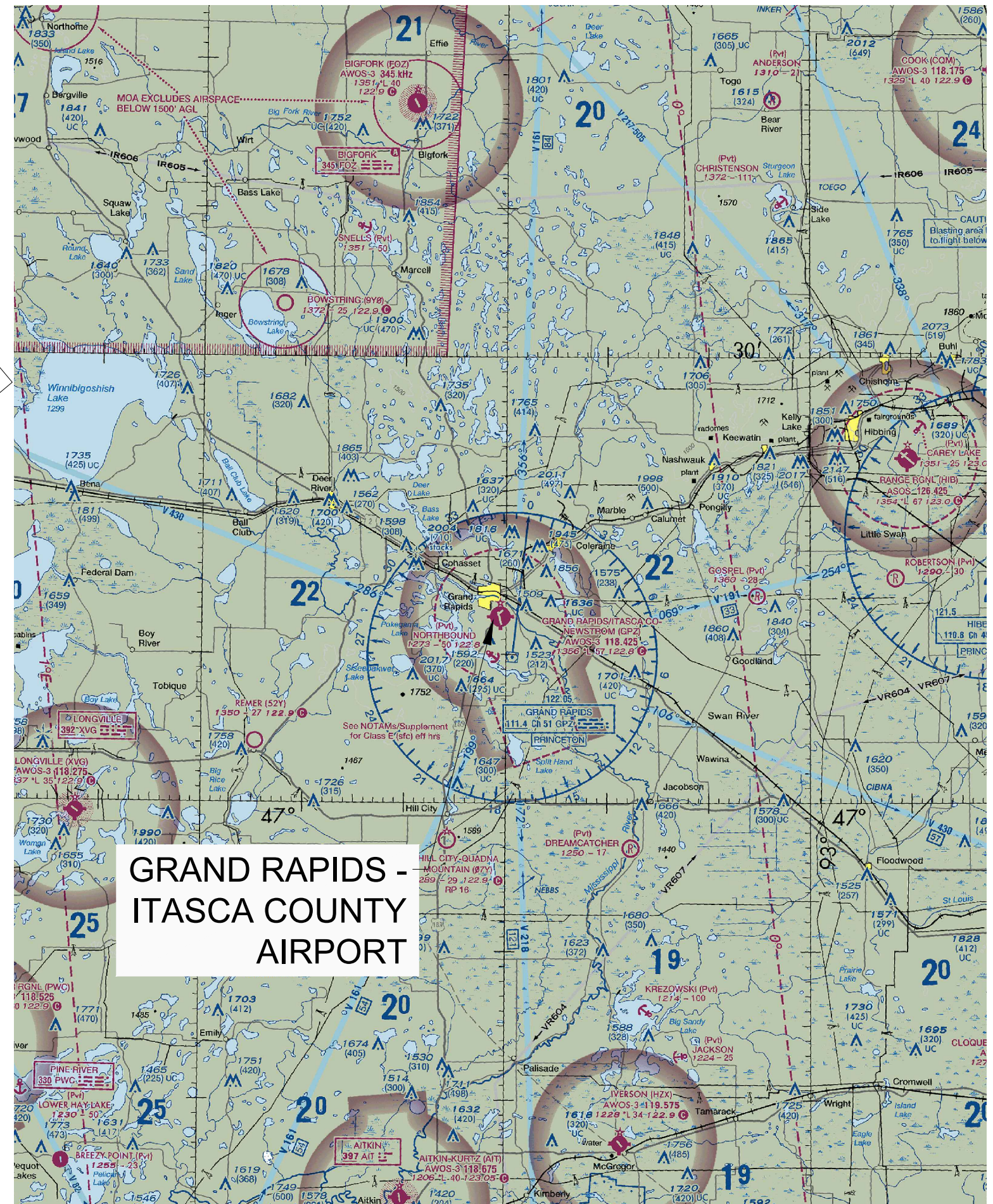
SHEET 1



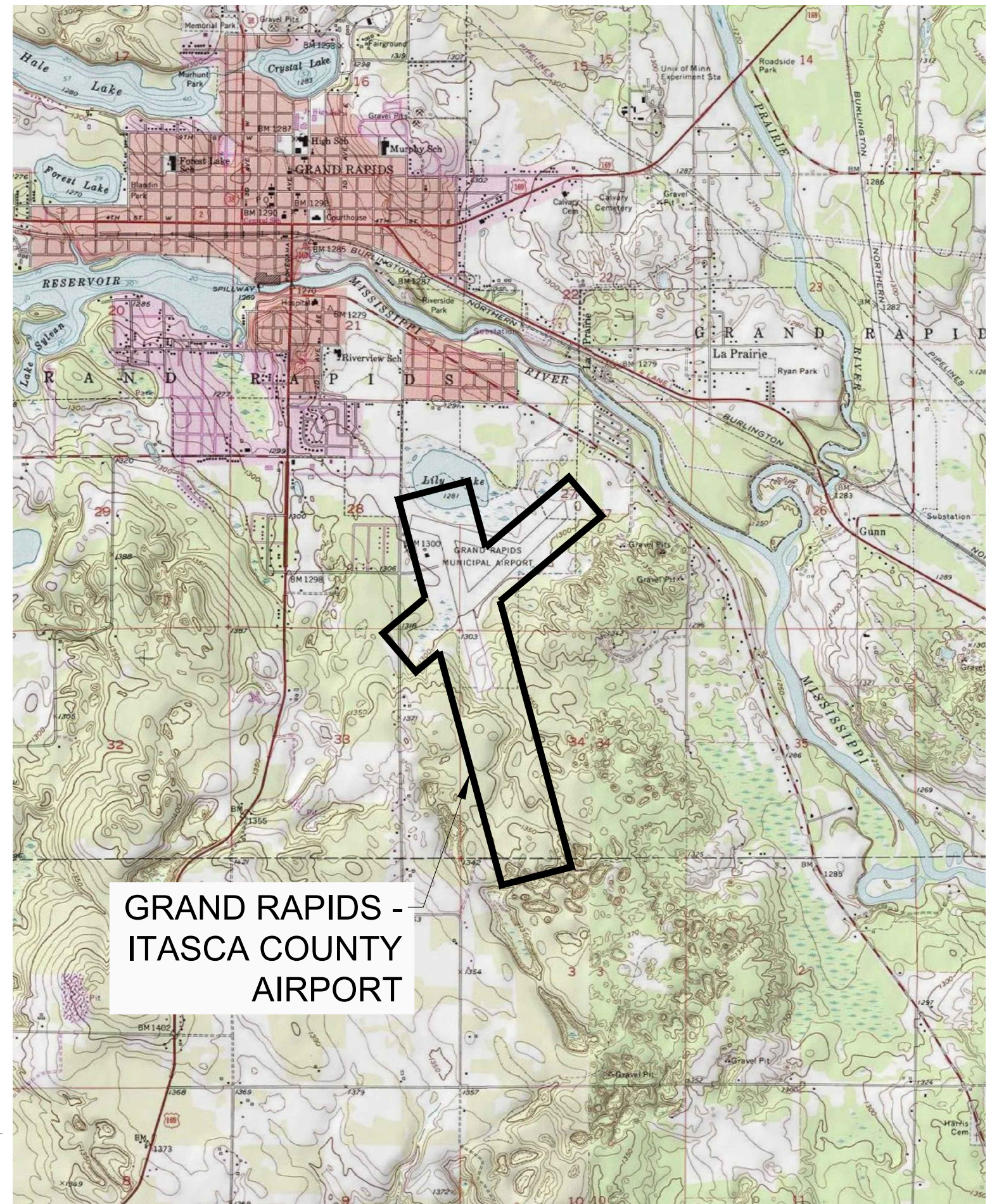
ALL WEATHER WIND ROSE  
 (RWYs 16/34 & 5/23 = 13 kts)



INSTRUMENT FLIGHT WIND ROSE  
 (RWYs 16/34 & 5/23 = 13 kts)



GRAND RAPIDS - ITASCA COUNTY AIRPORT



GRAND RAPIDS - ITASCA COUNTY AIRPORT

MAGNETIC DECLINATION = 0°07' E (0'4" W/YR)  
 SOURCE: NATIONAL GEOPHYSICAL DATA CENTER  
 WEB SITE = 05/15/2018  
<https://www.ngdc.noaa.gov/geomag-web/#declination>

		WIND COVERAGE		
		10.5 KNOTS	13 KNOTS	16 KNOTS
RUNWAY 16/34	ALL	83.37%	90.25%	97.80%
	VFR	81.38%	88.73%	97.21%
RUNWAY 5/23	ALL	94.77%	97.57%	99.37%
	VFR	94.55%	97.29%	99.22%
COMBINED	ALL	97.43%	99.38%	99.85%
	VFR	97.48%	99.24%	99.81%
	IFR	96.60%	98.33%	99.11%

SOURCE: Grand Rapids Itasca County Airport AWOS, 2006 to 2015. Obtained from the National Climatic Data Center.

AIRPORT DATA			
	EXISTING	FUTURE	
AIRPORT ELEVATION	1,355.7'	SAME	
AIRPORT REFERENCE POINT (LATITUDE)	47° 12' 33.42" N	47° 12' 33.45" N	
(LONGITUDE)	93° 30' 35.80 W	93° 30' 35.88 W	
MEAN MAX. TEMP. OF HOTTEST MONTH	80.2° F (JULY)	N/A	
TAXIWAY LIGHTING	MITLs	SAME	
NAVIGATIONAL AIDS	BEACON, ILS, LOC, GS, VOR, MALSR	SAME	
MISCELLANEOUS FACILITIES	LIGHTED WINDCONE, PAPIs, HIRLS, MIRLS, REILs AWOS	SAME	
NPIAS ROLE	REGIONAL	SAME	
MN SASP CLASSIFICATION	KEY	SAME	
AIRPORT REFERENCE CODE (ARC)	B-II	SAME	
APPROACH MINIMUMS RUNWAY 16(17)	NPI = 1 MILE	SAME	
APPROACH MINIMUMS RUNWAY 34(35)	PI = 1/2 MILE	SAME	
APPROACH MINIMUMS RUNWAYS 5/23	VISUAL	SAME	

Federal Aviation Administration

**CONDITIONALLY APPROVED**

Subject to the comments in the airspace determination letter

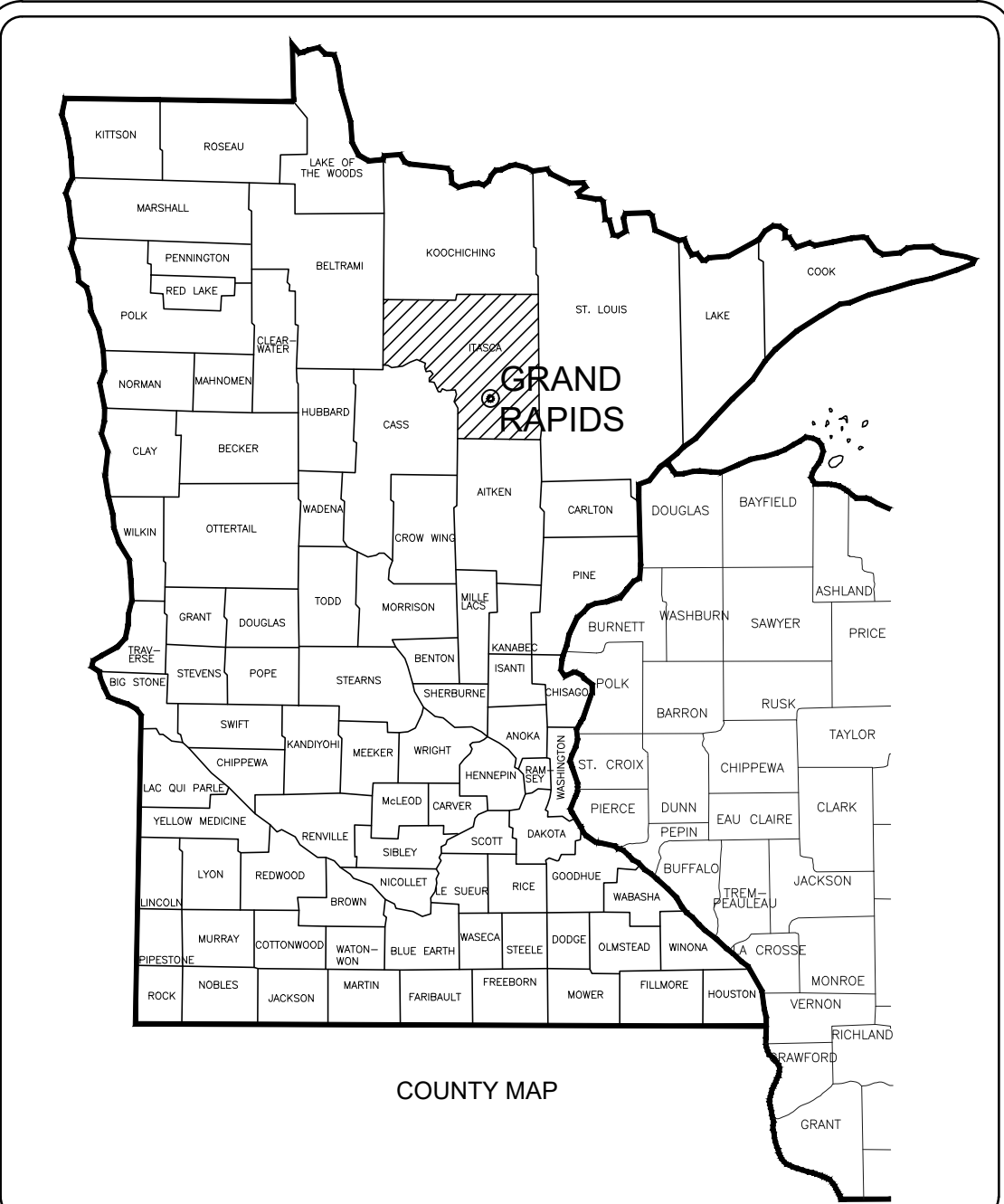
FAA Dakota-Minnesota Airports District Office

Aeronautical Study Number(s):  
 2026-AGL-5997-NRA

DEPARTMENT OF TRANSPORTATION AERONAUTICS

**CONDITIONALLY APPROVED**

NAME: Regional Representative DATE:



INDEX OF SHEETS

- TITLE SHEET
- AIRPORT LAYOUT PLAN
- DATA SHEET
- PART 77 AIRPORT AIRSPACE
- RW 34(35) PART 77 PRECISION APPROACH AIRSPACE
- EXIST. & FUT. RUNWAY 16/17 APPROACH PLAN & PROFILE
- EXIST. & FUT. RUNWAY 34/35 APPROACH PLAN & PROFILE
- EXIST. & FUT. RUNWAY 5 APPROACH PLAN & PROFILE
- EXIST. & FUT. RUNWAY 23 APPROACH PLAN & PROFILE
- BUILDING AREA PLAN
- LAND USE AND ZONING
- EXHIBIT 'A' PARCEL KEY
- EXHIBIT 'A' NORTH DETAILS
- EXHIBIT 'A' NORTH CENTRAL DETAILS
- EXHIBIT 'A' SOUTH DETAILS
- EX. 'A' EXISTING USES AND EASEMENTS
- EX. 'A' ENCUMBRANCE DETAILS

PLAN APPROVAL

AIRPORT SPONSOR

Approved \_\_\_\_\_

Title \_\_\_\_\_

Date \_\_\_\_\_

ALP REVIEW STATEMENT

On behalf of Short, Elliott, Hendrickson, Inc., this Airport Layout Plan (ALP) was prepared for the Grand Rapids - Itasca County Airport according to the applicable Advisory Circulars, the current version of the ARP SOP No. 2.00 ALP Checklist, and accurately depicts the proposed use of airspace at the time of submittal. The ALP conforms with FAA design standards, except as noted.

Signed: *Kaci Nowicki* Date: 10/3/2018  
 KACI NOWICKI

X:\E\IGRATI\Common\Airport Layout Plan\ALP 2026\CAD\GPZ\_01\_Title.dwg