

Grand Rapids Public Utilities

March 27, 2024 Commission Meeting

Department Head Presentation

Locates

Chad Troumbly – Electric Department Manager



**GRAND RAPIDS
PUBLIC UTILITIES**
Service is Our Nature

Items Covered– Specific to the Homeowner

- When homeowner needs to call?
- How do they?
- Does it cost money? (no)
- What is at risk?
- What is located and what is not?
- How utilities locate
- Summary example

Locates - Homeowners



- Whether the project is large or small, if you are using machine-powered equipment or just a shovel and rake to plant a garden, get your work area marked.
- <https://www.gopherstateonecall.org>
- 1-800-252-1166 / 811
- You must contact GSOC at least 48 hours (not including weekends and holidays) in advance of your plans to excavate.



White Flag
Area of proposed excavation

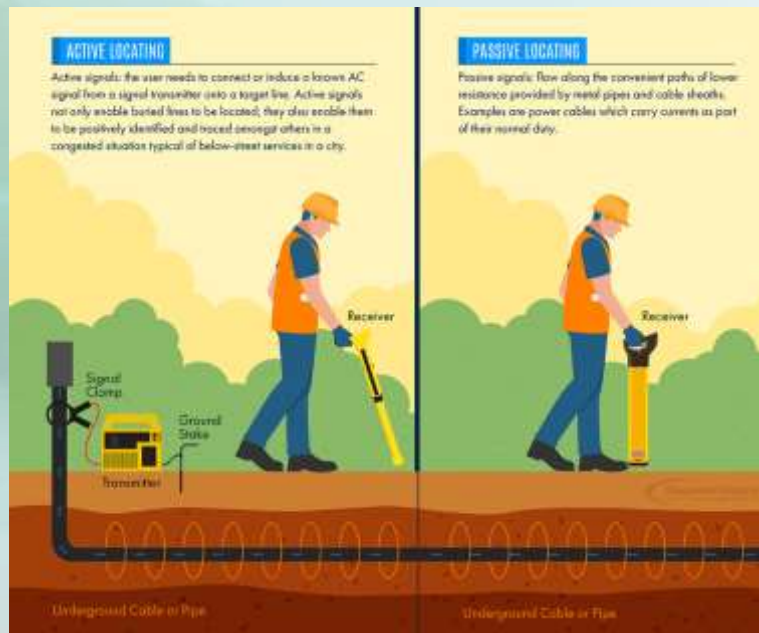
Be Prepared

- When you contact GSOC with a locate request, a series of questions will be asked.
- What is your name, address and phone number?
- What type of work will you be doing? (e.g. planting a tree, installation of fence)
- What is the dig location's address, city, county and nearest intersecting street?
- At the dig location, where will you be digging? (e.g. east side of house, within 5-ft. radius of white stake)
- When will you be digging? (i.e. 3 days, next week)
- Ticket Sent to Utilities
- Positive Response
- Will **not** mark Private Utilities



What Grand Rapids Public Utilities Locates and How (Power)

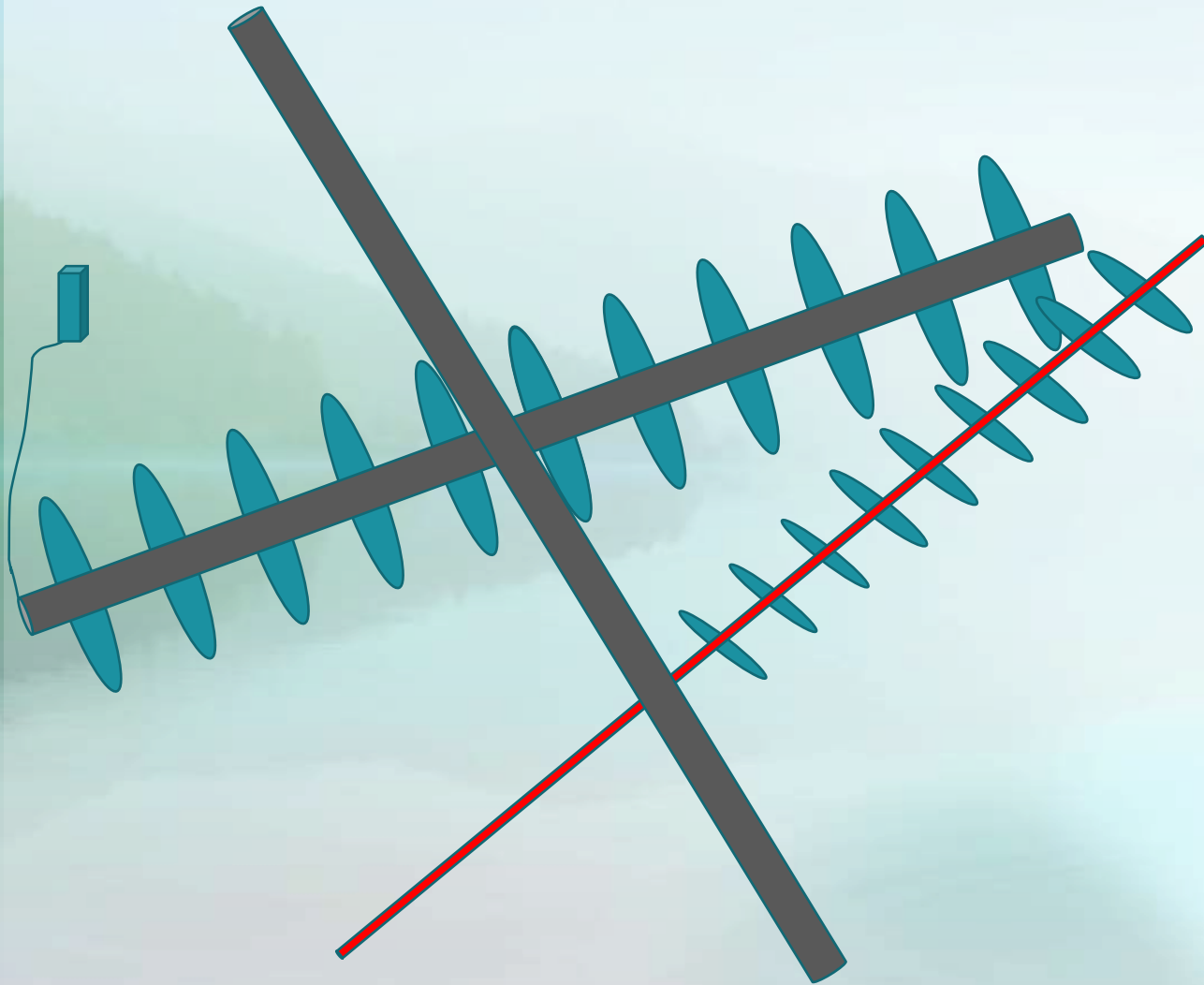
- Connect to Power line and Into Ground
- Active and Passive



[How A Utility Locator Works | Engineering Supply - EngineerSupply](#)



Not an Exact Science



What Grand Rapids Public Utilities Does NOT Locate

PRIVATE FACILITIES: WHAT DOES NOT GET MARKED

Private underground facilities, such as private utility lines and private distribution networks, do not get marked by facility operators. When a property owner or tenant has any type of private underground facility, they are responsible to locate those facilities or hire someone to locate them.

-  ELECTRIC
-  GAS, OIL, AND PROPANE
-  PHONE AND CABLE
-  WATER
-  SEWER

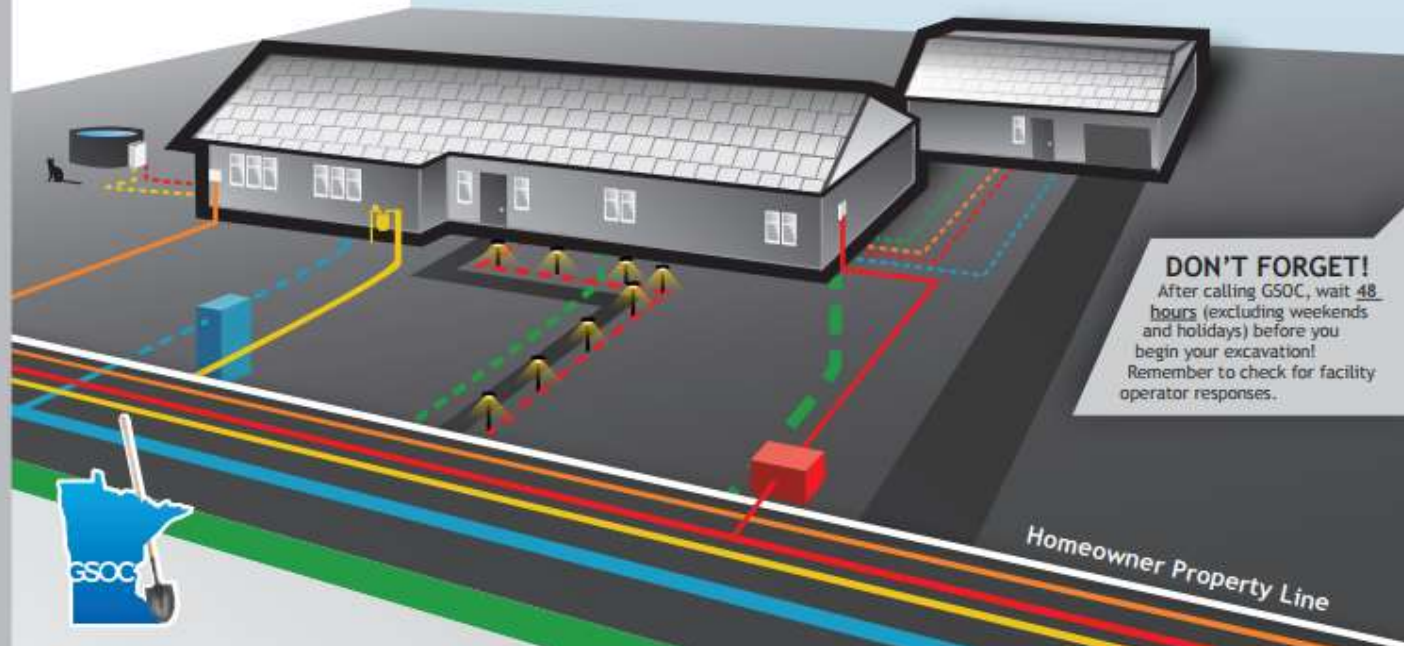
Customer-owned lines usually include any that serve outbuildings, hot tubs, security lighting, pools, and natural gas grills.

The free locating service available through Gopher State One Call (GSOC) applies **ONLY** to public facility operators. The diagram below shows a variety of utilities, some owned by the utility and some by the homeowner.

Those utilities marked by dotted lines are typically owned by the property owner. Those lines will **NOT** be marked by contacting GSOC. Private locating services will mark these for a fee.

For information on private locating companies

www.gopherstateonecall.org/about-gsoc/industry-directory



DON'T FORGET!

After calling GSOC, wait **48 hours** (excluding weekends and holidays) before you begin your excavation! Remember to check for facility operator responses.

Real World Example – Plant a Tree



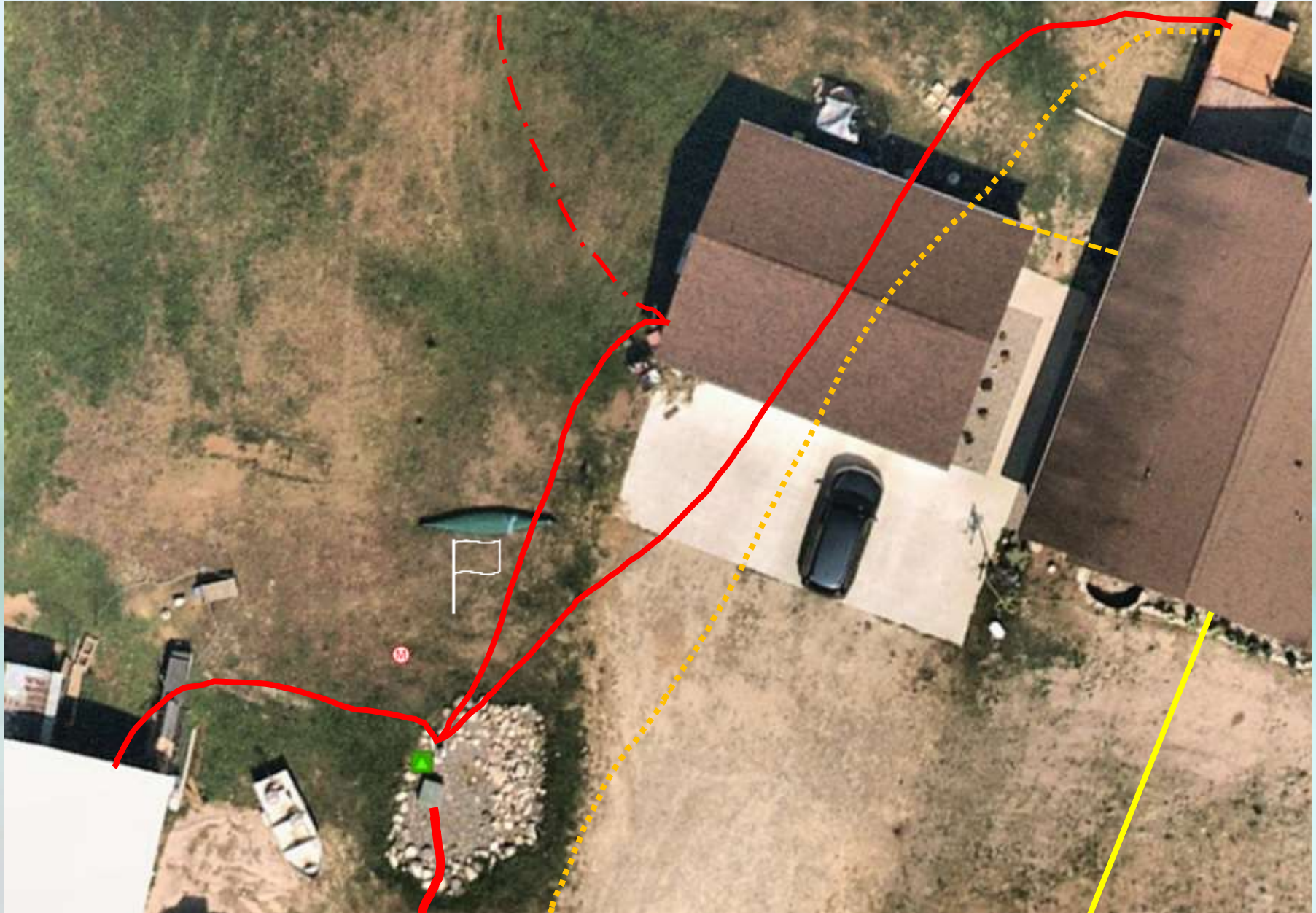
- 2 – Working Days
- Other lines/utilities



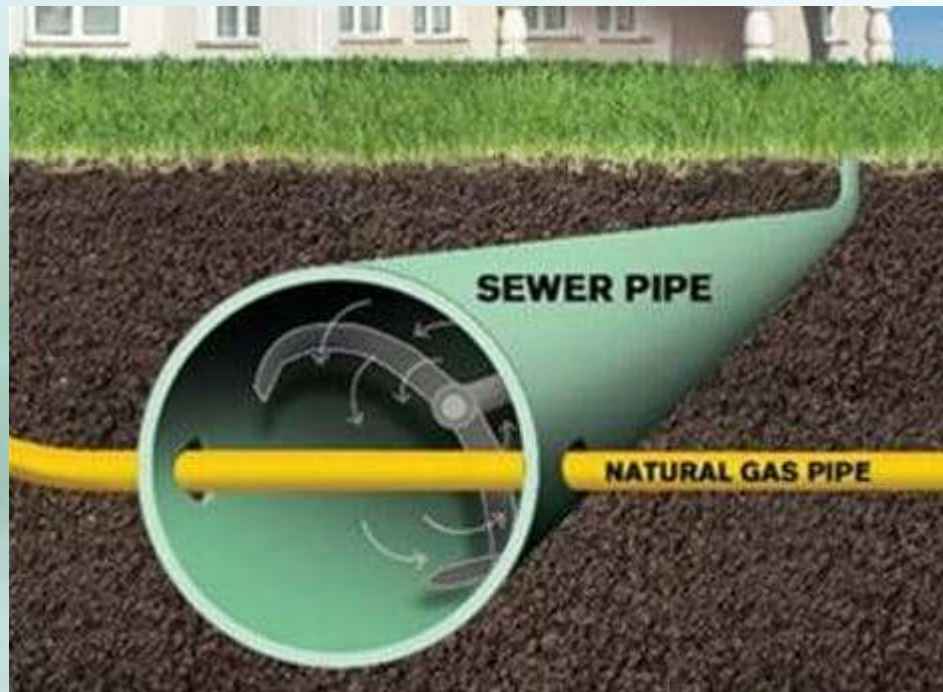
Real World Example – Plant a Tree -2



Previously
nicked
wire



Have Plumber Call Gas Company



Questions / Comments

March 27, 2024 Commission Meeting

Department Head Presentation

Chad Troumbly – Electric Department Manager



**GRAND RAPIDS
PUBLIC UTILITIES**
Service is Our Nature