

**GRAND RAPIDS  
PUBLIC UTILITIES**

*Service is Our Nature*

500 SE Fourth Street • Grand Rapids, Minnesota 55744

## **ELECTRIC DEPARTMENT MONTHLY REPORT July 2024 Commission Meeting**

### **Electric Load Graph Last Month**

The NEMMPA gross peak was set on 6/25 at 4:30pm. Minnesota Power discharged the battery at 1 MW and was successful at shaving the peak, but it did push the next peak to earlier that day, with a net reduction of 470kW. The battery was exercised a total of 4 times in June.

(see figure 3, red areas).

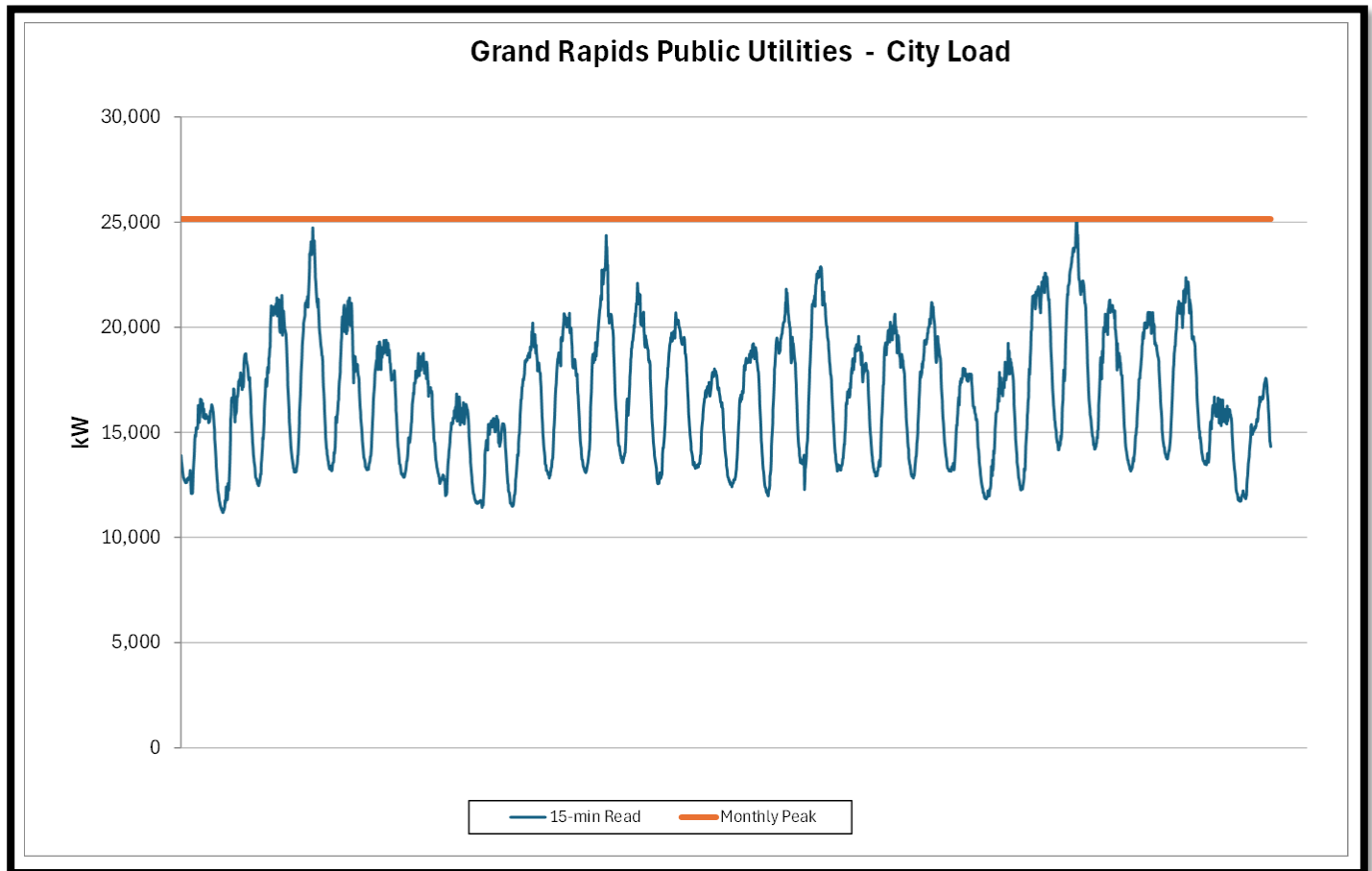


Figure 2: 25,143 kW GR Peak

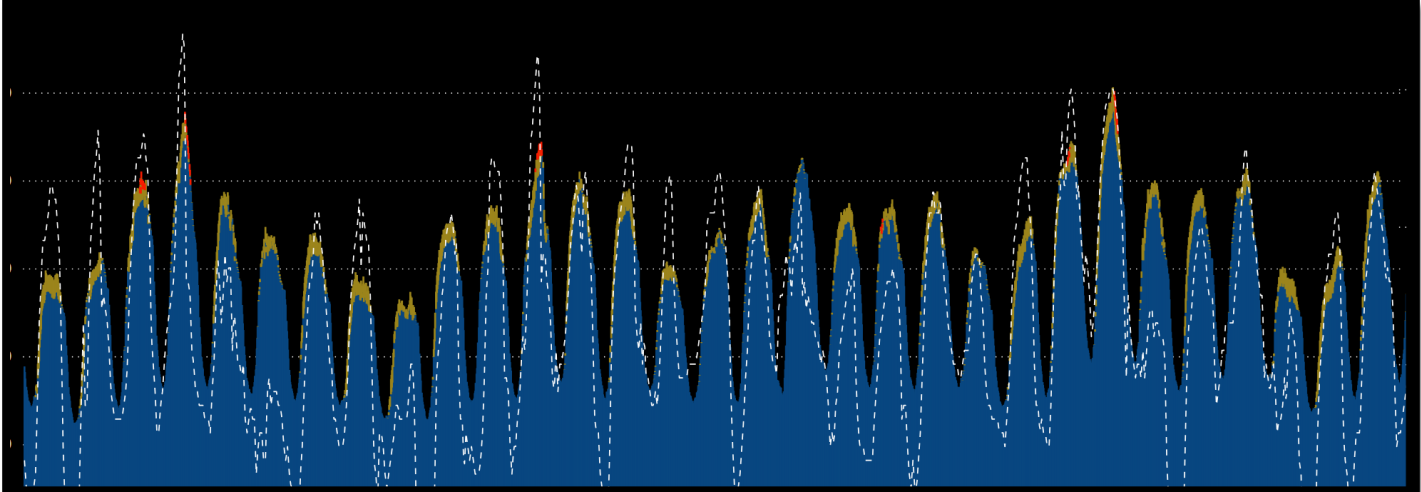


Figure 3: NEMMPA Load with Battery & Solar.

### NEMMPA vs. non-NEMMPA Peak Last Month

The attached graph shows the aggregated NEMMPA peak versus non-NEMMPA peak.

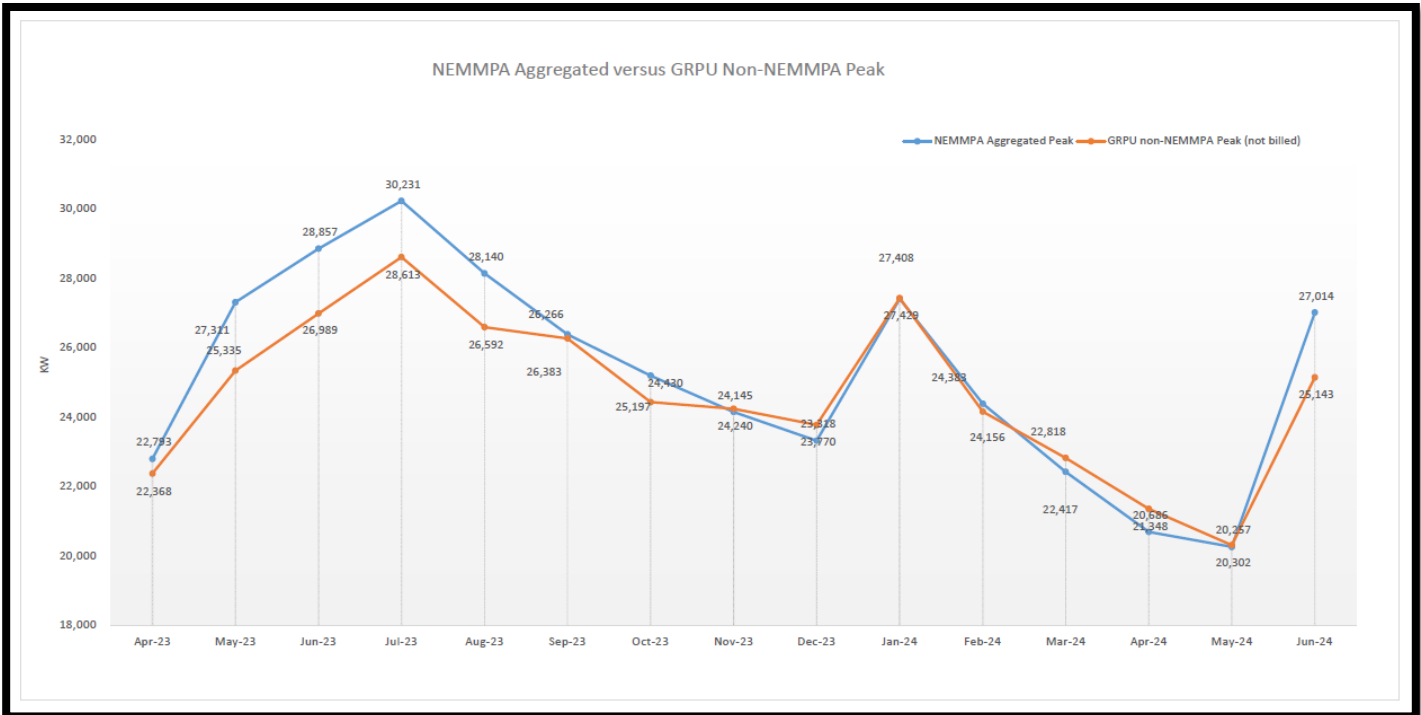


Figure 4: NEMMPA Peak -vs- non-NEMMPA

### Effective Wholesale Electric Power Rate Last Month

The attached graph shows the effective wholesale electric rate.

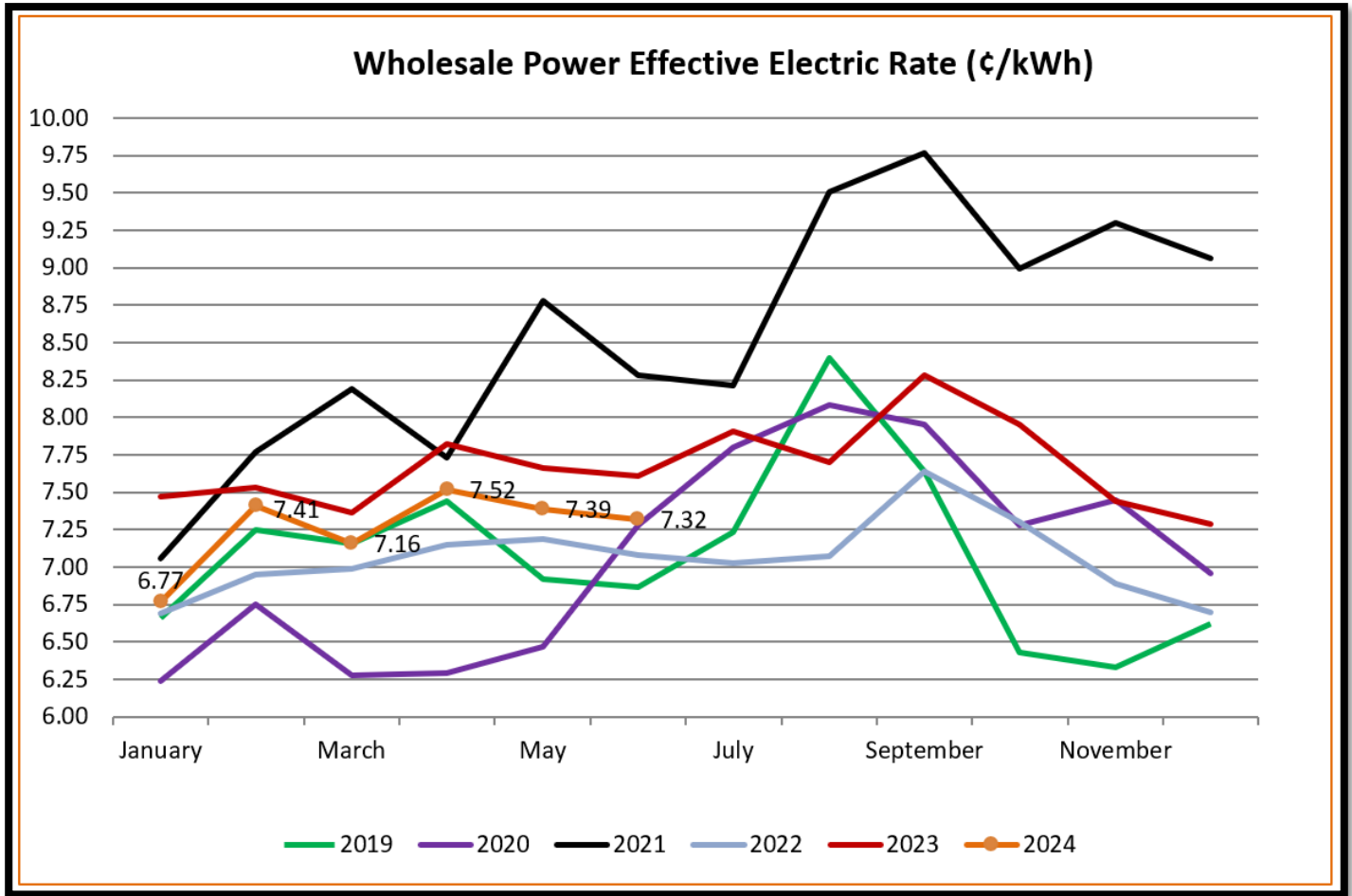


Figure 5: Wholesale Power Effective Elect Rate