

Councilor \_\_\_\_\_ introduced the following resolution and moved for its adoption:

**Resolution No. 22-**

**Resolution Reestablishing Precincts and Polling Places**

WHEREAS, the legislature of the State of Minnesota has been redistricted; and

WHEREAS, Minnesota Statute section 204B.14, subd. 3 (d) requires that precinct boundaries must be reestablished within 60 days of when the legislature has been redistricted or at least 19 weeks before the state primary election, whichever comes first;

NOW, THEREFORE BE IT RESOLVED that the City Council of the City of Grand Rapids, County of Itasca, State of Minnesota hereby reestablish the boundaries of the voting precincts and polling places as follows:

**Precinct One (1): Grand Rapids Fire Hall, 104 SE 11<sup>th</sup> Street**

\*See Map Attached

**Precinct Two (2): Grand Rapids Area Library, 140 NE 2<sup>nd</sup> Street**

\*See Map Attached

**Precinct Three (3): IRA Civic Center, 1401 NW 3<sup>rd</sup> Avenue**

\*See Map Attached

**Precinct Four (4): Zion Lutheran Church, 2901 S. US Highway 169**

\*See Map Attached

Attached to this resolution, for illustrative purposes, is a map showing said precincts.

Adopted by the Council this 14<sup>th</sup> day of March, 2022.

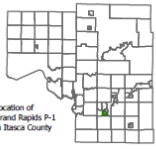
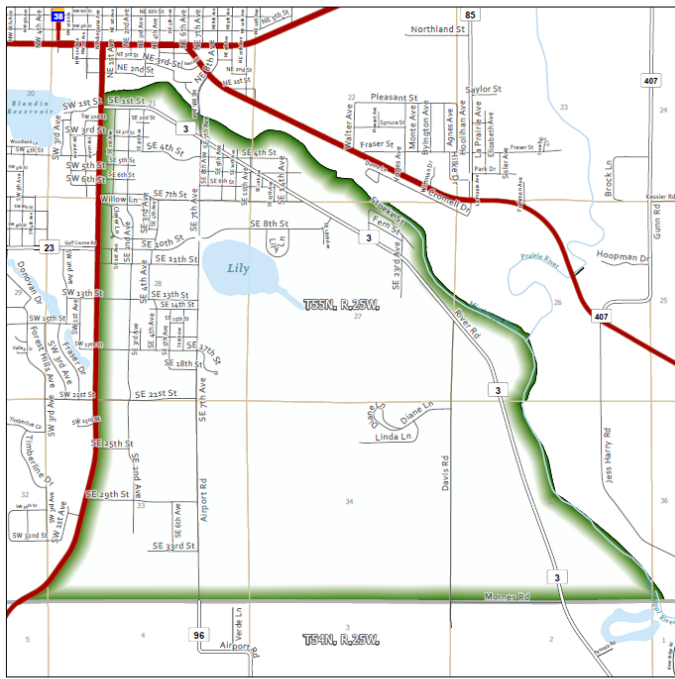
\_\_\_\_\_  
Dale Christy, Mayor

ATTEST:

\_\_\_\_\_  
Kimberly Gibeau, City Clerk

Councilor \_\_\_\_\_ seconded the foregoing resolution and the following voted in favor thereof; and the following voted against same: None; whereby the resolution was declared duly passed and adopted.

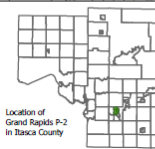
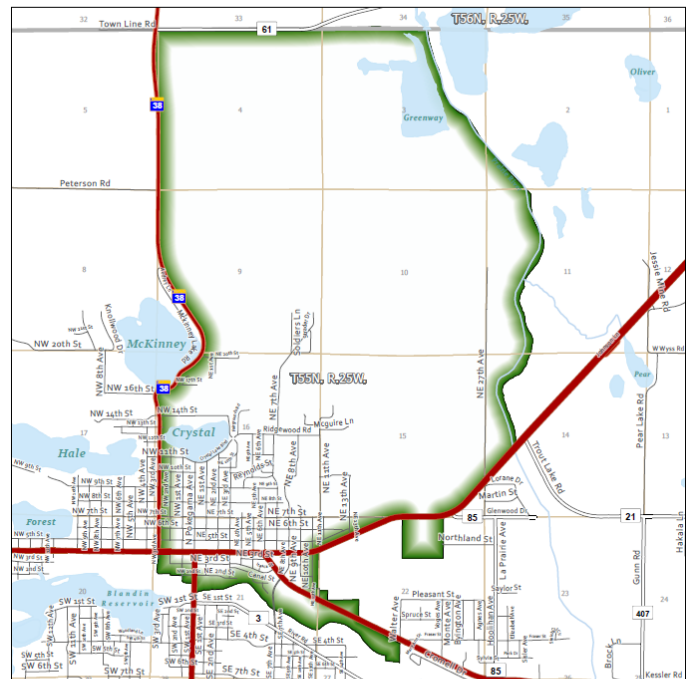
Grand Rapids P-1



0 0.35 0.7 Miles  
Basca Geographic Information System "decision support through automation"

- Roads**
- US Highway
  - MN Highway
  - County Road
  - Township Road
  - Municipal Street
  - Forest Access Road
  - Private or Unknown
  - Alleyway
  - Lake
  - Township
  - Section
  - Voting Precinct
  - Stream

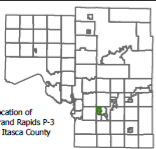
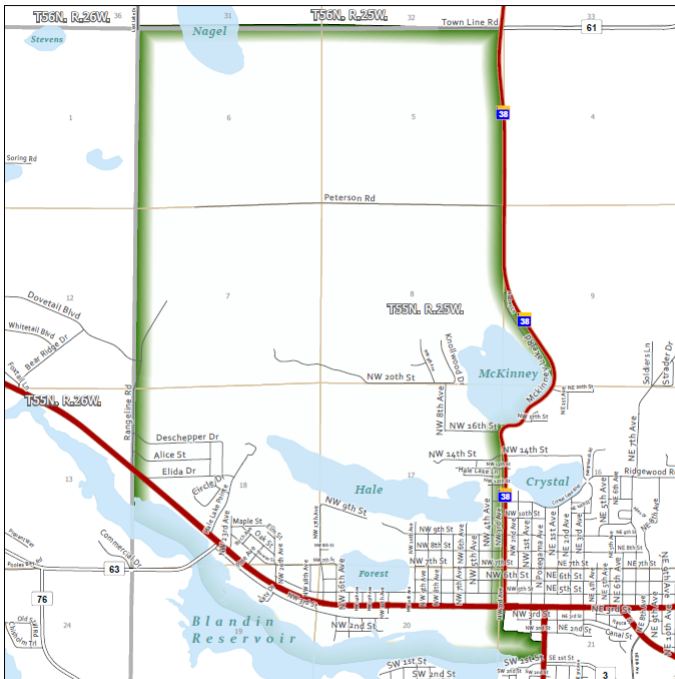
Grand Rapids P-2



0 0.45 0.9 Miles  
Basca Geographic Information System "decision support through automation"

- Roads**
- US Highway
  - MN Highway
  - County Road
  - Township Road
  - Municipal Street
  - Forest Access Road
  - Private or Unknown
  - Alleyway
  - Lake
  - Township
  - Section
  - Voting Precinct
  - Stream

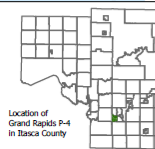
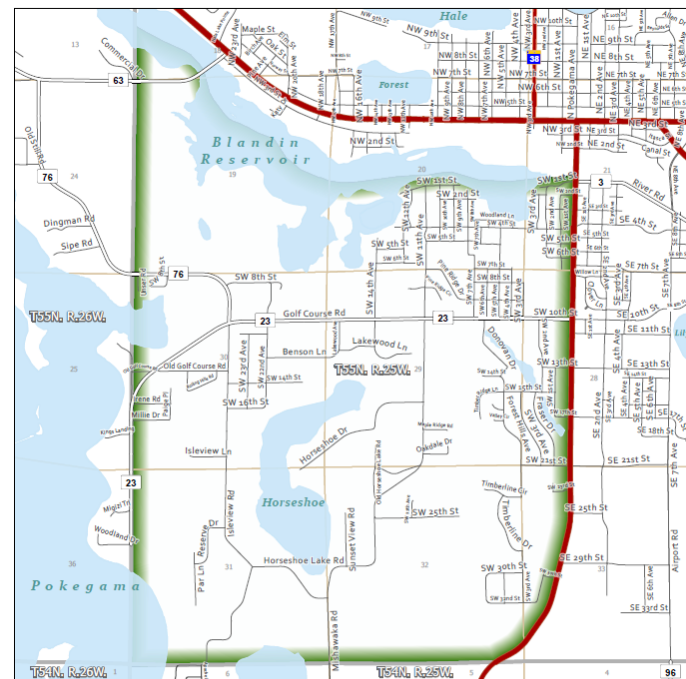
Grand Rapids P-3



0 0.4 0.8 Miles  
Basca Geographic Information System "decision support through automation"

- Roads**
- US Highway
  - MN Highway
  - County Road
  - Township Road
  - Municipal Street
  - Forest Access Road
  - Private or Unknown
  - Alleyway
  - Lake
  - Township
  - Section
  - Voting Precinct
  - Stream

Grand Rapids P-4



0 0.35 0.7 Miles  
Basca Geographic Information System "decision support through automation"

- Roads**
- US Highway
  - MN Highway
  - County Road
  - Township Road
  - Municipal Street
  - Forest Access Road
  - Private or Unknown
  - Alleyway
  - Lake
  - Township
  - Section
  - Voting Precinct
  - Stream