

# Grand Rapids Public Utilities

June 25, 2025

Operational and Capital Updates

GRPU Management Team



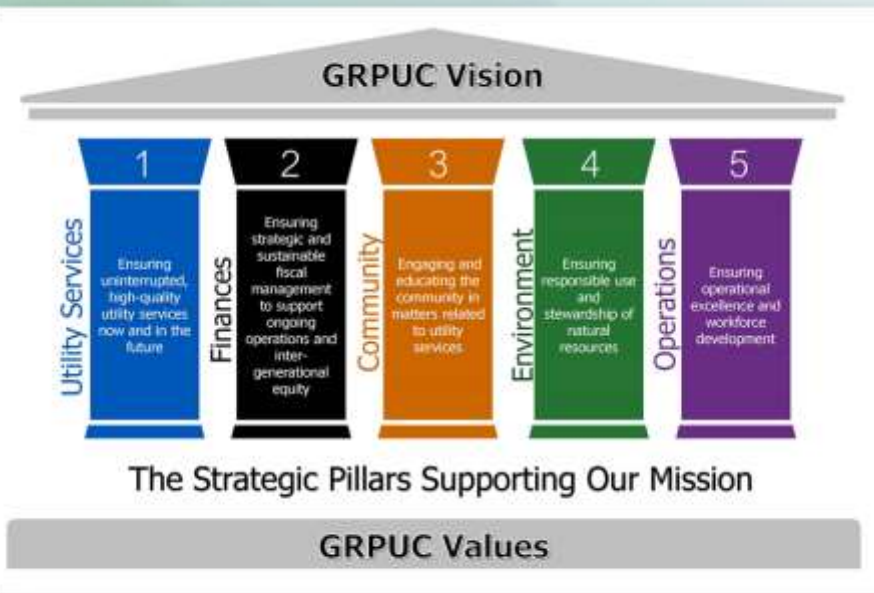
**GRAND RAPIDS  
PUBLIC UTILITIES**  
*Service is Our Nature*



# MISSION VISION VALUES

## WHO WE ARE

**Grand Rapids Public Utilities (GRPU) is a statutory municipal utility established by the city of Grand Rapids, Minnesota. The Grand Rapids Public Utilities Commission (GRPUC) provides full control, operation and management of the GRPU electric power distribution system, the water production, treatment and distribution systems, and the wastewater collection and treatment systems.**



## Our Vision

Our vision is to be a dynamic public asset for the thriving community of Grand Rapids, enhancing lives and fostering growth through excellence in the provision of essential utility services.



## Our Mission

Our mission is to empower GRPU team members to deliver safe, reliable, affordable, sustainable, and customer-focused utility services for our community.



## Our Values

### *Safety*

We hold paramount the well-being of our employees and the public in all operations.

### *Integrity*

We uphold ethical standards and foster trust with all stakeholders.

### *Customer Focus*

We prioritize customer needs and satisfaction in all our decisions and actions.

### *Efficiency*

We maximize resources to provide cost-effective services without compromising quality.

### *Reliability*

We consistently deliver high-quality utility services and strive for uninterrupted access.

### *Sustainability*

We employ environmentally responsible practices in our operations and services.

### *Transparency*

We openly share information and decision-making processes, promoting informed community involvement.

# Uninterrupted, High-Quality Utility Services (US)

Operations: 2025 Legislative Efforts by Julie Kennedy

[Link: MMUA St Paul Minnesota Legislative Video Update June 2025](#)





# Uninterrupted, High-Quality Utility Services (US)

## Capital: Well 3 Rehabilitation by Steve Mattson

- Rehabilitation based on schedule and inspection results of high amps
- Good preventative maintenance and maintain well efficiency
- Well 3 is one of five that provides water to plant
- Phase 1 clean and service well, phase 2 rebuild pump and piping
- Cleaning was successful, initial improvement but need to continue to monitor
- Installed 95 ft of new column, rebuilt pump and motor



Project Name	Location	Status/ Completion Date	Budgeted Amount	Actual Spent	Funding Source
Well 3 Rehabilitation	WTP	Completed	\$51,594	\$52,270	Revenue





# Uninterrupted, High-Quality Utility Services (US)

## Capital: Water Booster Station Upgrades by Steve Mattson

- Combined booster station panel view project (\$30,880) and VFD upgrade project (\$17,112) into single project
- Updating the PLC, panel view and variable frequency drives
- Used to fill south water tower
- Used to maintain distribution pressure during tower rehabilitation
- EPA audit – login protection
- Contracts signed and equipment on order



Project Name	Location	Status/ Completion Date	Budgeted Amount	Actual Spent	Funding Source
Water Booster Upgrades	Mid Tower	Started	\$47,992	\$0	Revenue



# Engaging and Educating the Community (EC)

## Operations: Water Summit and AWWA Conference by Steve Mattson

- 11<sup>th</sup> year of Youth Water Summit for area 5<sup>th</sup> graders
  - Goal is to supplement grade school classes with water science
  - GRPU presented on water sources, water plant operations, distribution and briefly on wastewater treatment
- AWWA NE Water School Conference
  - MDH, vendors and water operators from throughout the state
  - Topics: MDH updates, lead and copper, EPA inspections, funding, emerging technology, and Legionella



Photo credit Itasca Waters

2025 MN-AWWA Northeast District  
Waterworks Operator School

April 15-17, 2025

Timberlake Lodge  
Grand Rapids, Minnesota





# Engaging and Educating the Community (EC)

## Operations: Vegetation Management by Chad Troumbly

### Policy, Specifications, and Examples

- Policy 4.3.301- 2 Main Sections – Veg Management & Exhibit A
  - Purpose, Clearance, Goals, **Danger Trees**, Fast Growing Trees, Access (10 Feet minimum)
  - Work Together – GRPU, Customers, Contractors
- Specifications
  - Desirable Native Species
  - Z-133.1 American National Standard for Tree Care Operations – Safety Standards
  - Disposal
  - 3-inch Stump/Stubble Height

Trimming type	Services to business/residence zero to 600 volts	Secondaries from pole to pole zero to 600 volts	Primary cables 1000 volts to 23,000 volts
Top clearance	1 foot	3 feet	10 feet*
Side clearance	1 foot	3 feet	6 feet
Overhang clearance	1 foot	3 feet	15 feet

\* Remove if possible

4.4 Required Minimum Clearance

CONIFEROUS TREES	DECIDUOUS	SHRUBS (1)
Northern White Cedar	Mountain Ash ☺	Red-Osier Dogwood (fc)
Red Cedar (Juniper) (f)	Blackcherry *	Other Dogwood Species
Norway pine *	Chokecherry (f)	Mountain Maple
White Pine *	Pincherry (f)	Sumac ☺
White Spruce *	Hackberry	Arrowwood (f)
Ironwood *	High-Bush Cranberry (fc)	
Juneberry (f)	Hazel	
Wild Plum (f)	Honeysuckle	
Smooth Wild Rose		

4.1 Desirable Native Species



# Engaging and Educating the Community (EC)

Operations: Vegetation Management by Chad Troumbly (cont.)

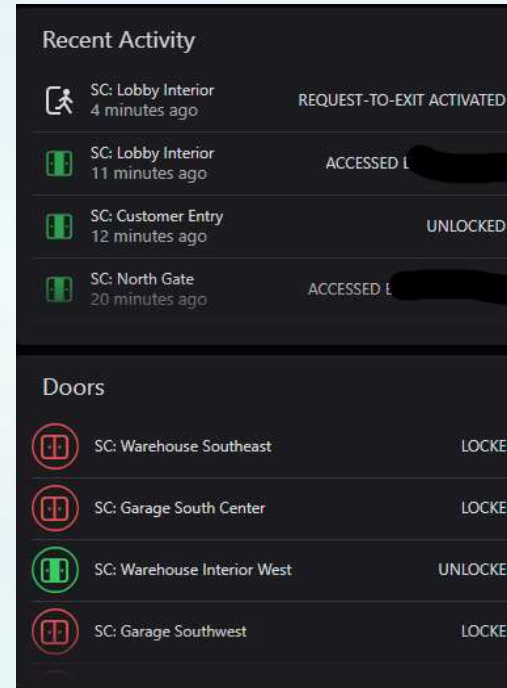




# Operational Excellence (OE)

## Capital: Building Security Upgrade by Mike LeClaire

- Replaced security system is 20+ years old
- Improved access control with new control groups
- Mobile device access and gate control
- Improved monitoring of facilities
- More secure control panels and alerts
- Improved access reporting

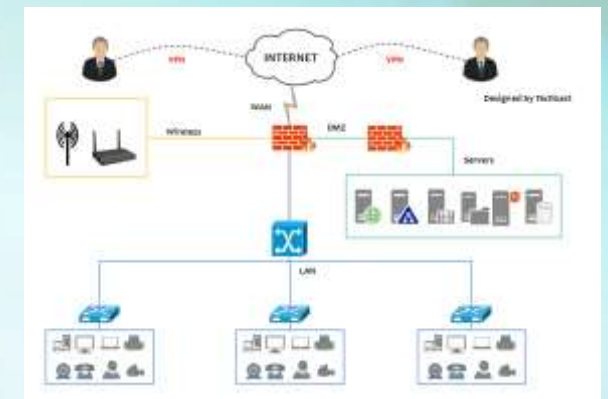
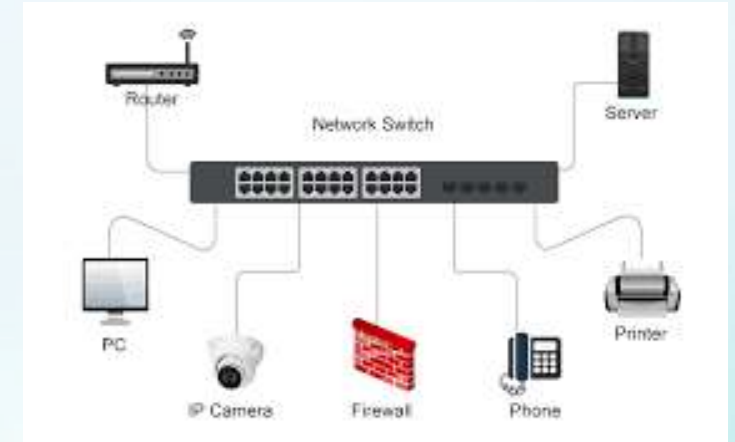


Project Name	Location	Status/ Completion Date	Budgeted Amount	Actual Spent	Funding Source
Building Security Project	Throughout GRPU bldgs	In construction, complete May 2025	\$131,519	\$137,952	Revenue

# Operational Excellence (OE)

## Operations: MetroE Internet Modernization

- Improved site-to-site private connectivity
- Limit site-to-site hardware connections points
- Update outdated switches
- Improve firewall security and redundant reliability for operations
- Allow for flexibility and scalability of future needs and network infrastructure projects
- Reduce hardware and resource maintenance
  - Extend hardware useful life expectancy



# Operational Excellence (OE)

## Operations: June Safety Summary by Julie Kennedy

### Safety Topic This Month:

Safety Brad trained required employees on Fall Protection Safety Training on June 12.

### Safety Committee Program Review This Month:

Safety Brad and the Safety Committee had a walk- through mock OSHA inspection of the Solids Processing Building on June 12<sup>th</sup>.

### Incidents Reported last Month by Department

Administration: None

Business Services: None

Electric: None

Water-Wastewater: None

#### Cumulative Incidents for 2025

Recordable Incidents	0
Lost Time Days 2025	0
Restricted Days 2025	0
First Aid Only (not recordable)	2

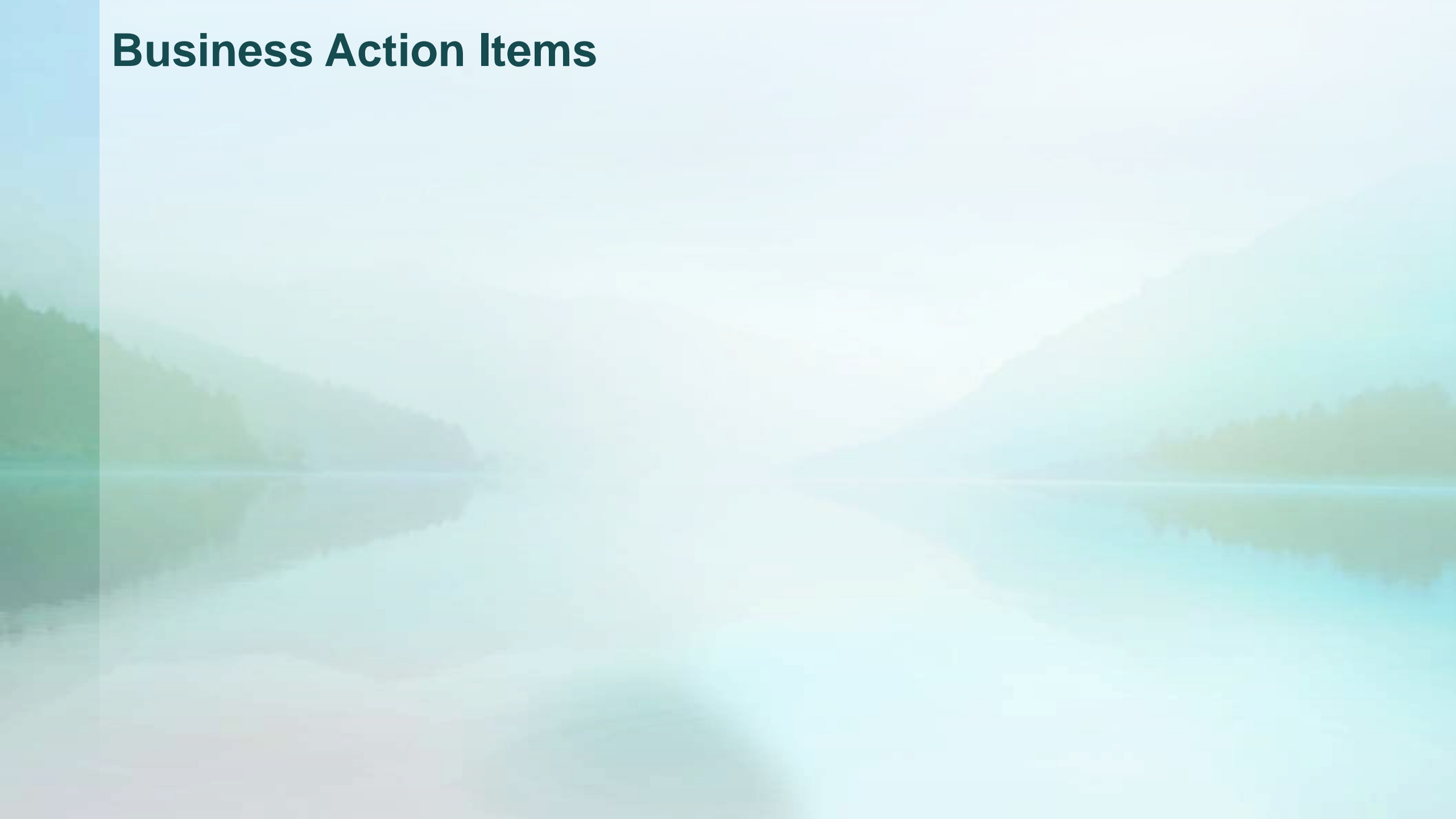
Total FROI 2

#### Recordable Incident 5-year History

	2021	2022	2023	2024	2025
ADMIN	0	0	0	0	0
BUS SVCS	0	0	1	0	0
ELEC	0	0	0	1	0
W-WW	1	0	0	0	0
TOTAL	1	0	1	1	0



# Business Action Items



# Grand Rapids Public Utilities

## Upcoming Commission Meetings

**Work Session: July 9, 2025**

**Regular Meeting: July 23, 2025**



**GRAND RAPIDS  
PUBLIC UTILITIES**  
*Service is Our Nature*