

Index 10 page 26

Book 7 Page 10

CROWDER ADDITION TO GRAND RAPIDS

ITASCA COUNTY, MINNESOTA

SE 1/4 of the NW 1/4 of Section 28, T. 55 N., R. 25 W. of the 4th P. M.

Platted Area — 24.43 Acres Scale: 1 = 100 P. C. Warner, Engineer December, 1948

Dedication

Know All Men by These Presents:

That ROY J. CROWDER, and ARRA M. CROWDER, his wife, are the sole owners and proprietors of 24.43 acres of land, being the North 800.0 feet of the Southeast 1/4 of the Northwest 1/4 of Section 28, Township 55 North, Range 25 West of the 4th P. M., in Itasca County, Minnesota; more particularly described as follows, to-wit:

Beginning at the Northeast Corner of the Southeast 1/4 of the Northwest 1/4 of Section 28, T. 55 N., R. 25 W. of the 4th P. M.; Thence South, on the 1/4 line of Section 28, a distance of 800.0 feet; Thence West, at an angle of 90°02', from South to West, a distance of 1329.18 feet, to the center line of State Trunk Highway No. 169; Thence North, along said center line, at an angle of 89°47', from West to North, a distance of 800.0 feet; Thence East, on the 1/16 line, at an angle of 90°13', from North to East, a distance of 1331.70 feet, to the point of beginning.

And being desirous of platting the same into Lots, Blocks, Streets, Avenues and Alleys, have caused the tract to be surveyed, and the annexed plat thereof to be made in accordance with the Statutes of this State in such cases made and provided.

NOW, THEREFORE, We do hereby ratify and confirm said survey and plat thereof as the plat of "CROWDER ADDITION TO GRAND RAPIDS", and sign, seal, and execute said plat and hereby dedicate to the public use forever the Streets, Avenues and Alleys therein delineated; expressly reserving, however, all iron ore, metals, minerals, fossils, mineral oils and mineral paints, on within or under said land and each and every part thereof, together with the right, license and authority to enter upon said lands to explore for, mine and remove the same.

IN WITNESS WHEREOF, We have hereunto set our hands and seals this 10th day of December A. D., 1948.

Roy J. Crowder (Seal)
Arra M. Crowder (Seal)

In the presence of

Sam G. Gundersen
Sam Bengtson, Jr.

STATE OF MINNESOTA,
County of Itasca } ss.

On this 10th day of December A. D., 1948, personally appeared before me, Roy J. Crowder and Arra M. Crowder, his wife, to me well known to be the persons who executed the foregoing instrument and acknowledged that they executed the same as their free act and deed.

(Notarial Seal) Sam Gundersen
Notary Public, Itasca County, Minn.
My commission expires _____

STATE OF MINNESOTA,
County of Itasca } ss.

I, P. C. Warner, do hereby certify that I am a Professional Engineer and Surveyor of Itasca County, Minnesota; that I have at the request of the proprietors thereof made a careful survey of the property described in the foregoing certificate of the proprietors and have platted the same into lots, blocks, streets, avenues and alleys, that the plat is a correct representation of the survey, that all distances are correctly shown; that monuments for the guidance of future surveys have been correctly placed in the ground as shown; that the outside boundary lines are correctly designated on the plat; that there are no wet or swampy lands except as designated; that no public highways or thoroughfares had been laid out, opened, traveled or existed before such platting was done except as are delineated upon said plat.

Subscribed and sworn to before me this 6th day of December A. D., 1948.

(Notarial Seal) Helen C. Belf
Notary Public, Itasca County, Minn.
My commission expires April 19, 1954

On this 7th day of December the annexed plat of "CROWDER ADDITION TO GRAND RAPIDS" was approved by the Board of County Commissioners of Itasca County, Minnesota, at a regular meeting held at the Court House at Grand Rapids, Minnesota.

P. C. Warner
Chairman, Board of County Commissioners
R. J. Whaling
Auditor, Itasca County, Minnesota

This is to certify that on this 6th day of December, 1948, I have made an examination of the attached plat of "CROWDER ADDITION TO GRAND RAPIDS", and find the same to be correct and acceptable for record.

Sam Bengtson, Jr.
Surveyor, Itasca County, Minnesota

This is to certify that the taxes on the above described property for the year 1947 are paid this 6th day of December A. D., 1948.

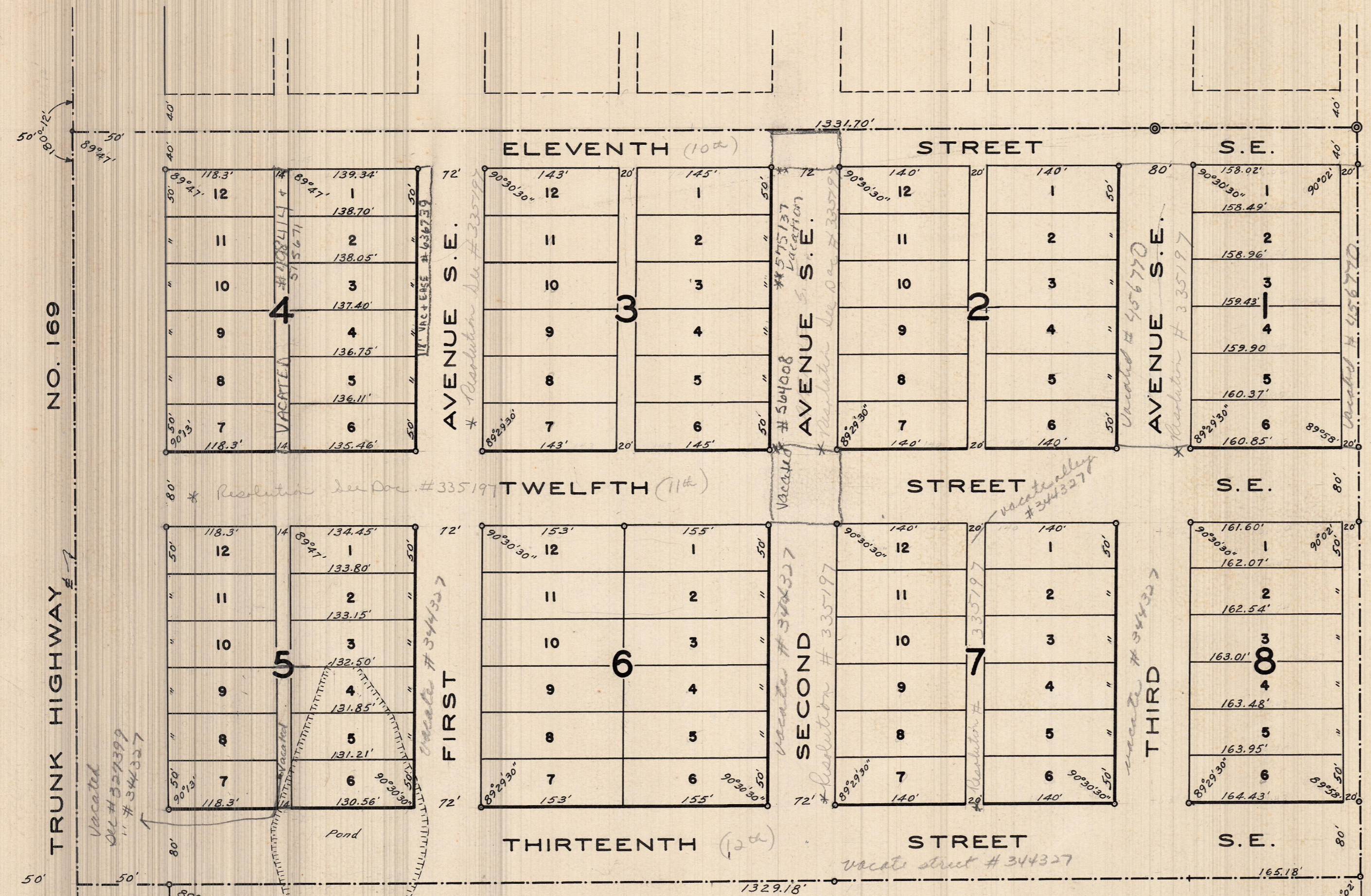
Shad Kano
Treasurer of Itasca County, Minn.

This is to certify that on this 6th day of December A. D., 1948, there are no unpaid back taxes on the above described property.

R. J. Whaling
Auditor of Itasca County, Minn.

This is to certify that the annexed plat of "CROWDER ADDITION TO GRAND RAPIDS" was filed for record in my office on the 11th day of December A. D., 1948.

Jerome Meyers
Register of Deeds, Itasca County, Minn.



* Resolution Doc # 335197 is terminated by Doc # 412115