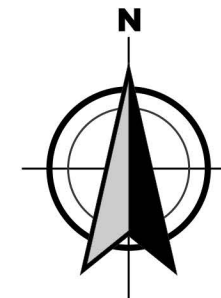
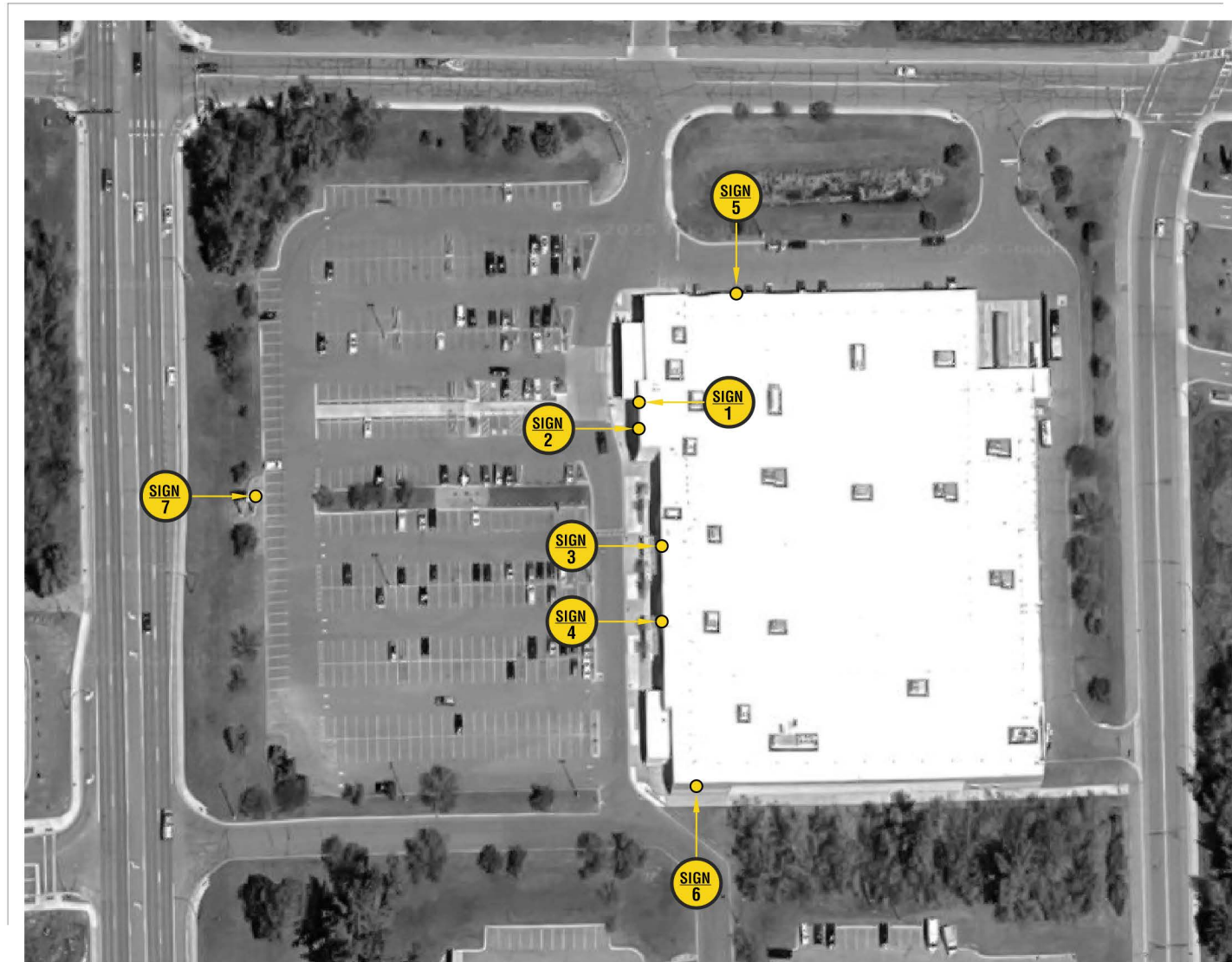




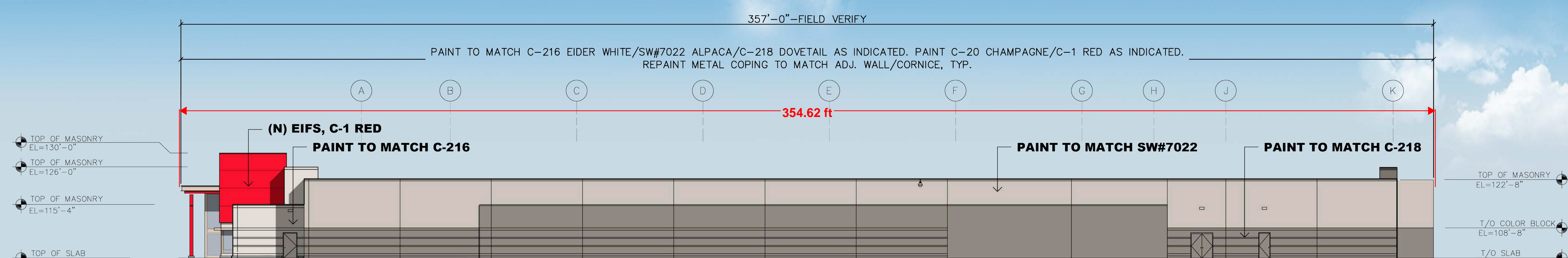
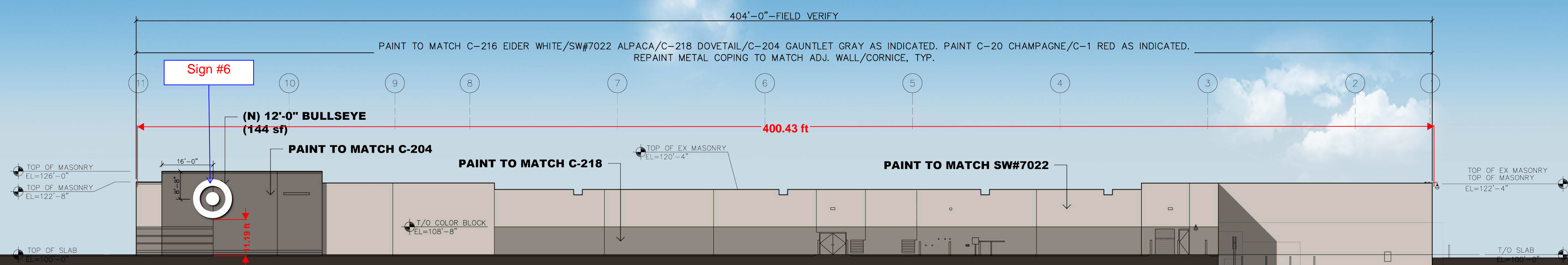
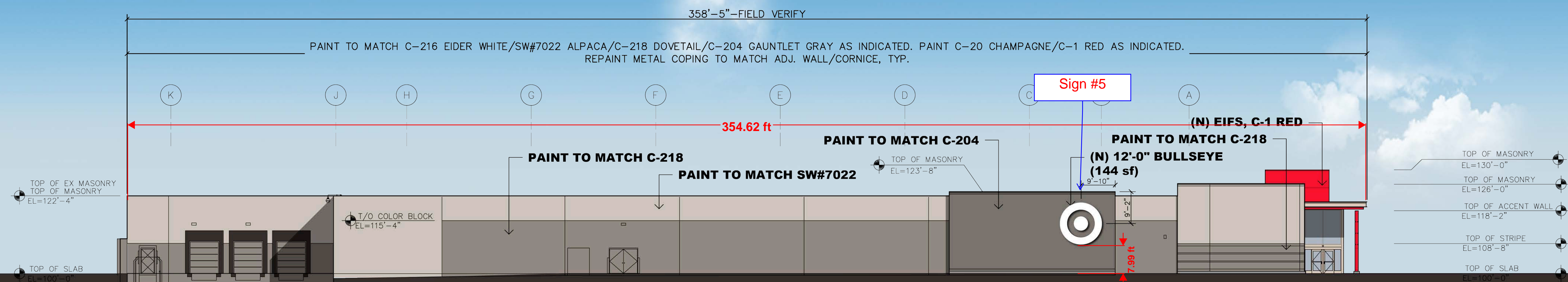
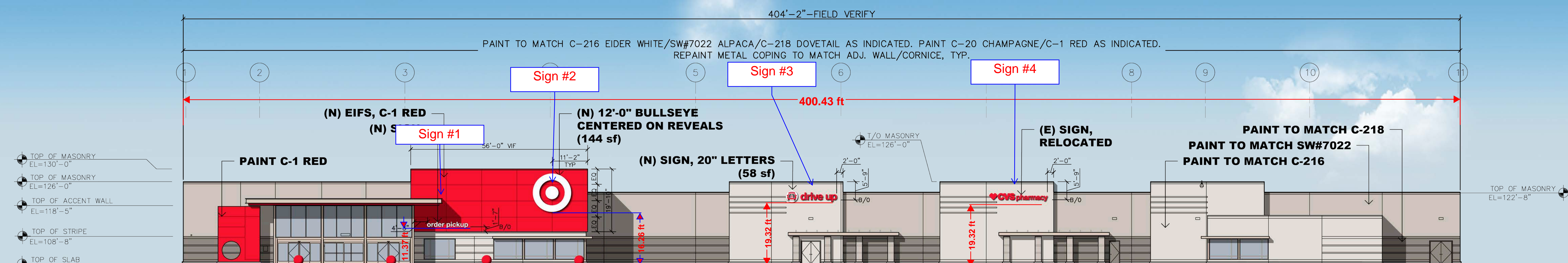
2140 S Pokegama Avenue  
Grand Rapids, Minnesota, USA  
55744









**SIGN LOCATIONS**

NTS





**COLOR KEY:**

	C-216 (SW#7014) EIDER WHITE
	(SW#7022) ALPACA
	C-218 (SW#7018) DOVETAIL GRAY
	C-204 (SW#7019) GAUNTLET GRAY
	C-1 RED
	C-20 CHAMPAGNE
	REPAINT (E) SOFFIT C-1 RED

**NOTE:**

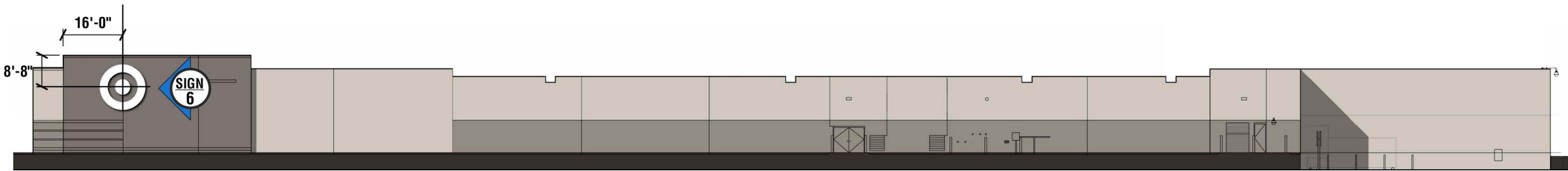
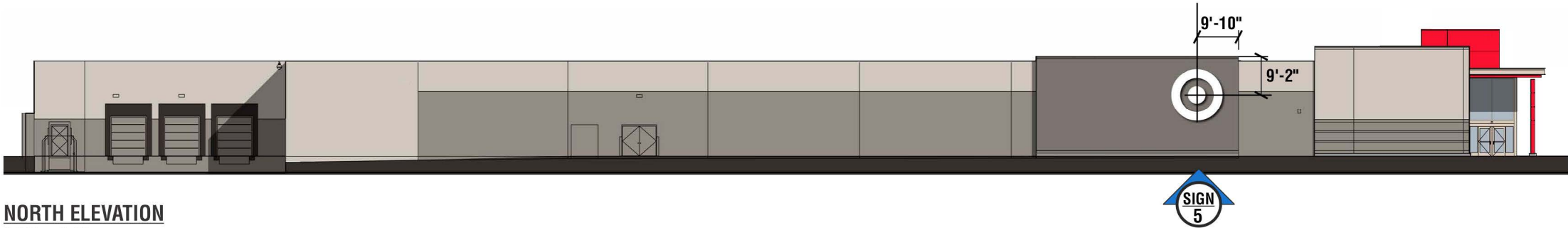
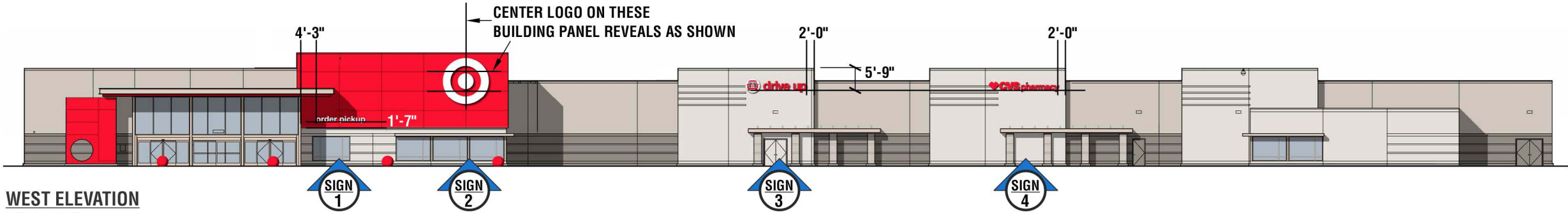
- \*EXISTING FINISHES SHOWN FOR REFERENCE.
- \* EXISTING PREFINISHED METAL AREAS-NO PAINT; PAINT HM DOOR AND FRAME TO MATCH ADJ. WALL, TYP.
- \*STORE EXTERIOR WALLS ARE PRIMARILY CMU.
- \*EXISTING SPHERICAL BOLLARDS REPAINT C-1 RED U.N.O.
- \*BEN-2 : MODERN, COLOR.....SILVER

### GENERAL NOTE

- \* AREA TO BE PAINTED STARTS AT TOP OF CURB OR REVEAL AND CONTINUES TO TOP OF PARAPET/FLASHING OR REVEAL. PAINT COLOR AND FINISH TRANSITIONS OCCUR AT EXISTING VERTICAL CONTROL JOINTS OR AT INSIDE BUILDING CORNERS, U.N.O.
- \* ALL EXISTING WALL-MOUNTED ITEMS TO BE PAINTED TO MATCH ADJ. WALL SURFACE, U.N.O.
- \* PATCH ALL VISIBLE HOLES FROM MOUNTING OF REMOVED SIGNS WITH LIKE MATERIALS. RESTORE WALL SURFACE TO 'LIKE NEW' APPEARANCE.











**INSTALLATION NOTE:**

**PRIOR TO SIGNAGE INSTALLATION ENSURE PANEL JOINT LOCATIONS ARE AS SHOWN AND CONFIRM LOCATIONS OF SIGNS WITH DPA AND RSP PA IF NOT THE SAME**

-  Preliminary Artwork
-  Approved for Production

Project ID: 00000



**PRIDE SIGNS**

THIS ARTWORK IS THE PROPERTY OF PRIDE SIGNS LTD. AND MAY NOT BE USED IN WHOLE OR IN PART WITHOUT WRITTEN CONSENT FROM PRIDE SIGNS LTD. © 2025  
255 PINEBUSH ROAD CAMBRIDGE ONTARIO CANADA TEL: 519.622.4040 FAX: 519.622.4031 WWW.PRIDESIGNS.COM



INTERNATIONAL  
SIGN ASSOCIATION



2140 S Pokegama Avenue  
Grand Rapids, Minnesota, USA



**DRAWN BY:** T. Dodge  
**DATE:** September 11, 2025

Graphic rendition is representative of specific signage. Colour / dimensional / material details should be verified using reference drawing specifications. Pride Signs Ltd. is not responsible for inherent variations caused by display and / or print variations.

Illuminated Channel Letters ( 1 Required )

Scale: 1/2" = 1'-0"



Drawing No.  
**TARG-CL023x0154.120B**

Electrical Requirements

120v 277v 347v

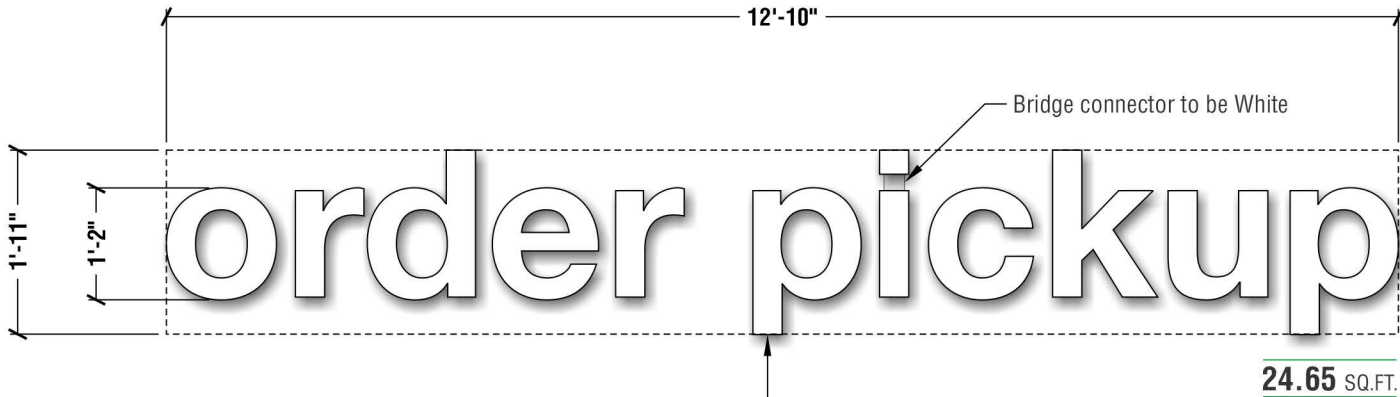
CHANNEL LETTERS

PL: 19.56m PA: .75m<sup>2</sup>

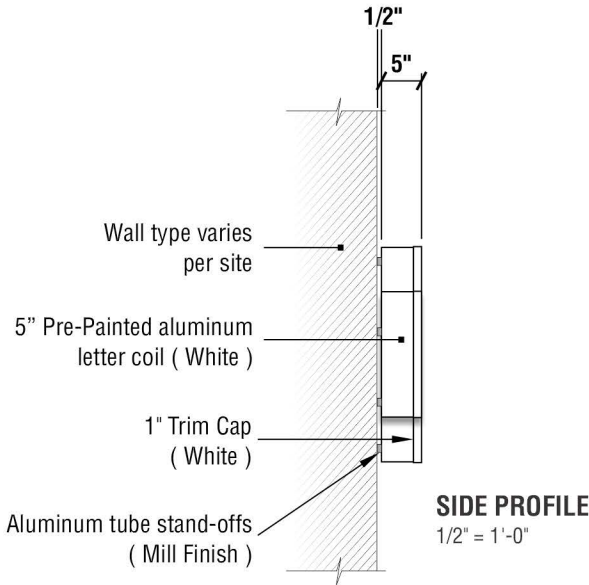
CUT FILE #

TARG-CL023x0154.120A

Sign #1  
Sign Area  
24.65 sq ft



- White pre-finished aluminum letter coil returns
- White 7328 acrylic faces with 1" White trim cap
- White LED illumination



Preliminary Artwork  
Approved for Production  
July 27, 2020 T. Dodge



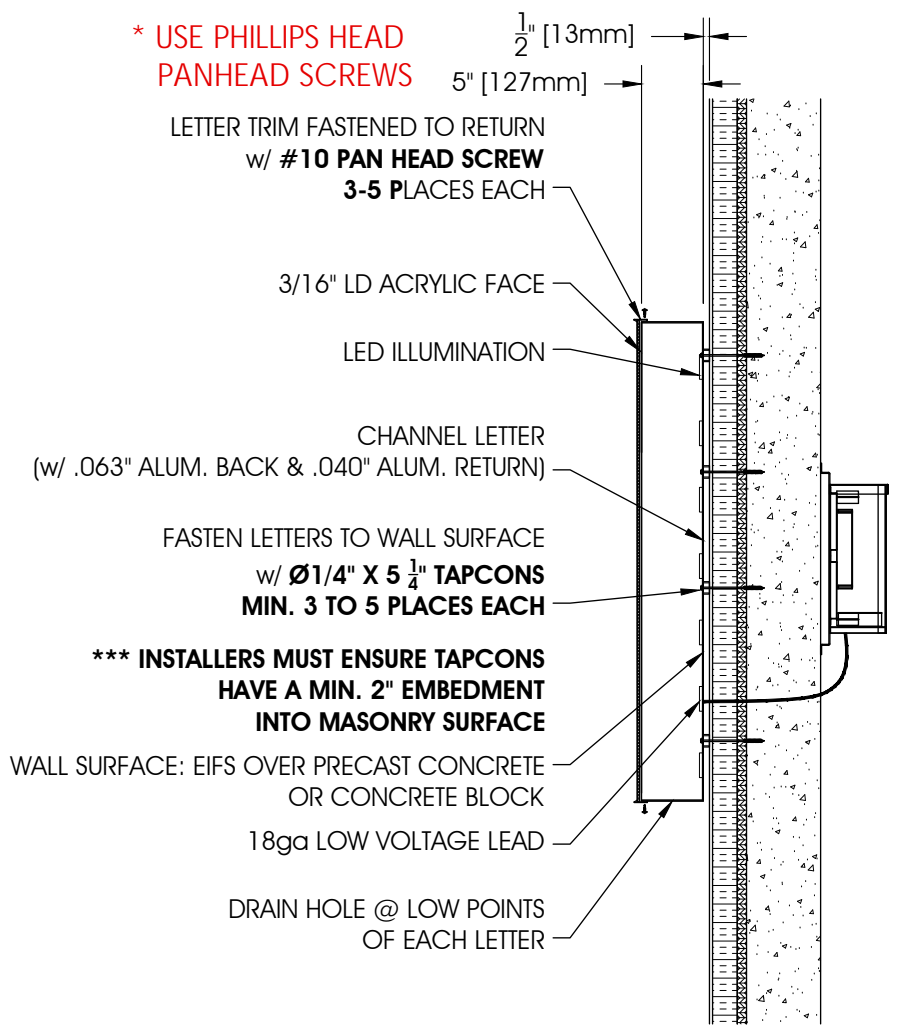
**PRIDE SIGNS**

THIS ARTWORK IS THE PROPERTY OF PRIDE SIGNS LTD. AND MAY NOT BE USED IN WHOLE OR IN PART WITHOUT WRITTEN CONSENT FROM PRIDE SIGNS LTD. © 2023  
255 PINEBUSH ROAD CAMBRIDGE ONTARIO CANADA TEL: 519.622.4040 FAX: 519.622.4031 WWW.PRIDESIGNS.COM

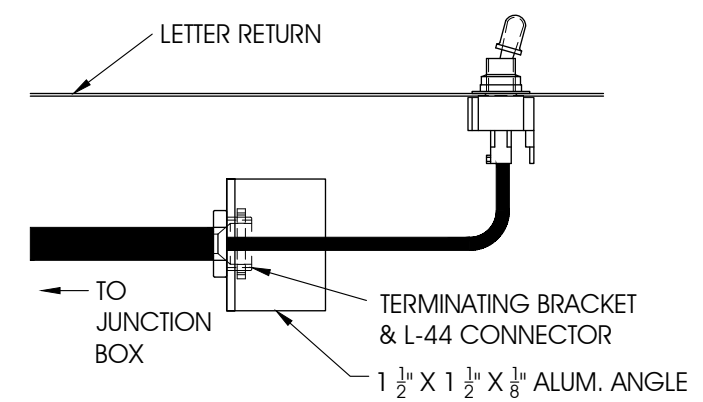
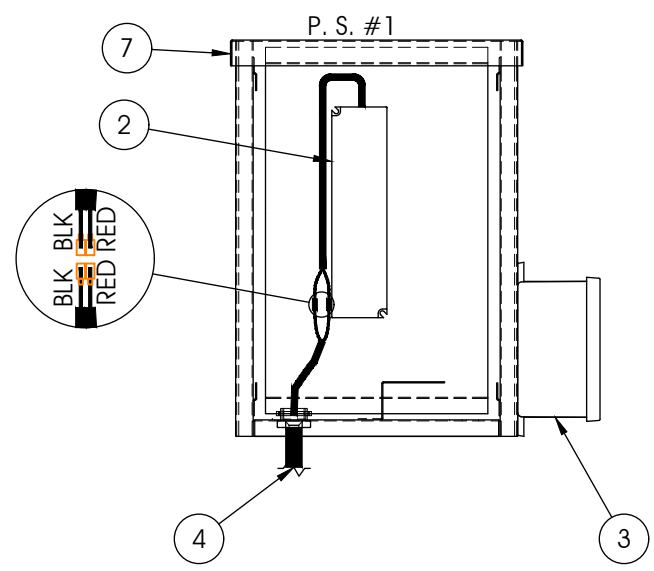


DRAWN BY: T. Dodge  
DATE: July 27, 2020

Graphic rendition is representative of specific signage. Colour / dimensional / material details should be verified using reference drawing specifications. Pride Signs Ltd. is not responsible for inherent variations caused by display and/or print variations.



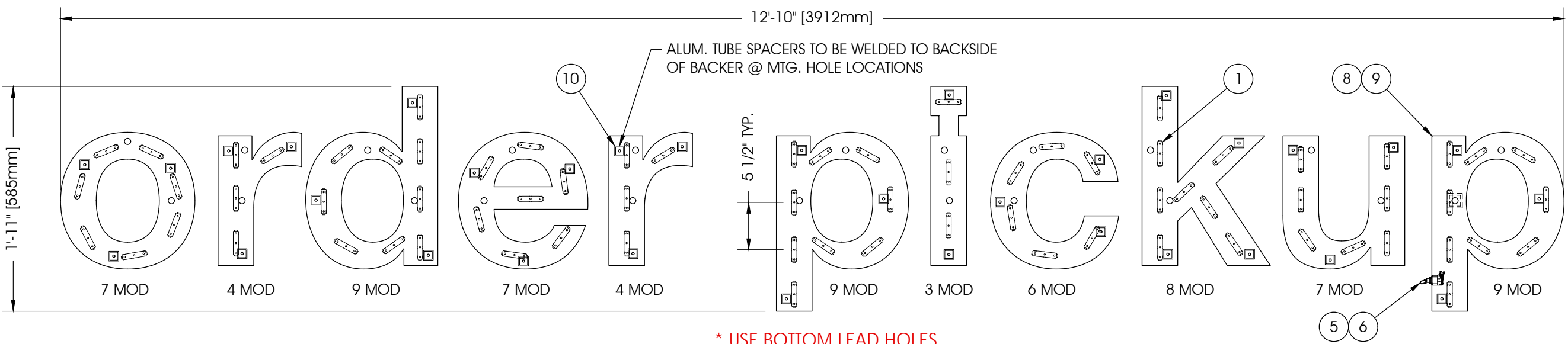
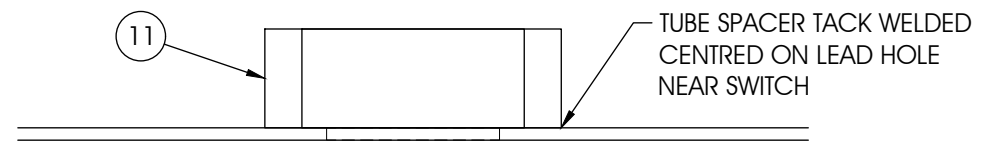
LETTER INSTALLATION INSTRUCTIONS



SWITCH CONNECTION

DESIGN NOTES:  
LOADS AS PER ASCE 7-22  
Grand Rapids, MN AREA:  
RISK CATEGORY II BUILDINGS AND STRUCTURES  
EXPOSURE B: 107MPH

GENERAL WELD NOTE:  
1/8" FILLET WELD REQ'D UNLESS NOTED



\* USE BOTTOM LEAD HOLES

BILL OF MATERIALS			
REF#	DESCRIPTION	QTY	LENGTH
1	GOQ-3 LED (WHITE)	73	
2	60W-12V POWER SUPPLY	1	
3	W.T. JUNCTION BOX w/ COVER (EL077)	1	
4	18ga. L. V. WIRE w/ 2' GTO COVER	11	10'-0"
5	3/8" HOLOFLEX w/ BLACK/RED WIRE	1	10'-0"
6	TOGGLE SWITCH w/ BOOT (EL018A)	1	
7	POWER SUPPLY ENCLOSURE BOX	1	
8	.063" ALUMINUM ROUTED BACK	11	
9	.040" X 5" ALUM. RETURN	1	79'-0"
10	1" X 1" X .095" ALUM. TUBE	33	1/2"
11	1 1/2" X 1 1/2" X .3/16" ALUM. TUBE	1	1/2"

Electrical Requirements

120v 277v 347v

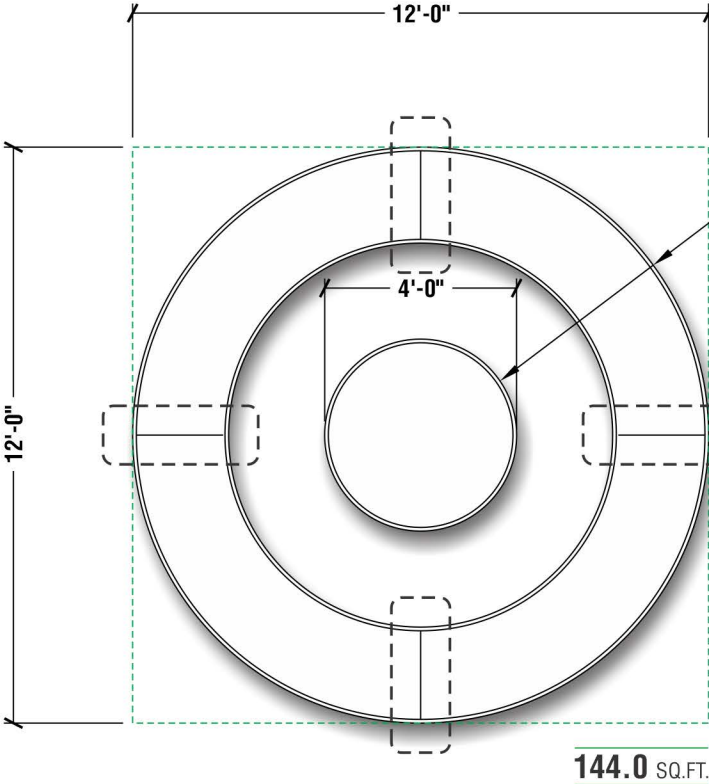
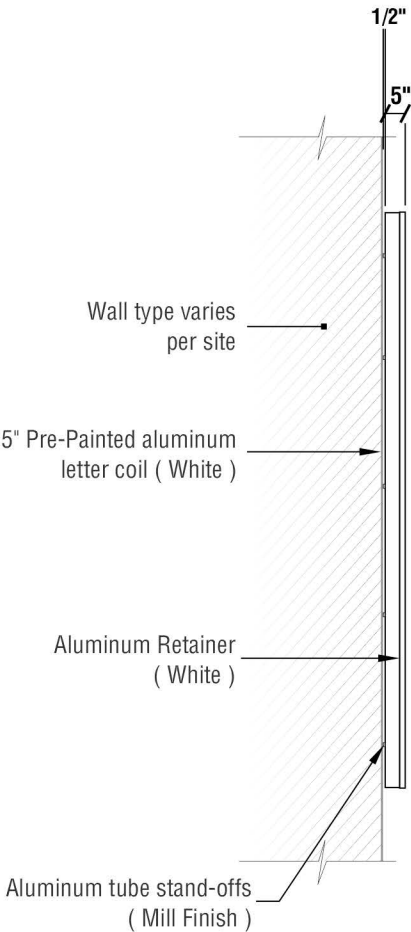
CHANNEL LETTERS

PL: 23.0m PA: 7.0m²

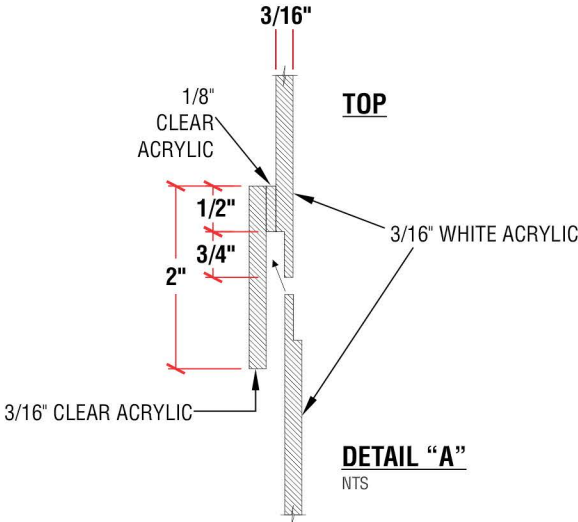
CUT FILE #

TARG-CL144x0144.120A

Sign #2.  
Sign #5 &  
Sign #6  
Sign Area  
144 sq ft  
each



- Pre finished White 5" aluminum letter coil returns
- 3/16" White 7328 acrylic faces
- 1" Pre-Painted White Aluminum retainer
- White LED illumination



Preliminary Artwork

Approved for Production

July 20, 2020

T. Dodge



PRIDE SIGNS®

THIS ARTWORK IS THE PROPERTY OF PRIDE SIGNS LTD. AND MAY NOT BE USED IN WHOLE OR IN PART WITHOUT WRITTEN CONSENT FROM PRIDE SIGNS LTD. © 2023

255 PINEBUSH ROAD CAMBRIDGE ONTARIO CANADA TEL: 519.622.4040 FAX: 519.622.4031 WWW.PRIDESIGNS.COM



DRAWN BY: T. Dodge  
DATE: July 20, 2020

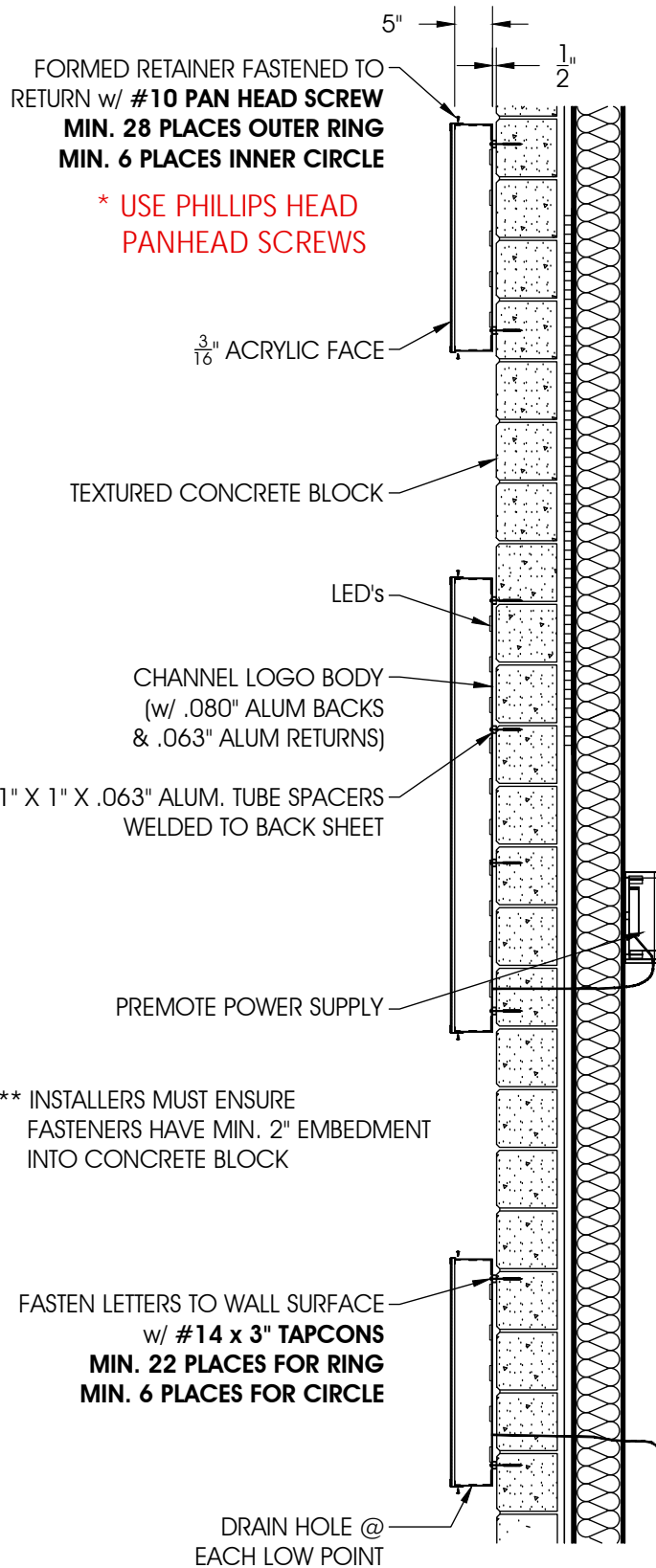
Graphic rendition is representative of specific signage. Colour / dimensional / material details should be verified using reference drawing specifications. Pride Signs Ltd. is not responsible for inherent variations caused by display and/or print variations.



INSTALLATION INSTRUCTIONS

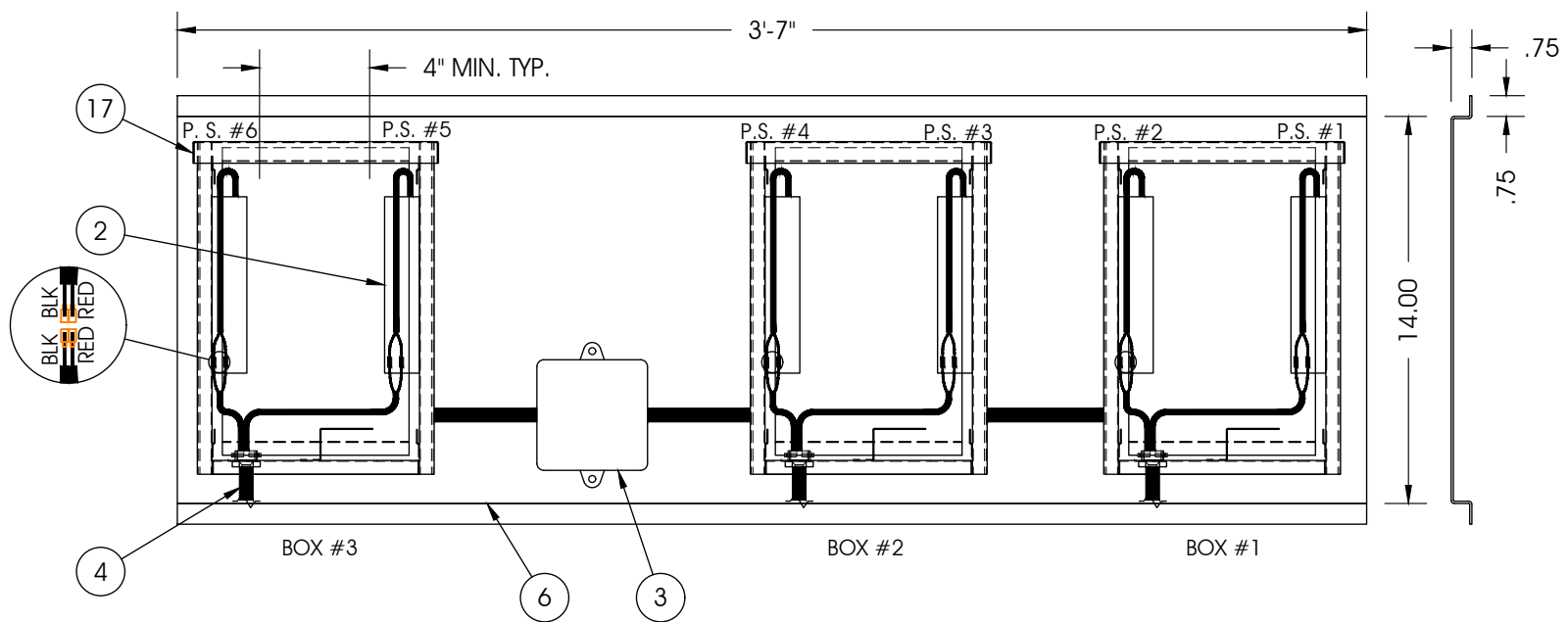
BILL OF MATERIALS

REF#	DESCRIPTION	QTY	LENGTH
1	GOQ-3 LED (WHITE)	424	
2	60W-12V POWER SUPPLY	6	
3	W.T. JUNCTION BOX w/ COVER -EL077	1	
4	18ga L.V. LEAD w/ 2' GTO COVER	6	16'-0"
5	.080" ROUTED ALUM. BACK SHEET	5	
6	.080" ALUMINUM FORMED TRAY	1	3'-7"
7	.063" x 5.3" ALUM. COIL	1	83'-0"
8	.063" FM'D ALUM RETAINER - ROLLED	4	12'-0"
9	.063" FM'D ALUM RETAINER - ROLLED - R	3	12'-0"
10	.063" FM'D ALUM RETAINER - ROLLED	2	12'-0"
11	.063" FORMED ALUM COIL (x 1 1/4")	8	10'-0"
12	.063" X 5" ALUMINUM SEAM COVER	4	5"
13	2" x 3" x 3/16" ALUM. ANGLE	20	1 1/2"
14	1" x 2" x 1/8" ALUM. ANGLE	4	1'-11"
15	1" x 1" x .063" ALUM. TUBE	28	1/2"
16	3/8" LIFTING BOLT	2	
17	ELECTRICAL ENLOSURE	3	
18	TOGGLE SWITCH w/ BOOT (EL018A)	1	
19	3/8" HOLOFLEX w/ BLACK/RED WIRE	1	12'-0"
20	.125" ALUM. SEAM COVER X 8" (TTS)	2	2'-0"
21	1 1/2" X 1 1/2" x 3/16" ALUM. TUBE	1	1/2"



\* NORTH & SOUTH ELEVATIONS

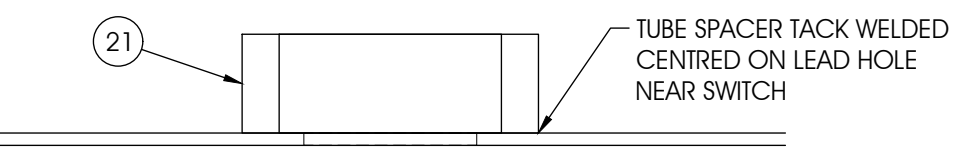
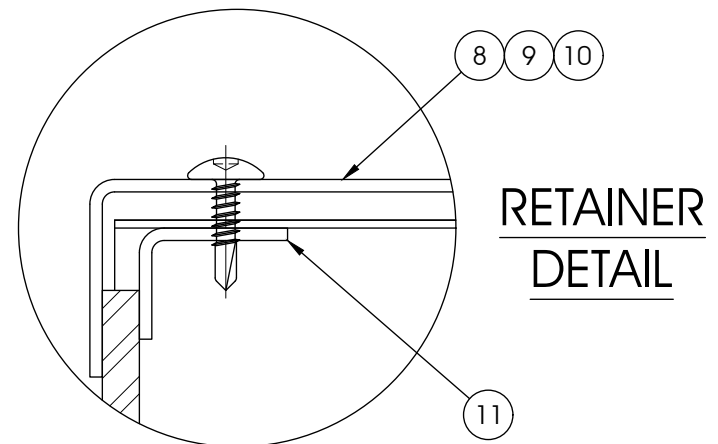
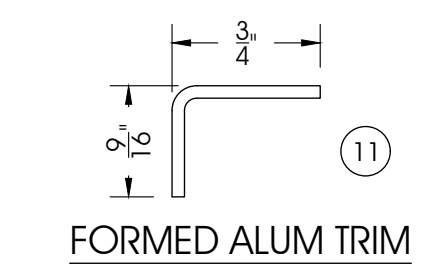
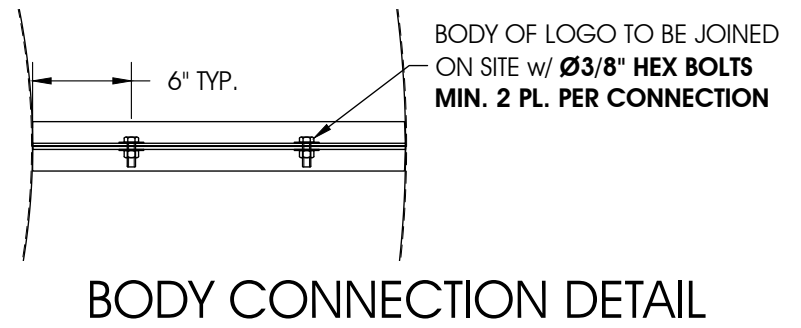
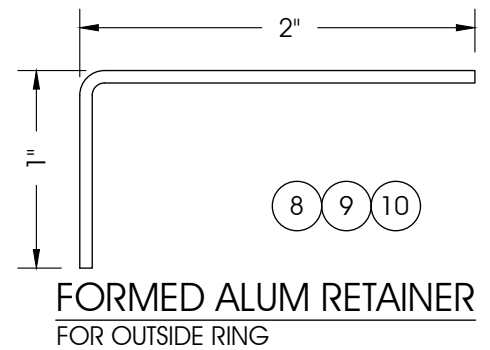
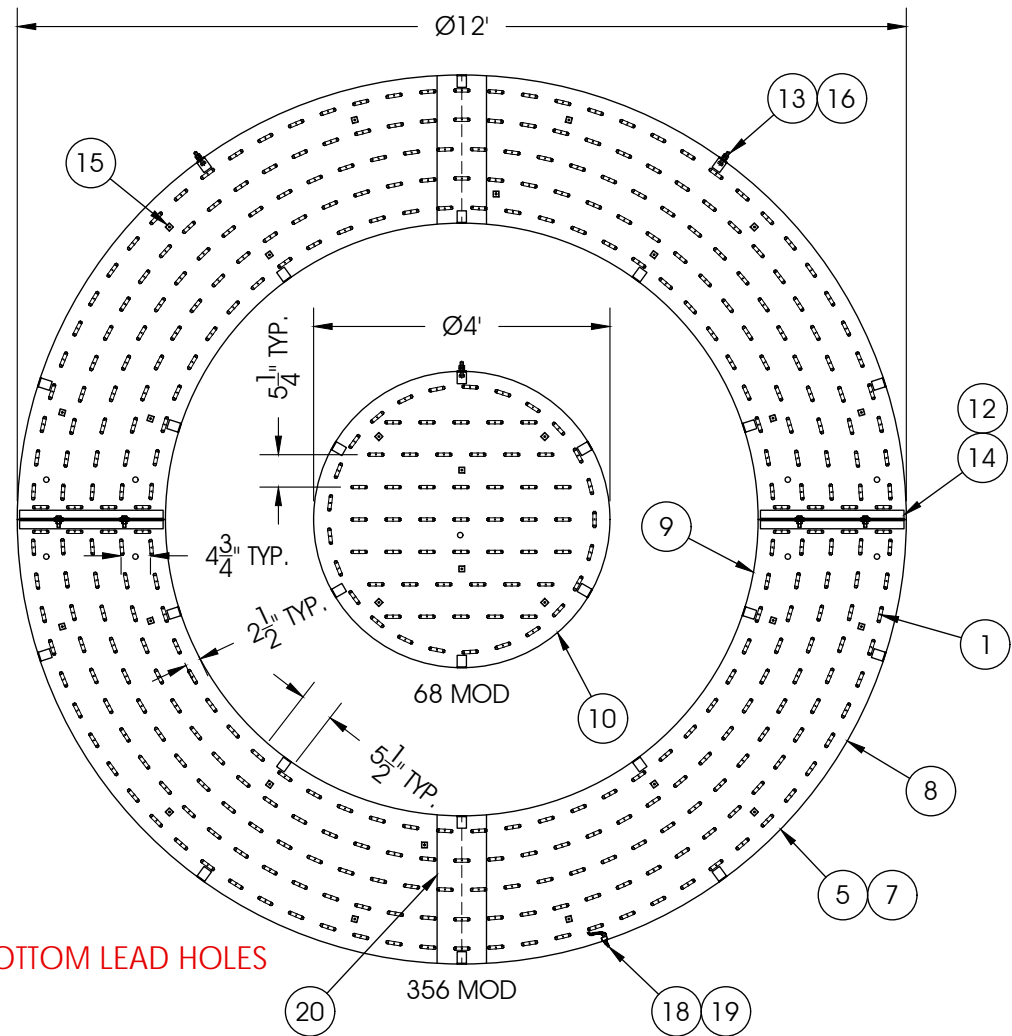
INSTALLATION DETAIL



DESIGN NOTES:  
LOADS AS PER ASCE 7-22  
Grand Rapids, MN AREA:  
RISK CATEGORY II BUILDINGS AND STRUCTURES  
EXPOSURE B: 107MPH

GENERAL WELD NOTE:  
1/8" FILLET WELD REQ'D UNLESS NOTED

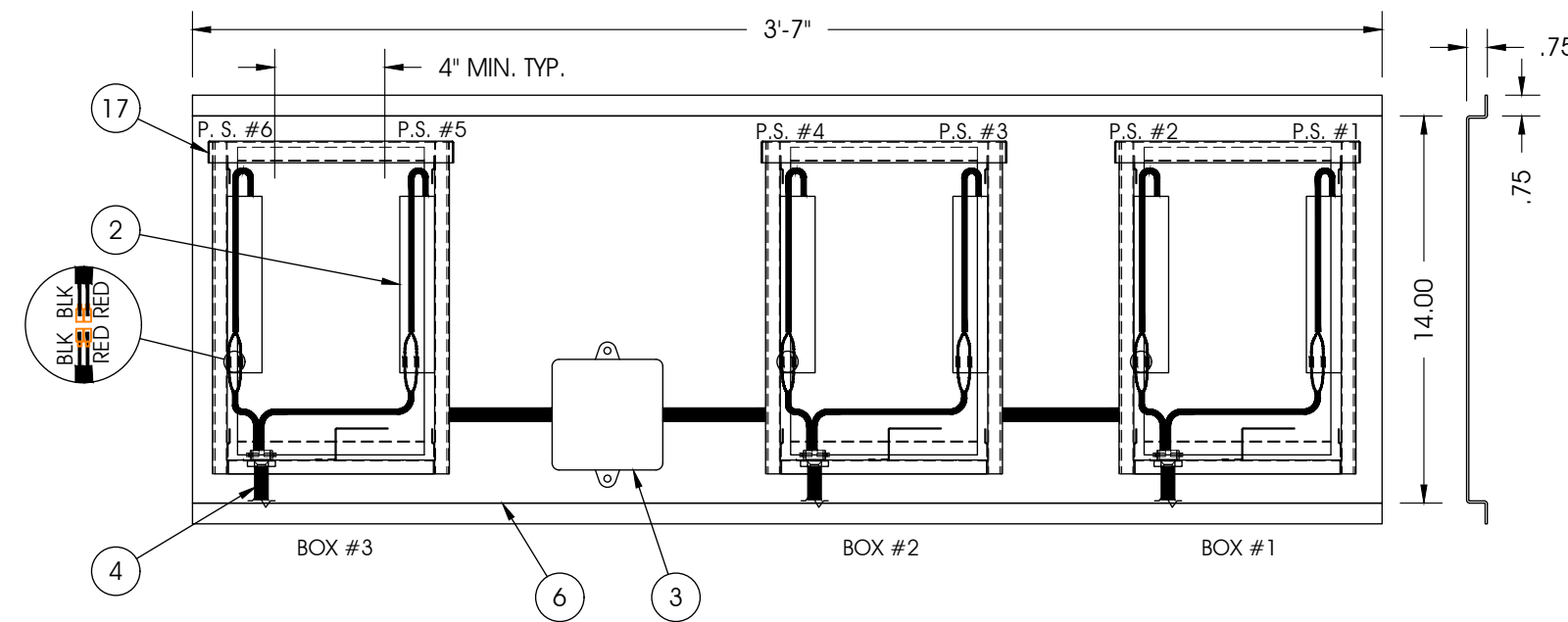
ENCLOSURE BOX ASS'Y



INSTALLATION INSTRUCTIONS

BILL OF MATERIALS

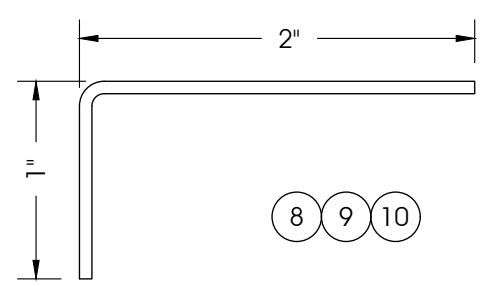
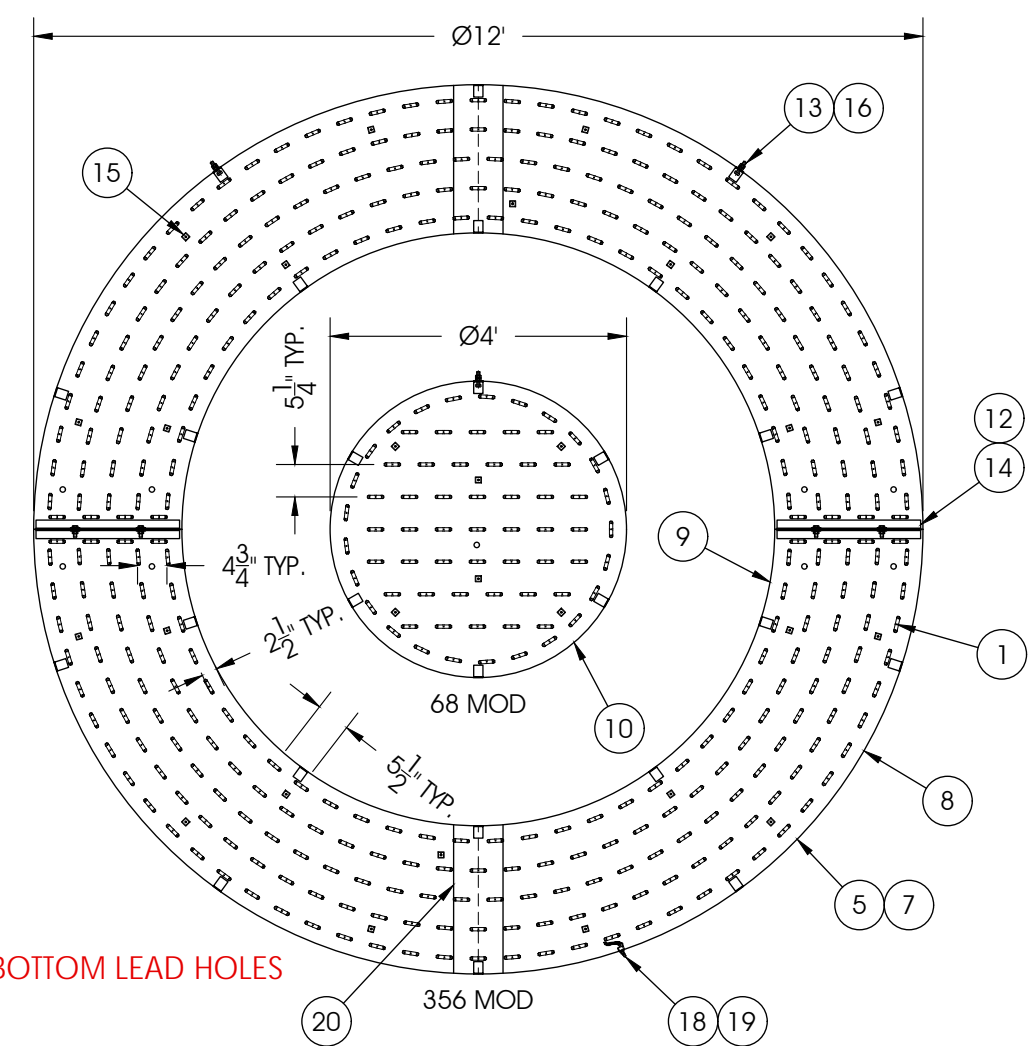
REF#	DESCRIPTION	QTY	LENGTH
1	GOQ-3 LED (WHITE)	424	
2	60W-12V POWER SUPPLY	6	
3	W.T. JUNCTION BOX w/ COVER -EL077	1	
4	18ga L.V. LEAD w/ 2' GTO COVER	6	16'-0"
5	.080" ROUTED ALUM. BACK SHEET	5	
6	.080" ALUMINUM FORMED TRAY	1	3'-7"
7	.063" x 5.3" ALUM. COIL	1	83'-0"
8	.063" FM'D ALUM RETAINER - ROLLED	4	12'-0"
9	.063" FM'D ALUM RETAINER - ROLLED - R	3	12'-0"
10	.063" FM'D ALUM RETAINER - ROLLED	2	12'-0"
11	.063" FORMED ALUM COIL (x 1 1/4")	8	10'-0"
12	.063" X 5" ALUMINUM SEAM COVER	4	5"
13	2" x 3" x 3/16" ALUM. ANGLE	20	1 1/2"
14	1" x 2" x 1/8" ALUM. ANGLE	4	1'-11"
15	1" x 1" x .063" ALUM. TUBE	28	1/2"
16	3/8" LIFTING BOLT	2	
17	ELECTRICAL ENLOSURE	3	
18	TOGGLE SWITCH w/ BOOT (EL018A)	1	
19	3/8" HOLOFLEX w/ BLACK/RED WIRE	1	12'-0"
20	.125" ALUM. SEAM COVER X 8" (TTS)	2	2'-0"
21	1 1/2" X 1 1/2" x 3/16" ALUM. TUBE	1	1/2"



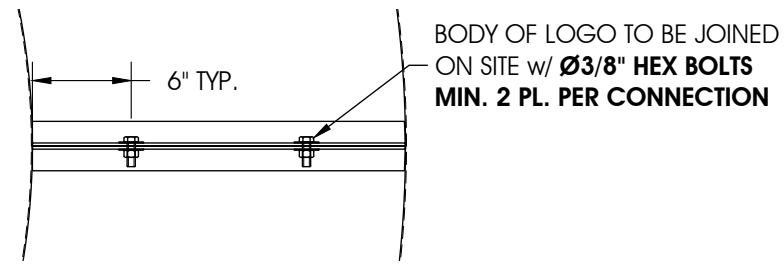
ENCLOSURE BOX ASS'Y

DESIGN NOTES:  
LOADS AS PER ASCE 7-22  
Grand Rapids, MN AREA:  
RISK CATEGORY II BUILDINGS AND STRUCTURES  
EXPOSURE B: 107MPH

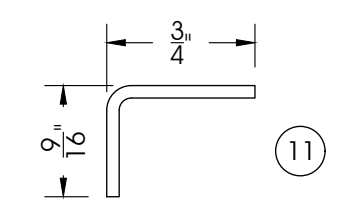
GENERAL WELD NOTE:  
1/8" FILLET WELD REQ'D UNLESS NOTED



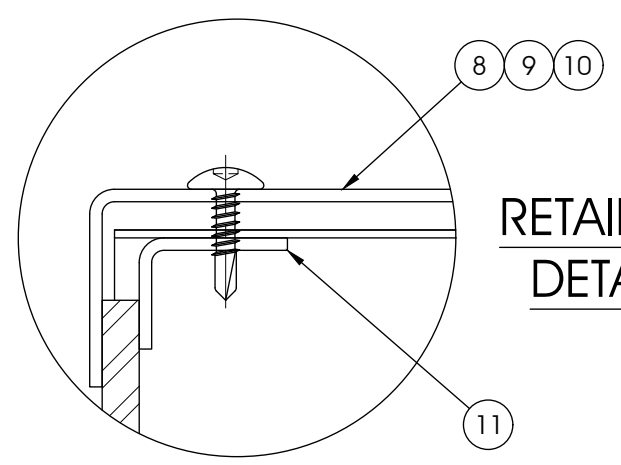
FORMED ALUM RETAINER FOR OUTSIDE RING



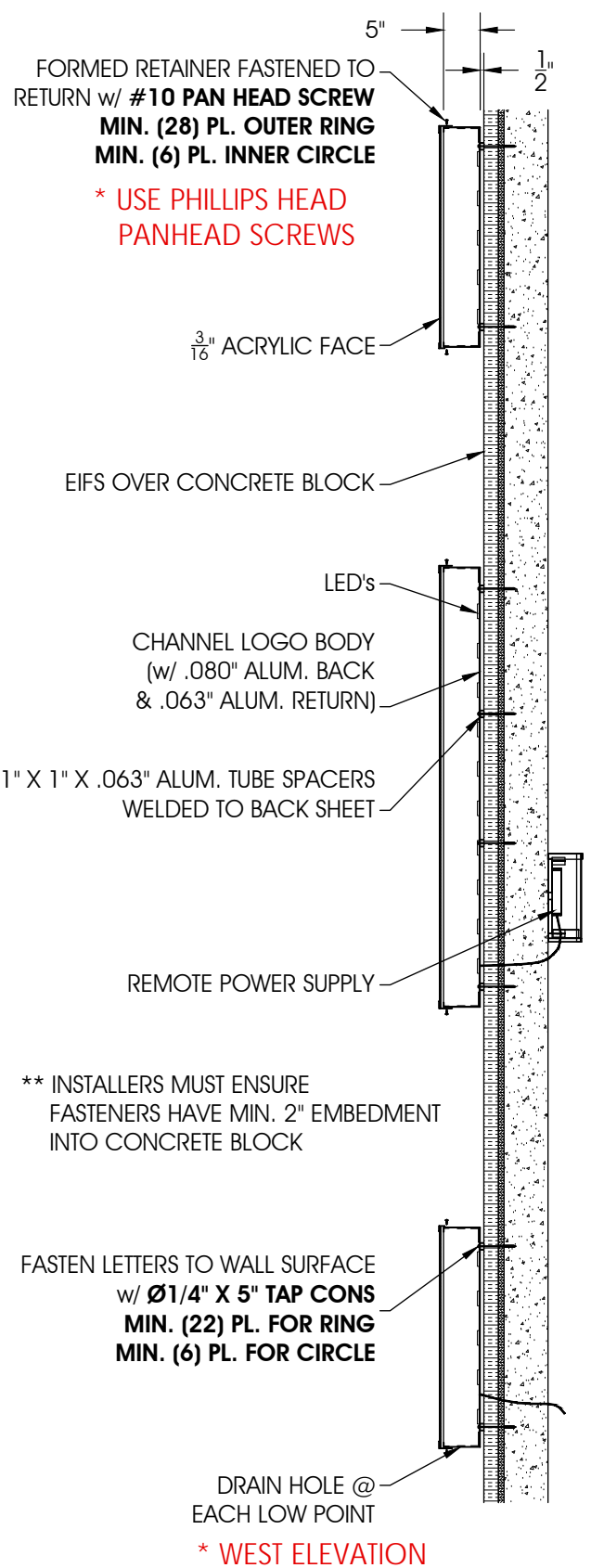
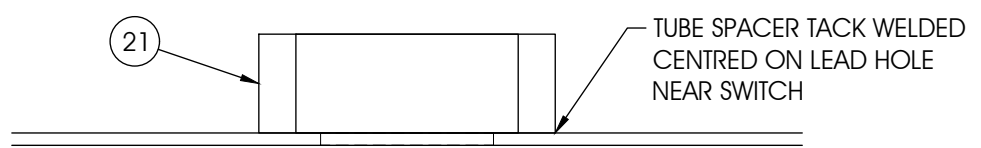
BODY CONNECTION DETAIL



FORMED ALUM TRIM

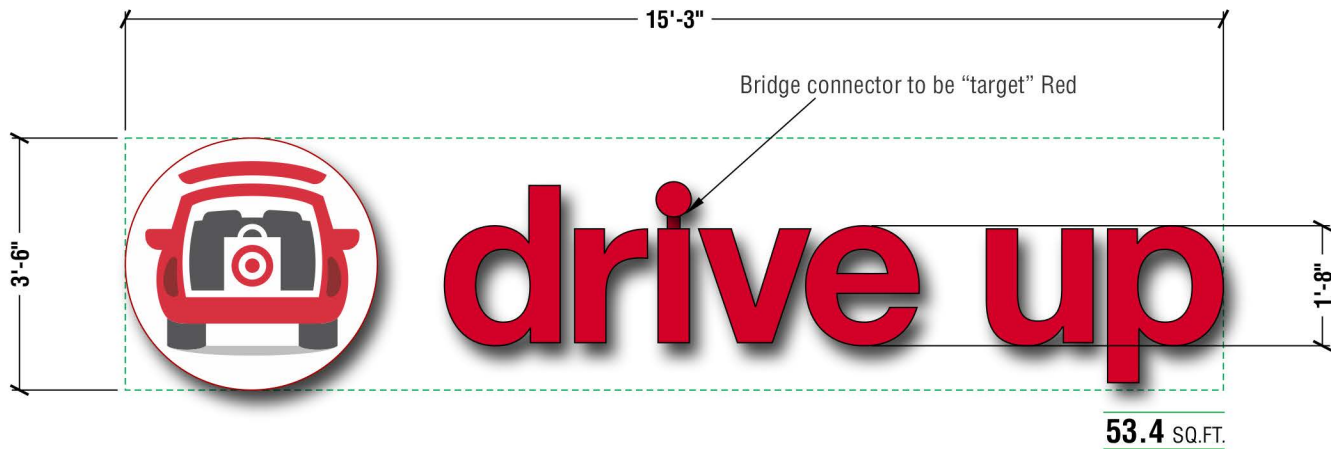


RETAINER DETAIL



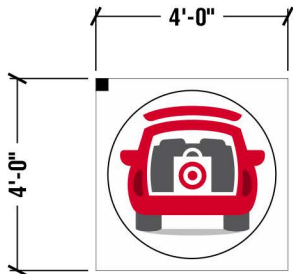
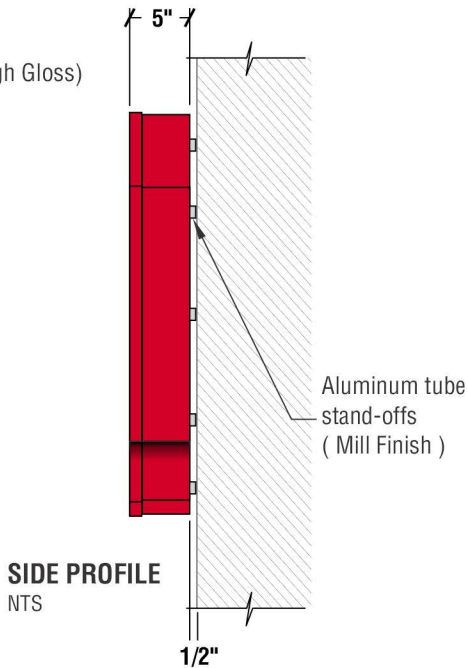
INSTALLATION DETAIL





Material Specifications

- "target" Red ( Pre- Finished ) aluminum letter coil returns
- Logo to have 3/16" White acrylic faces c/w Red "F" trim painted Pre-Mix "target" Red (High Gloss)
- Letters to have 3/16" Red #2793 acrylic faces c/w 1" Red #2793 trim cap
- Graphics to be a digitally printed direct to substrate
- White LED illumination for Logo / Red for Letters



Digital Layout

1/4" = 1'-0"

efi	File Name : TARG-DG042x0042.000A
3/16" WHITE ACRYLIC / 1ST SURFACE / TRANSLUCENT	
OPTICALLY CLEAR OVER LAMINATE	

Sign #3  
Sign Area  
53.4sq ft

Preliminary Artwork  
Approved for Production  
September 16, 2025 T. Dodge



PRIDE SIGNS

THIS ARTWORK IS THE PROPERTY OF PRIDE SIGNS LTD. AND MAY NOT BE USED IN WHOLE OR IN PART WITHOUT WRITTEN CONSENT FROM PRIDE SIGNS LTD. © 2025  
255 PINEBUSH ROAD CAMBRIDGE ONTARIO CANADA TEL: 519.622.4040 FAX: 519.622.4031 WWW.PRIDESIGNS.COM



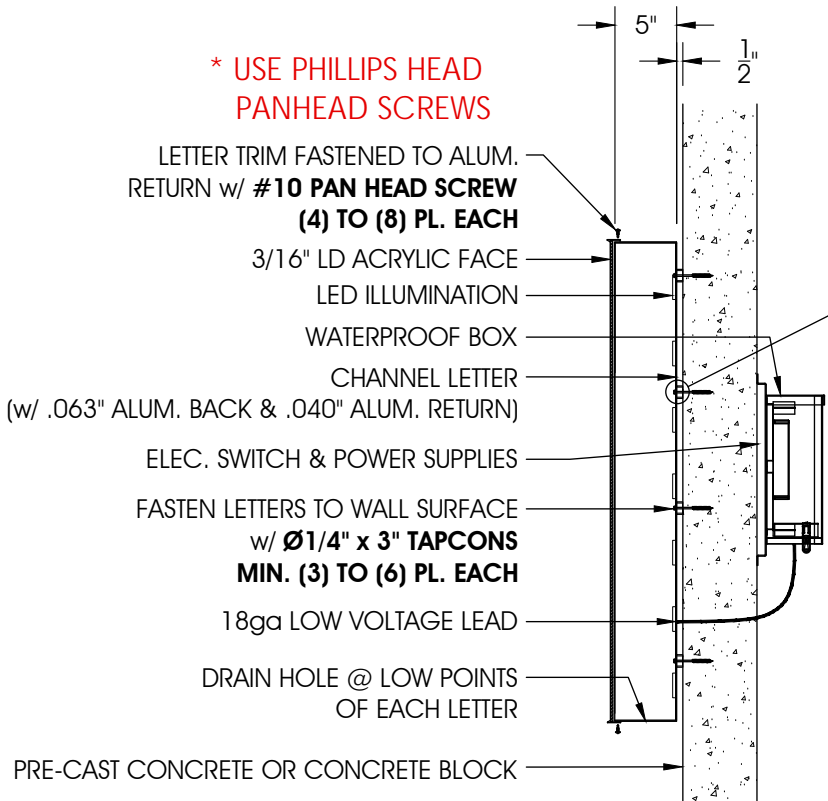
DRAWN BY: T. Dodge  
DATE: September 16, 2025

Graphic rendition is representative of specific signage. Colour / dimensional / material details should be verified using reference drawing specifications. Pride Signs Ltd. is not responsible for inherent variations caused by display and/or print variations.

BILL OF MATERIALS

REF#	DESCRIPTION	QTY	LENGTH
1	GOQ-3 LED (WHITE)	56	
2	GOQ-3 LED (RED)	65	
3	60W-12V POWER SUPPLY	2	
4	W. T. JUNCTION BOX w/ COVER (EL077A)	1	
5	18GA L. V. WIRE w/ 2' GTO COVER	8	20'-0"
6	3/8" HOLOFLEX w/ BLACK/RED WIRE	1	20'-0"
7	TOGGLE SWITCH w/ BOOT (EL018A)	1	
8	ELECTRICAL ENCLOSURE	1	
9	.063" ALUM. ROUTED BACK	8	
10	.040" ALUM. X 5" RETURN	1	93'-0"
11	1" x 1" x .063" ALUM TUBE	35	1/2"
12	1 1/2" X 1 1/2" X 3/16" ALUM. TUBE	1	1/2"

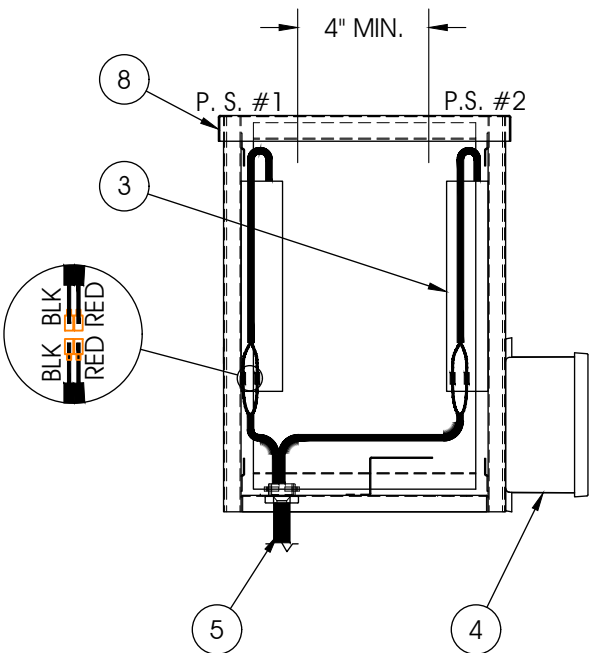
\*\*\* LOGO REQUIRES "F" TRIM



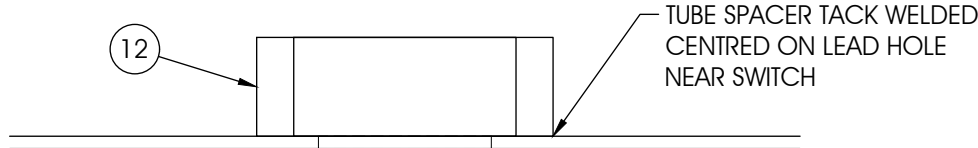
SPACER DETAIL

\*\*\* INSTALLERS MUST ENSURE TAPCONS HAVE A MIN. 2" EMBEDMENT INTO MASONRY SURFACE

.063" ALUM TUBE TO BE WELDED TO BACKER @ EACH MTG. HOLE LOCATION



ENCLOSURE BOX ASS'Y



INSTALLATION INSTRUCTIONS

\*\*\* LOGO REQUIRES "F" TRIM

DESIGN NOTES:

LOADS AS PER ASCE 7-22

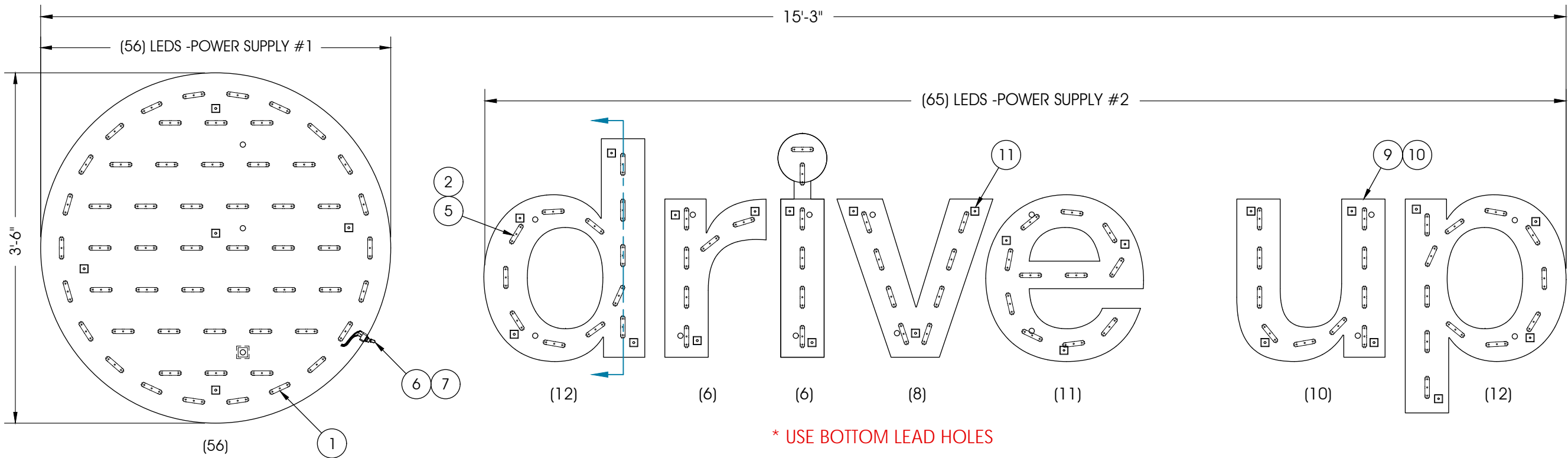
Grand Rapids, MN AREA:

RISK CATEGORY II BUILDINGS AND STRUCTURES

EXPOSURE B: 107MPH

GENERAL WELD NOTE:

1/8" FILLET WELD REQ'D UNLESS NOTED



PRIDE SIGNS

INTERNATIONAL SIGN ASSOCIATION

sac space

UL US

THIS STRUCTURAL DRAWING IS THE PROPERTY OF PRIDE SIGNS LIMITED AND MAY NOT BE USED IN WHOLE OR PART WITHOUT THE WRITTEN CONSENT FROM PRIDE SIGNS LIMITED. © 2023  
255 PINEBUSH ROAD, CAMBRIDGE, ON, CANADA N1T 1B9 - TEL: 519.622.4040 - WWW.PRIDESIGNS.COM

UL FILE # E500193

DRAWN BY: S. POWER

05-Jan-26

CHECKED BY:

CUT FILE:

WEIGHT: 70 LBS.

target

2140 South Pokegama Avenue  
Grand Rapids, MN

ILLUM. CHANNEL LETTERS

00 RELEASED FOR PERMIT

S. POWER 05-Jan-26

UL REQUIREMENTS:

SIGN PROGRAM: SIGN SECTION 02  
# OF SECTIONS 09

AMP DRAW: 2.4 A @ 120V

ENVIRONMENTAL LOCATION: DAMP 01  
DISCONNECT SWITCH: YES 01



Illuminated Channel Letters ( 1 Required )  
Scale: 3/8" = 1'-0"



Drawing No.  
**TARG-CL030x0220.120A**

Electrical Requirements

120v 277v 347v

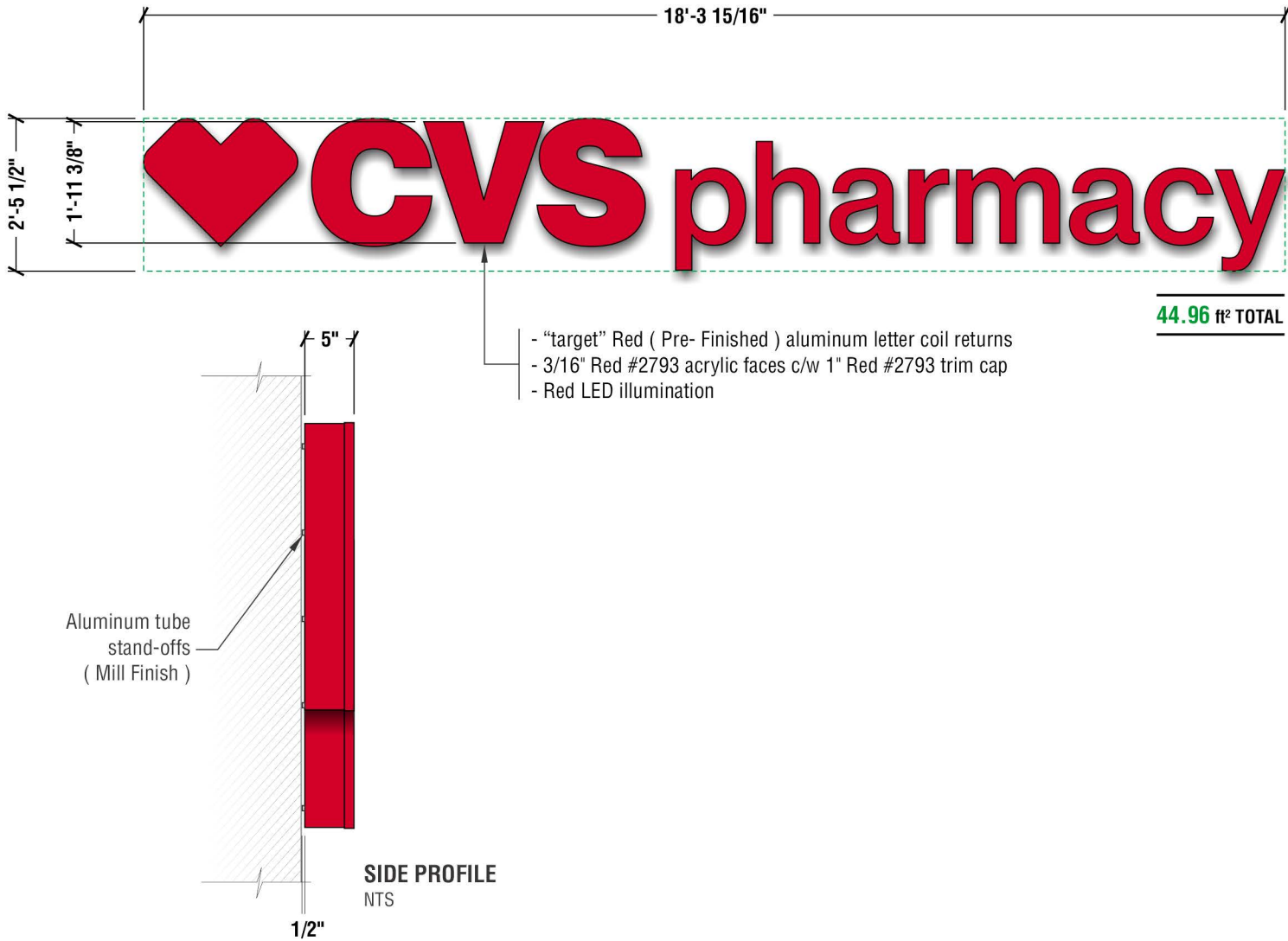
CHANNEL LETTERS

PL: 27.63m PA: 1.5m<sup>2</sup>

CUT FILE #

TARG-CL030x0220.120A

Sign #4  
Sign Area  
44.96 sq ft



☐ Preliminary Artwork  
☒ Approved for Production  
December 11, 2019 T. Dodge



**PRIDE SIGNS**

THIS ARTWORK IS THE PROPERTY OF PRIDE SIGNS LTD. AND MAY NOT BE USED IN WHOLE OR IN PART WITHOUT WRITTEN CONSENT FROM PRIDE SIGNS LTD. © 2023  
255 PINEBUSH ROAD CAMBRIDGE ONTARIO CANADA TEL: 519.622.4040 FAX: 519.622.4031 WWW.PRIDESIGNS.COM

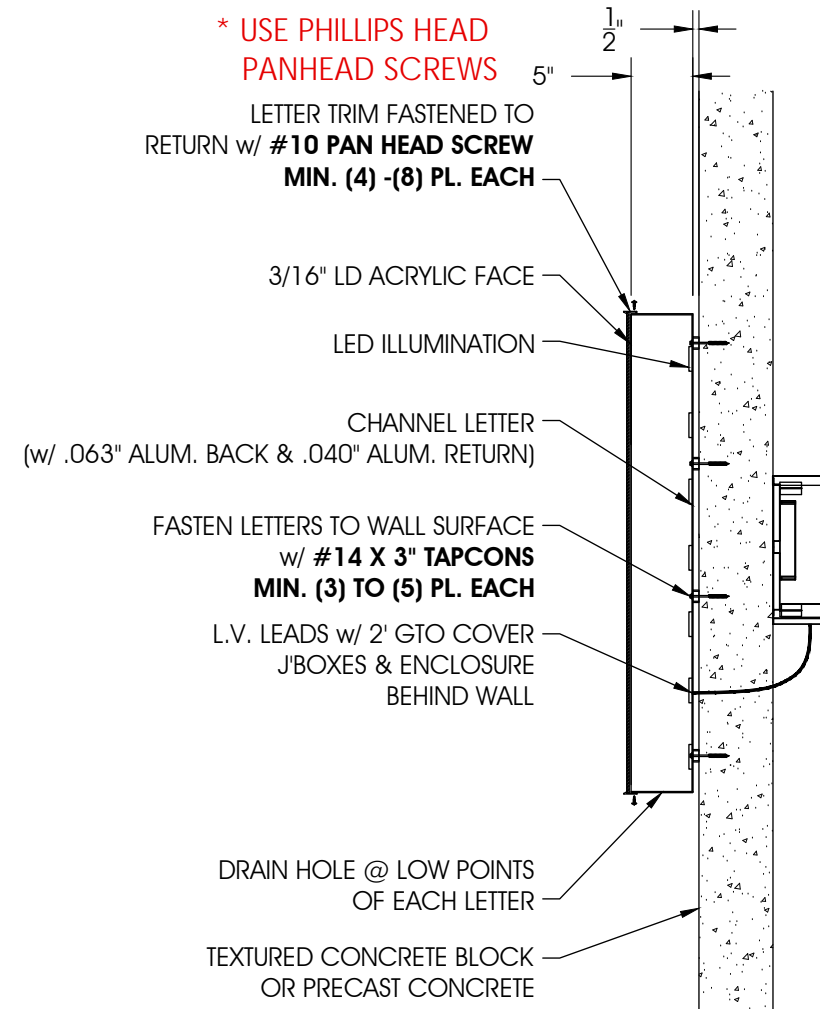
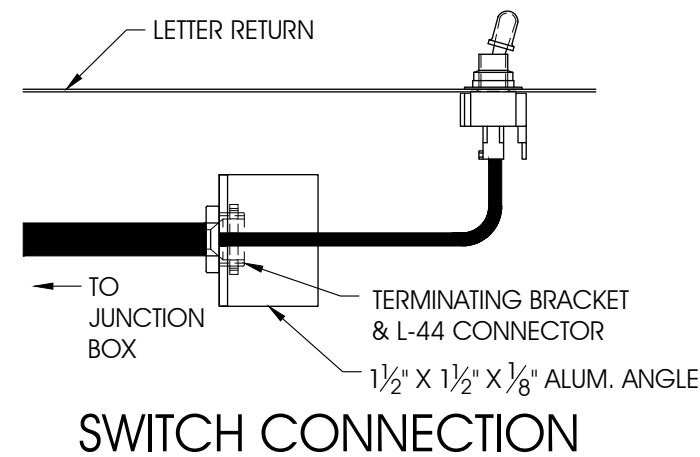
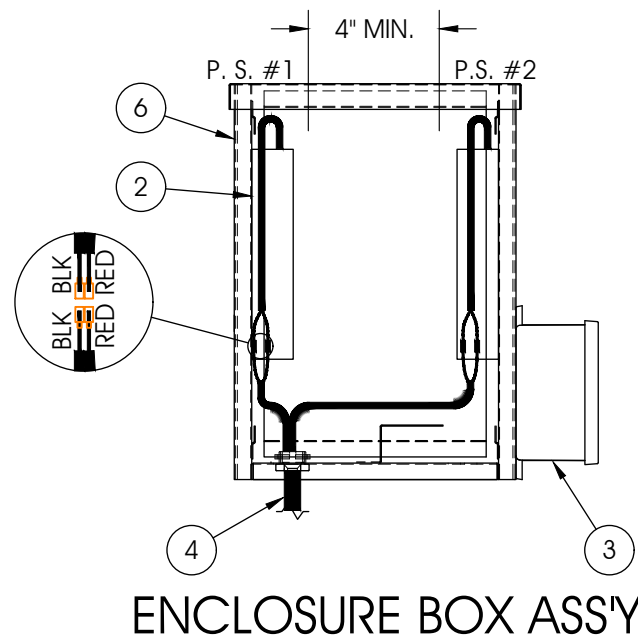


DRAWN BY: T. Dodge  
DATE: December 11, 2019

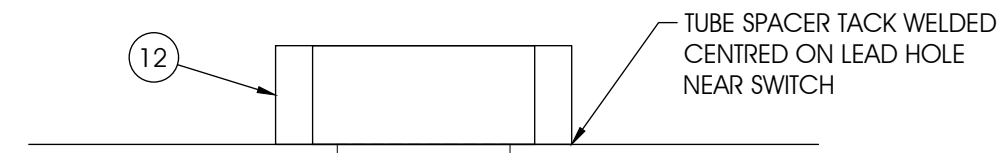
Graphic rendition is representative of specific signage. Colour / dimensional / material details should be verified using reference drawing specifications. Pride Signs Ltd. is not responsible for inherent variations caused by display and/or print variations.

BILL OF MATERIALS

REF#	DESCRIPTION	QTY	LENGTH
1	RED GOQ-3 LED	130	
2	60W-12V LPV-60 POWER SUPPLY	2	
3	W. T. JUNCTION BOX w/ COVER (EL077)	1	EL077
4	18ga L.V. WIRE w/ FULL GTO COVER	2	20'-0"
5	18ga L.V. WIRE w/ GTO (JUMPS)	12	5'-0"
6	ELECTRICAL ENCLOSURE BOX	1	
7	.063" ALUM. ROUTED BACK	12	
8	.040" x 5" ALUM. RETURN	1	105'-0"
9	1" x 1" x .095" ALUM. TUBE	42	1/2"
10	HOLOFLEX w/ BLACK/RED WIRE	1	20'-0"
11	TOGGLE SWITCH w/ BOOT (EL018A)	1	
12	1-1/2" x 1-1/2" x 3/16" ALUM TUBE	1	1/2"

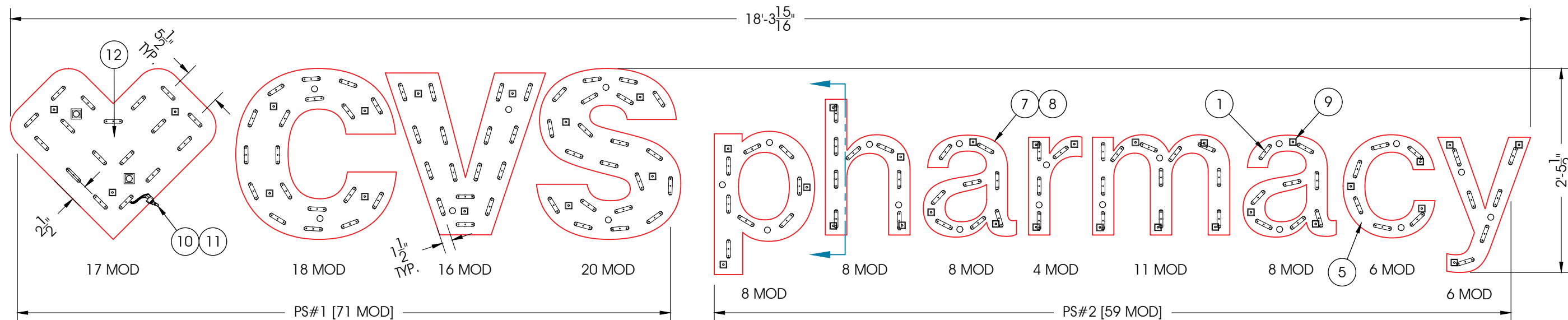


LETTER INSTALLATION INSTRUCTIONS



DESIGN NOTES:  
LOADS AS PER ASCE 7-22  
Grand Rapids, MN AREA:  
RISK CATEGORY II BUILDINGS AND STRUCTURES  
EXPOSURE B: 107MPH

GENERAL WELD NOTE:  
1/8" FILLET WELD REQ'D UNLESS NOTED



\* USE BOTTOM LEAD HOLES



■ Replacement Flex Faces f/ Existing Frames ( 2 Required )

Scale: 1/4" = 1'-0"



Material Specifications

- White flex face with Cardinal Red 3m 3630-53 translucent vinyl applied to 1st surface
- Note:
- New flex face installed onto existing frame ( **On Site** )



**ILLUMINATION NOTE:**  
**TARGET SIGN BOX**  
**RETROFITTED w/ WHITE LED**



Drawing No.  
**TARG-RF000904.000A1**

STRUCTURAL LED RETRO. #  
**TARG-RT000904.120A1**

**Sign #7**  
**Face**  
**Replacements**



**SHERWIN WILLIAMS** **RED FORMULA**  
**PI DTM GL S RED B66R11038**



**SIGN BOX AND FRAMES**  
**TO BE PAINTED RED**  
**ON-SITE.**

**STEEL POSTS TO BE**  
**PAINTED SILVER**  
**ON-SITE**

Preliminary Artwork

Approved for Production



**PRIDE SIGNS**

THIS ARTWORK IS THE PROPERTY OF PRIDE SIGNS LTD. AND MAY NOT BE USED IN WHOLE OR IN PART WITHOUT WRITTEN CONSENT FROM PRIDE SIGNS LTD. © 2025  
255 PINEBUSH ROAD CAMBRIDGE ONTARIO CANADA TEL: 519.622.4040 FAX: 519.622.4031 WWW.PRIDESIGNS.COM



2140 S Pokegama Avenue  
Grand Rapids, Minnesota, USA



**DRAWN BY:** T. Dodge  
**DATE:** September 11, 2025

Graphic rendition is representative of specific signage. Colour / dimensional / material details should be verified using reference drawing specifications. Pride Signs Ltd. is not responsible for inherent variations caused by display and/or print variations.