

**GRAND RAPIDS
PUBLIC UTILITIES**

Service is Our Nature

500 SE Fourth Street • Grand Rapids, Minnesota 55744

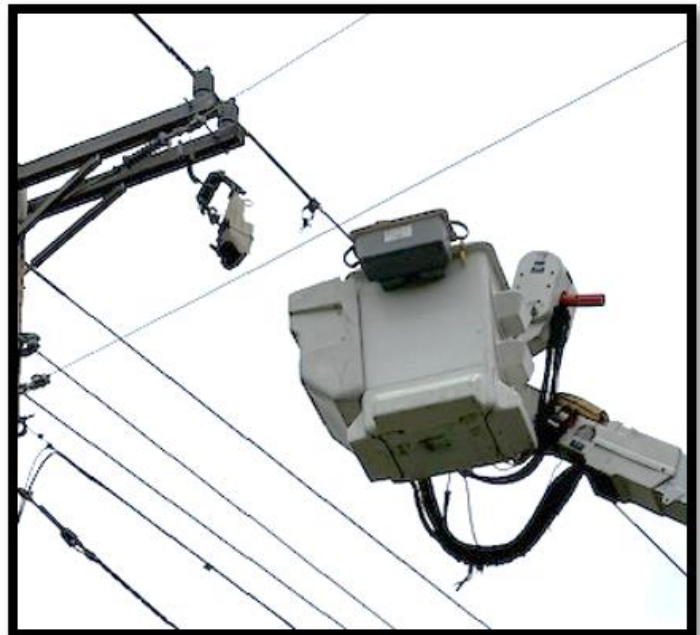
ELECTRIC DEPARTMENT MONTHLY REPORT November 2023 Commission Meeting

Reliability Report Last Month

October was a difficult month. We had three major outages and fifteen minor ones. See the information below:

SAIDI:	0.09	Avg Minutes / Customers Served	CAIDI:	0.29	Avg Minutes / Customer Out	Total Customers Out:	2,315
SAIFI:	0.30	Cust Outages / Customers Served	CAIFI:	0.008	Avg Outages / Customer Out	Total Reported Hours:	11
Active:	7625	Active Electric Customers	Outages:	18	Total Number of Outages	Total Customer Hours Out:	1,462
ASAI:	99.99780	Average Percent System Available					

10/7/2023 Outage: This major outage was caused by a squirrel that created a large enough fault to open a fuse, burned-up transformer connections, take out a trip saver, and trip the feed from the La Prairie sub. The picture below on the left shows the burned up transformation connections. The picture below on the right shows the trip saver that was burned up. Though we often have squirrel-caused outages, it is rare for this much damage to occur. GRPU staff is reviewing the incident data including the trip saver settings in order to reduce future incidents like this.



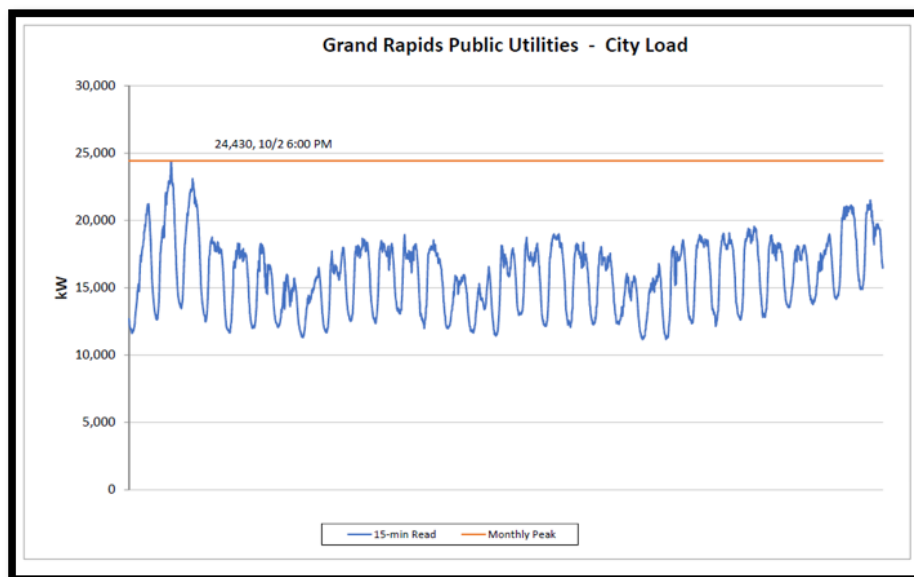
10/21/2023 Outage: This major outage was caused by a tree branch lying on an overhead line that resulted in partial power to several customers. There was no permanent equipment damage.

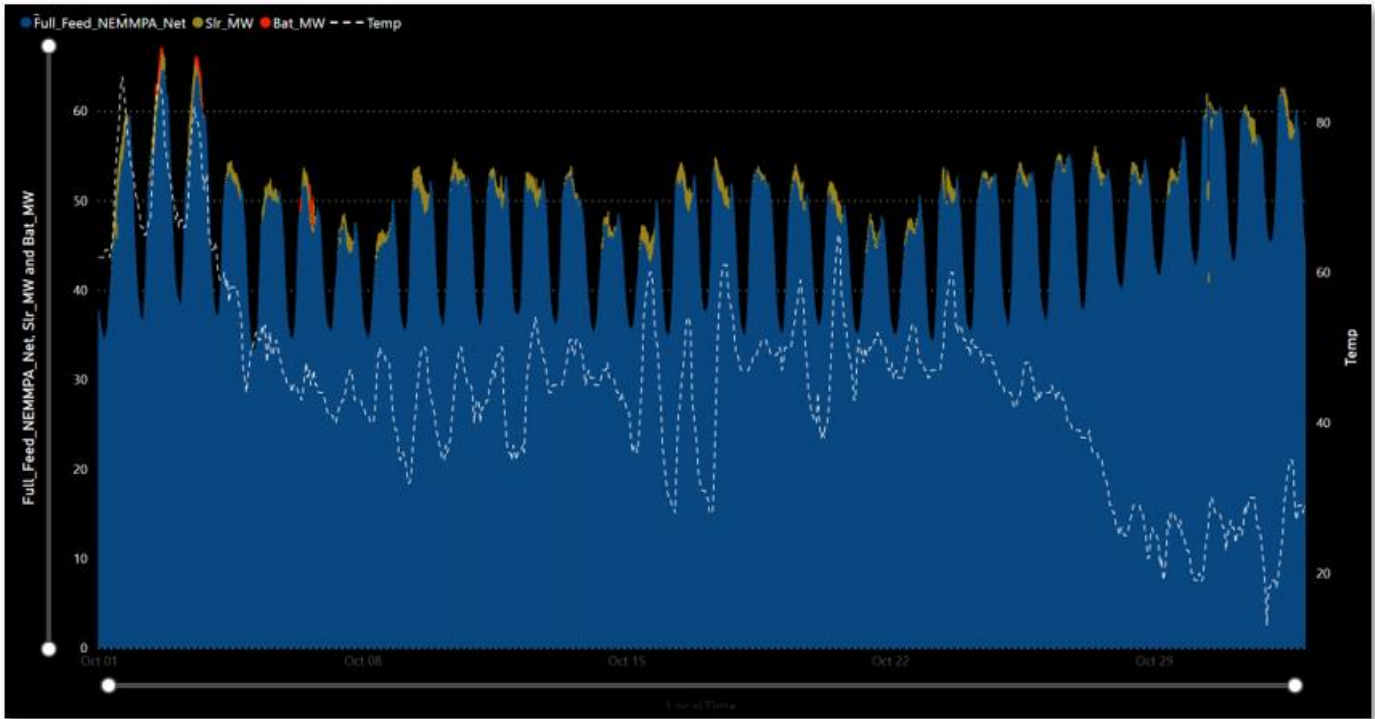
10/23/2023 Outage: A fault created a small fire on a pole that resulted in damage to the connection to all three phases. Power needed to be turned off for most of our southern service area in order to make the repair. After power was brought back on, an additional planned outage was needed to make an associated repair. The picture below shows crews repairing the 3-phase connection.



Electric Load Graph Last Month

The Monthly Peak was 24,430 kW on Oct 2nd. I've also added a preview of the same load data from the Power BI interface. This is a different way to view the same data and includes additional information. We'll be transitioning to more charts and graphs like this in the 2024 monthly reports.

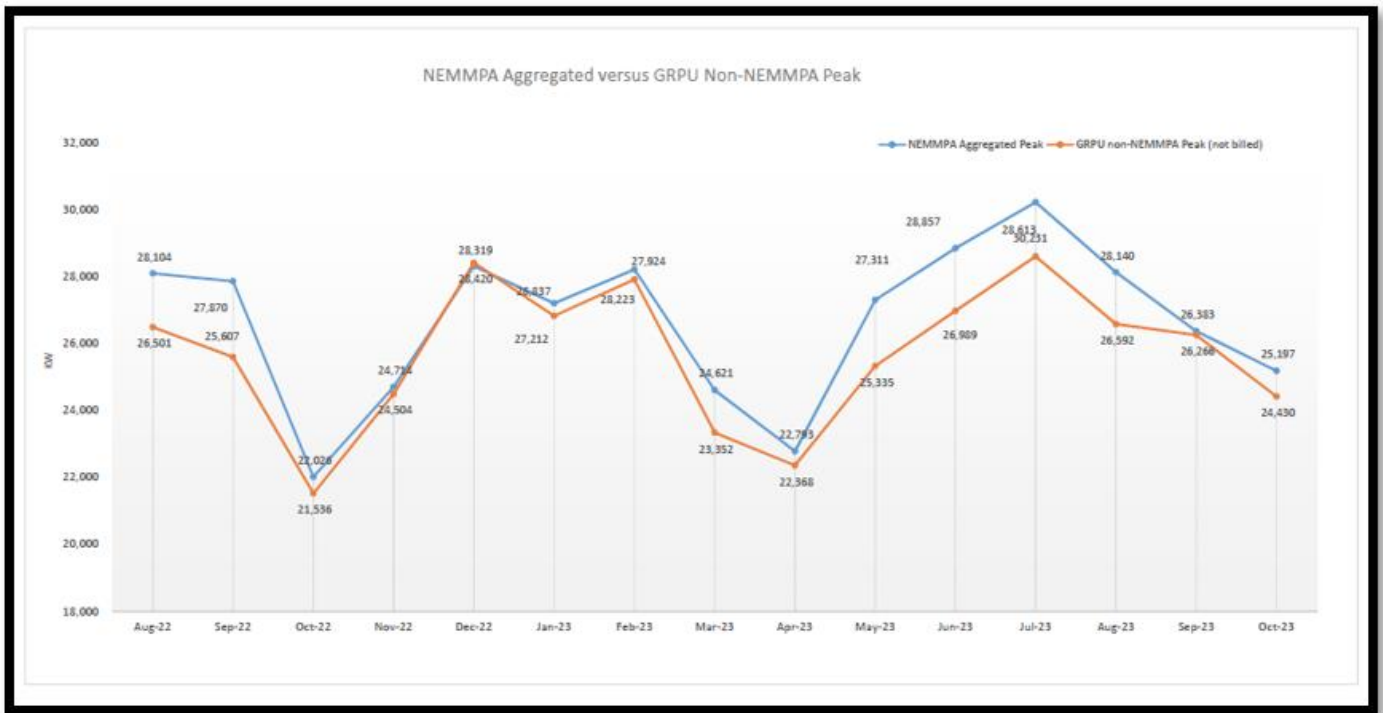




Preview Power BI

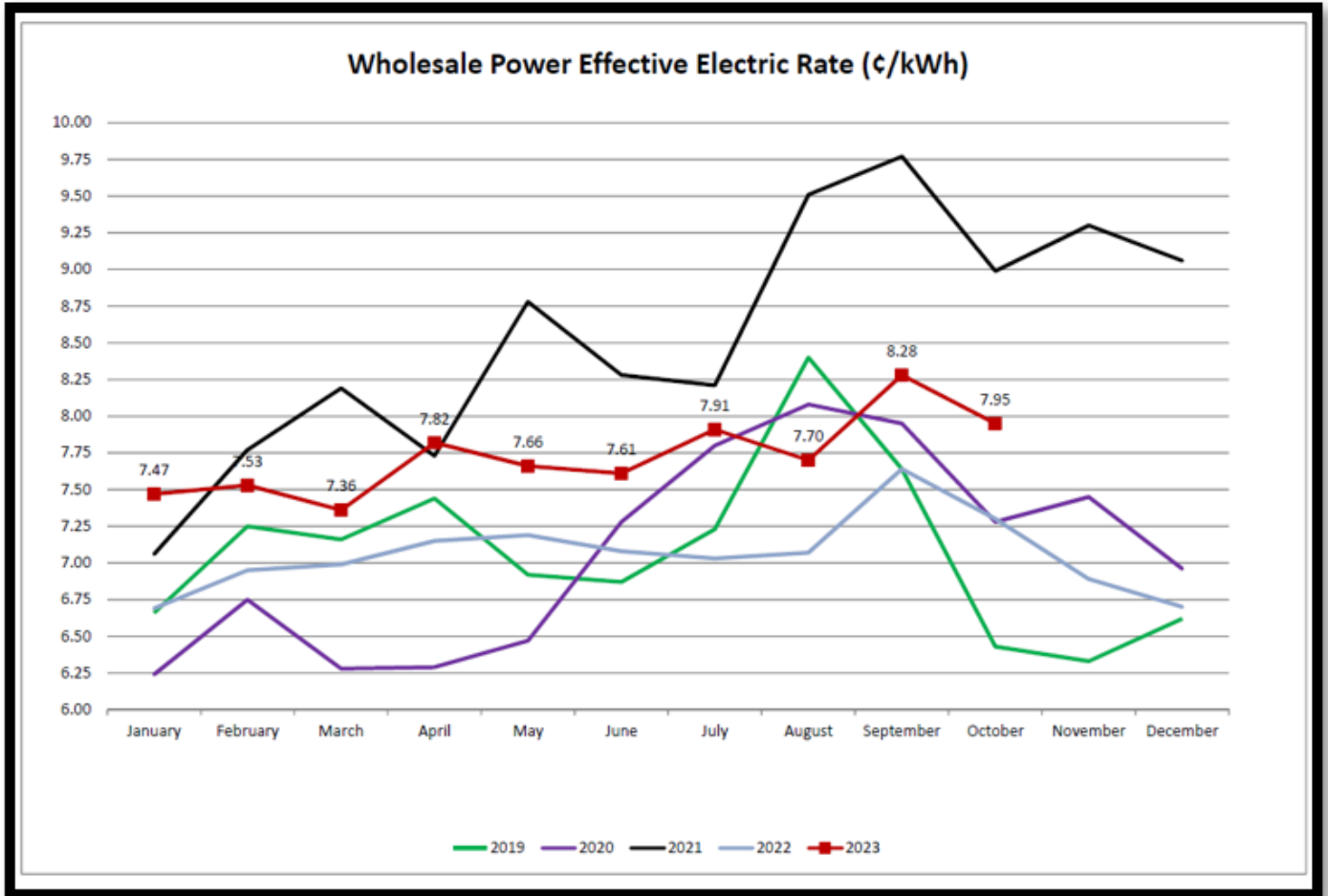
NEMMPA vs. non-NEMMPA Peak Last Month

The attached graph shows the aggregated NEMMPA peak versus non-NEMMPA peak.



Effective Wholesale Electric Power Rate Last Month

The attached graph shows the effective wholesale electric rate.



Capital and Operations Project Summary

COMMISSION REPORT CONTENTS									
Agency Lead	Dept	Proj Desc	Proj #	Budget	Amount Spent	Percent Spent (calc'd)	Percent Completed	Status	Noted Issues / Highlights
GRPU	ELEC	Distribution System Transformers	ELEC2306	\$150,000	\$0	0%	10%	In Progress	Larger order, lead-time reduction
GRPU	ELEC	Crystal Springs Conversion	ELEC2135	\$146,000	\$0	0%	0%	On Hold	trx supply chain issues - pushed to 2024
GRPU	ELEC	Reliability Upgrades	ELEC2314	\$100,000	\$0	0%	0%	In Progress	working through collecting costs
GRPU	ELEC	Tree Trimming	EOPS	\$150,024	\$143,596	96%	0%	In Progress	closing out 99% of yearly work
GRPU	ELEC	Backyard Machine	ELEC2318	\$90,000	\$90,000	100%	100%	Completed	
GRPU	ELEC	OH Replacements	ELEC2304	\$60,000	\$10,290	17%	0%	In Progress	
GRPU	ELEC	Power Pole Replacement	ELEC2311	\$50,000	\$0	0%	0%	Not Started	working through collecting costs
GRPU	ELEC	Distribution System Services	ELEC2301	\$40,000	\$0	0%	0%	Not Started	
GRPU	ELEC	SW 1st Avenue Conversion	ELEC2317	\$30,000	\$0	0%	0%	On Hold	trx supply chain issues - pushed to 2024
GRPU	ELEC	UG Replacements	ELEC2305	\$30,000	\$29,526	98%	1%	In Progress	working through collecting costs
GRPU	ELEC	Maple Street Conversion	ELEC2316	\$29,000	\$0	0%	0%	On Hold	trx supply chain issues - pushed to 2024
GRPU	ELEC	AMI Meters	ELEC2307	\$25,000	\$5,422	22%	1%	In Progress	
GRPU	ELEC	Security Lighting	ELEC2303	\$13,996	\$1,118	8%	0%	Not Started	
GRPU	ELEC	Dual Fuel Services	ELEC2302	\$2,560	\$0	0%	0%	Not Started	working through collecting costs
City	ELEC	21st St & Forest Hills Dr	EOPS			#DIV/0!		In Progress	
Developer	ELEC	Ainsworth Site Transformer	EOPS		\$62,283	#DIV/0!	75%	In Progress	changes in works
GRPU	ELEC	CSC Generator	EOPS			#DIV/0!		In Progress	2024 delivery
GRPU	ELEC	East Sub Rewire	EOPS		\$0	#DIV/0!	0%	Not Started	
City	ELEC	Forest Lake School Site Housing	EOPS			#DIV/0!		Not Started	
Developer	ELEC	Newman Campground - LaPrairie	EOPS		\$33,000	#DIV/0!	100%	Completed	

Status Definitions

- Not Started - no human or financial resources utilized
- In Progress - time or money spent on the project
- In Service - operational but final close out needed
- Completed - done and closed out
- On Hold - waiting on some type of significant action