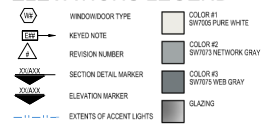


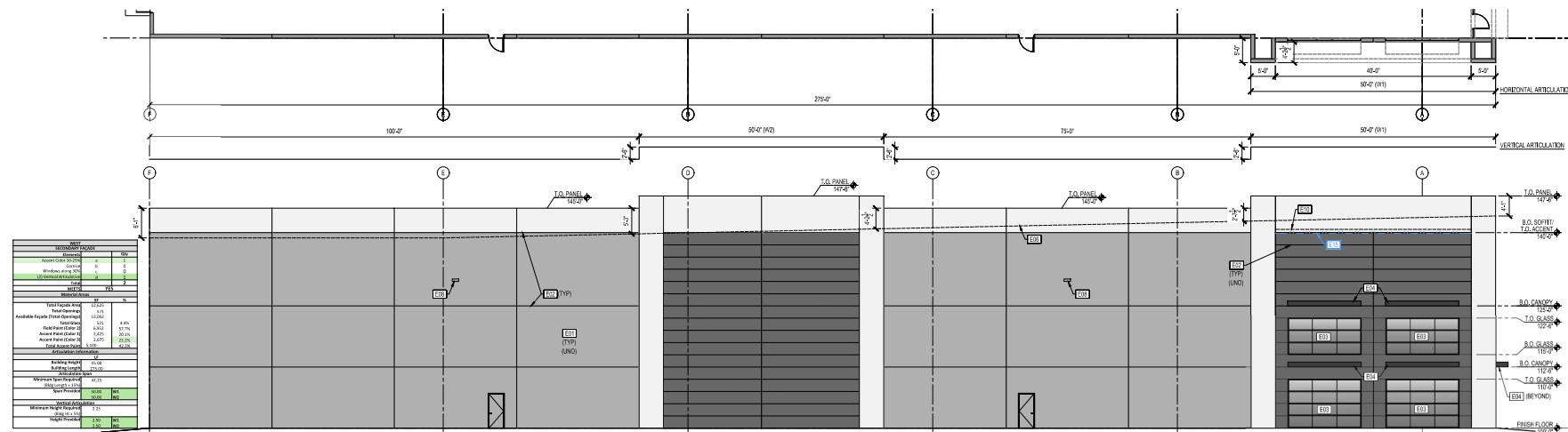
Exhibit D - Building Elevations
Page 1 of 4

ELEVATIONS LEGEND



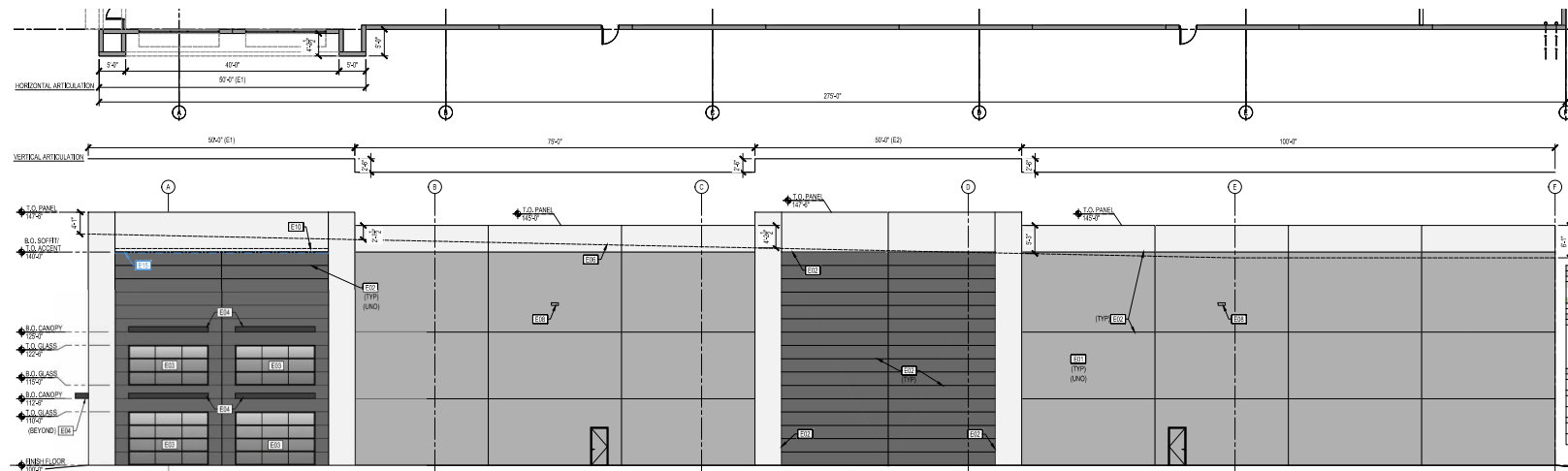
ELEVATION KEYED NOTES

- 001 PAINTED CONCRETE TILT WALL
- 002 PANEL RECL
- 003 ALUMINUM & GLASS STOREFRONT
- 004 PAINTED STEEL CANOPY (COLOR TO MATCH MULLIONS)
- 005 8" x 48" SCUPPER
- 006 LINE OF ROOF BEYOND
- 007 10M x 10M LOUVER
- 008 WALL PACK MOUNTED AT 30'-0" AFF (TYP)(UNC)
- 009 ROOF OVERFLOW DRAIN THRU WALL (RE: 03A(1)(10))
- 010 STEEL & ALUMINUM SOFFIT SYSTEM CANOPY (BEYOND)
- 011 PAINTED STEEL (COLOR TO MATCH MULLIONS)
- 012 EXTERIOR EGRESS FEATURE MOUNTED AT 8'-0" AFF (TYP)(UNC)(REF ELEC FOR SPEC)
- 013 24" x 24" LOUVER
- 014 SMOOTH WALL
- 015 ACCENT LIGHTING UNDERSIDE OF SOFFIT
- 016 ACCENT UPLIGHT



02 EXTERIOR BUILDING ELEVATION - WEST

Scale: 3/32" = 1'-0"



01 EXTERIOR BUILDING ELEVATION - EAST

Scale: 3/32" = 1'-0"

AZIMUTH:

architecture

10226 E Northwest Hwy
Box 66
Dallas, Texas 75226
214.261.9060

www.azimutharc.com

OAKDALE II

BUILDING A
Oakdale Road,
Grand Prairie, Texas 75050

3009A

CLIENT: JOB #:

1.09.11.24 Review
2.10.11.24 City Comments

REVISIONS:



THE SEAL APPROVED FOR THIS DOCUMENT HAS
BEEN AFFIXED BY ARCHITECT: A. J. B. ARCHITECT & ASSOCIATES
A. J. B. ARCHITECT & ASSOCIATES
A. J. B. ARCHITECT & ASSOCIATES
OFFICE UNDER THE TEXAS BOARD OF ARCHITECTURAL
EXAMINERS

SHEET CONTENTS:
EXTERIOR
ELEVATIONS-BLDG A

DAT: October 11, 2024

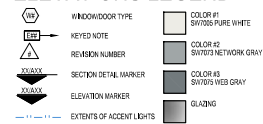
SHEET:

A7.10

© COPYRIGHT 2024 AZIMUTH ARCHITECTURE, INC.

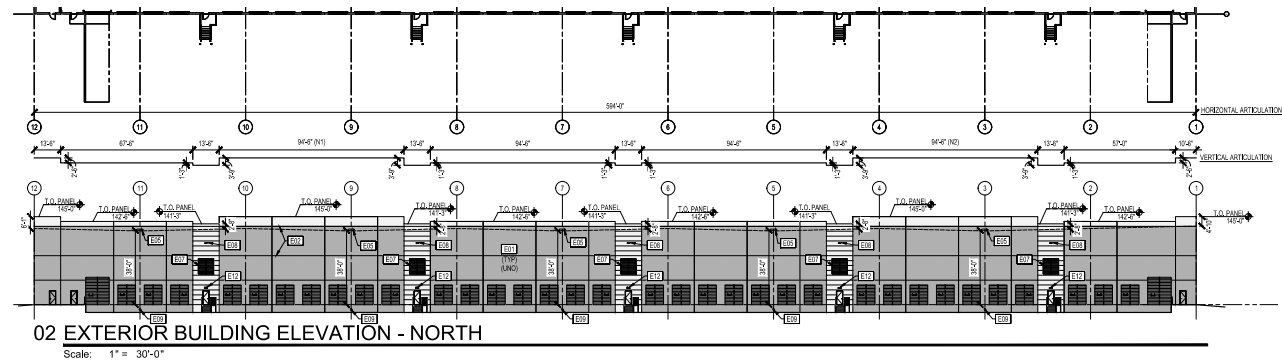
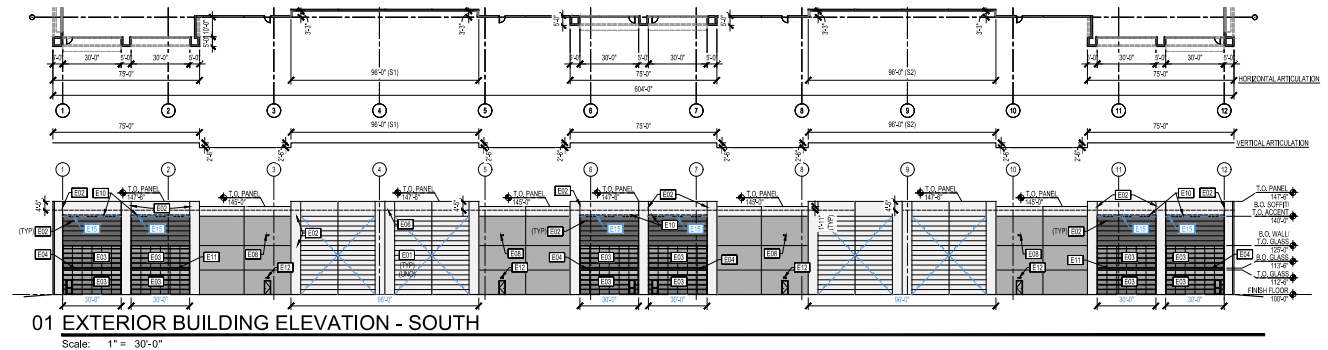
Exhibit D - Building Elevations
Page 2 of 4

ELEVATIONS LEGEND



ELEVATION KEYED NOTES

600	PAINTED CONCRETE TIL WALL	600	ROOF/OVERFLOW DRAIN THRU WALL (SEE QUOTE)
600	PANEL REVEAL	600	STEEL & ALUMINUM SOFFIT SYSTEM CANOPY (BEYOND)
600	ALUMINUM & GLASS STOREFRONT	600	PAINTED STEEL COLOR TO MATCH MILLIONS
600	PAINTED STEEL CANOPY (COLOR TO MATCH MILLIONS)	600	EXTERIOR GRESS TEXTURE PAINTED AT 1/4" AFF (TYP) (N/A) (REF SPEC FOR SPC)
600	3" x 4" SCUPPER	600	24" x 24" FLOOR
600	LINE OF ROOF OVER	600	SCREEN WALL
600	2 1/2" x 8" LOUVER	600	ACCENT LIGHTING UNDERSIDE OF SOFFIT
600	WALL PACK MOUNTED AT 30-42" AFF (TYP) (N/A)	600	ACCENT UPLIGHT

[illegible][illegible]

AZIMUTH:

architecture

10228 E Northwest Hwy
Box 66
Dallas, Texas 75226
214.261.9060

www.azimutharc.com

OAKDALE II

BUILDING A
Oakdale Road,
Grand Prairie, Texas 75050

3009A

1	09.11.24	Review
2	10.11.24	City Comments

3 _____

4 _____

5 _____

6 _____

7 _____

8 _____

0 _____

9 _____



THE SEAL APPEARING ON THIS DOCUMENT WAS

ALTERATIONS OF SEALED DOCUMENTS WITHOUT PROPER

NOTIFICATION TO THE RESPONSIBLE ARCHITECT IS AN OFFENSE UNDER THE TEXAS BOARD OF ARCHITECTURAL EXAMINERS.

SHEET CONTENTS:

EXTERIOR

ELEVATIONS-BLDG A

DATE: October 11, 2024

SHEET:

A7 11

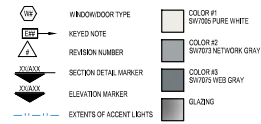
A7.11

© COPYRIGHT 2004 AZIMUTH : ARCHITECTURE, INC.

Exhibit D - Building Elevations

Page 4 of 4

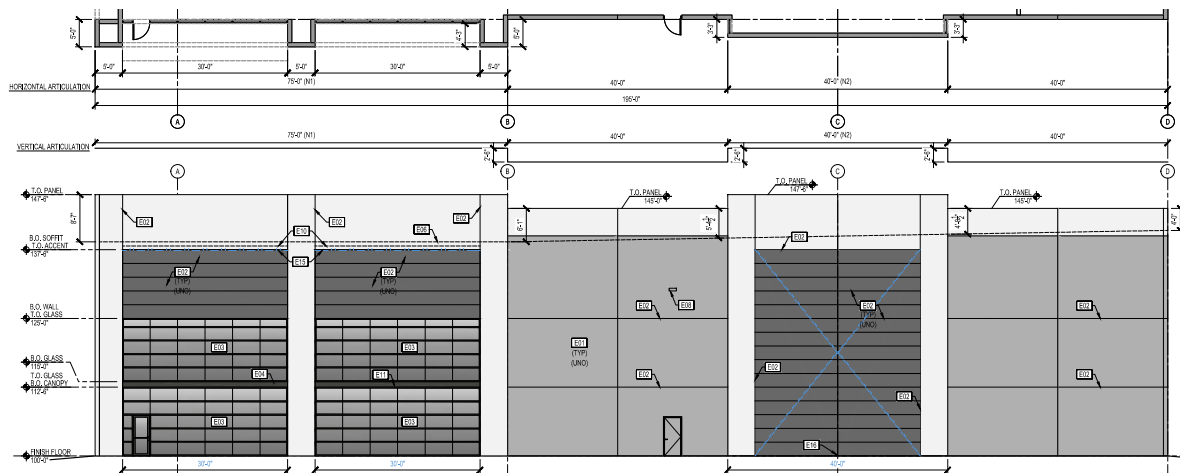
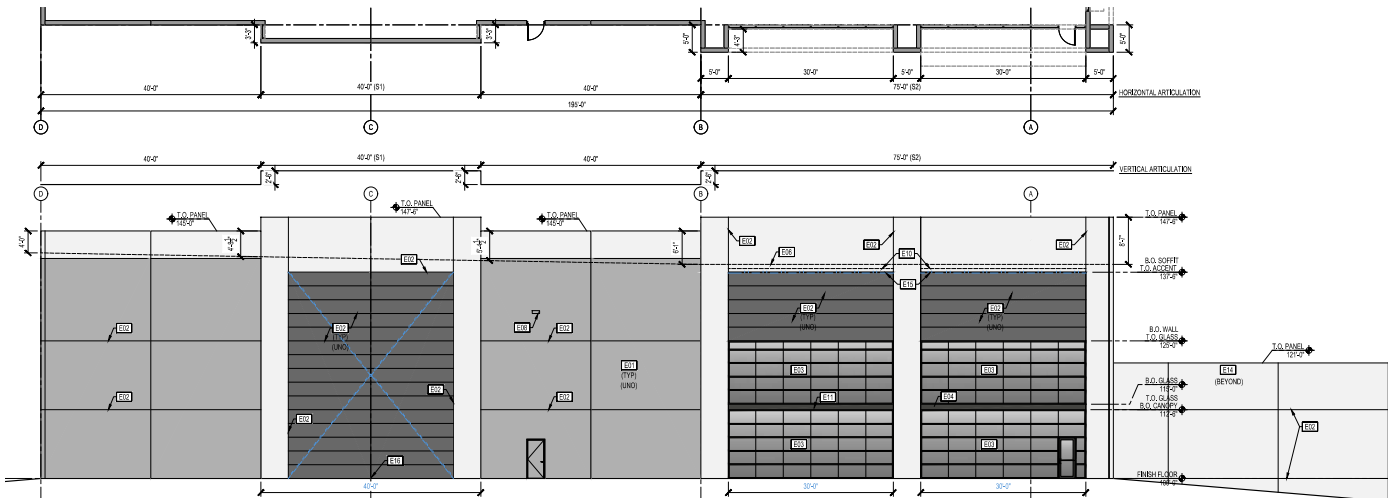
ELEVATIONS LEGEND



ELEVATION KEYED NOTES

- 1001 PAINTED CONCRETE TILT WALL
- 1002 PANEL REVEAL
- 1003 ALUMINUM & GLASS STOREFRONT
- 1004 PAINTED STEEL CANOPY (COLOR TO MATCH MULLIONS)
- 1005 8' x 40' SCUPPER
- 1006 LINE OF ROOF BEYOND
- 1007 PW & B/L LOWER
- 1008 WALL PACK MOUNTED AT 30'-0" AFF (TYP/UNQ)
- 1009 ROOF OVERFLOW DRAIN THRU WALL (SEE 03A10.10)
- 1010 STEEL & ALUMINUM SOFFIT SYSTEM CHAMPI (BEYOND)
- 1011 PAINTED STEEL (COLOR TO MATCH MULLIONS)
- 1012 EXTERIOR CORRESS FIXTURE MOUNTED AT 8'-0" AFF (TYP/UNQ) (REF ELEC FOR SPEC)
- 1013 30" x 30" DOWNER
- 1014 GREEN WALL
- 1015 ACCENT LIGHTING UNDERSIDE OF SOFFIT
- 1016 ACCENT UPLIGHT

SUMMARY			
DESCRIPTION	QTY	UNIT	AMOUNT
1001 PAINTED CONCRETE TILT WALL	1	EA	1.000000
1002 PANEL REVEAL	1	EA	1.000000
1003 ALUMINUM & GLASS STOREFRONT	1	EA	1.000000
1004 PAINTED STEEL CANOPY	1	EA	1.000000
1005 8' x 40' SCUPPER	1	EA	1.000000
1006 LINE OF ROOF BEYOND	1	EA	1.000000
1007 PW & B/L LOWER	1	EA	1.000000
1008 WALL PACK MOUNTED AT 30'-0" AFF (TYP/UNQ)	1	EA	1.000000
1009 ROOF OVERFLOW DRAIN THRU WALL (SEE 03A10.10)	1	EA	1.000000
1010 STEEL & ALUMINUM SOFFIT SYSTEM CHAMPI (BEYOND)	1	EA	1.000000
1011 PAINTED STEEL (COLOR TO MATCH MULLIONS)	1	EA	1.000000
1012 EXTERIOR CORRESS FIXTURE MOUNTED AT 8'-0" AFF (TYP/UNQ) (REF ELEC FOR SPEC)	1	EA	1.000000
1013 30" x 30" DOWNER	1	EA	1.000000
1014 GREEN WALL	1	EA	1.000000
1015 ACCENT LIGHTING UNDERSIDE OF SOFFIT	1	EA	1.000000
1016 ACCENT UPLIGHT	1	EA	1.000000
TOTAL			
1001 PAINTED CONCRETE TILT WALL	1	EA	1.000000
1002 PANEL REVEAL	1	EA	1.000000
1003 ALUMINUM & GLASS STOREFRONT	1	EA	1.000000
1004 PAINTED STEEL CANOPY	1	EA	1.000000
1005 8' x 40' SCUPPER	1	EA	1.000000
1006 LINE OF ROOF BEYOND	1	EA	1.000000
1007 PW & B/L LOWER	1	EA	1.000000
1008 WALL PACK MOUNTED AT 30'-0" AFF (TYP/UNQ)	1	EA	1.000000
1009 ROOF OVERFLOW DRAIN THRU WALL (SEE 03A10.10)	1	EA	1.000000
1010 STEEL & ALUMINUM SOFFIT SYSTEM CHAMPI (BEYOND)	1	EA	1.000000
1011 PAINTED STEEL (COLOR TO MATCH MULLIONS)	1	EA	1.000000
1012 EXTERIOR CORRESS FIXTURE MOUNTED AT 8'-0" AFF (TYP/UNQ) (REF ELEC FOR SPEC)	1	EA	1.000000
1013 30" x 30" DOWNER	1	EA	1.000000
1014 GREEN WALL	1	EA	1.000000
1015 ACCENT LIGHTING UNDERSIDE OF SOFFIT	1	EA	1.000000
1016 ACCENT UPLIGHT	1	EA	1.000000
TOTAL			
1001 PAINTED CONCRETE TILT WALL	1	EA	1.000000
1002 PANEL REVEAL	1	EA	1.000000
1003 ALUMINUM & GLASS STOREFRONT	1	EA	1.000000
1004 PAINTED STEEL CANOPY	1	EA	1.000000
1005 8' x 40' SCUPPER	1	EA	1.000000
1006 LINE OF ROOF BEYOND	1	EA	1.000000
1007 PW & B/L LOWER	1	EA	1.000000
1008 WALL PACK MOUNTED AT 30'-0" AFF (TYP/UNQ)	1	EA	1.000000
1009 ROOF OVERFLOW DRAIN THRU WALL (SEE 03A10.10)	1	EA	1.000000
1010 STEEL & ALUMINUM SOFFIT SYSTEM CHAMPI (BEYOND)	1	EA	1.000000
1011 PAINTED STEEL (COLOR TO MATCH MULLIONS)	1	EA	1.000000
1012 EXTERIOR CORRESS FIXTURE MOUNTED AT 8'-0" AFF (TYP/UNQ) (REF ELEC FOR SPEC)	1	EA	1.000000
1013 30" x 30" DOWNER	1	EA	1.000000
1014 GREEN WALL	1	EA	1.000000
1015 ACCENT LIGHTING UNDERSIDE OF SOFFIT	1	EA	1.000000
1016 ACCENT UPLIGHT	1	EA	1.000000
TOTAL			



SUMMARY			
DESCRIPTION	QTY	UNIT	AMOUNT
1001 PAINTED CONCRETE TILT WALL	1	EA	1.000000
1002 PANEL REVEAL	1	EA	1.000000
1003 ALUMINUM & GLASS STOREFRONT	1	EA	1.000000
1004 PAINTED STEEL CANOPY	1	EA	1.000000
1005 8' x 40' SCUPPER	1	EA	1.000000
1006 LINE OF ROOF BEYOND	1	EA	1.000000
1007 PW & B/L LOWER	1	EA	1.000000
1008 WALL PACK MOUNTED AT 30'-0" AFF (TYP/UNQ)	1	EA	1.000000
1009 ROOF OVERFLOW DRAIN THRU WALL (SEE 03A10.10)	1	EA	1.000000
1010 STEEL & ALUMINUM SOFFIT SYSTEM CHAMPI (BEYOND)	1	EA	1.000000
1011 PAINTED STEEL (COLOR TO MATCH MULLIONS)	1	EA	1.000000
1012 EXTERIOR CORRESS FIXTURE MOUNTED AT 8'-0" AFF (TYP/UNQ) (REF ELEC FOR SPEC)	1	EA	1.000000
1013 30" x 30" DOWNER	1	EA	1.000000
1014 GREEN WALL	1	EA	1.000000
1015 ACCENT LIGHTING UNDERSIDE OF SOFFIT	1	EA	1.000000
1016 ACCENT UPLIGHT	1	EA	1.000000
TOTAL			
1001 PAINTED CONCRETE TILT WALL	1	EA	1.000000
1002 PANEL REVEAL	1	EA	1.000000
1003 ALUMINUM & GLASS STOREFRONT	1	EA	1.000000
1004 PAINTED STEEL CANOPY	1	EA	1.000000
1005 8' x 40' SCUPPER	1	EA	1.000000
1006 LINE OF ROOF BEYOND	1	EA	1.000000
1007 PW & B/L LOWER	1	EA	1.000000
1008 WALL PACK MOUNTED AT 30'-0" AFF (TYP/UNQ)	1	EA	1.000000
1009 ROOF OVERFLOW DRAIN THRU WALL (SEE 03A10.10)	1	EA	1.000000
1010 STEEL & ALUMINUM SOFFIT SYSTEM CHAMPI (BEYOND)	1	EA	1.000000
1011 PAINTED STEEL (COLOR TO MATCH MULLIONS)	1	EA	1.000000
1012 EXTERIOR CORRESS FIXTURE MOUNTED AT 8'-0" AFF (TYP/UNQ) (REF ELEC FOR SPEC)	1	EA	1.000000
1013 30" x 30" DOWNER	1	EA	1.000000
1014 GREEN WALL	1	EA	1.000000
1015 ACCENT LIGHTING UNDERSIDE OF SOFFIT	1	EA	1.000000
1016 ACCENT UPLIGHT	1	EA	1.000000
TOTAL			

AZIMUTH:

architecture

10226 E Northwest Hwy
Box 66
Dallas, Texas 75226
214.261.9060

www.azimutharc.com

OAKDALE II

BUILDING B
Oakdale Road,
Grand Prairie, Texas 75050

3009B

REVISIONS	DATE	REVIEW
1	09.11.24	Review
2	10.11.24	City Comments
3		
4		
5		
6		
7		
8		
9		



THE SEAL APPROVED FOR THIS DOCUMENT WAS
AUTHORISED BY ARCHITECT, WILLIAM ARCHITECT & ASSOCIATES
A TEXAS PROFESSIONAL ARCHITECTURAL FIRM
OFFICE UNDER THE TEXAS BOARD OF ARCHITECTURAL ENGINEERS

SHEET CONTENTS:
EXTERIOR
ELEVATIONS-BLDG B

DATE: October 11, 2024

SHEET: A7.21

SITE PLAN
WEST OAKDALE INDUSTRIAL II
GRAND PRAIRIE, TEXAS
DALLAS COUNTY
15.8 ACRES
ZONED U
BUILDING 113,079 SF
CASE NO. 277-04-00008

© COPYRIGHT 2024 AZIMUTH ARCHITECTURE, INC.