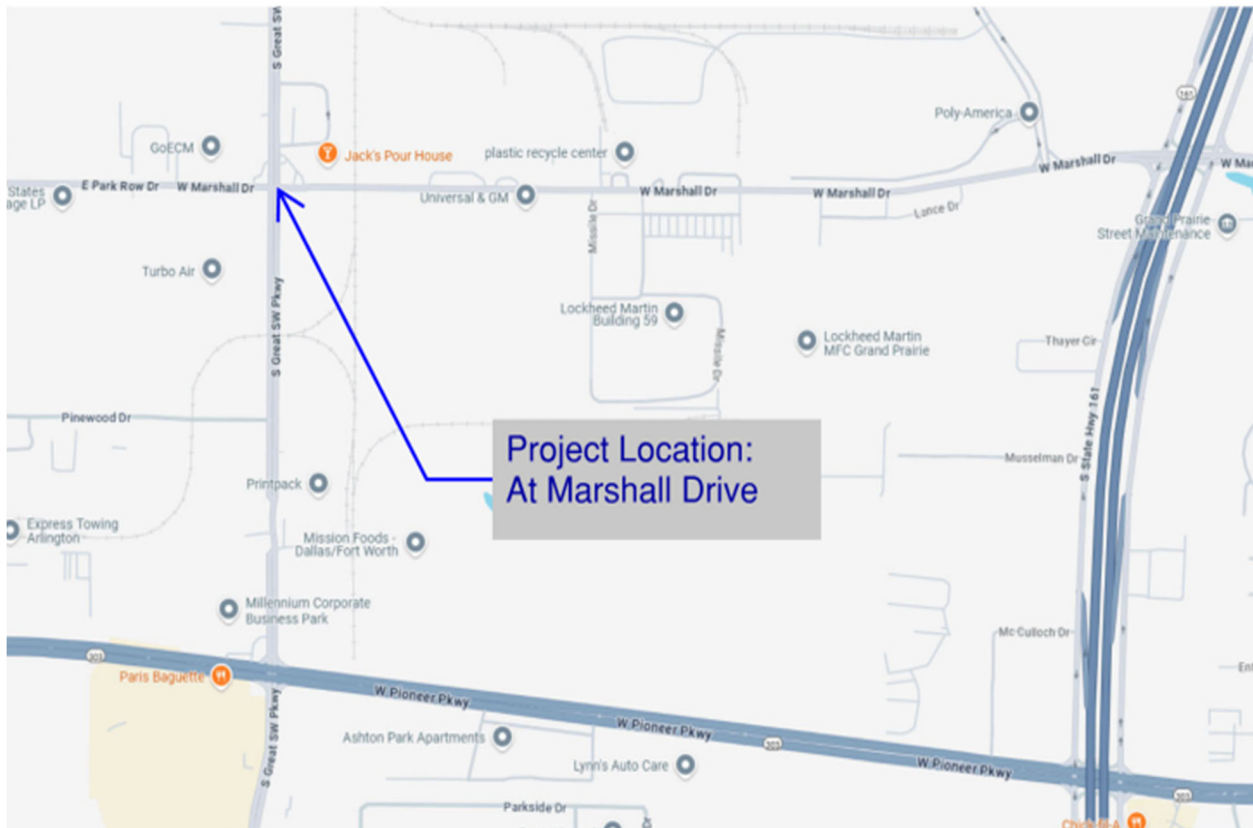


TxDOT:				Federal Highway Administration:	
CCSJ #	0902-90-353	AFA ID	Z00011991	CFDA No.	20.205
AFA CSJs	0902-90-353			CFDA Title	Highway Planning and Construction
District #	02	Code Chart 64#	16950		
Project Name	GREAT SW PKWY AT MARSHALL DR			AFA Not Used For Research & Development	

## ATTACHMENT A LOCATION MAP SHOWING PROJECT

0902-90-353: Install Traffic Signals and Curb Ramps  
Project Location: S Great Southwest Parkway at Marshall Drive



<b>TxDOT:</b>				<b>Federal Highway Administration:</b>	
<b>CCSJ #</b>	<b>0902-90-353</b>	<b>AFA ID</b>	<b>Z00011991</b>	<b>CFDA No.</b>	<b>20.205</b>
<b>AFA CSJs</b>	<b>0902-90-353</b>			<b>CFDA Title</b>	<b>Highway Planning and Construction</b>
<b>District #</b>	<b>02</b>	<b>Code Chart 64#</b>	<b>16950</b>		
<b>Project Name</b>	<b>GREAT SW PKWY AT MARSHALL DR</b>			<b>AFA Not Used For Research &amp; Development</b>	

## ATTACHMENT B PROJECT BUDGET

Costs will be allocated based on 90% Federal funding and 10% State funding until the federal funding reaches the maximum obligated amount. The Local Government will then be responsible for 100% of the costs.

Description	Total Estimated Cost	Federal Participation		State Participation		Local Participation	
		%	Cost	%	Cost	%	Cost
Engineering (by Local Government)	\$75,000	0%	\$0	0%	\$0	100%	\$75,000
Environmental (by Local Government)	\$5,000	0%	\$0	0%	\$0	100%	\$5,000
Construction (by Local Government)	\$751,406	90%	676,265	10%	\$75,141	0%	\$0
Subtotal	\$831,406		\$676,265		\$75,141		\$80,000
Environmental Direct State Costs	\$3,199	0%	\$0	0%	\$0	100%	\$3,199
Right of Way Direct State Costs	\$1	0%	\$0	0%	\$0	100%	\$1
Engineering Direct State Costs	\$3,199	0%	\$0	0%	\$0	100%	\$3,199
Utility Direct State Costs	\$1	0%	\$0	0%	\$0	100%	\$1
Construction Direct State Costs	\$47,188	0%	\$0	0%	\$0	100%	\$47,188
Indirect State Costs	\$43,981	0%	\$0	100%	\$43,981	0%	\$0
<b>TOTAL</b>	<b>\$928,975</b>		<b>\$676,265</b>		<b>\$119,122</b>		<b>\$133,588</b>

Initial payment by the Local Government to the State: \$6,400.00

Payment by the Local Government to the State before construction: \$47,188.00

Estimated total payment by the Local Government to the State \$53,588.00

This is an estimate. The final amount of Local Government participation will be based on actual costs.