



**CITY OF GRAND PRAIRIE
ORDINANCE**

MEETING DATE: 01/06/2026

PRESENTER: Brett Huntsman, AICP, Transportation & Mobility Services

TITLE: CPA-25-11-0023– Comprehensive Plan Amendment – Amend the 2018 Comprehensive Plan by updating the Master Thoroughfare Plan and Map by realigning N Great Southwest Parkway and extending Riverside Parkway generally located east of SH 360, north of Isuzu Parkway/ 114th St and south of the Trinity River/ City Limit (On December 9, 2025, the Planning and Zoning Commission recommended approval by a vote of 6-0)

RECOMMENDED ACTION: Approve

SUMMARY:

Amend the 2018 Comprehensive Plan by updating the Master Thoroughfare Plan (MTP) and Map by realigning N Great Southwest Parkway (GSW) and Riverside Parkway located east of SH 360, north of Isuzu Parkway/ 114th St and south of the Trinity River/ City Limit.

PURPOSE OF REQUEST:

The Comprehensive Plan Amendment is being considered to align the current Comprehensive Plan and MTP with City of Fort Worth and North Central Texas Council of Governments (NCTCOG) transportation planning and programming efforts. The extension of N GSW is part of a regional initiative to identify mobility projects to reduce overall traffic congestion.

The current alignment of N GSW shows the road making a turn to the west at a point approximately 0.3 miles north of Isuzu Parkway/ 114th to connect to Riverside Parkway at SH 360. Riverside Parkway at its northernmost point terminates at the intersection of SH 360.

This amendment creates a continuation of N GSW across the Trinity River to connect to existing Amon Carter Boulevard. This alignment was shown in NCTCOG regional modeling efforts to be an effective relief route for SH 360. The amendment also extends Riverside Parkway from its current intersection with SH 360 to N GSW to the east. This extension was also shown in the modeling efforts and is recommended for overall area connectivity

Riverside Parkway and N GSW will retain their current roadway classifications of Principal Arterial, 4-Lane Divided (P4D) and Principal Arterial 6-lane Divided (P6D), respectively.

On December 9, 2025, the Planning and Zoning Commission recommended approval of this amendment by a vote of 6-0.

The locations of the subject roads are shown in Exhibit A.

BODY

AN ORDINANCE OF THE CITY OF GRAND PRAIRIE, TEXAS, AMENDING THE 2018 COMPREHENSIVE PLAN BY UPDATING THE MASTER THOROUGHFARE PLAN AND MAP BY REALIGNING N GREAT SOUTHWEST PARKWAY AND RIVERSIDE PARKWAY LOCATED EAST OF SH 360, NORTH OF ISUZU PARKWAY/ 114TH ST AND SOUTH OF THE TRINITY RIVER/ CITY LIMIT; ESTABLISHING AN EFFECTIVE DATE

WHEREAS, the City of Grand Prairie adopted the 2018 Comprehensive Plan which includes a Master Thoroughfare Plan and Map; and

WHEREAS, Notice was given of a public hearing on said amendments to be held by the Planning and Zoning Commission of Grand Prairie, Texas, in the City Hall Plaza Building at 6:30 o'clock P.M. on December 9, 2025, such Notice of the time and place of such hearing having been given at least ten (10) days prior to such hearing by publication in the Fort Worth Star Telegram, Fort Worth, Texas, a newspaper of general circulation in such municipality; and

WHEREAS, after consideration of said amendment, the Planning and Zoning Commission of the City of Grand Prairie, Texas voted 6 to 0 to recommend to the City Council of Grand Prairie, Texas, that said Comprehensive Plan Amendment should be approved since its provisions are in the public interest and will promote the health, safety and welfare of the community /denied; and

WHEREAS, Notice was given of a further public hearing to be held by the City Council of the City of Grand Prairie, Texas, in the City Hall Plaza Building at 6:30 o'clock P.M. on January 6, 2026, to consider the advisability of amending the Comprehensive Plan as recommended by the Planning and Zoning Commission, such Notice of the time and place of such hearing having been given at least fifteen (15) days prior to such hearing by publication in the Fort Worth Star Telegram, Fort Worth, Texas, a newspaper of general circulation in such municipality.

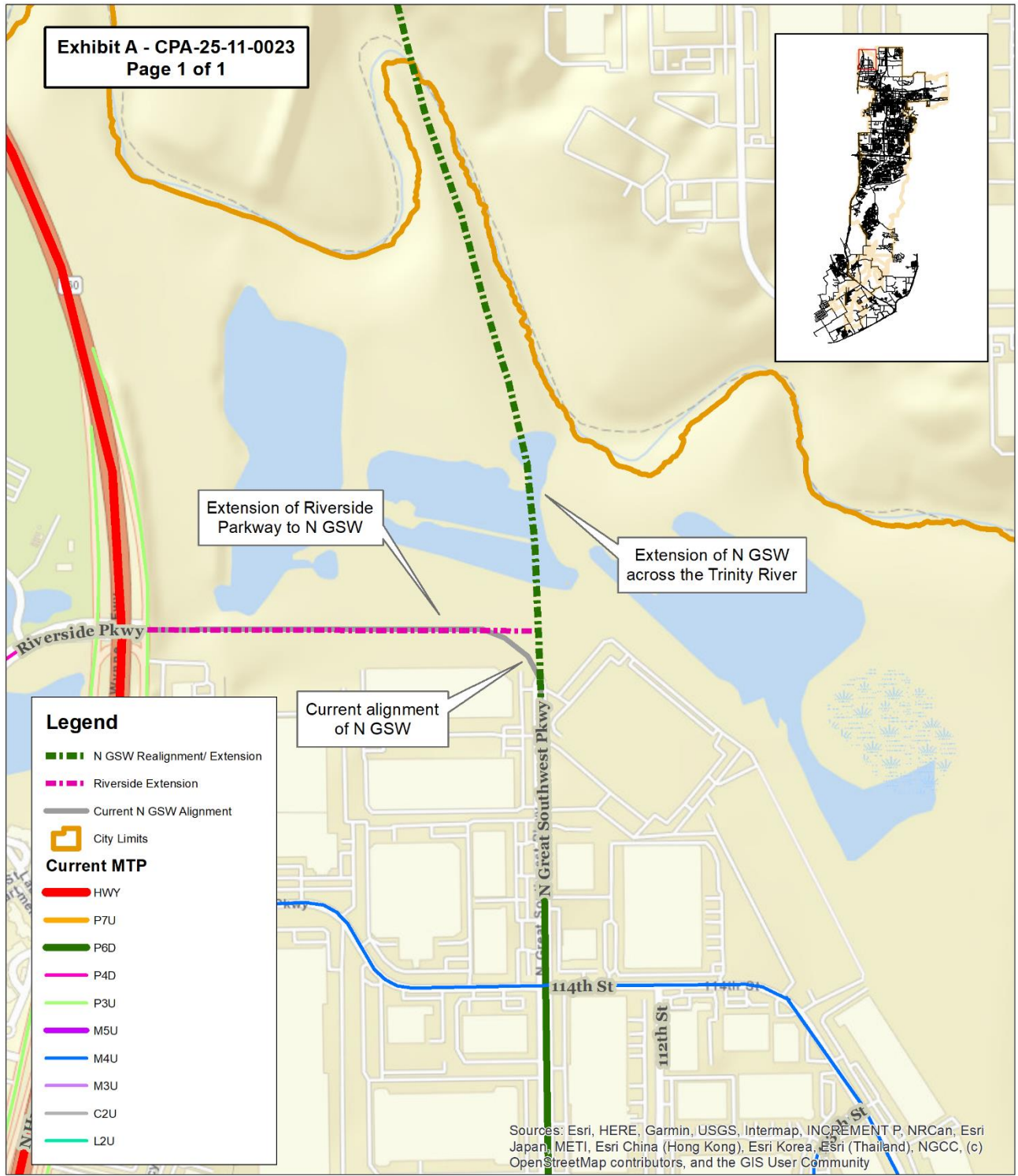
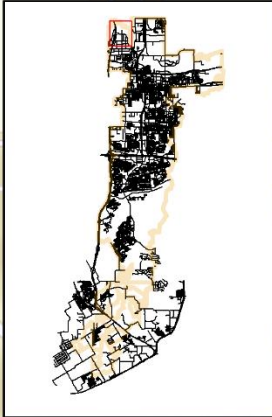
NOW, THEREFORE, BE IT ORDAINED BY THE CITY COUNCIL OF THE CITY OF GRAND PRAIRIE, TEXAS THAT:

SECTION 1. The 2018 Comprehensive Plan for the City of Grand Prairie is hereby amended to realign N Great Southwest Parkway and Riverside Parkway generally located east of SH 360, north of Isuzu Parkway and south of the Trinity River/ City Limit, as shown in Exhibit A, attached hereto and incorporated herein for all purposes.

SECTION 2. If any section, subsection, sentence, clause, phrase or portion of this ordinance is for any reason held invalid or unconstitutional by any court of competent jurisdiction, such provisions and such holding shall not affect the validity of the remaining portions thereof.

SECTION 3. This ordinance shall be in full force and effect from and after its passage, approval and publication.

PASSED AND APPROVED BY THE CITY COUNCIL OF THE CITY OF GRAND PRAIRIE, TEXAS, ON THIS THE 6TH DAY OF JANUARY 2026.



Legend

- N GSW Realignment/ Extension
- Riverside Extension
- Current N GSW Alignment
- City Limits

Current MTP

- HWY
- P7U
- P6D
- P4D
- P3U
- M5U
- M4U
- M3U
- C2U
- L2U

Sources: Esri, HERE, Garmin, USGS, Intermap, INCREMENT P, NRCan, Esri Japan, METI, Esri China (Hong Kong), Esri Korea, Esri (Thailand), NGCC, (c) OpenStreetMap contributors, and the GIS User Community



CASE LOCATION MAP
CPA-25-11-0023



City of Grand Prairie
Transportation & Mobility Services

(972) 237-8139
www.gptx.org