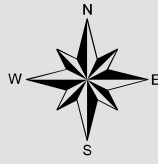


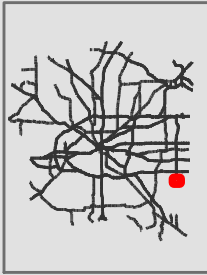


- Legend**
- Deeds_Boundary
 - RECORDBOUNDARYTYPE
 - Parcel Line
 - Parcel Split Line
 - Private Road
 - ROW
 - Unknown
 - HistoricLot
 - School
 - City
 - Abstracts
 - County
 - Water_District

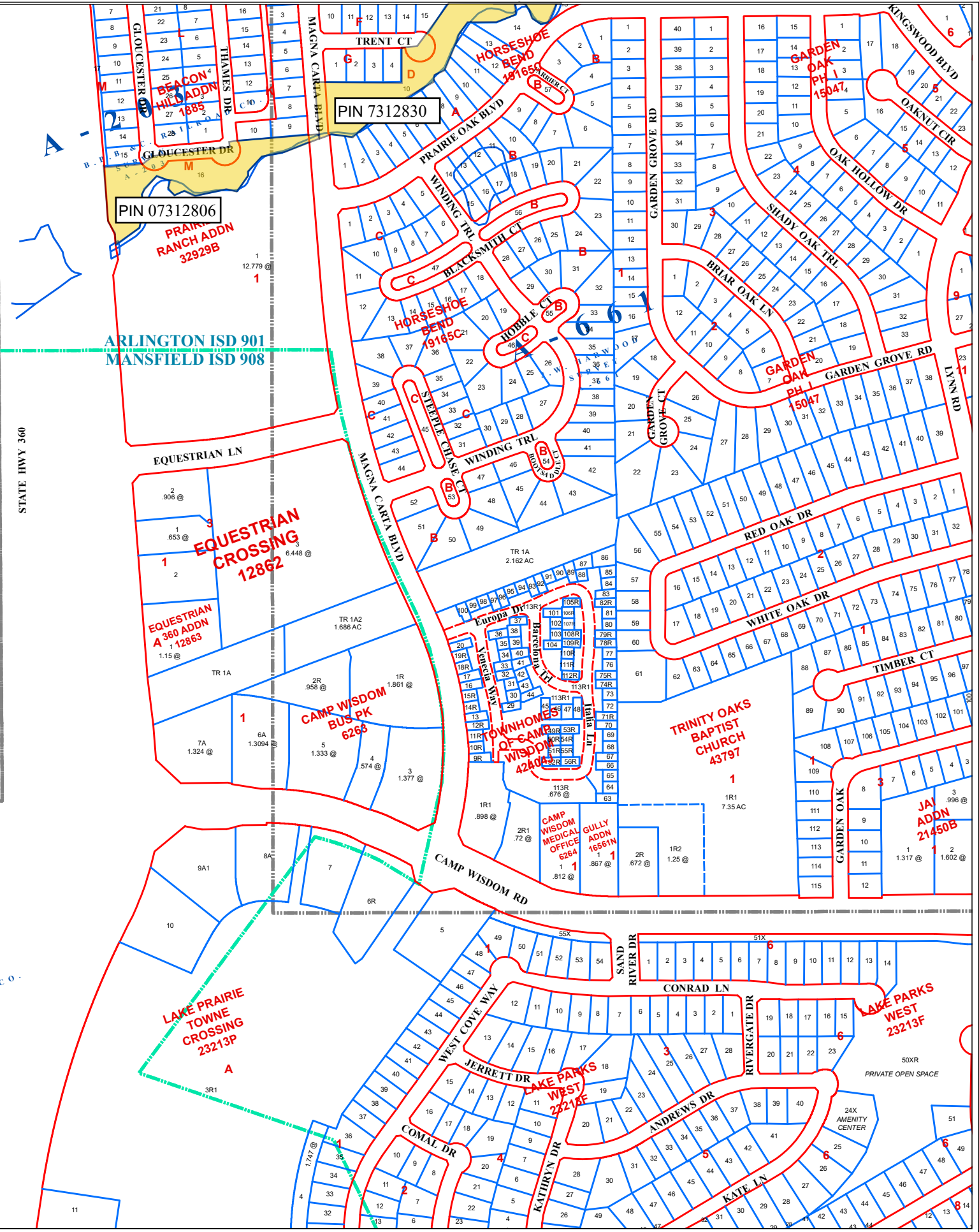
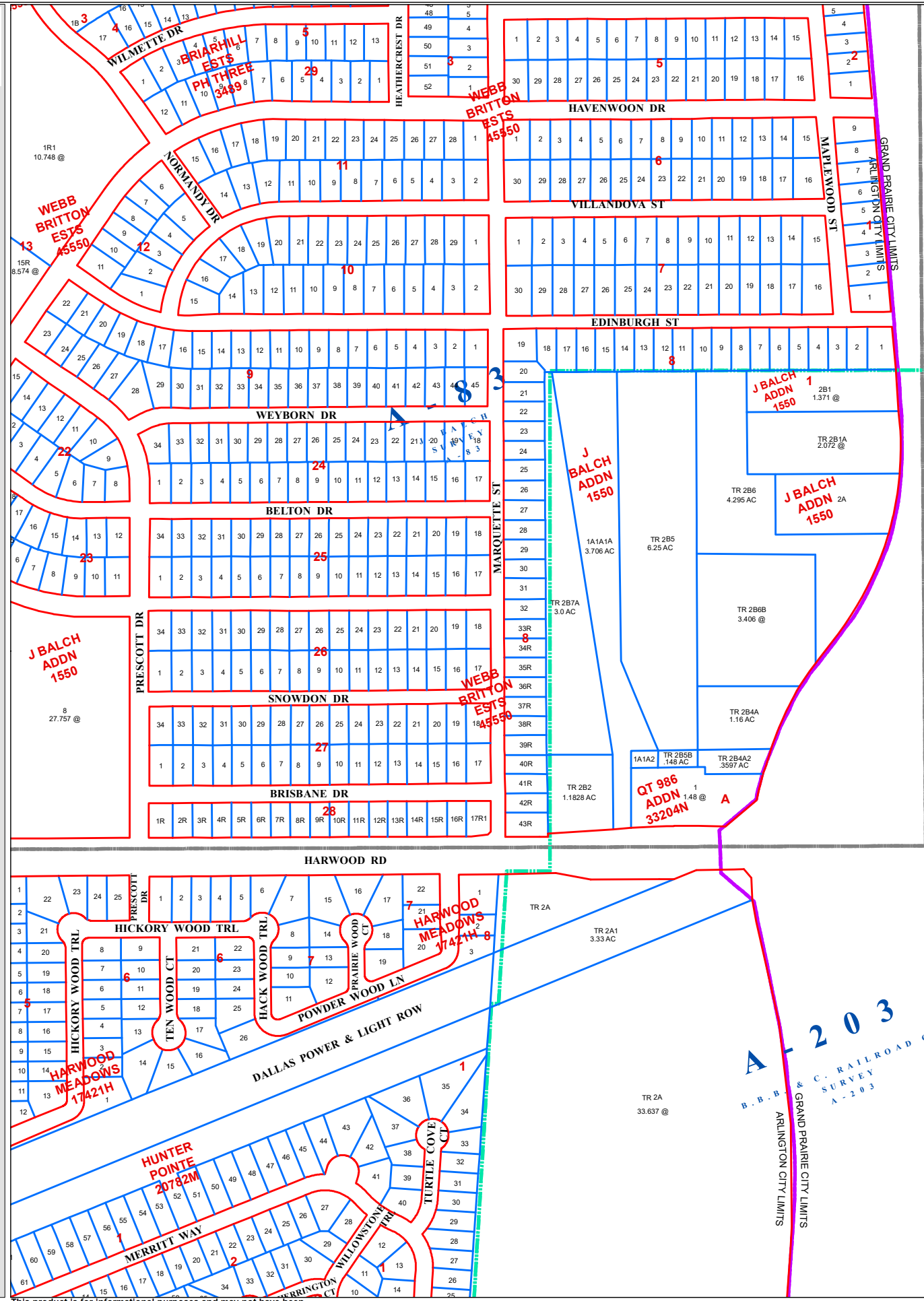


Map created on:
3/22/2023

1 inch = 400 feet



* map location



This product is for informational purposes and may not have been prepared for or be suitable for legal, engineering, or surveying purposes. It does not represent an on-the-ground survey and represents only the approximate relative location of property boundaries.

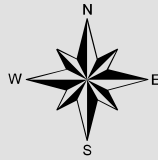
Areas highlighted in yellow are subject to the Amendment

2132-356



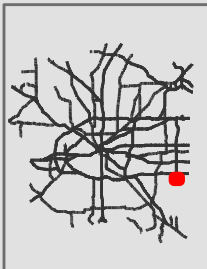
Legend

- Deeds_Boundary
- RECORDBOUNDARYTYPE
- Parcel Line
- Parcel Split Line
- Private Road
- ROW
- Unknown
- HistoricLot
- School
- City
- Abstracts
- County
- Water_District

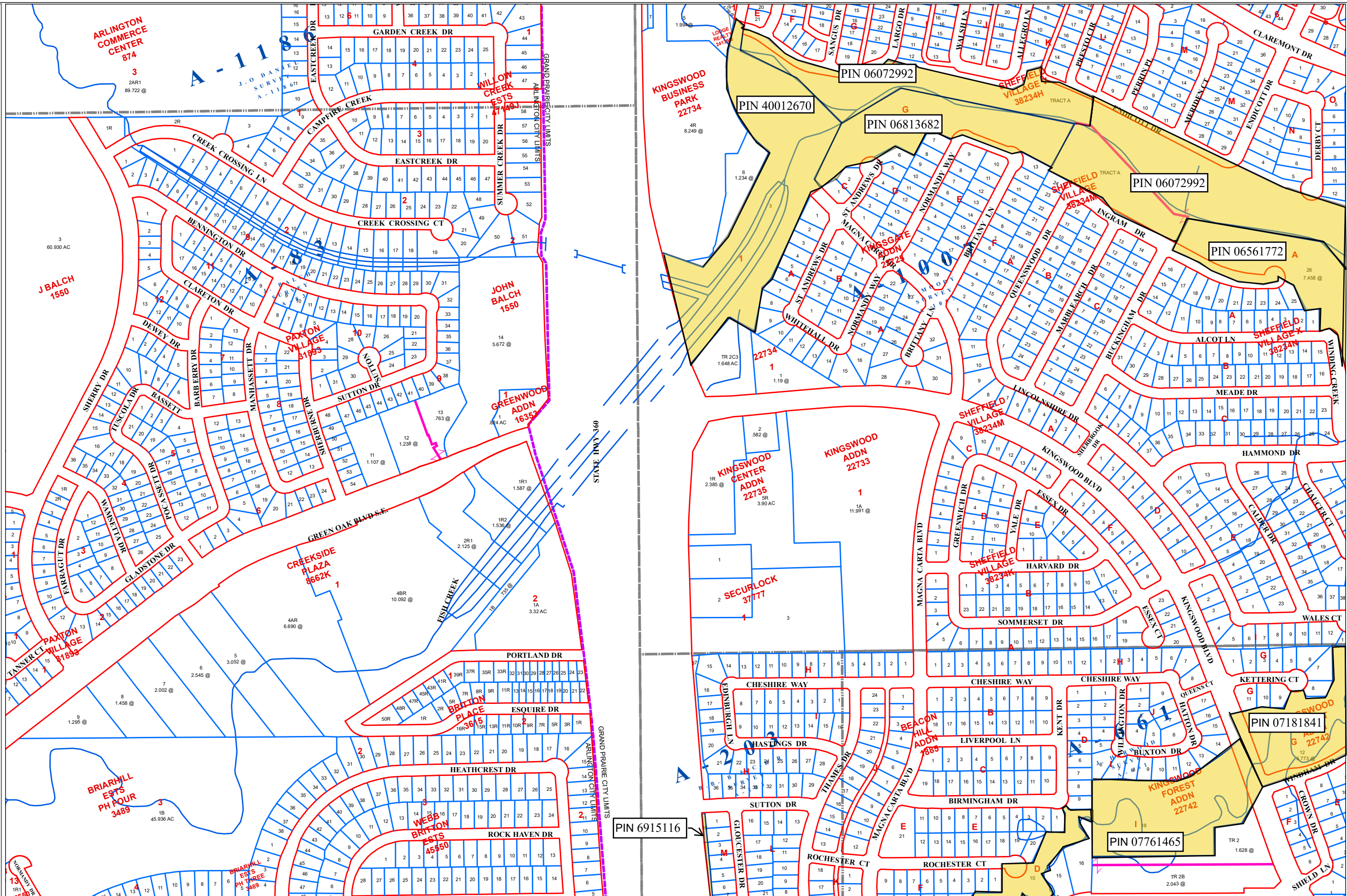


Map created on: 3/22/2023

1 inch = 400 feet



* map location



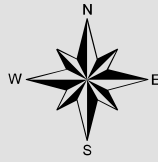
This product is for informational purposes and may not have been prepared for or be suitable for legal, engineering, or surveying purposes. It does not represent an on-the-ground survey and represents only the approximate relative location of property boundaries.

Areas highlighted in yellow are subject to the Amendment

2132-360

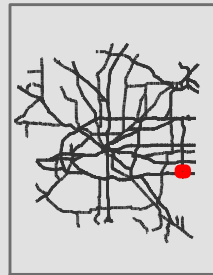


- Legend**
- Deeds_Boundary
 - RECORDBOUNDARYTYPE
 - Parcel Line
 - Parcel Split Line
 - Private Road
 - ROW
 - Unknown
 - HistoricLot
 - School
 - City
 - Abstracts
 - County
 - Water_District

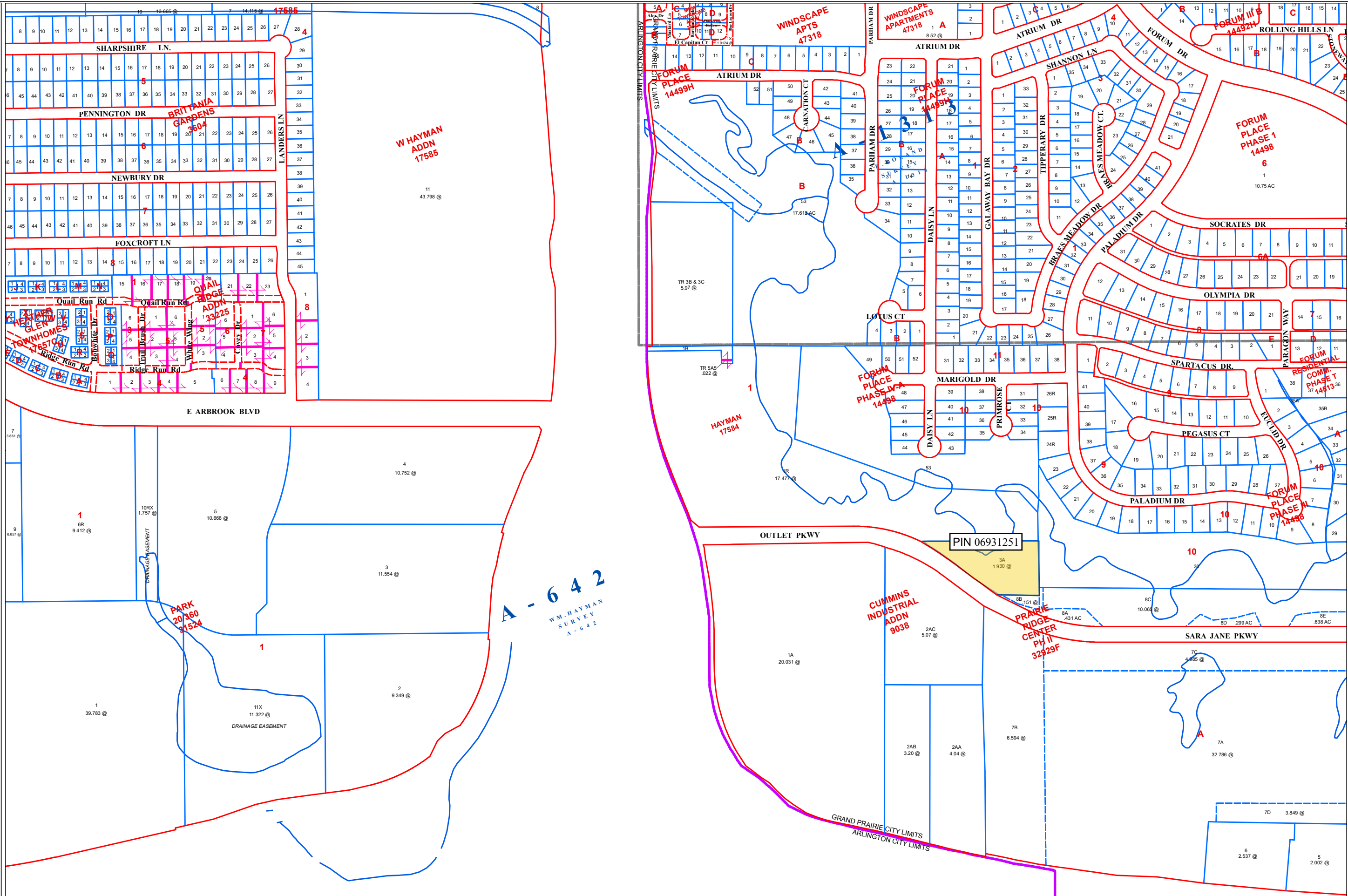


Map created on:
3/22/2023

1 inch = 400 feet



* map location



This product is for informational purposes and may not have been prepared for or be suitable for legal, engineering, or surveying purposes. It does not represent an on-the-ground survey and represents only the approximate relative location of property boundaries.

Areas highlighted in yellow are subject to the Amendment

2132-368

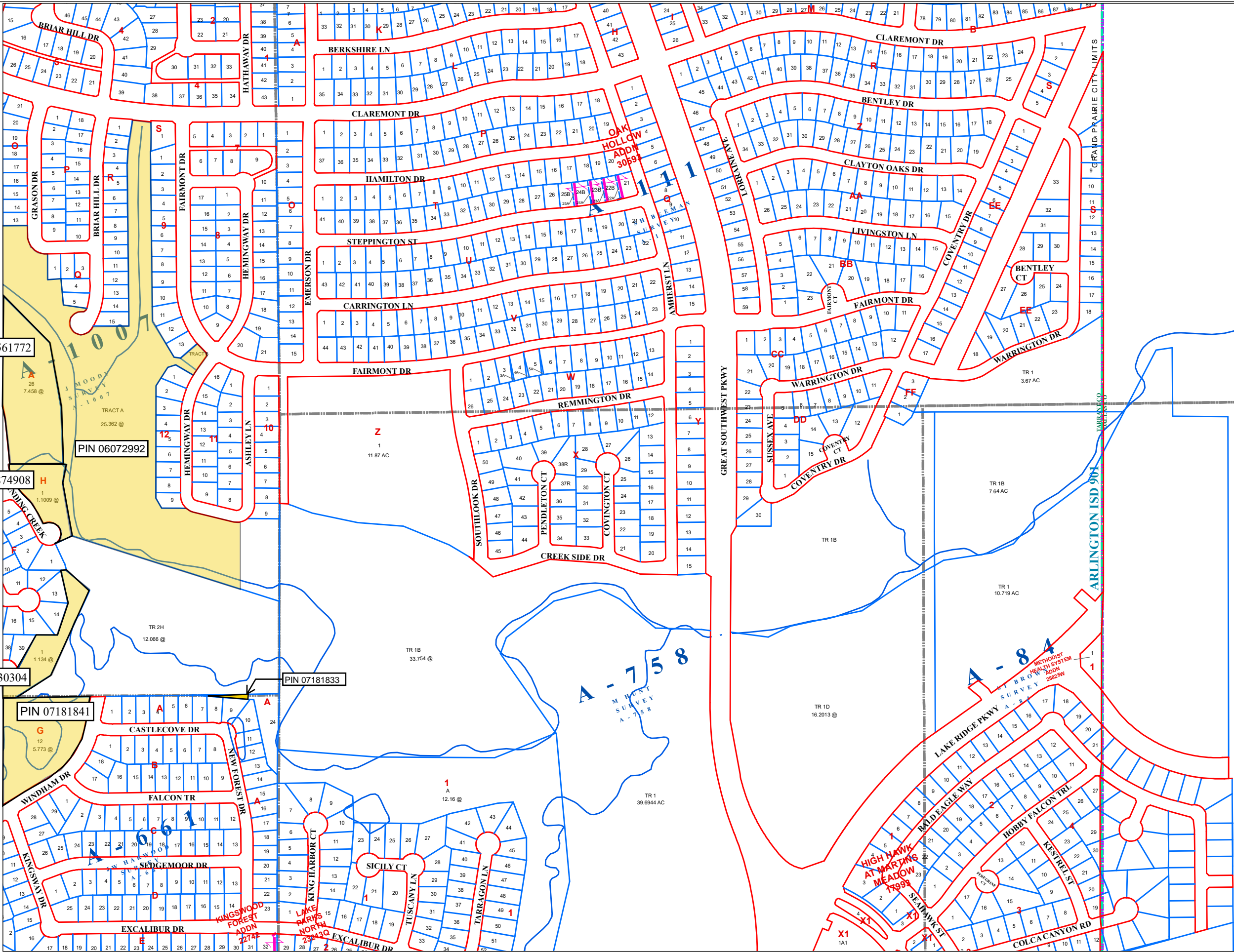


Legend

Deeds_Boundary

RECORDBOUNDARYTYPE

- Parcel Line
- Parcel Split Line
- Private Road
- ROW
- Unknown
- HistoricLot
- School
- City
- Abstracts
- County
- Water_District



PIN 06561772

PIN 06072992

PIN 06874908

PIN 07030304

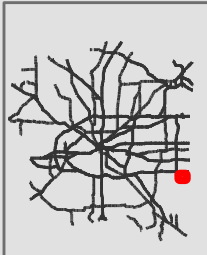
PIN 07181841

PIN 07181833



Map created on:
3/22/2023

1 inch = 40'



* map location

This product is for informational purposes and may not have been prepared for or be suitable for legal, engineering, or surveying purposes. It does not represent an on-the-ground survey and represents only the approximate relative location of property boundaries.

Areas highlighted in yellow are subject to the Amendment

2138-360