

Specific Use Permit – Operational Plan

TruckSmart CDL Academy, LLC

Address:

2080 North Hwy 360. Suite 135

Grand Prairie, TX 75050

(682) 241-6593

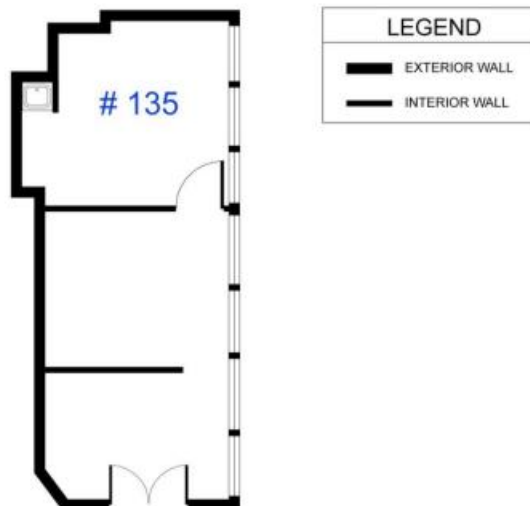
Floor Plan:

**EXHIBIT “A”
Floorplan**

**CARRIER 360 OFFICE BUILDING
Suite 135**

Grand Prairie, Texas 75050

542 RSF



Trash Service:

Trash service is included in building service. Already submitted to environment. Approved.

Health Permit:

NO food service, sales, storage or preparation, day care center, chemical storage, etc.

Storage:

Unit will not be used as storage.

Hours of Operation

Days & Hours of Operation:

Monday 8:30 a.m. – 5:30 p.m.

Tuesday 8:30 a.m. – 5:30 p.m.

Wednesday 8:30 a.m. – 5:30 p.m.

Thursday 8:30 a.m. – 5:30 p.m.

Friday 8:30 a.m. – 5:30 p.m.

Saturday 11:00 3:00

Day to Day Operations:

- Welcome/Greet new potential students and explain ways of getting CDL
- Enroll New Students
- Over syllabus and conduct orientation for students
- Schedule students on one-on-one training sessions
- Schedule testing days & times
- Make copies of training materials

Office Employees: Two (2)

1 - Abdul A. Nuur – Business Manager

2 - Candy Elizondo – Office Manager

Abdulrahman A. Nuur



Thanks.



2080 N STATE HIGHWAY 360, SUITE 120, GRAND PRAIRIE, TX 75050

March 18, 2025

RE: TruckSmart CDL Academy

Day to Day Operations at Office Location:

Per tenant, Abdulrahman A. Nuur, TruckSmart CDL Academy request, I am here to confirm that ONLY in-classroom training will be provided at 2080 North Hwy 360. Suite 135 Grand Prairie, TX 75050. Other in-interrelated activities may include the following.

- Welcome/Greet new potential students and explain ways of getting CDL
- Enroll New Students
- Conduct orientation for new students
- Schedule students for training sessions – days & times
- Schedule DPS testing days & times
- Make copies of training materials
- Record keeping
- Process Payroll

Thank you.

Cordially,

Brittany Cowen

Property Manager

214.638.0577

WWW.ANDREWS-DILLINGHAM.COM