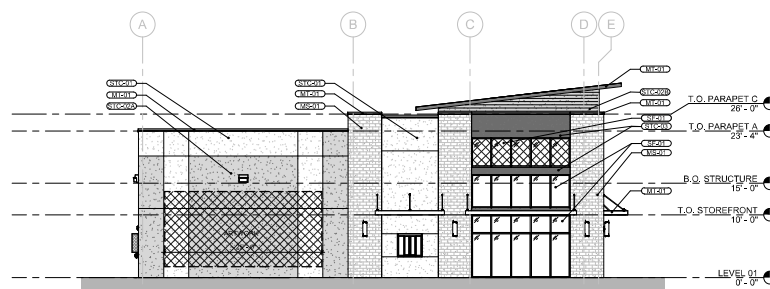
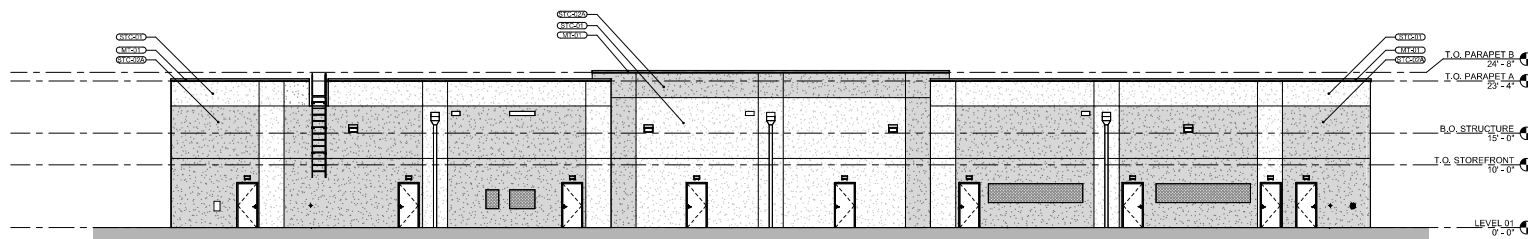


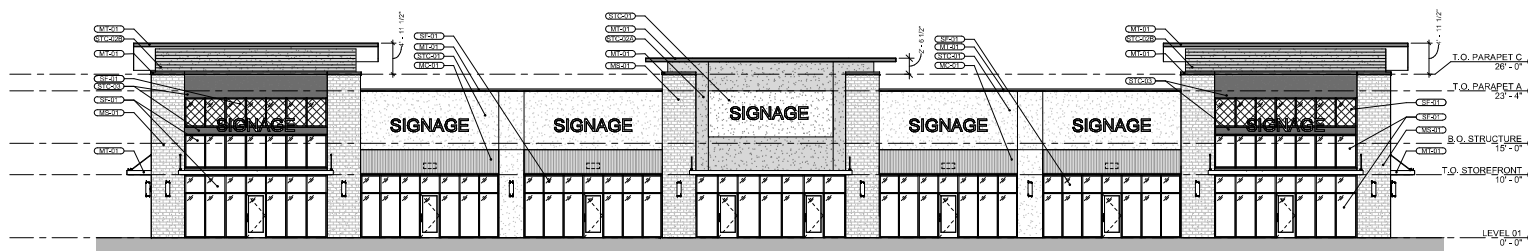
**4 EXTERIOR ELEV - BLDG A - NORTH**  
1/8" = 1'-0"



### 3 EXTERIOR ELEV - BLDG A - SOUTH



**2 EXTERIOR ELEV - BLDG A - WEST**  
1/8" = 1'-0"



**1 EXTERIOR ELEV - BLDG A - EAST**  
1/8" = 1'-0"

EXTERIOR WALLS					
WALL	TOTAL AREAS	STUCCO	BRICK	GLASS	DOOR
EAST	5,167 SF	2,277 SF = 44%	832 SF = 16%	2,078 SF = 40%	-
WEST	4,716 SF	4,520 SF = 96%	-	-	189 SF = 4%
NORTH	1,899 SF	1,147 SF = 60%	420 SF = 22%	332 SF = 18%	-
SOUTH	1,899 SF	1,132 SF = 60%	420 SF = 22%	347 SF = 18%	-
TOTAL	13,703 SF	9,085 SF = 66.3%	1,872 SF = 12.2%	2,797 SF = 20.1%	189 SF = 1.4%

WINDOWS AND CANOPIES		
	TOTAL LENGTHS	PERCENTAGE
BUILDING PERIMETER	552 FT	100%
CANOPIES	204 FT	40%
*WINDOWS	199 FT	36%

\*APPROXIMATELY 50 FT. OF ARTWORK PROVIDED ON NORTH AND SOUTH ELEVATIONS FOR VARIANCE OF TOTAL WINDOW REQUIREMENTS









\*APPROXIMATELY 50 FT OF ARTWORK PROVIDED ON NORTH AND SOUTH FACADE FOR VARIANCE OF TOTAL WINDOW REQUIREMENT

EXTERIOR DESIGN  
NOTES

THE EXTERIOR ELEVATIONS ARE DEVELOPED WITH THE INTENT TO MEET THE FOLLOWING ITEMS INDICATED IN THE DOCUMENT "APPENDIX F MENU ITEMS CHECKLIST" UNDER THE BUILDING DESIGN SECTION. WHICH AT LEAST SIX MENU ITEMS ARE REQUIRED.

1. COLOR CONTRAST
2. CORNER TREATMENT
3. BUILDINGS AT KEY INTERSECTIONS
4. ROOF PROFILE VARIATION
5. ARTICULATION ELEMENTS
6. ENHANCED WINDOWS
7. CANOPY VARIATION
8. DESIGN ELEMENTS

**EXTERIOR FINISH  
LEGEND**

-  **MF-301**  
THREE MASONRY VENEER  
MANUF. CL-Masonry  
STYLE: SLOAN CITY BRICK +  
HEARTHSE VEOLOUR
-  **MF-302**  
PORTLAND CEMENT PLASTER  
(COLOR: SWH063 "PORCELAINE")
-  **MF-303**  
PORTLAND CEMENT PLASTER  
(COLOR: SWH107 "GRAY SINGLE")
-  **MF-304**  
PORTLAND CEMENT PLASTER  
(COLOR: SWH107 "GRAY SINGLE")  
NOTE: HORIZONTAL AESTHETIC  
CONTROL JOINTS EVERY 6"
-  **MF-305**  
PORTLAND CEMENT PLASTER  
(COLOR: SWH258 "TROPICAL BLACK")
-  **MF-306**  
COPING - METALS  
(COLOR: SWH258 "TROPICAL BLACK")
-  **MF-307**  
ANGLED METAL CANOPY  
PAINTED TO MATCH ST-202
-  **MF-308**  
STOREROOM SYSTEM  
WALLING: CLEAN SOLAR  
GLASS: PPG IOLARON 60 (2)  
OPTIC + CL-GLASS



4040 N CENTRAL EXPY.,  
SUITE 720  
DALLAS, TEXAS 75204  
1 314.302.6864  
[www.mediamarketingfirm.com](http://www.mediamarketingfirm.com)

ISSUE DATE: 03/18/2025

FILE

**BIRCH - GRAND PRAIRIE RETAIL**  
3705 STATE HIGHWAY 161  
GRAND PRAIRIE, TEXAS

REVISIONS

FOR INFORMATION  
PURPOSES ONLY. NOT TO  
BE USED IN ANY CAPACITY  
FOR BIDDING, PERMITTING,  
OR CONSTRUCTION

SHEET NUMBER

**SP200**

SHEET NAME

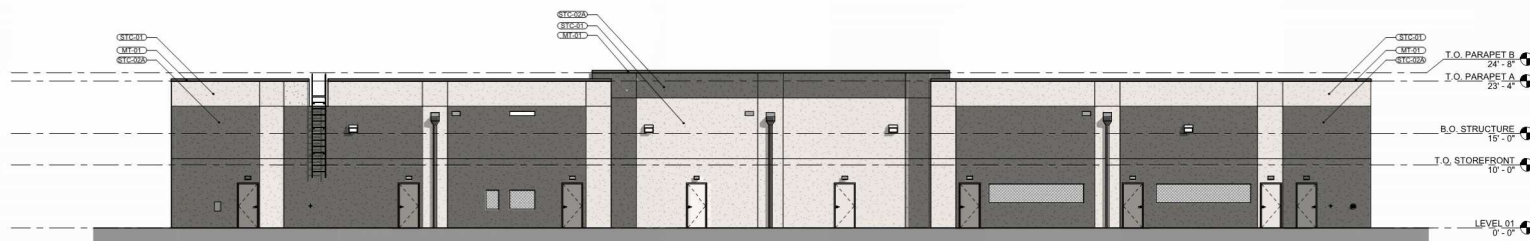
EXTERIOR  
ELEVATIONS -  
BLDG A



**4 EXTERIOR ELEV - BLDG A - NORTH**  
1/8" = 1'-0"



### 3 EXTERIOR ELEV - BLDG A - SOUTH



**2 EXTERIOR ELEV - BLDG A - WEST**  
1/8" = 1'-0"



**1 EXTERIOR ELEV - BLDG A - EAST**  
1/8" = 1'-0"

EXTERIOR WALLS					
WALL	TOTAL AREAS	STUCCO	BRICK	GLASS	DOOR
EAST	5,187 SF	2,277 SF = 44%	832 SF = 16%	2,078 SF = 40%	-
WEST	4,718 SF	4,529 SF = 96%	-	-	189 SF = 4%
NORTH	1,899 SF	1,147 SF = 60%	420 SF = 22%	332 SF = 18%	-
SOUTH	1,899 SF	1,132 SF = 60%	420 SF = 22%	347 SF = 18%	-
TOTAL	13,703 SF	9,085 SF = 66.3%	1,672 SF = 12.2%	2,797 SF = 20.1%	189 SF = 1.4%

WINDOWS AND CANOPIES		
	TOTAL LENGTHS	PERCENTAGE
BUILDING PERIMETER	552 FT	100%
CANOPIES	204 FT	40%
*WINDOWS	199 FT	36%

\*APPROXIMATELY 50 FT OF ARTWORK PROVIDED ON NORTH AND SOUTH FACADE FOR VARIANCE OF TOTAL WINDOW REQUIREMENT

EXTERIOR DESIGN  
NOTES

THE EXTERIOR ELEVATIONS ARE DEVELOPED WITH THE INTENT TO MEET THE FOLLOWING ITEMS INDICATED IN THE DOCUMENT "APPENDIX F MENU ITEMS CHECKLIST" UNDER THE BUILDING DESIGN SECTION, WHICH AT LEAST SIX MENU ITEMS ARE REQUIRED.

1. COLOR CONTRAST
2. CORNER TREATMENT
3. BUILDINGS AT KEY INTERSECTIONS
4. ROOF PROFILE VARIATION
5. ARTICULATION ELEMENTS
6. ENHANCED WINDOWS
7. CANOPY VARIATION
8. DESIGN ELEMENTS

## EXTERIOR MATERIAL BOARD



MS-01: THOMAS WAGGON VENEER  
NAME: GLEN GERTY  
STYLE: BUCK CITY BRICK - HEARTSTONE VE



STC-01: PORTLAND CEMENT PLASTER  
POLY-90: POLYURETHANE INSULATION



STC, 83, 8487-8490, 8492-8493.



SIC-03: PORTLAND CEMENT PLASTER  
COLOR: GW-4050 TRICORN BLACK

NOTE: STUCCO, COPING, METALS

[illegible]

10. *Journal of the American Medical Association*, 2000; 283: 2686-2692.



4040 N CENTRAL EXPY.,  
SUITE 720  
DALLAS, TEXAS 75204  
1.314.302.8864  
[www.modusarchitecture.com](http://www.modusarchitecture.com)

ISSUE DATE: 03.18.20

PLC

**BIRCH - GRAND PRAIRIE RETAIL**  
3705 STATE HIGHWAY 161  
GRAND PRAIRIE, TEXAS

REVISIONS

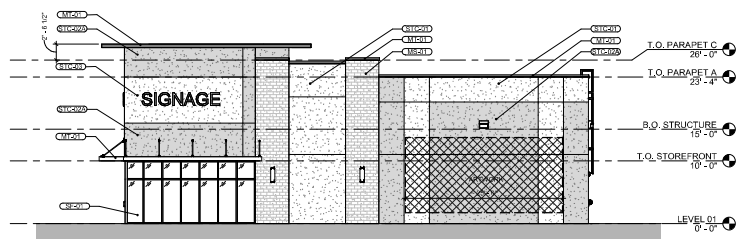
FOR INFORMATION  
PURPOSES ONLY. NOT TO  
BE USED IN ANY CAPACITY  
FOR BIDDING, PERMITTING,  
OR CONSTRUCTION

SHEET NUMBER

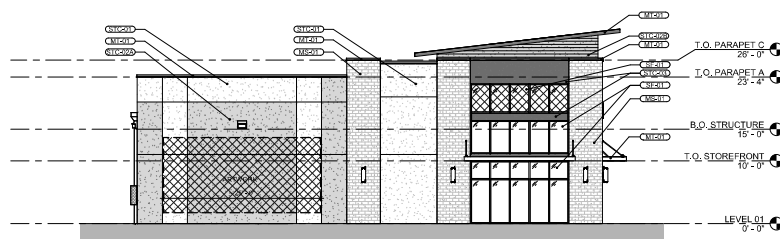
**SP200**

SHEET NAME

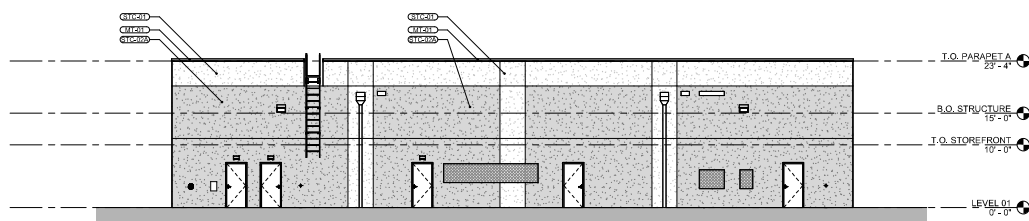
EXTERIOR  
ELEVATIONS -  
BLDG A



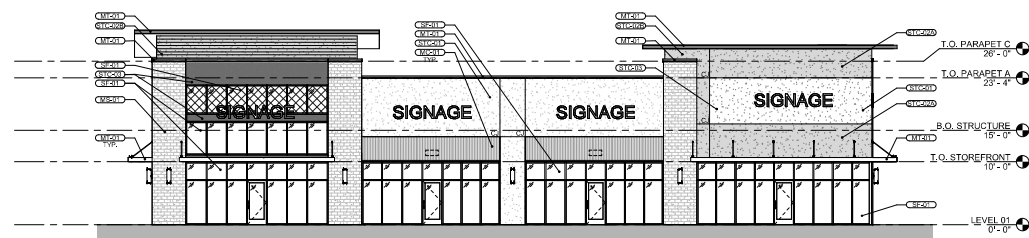
4 EXTERIOR ELEV - BLDG B - NORTH  
1/8" = 1'-0"



**3 EXTERIOR ELEV - BLDG B - SOUTH**  
1/8" = 1'-0"



**2 EXTERIOR ELEV - BLDG B - WEST**  
1/8" = 1'-0"



1 EXTERIOR ELEV - BLDG B - EAST  
1/8" = 1'-0"

EXTERIOR WALLS					
WALL	TOTAL AREAS	STUCCO	BRICK	GLASS	DOOR
EAST	3,316 SF	1,426 SF = 43%	693 SF = 21%	1,197 SF = 36%	-
WEST	2,633 SF	2,528 SF = 96%	-	-	105 SF = 4%
NORTH	1,877 SF	1,393 SF = 74%	277 SF = 15%	207 SF = 11%	-
SOUTH	1,899 SF	1,147 SF = 60%	420 SF = 22%	332 SF = 18%	-
TOTAL	9,725 SF	6,484 SF = 66.8%	1,390 SF = 14.3%	1,736 SF = 17.9%	105 SF = 1%

WINDOWS AND CANOPIES		
	TOTAL LENGTHS	PERCENTAGE
BUILDING PERIMETER	382 FT	100%
CANOPIES	145 FT	38%
*WINDOWS	131 FT	34%

\*APPROXIMATELY 50 FT OF ARTWORK PROVIDED ON NORTH AND SOUTH FACADE FOR VARIANCE OF TOTAL WINDOW REQUIREMENT

EXTERIOR DESIGN  
NOTES

THE EXTERIOR ELEVATIONS ARE DEVELOPED WITH THE INTENT TO MEET THE FOLLOWING ITEMS INDICATED IN THE DOCUMENT "APPENDIX F MENU ITEMS CHECKLIST" UNDER THE BUILDING DESIGN SECTION. WHICH AT LEAST SIX MENU ITEMS ARE REQUIRED.

1. COLOR CONTRAST
2. CORNER TREATMENT
3. BUILDINGS AT KEY INTERSECTIONS
4. ROOF PROFILE VARIATION
5. ARTICULATION ELEMENTS
6. ENHANCED WINDOWS
7. CANOPY VARIATION
8. DESIGN ELEMENTS

**EXTERIOR FINISH  
LEGEND**

[illegible]

4040 N CENTRAL EXPY.,  
SUITE 720  
DALLAS, TEXAS 75204  
1 314.302.6864  
[www.modularbillerhook.com](http://www.modularbillerhook.com)

ISSUE DATE: 03.18.2025

**File**

**BIRCH - GRAND PRAIRIE RETAIL**  
3705 STATE HIGHWAY 161  
GRAND PRAIRIE, TEXAS

REVISIONS

FOR INFORMATION  
PURPOSES ONLY. NOT TO  
BE USED IN ANY CAPACITY  
FOR BIDDING, PERMITTING,  
OR CONSTRUCTION

SHEET NUMBER

SP201

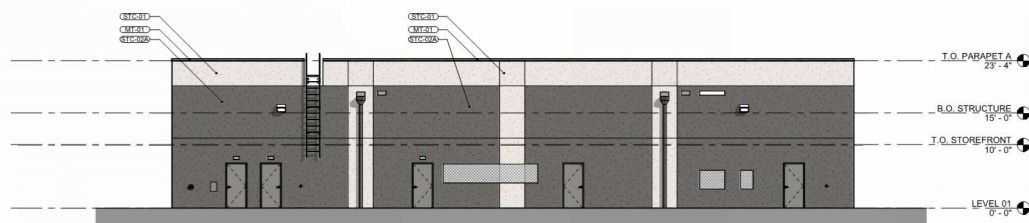
**SHEET NAME**  
**EXTERIOR**  
**ELEVATIONS -**  
**BLDG B**



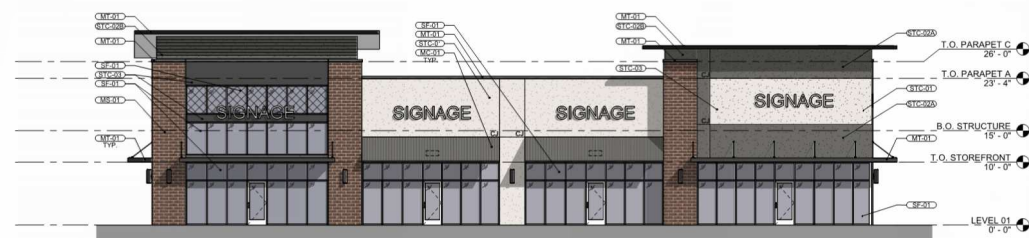
**4 EXTERIOR ELEV - BLDG B - NORTH**  
1/8" = 1'-0"



**3 EXTERIOR ELEV - BLDG B - SOUTH**  
1/8" = 1'-0"



**2 EXTERIOR ELEV - BLDG B - WEST**  
1/8" = 1'-0"



1 EXTERIOR ELEV - BLDG B - EAST  
1/8" = 1'-0"

EXTERIOR WALLS					
WALL	TOTAL AREAS	STUCCO	BRICK	GLASS	DOOR
EAST	3,316 SF	1,426 SF = 43%	693 SF = 21%	1,197 SF = 36%	-
WEST	2,633 SF	2,528 SF = 96%	-	-	105 SF = 4%
NORTH	1,877 SF	1,393 SF = 74%	277 SF = 15%	207 SF = 11%	-
SOUTH	1,899 SF	1,147 SF = 60%	420 SF = 22%	332 SF = 18%	-
TOTAL	9,725 SF	6,484 SF = 66.8%	1,390 SF = 14.3%	1,736 SF = 17.9%	105 SF = 1%

WINDOWS AND CANOPIES		
	TOTAL LENGTHS	PERCENTAGE
BUILDING PERIMETER	362 FT	100%
CANOPIES	145 FT	38%
*WINDOWS	131 FT	34%

\*APPROXIMATELY 50 FT OF ARTWORK PROVIDED ON NORTH AND SOUTH FACADE FOR VARIANCE OF TOTAL WINDOW REQUIREMENT

EXTERIOR DESIGN  
NOTES

THE EXTERIOR ELEVATIONS ARE DEVELOPED WITH THE INTENT TO MEET THE FOLLOWING ITEMS INDICATED IN THE DOCUMENT "APPENDIX F MENU ITEMS CHECKLIST" UNDER THE BUILDING DESIGN SECTION. WHICH AT LEAST SIX MENU ITEMS ARE REQUIRED.

1. COLOR CONTRAST
2. CORNER TREATMENT
3. BUILDINGS AT KEY INTERSECTIONS
4. ROOF PROFILE VARIATION
5. ARTICULATION ELEMENTS
6. ENHANCED WINDOWS
7. CANOPY VARIATION
8. DESIGN ELEMENTS

## EXTERIOR MATERIAL BOARD



MS-01: THINSET WOODGRY VENEER  
MANUF: GLEN-GERY  
STYLE: BIRCH CITY BRICK - HEARTHSTONE V



SIC-01: PORTLAND CEMENT PLASTER  
COLOR: SW 4063 PORCELAIN



STC-82: PORTLAND CEMENT PLASTER  
COLOR: SW 6707S GRAY SHINGLES



SIC-03: PORTLAND CEMENT PLASTER  
COLOR: SW 7025B TRICORN BLACK  
NVE-STUCCO COPING METALS



4040 N CENTRAL EXPY.,  
SUITE 720  
DALLAS, TEXAS 75204  
1 314.302.6864  
[www.modusarchitects.com](http://www.modusarchitects.com)

ISSUE DATE: 03.18.2025

**BIRCH - GRAND PRAIRIE RETAIL**  
3705 STATE HIGHWAY 161  
GRAND PRAIRIE, TEXAS

REVISIONS

---

---

---

---

---

FOR INFORMATION  
PURPOSES ONLY. NOT TO  
BE USED IN ANY CAPACITY  
FOR BIDDING, PERMITTING,  
OR CONSTRUCTION

SHEET NUMBER

SP201

**SHEET NAME**  
**EXTERIOR**  
**ELEVATIONS -**  
**BLDG B**