



**BUILDING DESIGN STANDARD**

**PRIMARY ELEVATION:**

**SECTION 4.2.a. TWO MASONRY ACCENT MATERIAL**

**SECTION 4.2.b. 35% GLAZING**

**SECTION 4.2.c. AWNING**

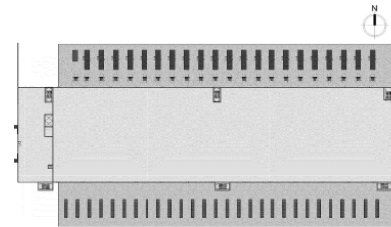
**SECTION 4.2.f. ACCENT LIGHTING**

**SECTION 4.2.h. WING WALL**

**SECONDARY ELEVATIONS:**

**SECTION 4.4.a. MASONRY ACCENT MATERIAL**

**SECTION 4.4.d. ARTICULATION WITH AT LEAST TWO AREAS OF VERTICAL OFFSET**

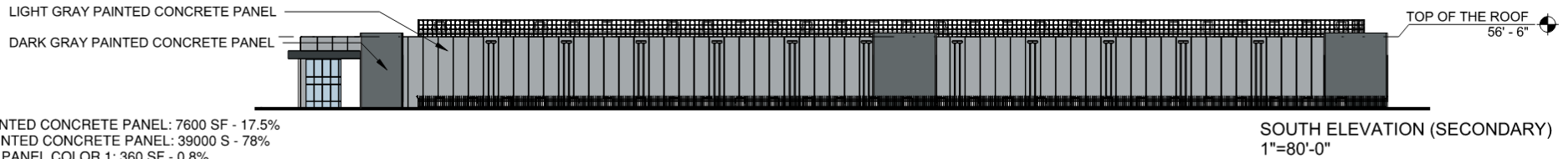


# 72 MW DC -PERSPECTIVE

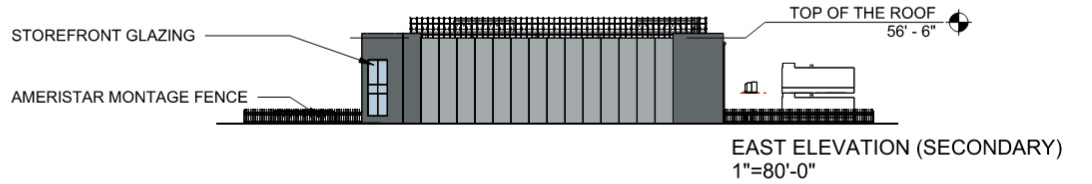
1" = 80'-0"

03/03/2025 • 25015.0000

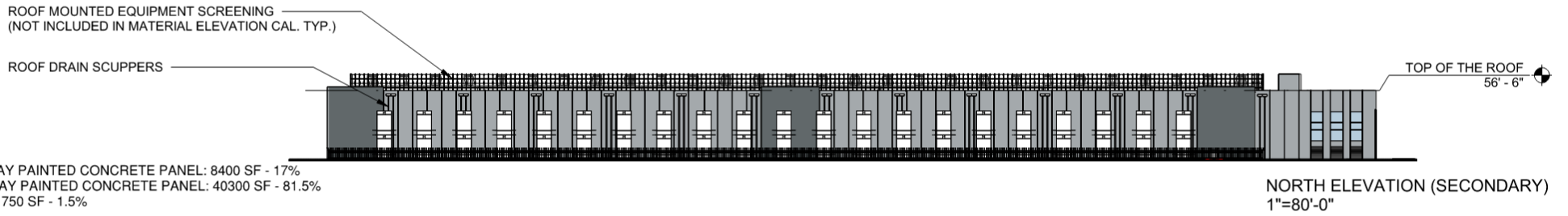
CORGAN 



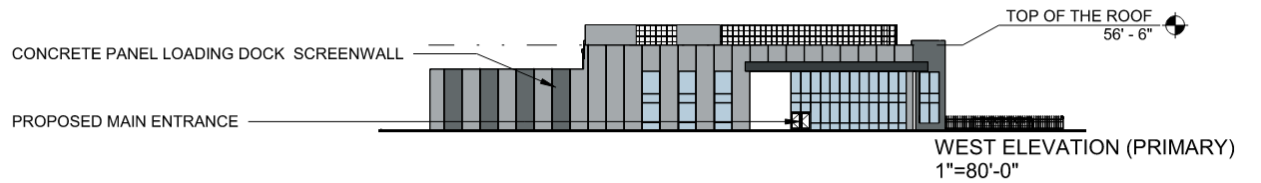
- DARK GRAY PAINTED CONCRETE PANEL: 7600 SF - 17.5%
- LIGHT GRAY PAINTED CONCRETE PANEL: 39000 S - 78%
- ACCENT METAL PANEL COLOR 1: 360 SF - 0.8%
- ACCENT METAL PANEL COLOR 2: 600 SF - 1.5%
- GLAZING: 1110 - 2.2%



- DARK GRAY PAINTED CONCRETE PANEL: 3745 SF - 28%
- LIGHT GRAY PAINTED CONCRETE PANEL: 9460 SF - 68.5%
- GLAZING: 490 SF - 3.5%



- DARK GRAY PAINTED CONCRETE PANEL: 8400 SF - 17%
- LIGHT GRAY PAINTED CONCRETE PANEL: 40300 SF - 81.5%
- GLAZING: 750 SF - 1.5%



- DARK GRAY PAINTED CONCRETE PANEL: 725 SF - 5.1%
- LIGHT GRAY PAINTED CONCRETE PANEL: 6630 SF - 47.3%
- ACCENT METAL PANEL COLOR 1: 760 SF - 5.4%
- ACCENT METAL PANEL COLOR 2: 1080 SF - 7.2%
- GLAZING: 4800 SF - 35%

# 72 MW DC - ELEVATIONS

1" = 80'-0"

03/03/2025 • 25015.0000

CORGAN ■