

TRACT NAME	INSTRUMENT/DOCUMENT NO.	ACERAGE	SAVE & EXCEPT
PRAIRIE RIDGE NORTH, LP	1900288	260.053	28.853
PRA PRAIRIE RIDGE, LP	2005-10528 (3500/964)	477.960	70.844
PRA PRAIRIE RIDGE, LP	2005-10525 (3500/941)	206.438	27.636
PRA PRAIRIE RIDGE, LP	2005-10526 (3500/951)	1.000	0.000

945.451 MEASURED
127.333 SAVE & EXCEPT
818.118 NET ACRES

SAVE & EXCEPT
19.955 ACRES
869,222 SQFT

SAVE & EXCEPT
36.534 ACRES
1,591,416 SQFT

PRAIRIE RIDGE NORTH, L.P.
INSTRUMENT NO. 1900288
DRECT

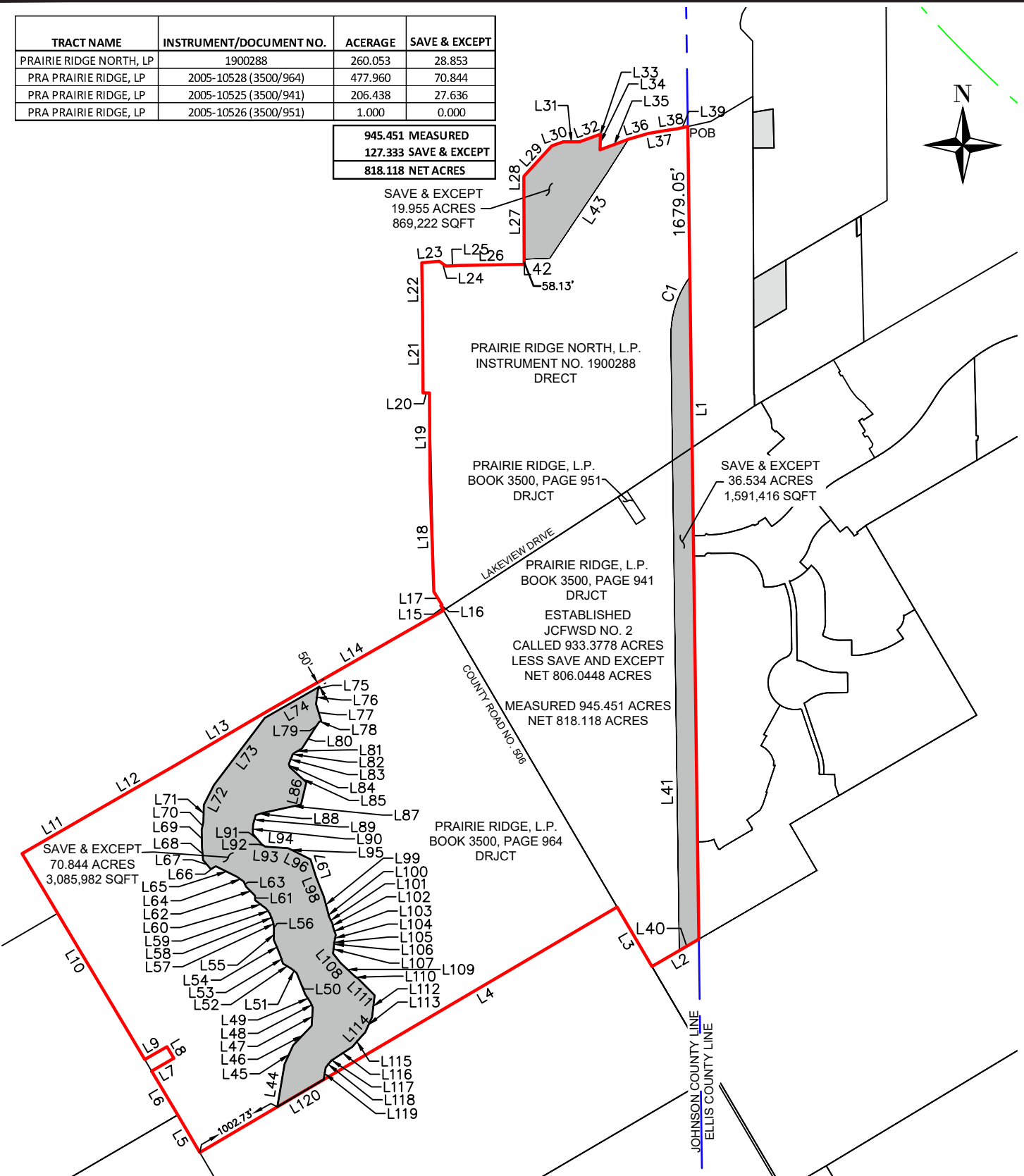
PRAIRIE RIDGE, L.P.
BOOK 3500, PAGE 951
DRJCT

PRAIRIE RIDGE, L.P.
BOOK 3500, PAGE 941
DRJCT

ESTABLISHED
JCFWSD NO. 2
CALLED 933.3778 ACRES
LESS SAVE AND EXCEPT
NET 806.0448 ACRES

MEASURED 945.451 ACRES
NET 818.118 ACRES

PRAIRIE RIDGE, L.P.
BOOK 3500, PAGE 964
DRJCT



**YAZEL PEEBLES &
ASSOCIATES LLC**
TBPELS 10194022
P.O. Box 210097
Bedford, TX 76095
817.268.3316
ypassociates.com
info@ypassociates.com

EXHIBIT 806.0448 ACRES

ESTABLISHED JCFWSD NO. 2 CALLED 933.3778 ACRES
(AS ESTABLISHED BY VOLUME 3766, PAGE 558) Johnson County, Texas
LESS SAVE AND EXCEPT 36.534 ACRES, 19.955 ACRES & 70.844 ACRES

This document was prepared under 22 TAC §663.21, does not reflect the results of an on the ground survey, and is not to be used to convey or establish interests in real property except those rights and interests implied or established by the creation or reconfiguration of the boundary of the political subdivision for which it was prepared.

LINE TABLE

NO.	BEARING	LENGTH	DEED RECORD/MEASURED	CURRENT JCFWSD #2 BOOK 3766, PAGE 558
L1	S00°46'38"E	9062.28'	MEASURED	9077.61'
L2	S59°48'50"W	604.65'	MEASURED	537.29'
L3	N30°19'05"W	767.89'	MEASURED	767.82'
L4	S59°32'15"W	5397.83'	MEASURED	MULTIPLE BEARINGS/DISTANCES
L5	N30°17'41"W	485.03'	MEASURED	1053.81'
L6	N30°48'56"W	568.69'	MEASURED	----
L7	N59°55'51"E	285.88'	MEASURED	291.69'
L8	N30°44'47"W	149.99'	MEASURED	150.00'
L9	S59°59'52"W	286.07'	MEASURED	291.67'
L10	N30°47'31"W	2672.35'	MEASURED	2672.24'
L11	N59°59'45"E	884.63'	MEASURED	888.13'
L12	N60°06'05"E	1077.88'	MEASURED	1077.88'
L13	N59°33'57"E	1233.53'	MEASURED	1233.53'
L14	N60°12'34"E	2230.06'	MEASURED	MULTIPLE BEARINGS/DISTANCES
L15	N31°00'52"W	61.64'	MEASURED	63.16'
L16	N59°55'47"E	15.00'	RECORD TR 4	15.00'
L17	N31°23'32"W	171.88'	RECORD TR 4	186.66'
L18	N02°01'56"W	1228.34'	RECORD TR 4	1231.01'
L19	N00°18'29"W	988.86'	RECORD TR 4	974.52'
L20	N89°43'57"W	72.01'	RECORD TR 4	68.28'
L21	N00°22'19"W	857.67'	RECORD TR 4	1451.56'
L22	N00°49'54"W	592.96'	RECORD TR 4	----
L23	N84°59'15"E	196.81'	RECORD TR 4	198.82'
L24	S54°14'51"E	90.61'	RECORD TR 4	90.60'
L25	N87°40'49"E	145.87'	RECORD TR 4	145.00'
L26	N88°59'50"E	726.70'	RECORD TR 4	727.38'
L27	N00°13'18"W	953.43'	RECORD TR 4	953.45'
L28	N00°14'28"E	29.02'	RECORD TR 4	29.00'
L29	N42°32'03"E	459.80'	RECORD TR 4	459.85'
L30	N70°31'53"E	134.99'	RECORD TR 4	135.15'
L31	S89°52'36"E	182.09'	RECORD TR 4	182.03'
L32	N69°56'36"E	246.00'	RECORD TR 4	246.00'
L33	S06°44'04"E	11.98'	RECORD TR 4	----
L34	S01°11'53"W	161.33'	RECORD TR 4	173.16'
L35	N69°34'21"E	338.72'	RECORD TR 4	338.86'
L36	N73°59'44"E	234.63'	RECORD TR 4	234.63'
L37	N80°15'19"E	213.33'	RECORD TR 4	213.33'
L38	N81°59'10"E	104.35'	RECORD TR 4	100.94'
L39	N77°26'33"E	123.81'	MEASURED	49.45'

CURVE TABLE

NO.	DELTA	RADIUS	LENGTH	CHORD BEARING	CHORD
C1	36°41'51"	1110.00'	710.95'	N17°34'17"E	698.86'



YAZEL PEEBLES & ASSOCIATES LLC

TBPELS 10194022
 P.O. Box 210097 817.268.3316
 Bedford, TX 76095 ypassociates.com
info@ypassociates.com

EXHIBIT 806.0448 ACRES

ESTABLISHED JCFWSD NO. 2 CALLED 933.3778 ACRES
 (AS ESTABLISHED BY VOLUME 3766, PAGE 558) Johnson County, Texas
 LESS SAVE AND EXCEPT 36.534 ACRES, 19.955 ACRES & 70.844 ACRES

This document was prepared under 22 TAC §663.21, does not reflect the results of an on the ground survey, and is not to be used to convey or establish interests in real property except those rights and interests implied or established by the creation or reconfiguration of the boundary of the political subdivision for which it was prepared.

LINE TABLE		
NO.	BEARING	LENGTH
L1	S00°46'38"E	9062.28'
L2	S59°48'50"W	604.65'
L3	N30°19'05"W	767.89'
L4	S59°32'15"W	3795.10'
L5	N30°17'41"W	485.03'
L6	N30°48'56"W	568.69'
L7	N59°55'51"E	285.88'
L8	N30°44'47"W	149.99'
L9	S59°59'52"W	286.07'
L10	N30°47'31"W	2672.35'
L11	N59°59'45"E	884.63'
L12	N60°06'05"E	1077.88'
L13	N59°33'57"E	1233.53'
L14	N60°12'34"E	2230.06'
L15	N31°00'52"W	61.64'
L16	N59°55'47"E	15.00'
L17	N31°23'32"W	171.88'
L18	N02°01'56"W	1228.34'
L19	N00°18'29"W	988.86'
L20	N89°43'57"W	72.01'
L21	N00°22'19"W	857.67'
L22	N00°49'54"W	592.96'
L23	N84°59'15"E	196.81'
L24	S54°14'51"E	90.61'
L25	N87°40'49"E	145.87'
L26	N88°59'50"E	726.70'
L27	N00°13'18"W	953.43'
L28	N00°14'28"E	29.02'
L29	N42°32'03"E	459.80'
L30	N70°31'53"E	134.99'

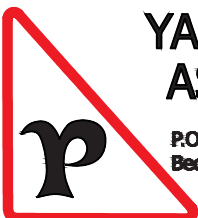
LINE TABLE		
NO.	BEARING	LENGTH
L31	S89°52'36"E	182.09'
L32	N69°56'36"E	246.00'
L33	S06°44'04"E	11.98'
L34	S01°11'53"W	161.33'
L35	N69°34'21"E	338.72'
L36	N73°59'44"E	234.63'
L37	N80°15'19"E	213.33'
L38	N81°59'10"E	104.35'
L39	N77°26'33"E	123.81'
L40	S59°48'50"W	604.65'
L41	N00°46'38"W	6843.92'
L42	N88°10'25"E	284.90'
L43	N33°54'25"E	1108.25'
L44	N09°40'01"E	485.00'
L45	N24°30'50"E	229.13'
L46	N43°22'14"E	299.59'
L47	N03°33'33"E	203.90'
L48	N23°24'57"W	61.43'
L49	N33°10'58"W	107.75'
L50	N22°02'02"W	256.18'
L51	N50°17'33"W	77.87'
L52	N59°08'09"W	106.56'
L53	N18°32'36"W	108.04'
L54	N22°31'23"W	179.30'
L55	N00°41'47"E	113.08'
L56	N01°01'53"W	36.02'
L57	N11°05'52"W	51.64'
L58	N21°20'41"W	97.16'
L59	N36°08'31"W	68.64'
L60	N52°46'30"W	156.40'

LINE TABLE		
NO.	BEARING	LENGTH
L61	N00°07'38"E	49.89'
L62	N44°59'55"W	141.61'
L63	N24°39'46"W	62.15'
L64	N53°57'26"W	91.08'
L65	N63°30'14"W	264.67'
L66	S59°28'03"W	65.08'
L67	N40°10'09"W	134.04'
L68	N04°33'22"W	137.78'
L69	N01°17'29"W	201.12'
L70	N12°16'36"E	89.38'
L71	N01°43'08"E	190.30'
L72	N27°07'00"E	247.63'
L73	N37°09'31"E	938.20'
L74	N60°07'18"E	702.93'
L75	S23°48'24"W	47.22'
L76	S07°36'11"W	153.61'
L77	S17°21'52"E	196.88'
L78	S61°17'57"W	28.93'
L79	S34°06'41"W	95.35'
L80	S32°16'45"W	253.88'
L81	S59°23'52"W	111.83'
L82	S33°16'39"W	17.43'
L83	S22°29'06"W	108.71'
L84	S15°58'35"E	37.15'
L85	S47°48'48"E	250.69'
L86	S13°26'07"W	257.00'
L87	S77°50'29"W	425.64'
L88	S73°15'38"W	91.66'
L89	S16°01'20"W	108.74'
L90	S01°58'32"W	104.49'

LINE TABLE		
NO.	BEARING	LENGTH
L91	S40°17'17"E	158.42'
L92	S57°30'53"E	40.55'
L93	S85°17'19"E	32.61'
L94	S86°04'35"E	225.32'
L95	S63°51'32"E	88.24'
L96	S63°20'05"E	190.58'
L97	S17°15'55"E	205.74'
L98	S21°45'05"E	236.10'
L99	S14°37'28"E	185.28'
L100	S14°55'44"E	50.51'
L101	S27°31'08"E	80.22'
L102	S09°15'53"E	43.20'
L103	S19°32'33"E	87.99'
L104	S10°47'13"W	76.23'
L105	S07°09'46"W	23.12'
L106	S07°09'46"W	13.14'
L107	S07°09'46"W	99.52'
L108	S38°59'54"E	135.16'
L109	S46°50'58"E	211.79'
L110	S53°28'59"E	49.71'
L111	S44°47'02"E	261.74'
L112	S06°42'20"W	245.06'
L113	S24°15'48"W	187.15'
L114	S43°06'13"W	60.25'
L115	S40°58'03"W	154.31'
L116	S56°51'50"W	256.12'
L117	S52°58'01"W	33.34'
L118	S38°33'05"W	89.56'
L119	S09°40'01"W	137.29'
L120	S59°32'15"W	600.00'

EXHIBIT 806.0448 ACRES

ESTABLISHED JCFWSD NO. 2 CALLED 933.3778 ACRES
 (AS ESTABLISHED BY VOLUME 3766, PAGE 558) Johnson County, Texas
 LESS SAVE AND EXCEPT 36.534 ACRES, 19.955 ACRES & 70.844 ACRES



**YAZEL PEEBLES &
ASSOCIATES LLC**

TBPELS 10194022
 P.O. Box 210097 817.268.3316
 Bedford, TX 76095 ypassociates.com
 info@ypassociates.com

This document was prepared under 22 TAC §663.21, does not reflect the results of an on the ground survey, and is not to be used to convey or establish interests in real property except those rights and interests implied or established by the creation or reconfiguration of the boundary of the political subdivision for which it was prepared.

METES AND BOUNDS DESCRIPTION:

933.3778 Called Acres as established by:

Current record description of Johnson County Fresh Water Supply District No. 2 as established and described in Book 3766 Page 558, Official Public Records, Johnson County, Texas

BEING a 933.3778 acre tract of land located ill the Joseph Stewart Survey, Abstract Number 754, the J. H. Working Survey, Abstract Number 897, and the T. Gardner Survey, Abstract Number 303, Johnson County, Texas, and being part of certain tracts of land conveyed to Simon D. Cannon and wife, Karal Kay Cannon as recorded in Volume 1550, Page 910, Deed Records Johnson County, Texas and Volume 859, Page 790, Deed Record, Ellis County, Texas, Richard J. Bontke and wife, Sandra S. Bontke as recorded in Volume 1550, Page 922 and Volume 720, Page 790, Deed Records Johnson County, Texas and Phillip N. Smauder and Jennie Smaudcr Pope as recorded ill Book 2637, Page 549, Deed Records Johnson County, Texas and being more particularly described as follows:

BEGINNING at a point on the East line of the Johnson-Ellis County line and at a point in Mountain Creek;

THENCE South 00°47'39" East, a distance of 9077.61 feet to a point;

THENCE South 59°47'49" West, a distance of 537.29 feet to a point on County Road 506;

THENCE North 30°19'09" West, along County Road 506, a distance of 767.82 feet to a point;

THENCE South 59°22'08" West, a distance of 2847.39 feet to a point;

THENCE South 59°43'26" West, a distance of 1163.15 feet to a point;

THENCE South 59°43'23" West, a distance of 810.04 feet to a point;

THENCE South 59°45'46" West, a distance of 580.44 feet to a point;

THENCE North 30°44'12" West, a distance of 1053.81 feet to a point;

THENCE North 59°59'5 1" East, a distance of 291.69 feet to a point;

THENCE North 30°44'47" West, a distance of 150.00 feet to a point;

THENCE South 59°59'52" West, a distance of 291.67 feet to a point;

THENCE North 30°44'12" West, a distance of 2,672.24 feet to a point;

THENCE North 59°59'42" East, a distance of 888.13 feet to a point;

THENCE North 60°05'44" East, a distance of 1 077.88 feet to a point;

THENCE North 59°33'36" East, a distance of 1233.53 feet to a point;

THENCE North 60°12'19" East, a distance of 123.67 feet to a point;

THENCE North 60°12'38" East, a distance of 2106.18 feet to a point;

THENCE North 30°03'26" West, a distance of 63.16 feet to a point;

THENCE North 60°00'00" East, a distance of 15.00 feet to a point;

THENCE North 31°59'15" West, a distance of 186.66 feet to a point;

THENCE North 01°41'28" West, a distance of 1231.01 feet to a point

THENCE North 00°00'00" East, a distance of 974.52 feet to a point;

THENCE North 89°39'16" West, a distance of 68.28 feet to a point;

THENCE North 00°25'43" West, a distance of 1451.56 fret to a point;

THENCE North 85°09'40" East, a distance of 198.82 feet to a point;

THENCE South 54°06'50" East, a distance of 90.60 feet to a point;

THENCE North 87°45'30" East, a distance of 145.00 feet to a point;

THENCE North 89°04'31" East, a distance of 727.38 feet to a point;

THENCE North 00°10'48" West, a distance of 953.45 feet to a point;

THENCE North 01°35'04" East, a distance of 29.00 feet to a point;

THENCE North 42°36'35" East, a distance of 459.85 feet to a point;

THENCE North 70°36'25" East, a distance of 135.15 feet to a point;

THENCE South 89°47'03" East, a distance of 182.03 feet to a point;

THENCE North 70002'09" East, a distance of 246.00 feet to a point;

THENCE South 00042'20" West, a distance of 173.16 feet to a point to a point in Mountain Creek;

THENCE with the meanderings of said creek, the following courses and distances:

North 69°47'31" East, a distance of 338.86 feet to a point;

North 74°04'25" East, a distance of 234.63 feet to a point;

North 80°20'00" East, a distance of 213.33 feet to a point;

North 82°03'5 1" East, a distance of 100.94 feet to a point;

North 77°31'14" East, a distance of 49.45 feet to the PLACE OF BEGINNING and containing 40,657,938 square feet or 933.3778 acres of land more or less.



**YAZEL PEEBLES &
ASSOCIATES LLC**

P.O. Box 210097
Bedford, TX 76095

TBPELS 10194022

817.268.3316

ypassociates.com

info@ypassociates.com

2021-140-000

PAGE 4 OF 6

EXHIBIT 806.0448 ACRES

ESTABLISHED JCFWSD NO. 2 CALLED 933.3778 ACRES

(AS ESTABLISHED BY VOLUME 3766, PAGE 558) Johnson County, Texas
LESS SAVE AND EXCEPT 36.534 ACRES, 19.955 ACRES & 70.844 ACRES

This document was prepared under 22 TAC §663.21, does not reflect the results of an on the ground survey, and is not to be used to convey or establish interests in real property except those rights and interests implied or established by the creation or reconfiguration of the boundary of the political subdivision for which it was prepared.

METES AND BOUNDS DESCRIPTION:

SAVE & EXCEPT:

BEING a 36.534 acre tract of land situated in the I. Gardner Survey, Abstract 303, J. Stewart Survey, Abstract No. 754 and the J. Working Survey, Abstract No. 897, Johnson County, Texas and being a portion of a tract of land described in Special Warranty Deed to Prairie Ridge North LP tract recorded in Instrument Number 1900288 of the Official Public Records, Ellis County, Texas (OPRECT) and being a portion of a tract of land described in General Warranty Deed to PRA Prairie Ridge, L.P. tracts recorded in Document Number 2005-10525 (Book 3500, Page 941 of the Official Public Records, Johnson County, Texas (OPRJCT) and being more particularly described as follows:

BEGINNING at a point of intersection of the Johnson County, Ellis County line with the North right-of-way line of Prairie Ridge Boulevard, a variable width right-of-way, recorded in Instrument No. 2230143 recorded in Plat Records Ellis County Texas (PRECT);

THENCE South 0°46'38" East, along said county line, a distance of 4,443.97 feet to a point in the South line of the Johnson County Freshwater Supply District No. 2 (JCFWSD No. 2) as established in Volume 3766, Page 558 OPRJCT;

THENCE South 59°48'50" West, along said JCFWSD No. 2 line, a distance of 252.54 feet to a point in the proposed West right-of-way line of Goodland Parkway;

THENCE North 0°46'38" West, along proposed West right-of-way line of Goodland Parkway, a distance of 6,843.92 feet to the beginning of a curve to the right having a radius of 1110.00 feet and a chord bearing and distance of North 17° 34' 17" East a distance of 698.86 feet;

THENCE Northerly along said curve to the right through a central angle of 36°41'51" an arc distance of 710.95 feet to a point on the Johnson County, Ellis County line;

THENCE South 0°46'38" East, along said county line, a

distance of 2,939.27 feet to the POINT OF BEGINNING and containing 36.534 acres of land, more or less.

SAVE & EXCEPT:

BEING a 19.955 acre tract of land situated in the W. Gardner Survey, Abstract Number 303, Johnson County, Texas, and being a portion of tract of land described in Special Warranty Deed to Prairie Ridge North LP recorded in Instrument Number 1900288, Deed Records, Ellis County, Texas (DRECT), said 19.955 acre tract being more particularly described as follows:

COMMENCING at an inner ell corner on the North line of said Prairie Ridge North Tract;

THENCE with the North line of said Prairie Ridge North Tract; the following ten (10) courses and distances:

1. North 00° 13' 19" West for a distance of 58.13 feet to the POINT OF BEGINNING of the herein described tract;
2. North 00° 13' 19" West for a distance of 895.30 feet to a point;
3. North 00° 14' 28" East for a distance of 29.02 feet to a point at the most Northerly Northwest corner of said Prairie Ridge North Tract;
4. North 42° 32' 03" East for a distance of 459.80 feet to a point;
5. North 70° 31' 53" East for a distance of 134.99 feet to a point;
6. South 89° 52' 36" East for a distance of 182.09 feet to a point;
7. North 69° 56' 36" East for a distance of 246.00 feet to a point;
8. South 06° 44' 04" East for a distance of 11.98 feet to a point;
9. South 01° 11' 53" West for a distance of 161.33 feet to a point;
10. North 69° 34' 21" East for a distance of 338.72 feet to a point;

THENCE South 32° 31' 55" West for a distance of 484.24 feet to a point;

THENCE South 33° 54' 25" West for a distance of 1108.25 feet to a point;

THENCE South 88° 10' 25" West a distance of 284.90 feet to the POINT OF BEGINNING and containing 19.955 acres of land, more or less.



YAZEL PEEBLES & ASSOCIATES LLC

P.O. Box 210097
Bedford, TX 76095

TBPELS 10194022

817.268.3316

ypassociates.com

info@ypassociates.com

EXHIBIT 806.0448 ACRES

ESTABLISHED JCFWSD NO. 2 CALLED 933.3778 ACRES

(AS ESTABLISHED BY VOLUME 3766, PAGE 558) Johnson County, Texas
LESS SAVE AND EXCEPT 36.534 ACRES, 19.955 ACRES & 70.844 ACRES

This document was prepared under 22 TAC §663.21, does not reflect the results of an on the ground survey, and is not to be used to convey or establish interests in real property except those rights and interests implied or established by the creation or reconfiguration of the boundary of the political subdivision for which it was prepared.

METES AND BOUNDS DESCRIPTION:

SAVE & EXCEPT:

BEING a 70.844 acre tract of land situated in the Allen Larrison Survey, Abstract 497, Johnson County, Texas and being part of a tract of land described in Special Warranty Deed to PRA Prairie Ridge LP record in Book 3500, Page 964 of the Official Public Records, Johnson County, Texas (OPRJCT) and being more particularly described as follows:

COMMENCING at the southwest corner or said PRA Prairie Ridge Tract;

THENCE North 59°32'15" East, along the South line of said PRA Prairie Ridge tract, a distance of 1002.73 feet to the southwest corner of said 70.829 acre tract and to the **POINT OF BEGINNING**;

THENCE Over and across said Prairie Ridge Tract the following seventy-six (76) courses and distances:

1. North 09° 40' 01" East a distance of 485.00 feet to a point;
2. North 24° 30' 50" East a distance of 229.13 feet to a point;
3. North 43° 22' 14" East a distance of 299.59 feet to a point;
4. North 03° 33' 33" East a distance of 203.90 feet to a point;
5. North 23° 24' 57" West a distance of 61.43 feet to a point;
6. North 33° 10' 58" West a distance of 107.75 feet to a point;
7. North 22° 02' 02" West a distance of 256.18 feet to a point;
8. North 50° 17' 33" West a distance of 77.87 feet to a point;
9. North 59° 08' 09" West a distance of 106.56 feet to a point;
10. North 18° 32' 36" West a distance of 108.04 feet to a point;
11. North 22° 31' 23" West a distance of 179.30 feet to a point;
12. North 00° 41' 47" East a distance of 113.08 feet to a point;
13. North 01° 01' 53" West a distance of 36.02 feet to a point;
14. North 11° 05' 52" West a distance of 51.64 feet to a point;
15. North 21° 20' 41" West a distance of 97.16 feet to a point;
16. North 36° 08' 31" West a distance of 68.64 feet to a point;
17. North 52° 46' 30" West a distance of 156.40 feet to a point;
18. North 00° 07' 38" East a distance of 49.89 feet to a point;
19. North 44° 59' 55" West a distance of 141.61 feet to a point;
20. North 24° 39' 46" West a distance of 62.15 feet to a point;
21. North 53° 57' 26" West a distance of 91.08 feet to a point;
22. North 63° 30' 14" West a distance of 264.67 feet to a point;
23. South 59° 28' 03" West a distance of 65.08 feet to a point;
24. North 40° 10' 09" West a distance of 134.04 feet to a point;
25. North 04° 33' 22" West a distance of 137.78 feet to a point;
26. North 01° 17' 29" West a distance of 201.12 feet to a point;
27. North 12° 16' 36" East a distance of 89.38 feet to a point;
28. North 01° 43' 08" East a distance of 190.30 feet to a point;
29. North 27° 07' 00" East a distance of 247.63 feet to a point;
30. North 37° 09' 31" East a distance of 938.20 feet to a point;
31. North 60° 07' 18" East a distance of 702.93 feet to a point;
32. South 23° 48' 24" West a distance of 47.22 feet to a point;

33. South 07° 36' 11" West a distance of 153.61 feet to a point;
34. South 17° 21' 52" East a distance of 196.88 feet to a point;
35. South 61° 17' 57" West a distance of 28.93 feet to a point;
36. South 34° 06' 41" West a distance of 95.35 feet to a point;
37. South 32° 16' 45" West a distance of 253.88 feet to a point;
38. South 59° 23' 52" West a distance of 111.83 feet to a point;
39. South 33° 16' 39" West a distance of 17.43 feet to a point;
40. South 22° 29' 06" West a distance of 108.71 feet to a point;
41. South 15° 58' 35" East a distance of 37.15 feet to a point;
42. South 47° 48' 48" East a distance of 250.69 feet to a point;
43. South 13° 26' 07" West a distance of 257.00 feet to a point;
44. South 77° 50' 29" West a distance of 425.64 feet to a point;
45. South 73° 15' 38" West a distance of 91.66 feet to a point;
46. South 16° 01' 20" West a distance of 108.74 feet to a point;
47. South 01° 58' 32" West a distance of 104.49 feet to a point;
48. South 40° 17' 17" East a distance of 158.42 feet to a point;
49. South 57° 30' 53" East a distance of 40.55 feet to a point;
50. South 85° 17' 19" East a distance of 32.61 feet to a point;
51. South 86° 04' 35" East a distance of 225.32 feet to a point;
52. South 63° 51' 32" East a distance of 88.24 feet to a point;
53. South 63° 20' 05" East a distance of 190.58 feet to a point;
54. South 17° 15' 55" East a distance of 205.74 feet to a point;
55. South 21° 45' 05" East a distance of 236.10 feet to a point;
56. South 14° 37' 28" East a distance of 185.28 feet to a point;
57. South 14° 55' 44" East a distance of 50.51 feet to a point;
58. South 27° 31' 08" East a distance of 80.22 feet to a point;
59. South 09° 15' 53" East a distance of 43.20 feet to a point;
60. South 19° 32' 33" East a distance of 87.99 feet to a point;
61. South 10° 47' 13" West a distance of 76.23 feet to a point;
62. South 07° 09' 46" East a distance of 23.12 feet to a point;
63. South 07° 09' 46" East a distance of 13.14 feet to a point;
64. South 07° 09' 46" East a distance of 99.52 feet to a point;
65. South 38° 59' 54" East a distance of 135.16 feet to a point;
66. South 46° 50' 58" East a distance of 211.79 feet to a point;
67. South 53° 28' 59" East a distance of 49.71 feet to a point;
68. South 44° 47' 02" East a distance of 261.74 feet to a point;
69. South 06° 42' 20" West a distance of 245.06 feet to a point;
70. South 24° 15' 48" West a distance of 187.15 feet to a point;
71. South 43° 06' 13" West a distance of 60.25 feet to a point;
72. South 40° 58' 03" West a distance of 154.31 feet to a point;
73. South 56° 51' 50" West a distance of 256.12 feet to a point;
74. South 52° 58' 01" West a distance of 33.34 feet to a point;
75. South 38° 33' 05" West a distance of 89.56 feet to a point;
76. South 09° 40' 01" West a distance of 137.29 feet to a point in the South line of said PRA Prairie Ridge tract;

THENCE South 59° 32' 15" West a distance of 600.00 feet to the **POINT OF BEGINNING** and containing 70.844 acres of land, more or less.

EXHIBIT 806.0448 ACRES

ESTABLISHED JCFWSD NO. 2 CALLED 933.3778 ACRES
(AS ESTABLISHED BY VOLUME 3766, PAGE 558) Johnson County, Texas
LESS SAVE AND EXCEPT 36.534 ACRES, 19.955 ACRES & 70.844 ACRES

This document was prepared under 22 TAC §663.21, does not reflect the results of an on the ground survey, and is not to be used to convey or establish interests in real property except those rights and interests implied or established by the creation or reconfiguration of the boundary of the political subdivision for which it was prepared.



**YAZEL PEEBLES &
ASSOCIATES LLC**

P.O. Box 210097
Bedford, TX 76095

TBPELS 10194022

817.268.3316

ypassociates.com

info@ypassociates.com