

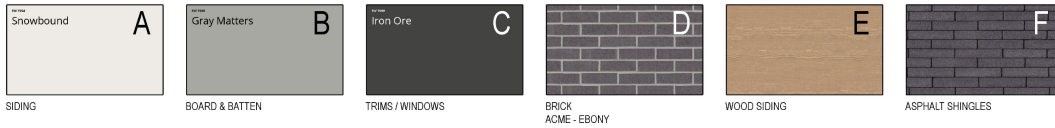


**LEFT SIDE ELEVATION**

**STREET FRONT ELEVATION  
(WINDOW PERCENTAGE 28%)**

MATERIAL PERCENTAGE LEFT ELEVATION	
BRICK	32%
FIBER CEMENT SIDING (PAINTED & WOOD TONE)	58%
FIBER CEMENT BOARD & BATTEN	8%
FIBER CEMENT BOARD	2%
<b>TOTAL</b>	<b>100%</b>

MATERIAL PERCENTAGE STREET FRONT ELEVATION	
BRICK	26%
FIBER CEMENT SIDING (PAINTED & WOOD TONE)	45%
FIBER CEMENT BOARD & BATTEN	21%
FIBER CEMENT BOARD	8%
<b>TOTAL</b>	<b>100%</b>



**CASE # SUP-25-05-0017**

<b>HUMPHREYS</b> <small>5339 Alpha Rd., Suite 300, Dallas, TX 75248   972.791.9939   www.humphreys.com</small>	CLIENT <b>FOXFERM HOLDINGS</b>	PROJECT INFO <b>GRAND PRAIRIE GRAND PRAIRIE, TX</b>	ISSUE <b>SD</b>	SHEET DESCRIPTION <b>ELEVATIONS</b>	DATE <b>May 5, 2025</b> DRAWN BY <b>JIMENA ARECHAVALETA</b>	JOB NUMBER <b>25005</b>	SHEET <b>A413</b>
	<small>This architectural work, including but not limited to its design, plans, drawings, renderings, specifications, derivatives of the work, and associated materials is/are protected by copyright law. ©</small>						

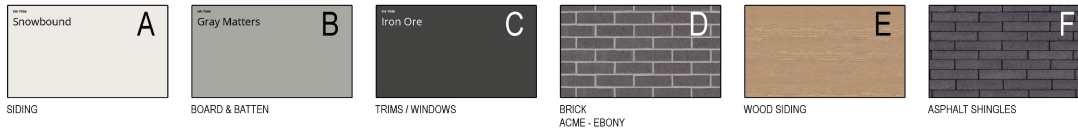


**RIGHT SIDE ELEVATION**

**GARAGE ELEVATION**

MATERIAL PERCENTAGE RIGHT ELEVATION	
BRICK	32%
FIBER CEMENT SIDING (PAINTED & WOOD TONE)	58%
FIBER CEMENT BOARD & BATTEN	8%
FIBER CEMENT BOARD	2%
<b>TOTAL</b>	<b>100%</b>

MATERIAL PERCENTAGE GARAGE ELEVATION	
BRICK	26%
FIBER CEMENT SIDING (PAINTED & WOOD TONE)	57%
FIBER CEMENT BOARD & BATTEN	11%
FIBER CEMENT BOARD	6%
<b>TOTAL</b>	<b>100%</b>



**CASE # SUP-25-05-0017**

<b>HUMPHREYS</b> <small>538 Alpha Rd., Suite 300, Dallas, TX 75248   972.701.9638   www.humphreys.com</small>	CLIENT <b>FOXFERN HOLDINGS</b>	PROJECT INFO <b>GRAND PRAIRIE</b> GRAND PRAIRIE, TX	ISSUE <b>SD</b>	SHEET DESCRIPTION <b>ELEVATIONS</b>	DATE <b>May 3, 2025</b> DRAWN BY <b>JIMENA ARECHAVALA</b>	JOB NUMBER <b>25005</b>	SHEET <b>A414</b>
	<small>This architectural work, including but not limited to its design, plans, drawings, renderings, specifications, derivatives of the work, and associated materials is/are protected by copyright law. ©</small>						

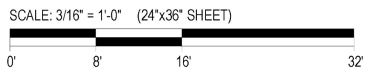
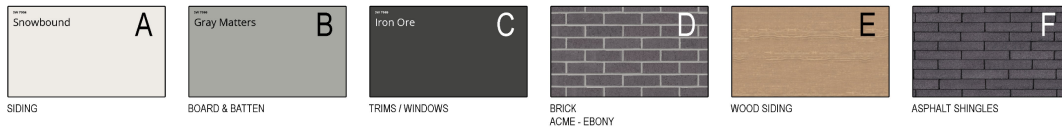


**SOUTH ELEVATION**

MATERIAL PERCENTAGE SOUTH ELEVATION	
BRICK	45%
FIBER CEMENT SIDING (PAINTED & WOOD TONE)	14%
FIBER CEMENT BOARD & BATTEN	41%
<b>TOTAL</b>	<b>100%</b>

**EAST ELEVATION**

MATERIAL PERCENTAGE EAST ELEVATION	
BRICK	14%
FIBER CEMENT SIDING (PAINTED & WOOD TONE)	13%
FIBER CEMENT BOARD & BATTEN	73%
<b>TOTAL</b>	<b>100%</b>



**CASE # SUP-25-05-0017**

 <small>5339 Alpha Rd., Suite 300, Dallas, TX 75240   972.701.8636   www.humphreys.com</small>	CLIENT <b>FOXFERN HOLDINGS</b>	PROJECT INFO <b>GRAND PRAIRIE</b> <b>GRAND PRAIRIE, TX</b>	ISSUE <b>SD</b>	SHEET DESCRIPTION <b>CLUBHOUSE</b> <b>ELEVATIONS</b>	DATE <b>May 7, 2025</b> DRAWN BY <b>JIMENA ARECHAVALETA</b>	JOB NUMBER <b>25005</b>	SHEET <b>A812</b>
	<small>This architectural work, including but not limited to its design, plans, drawings, renderings, specifications, derivatives of the work, and associated materials is/are protected by copyright law. ©</small>						

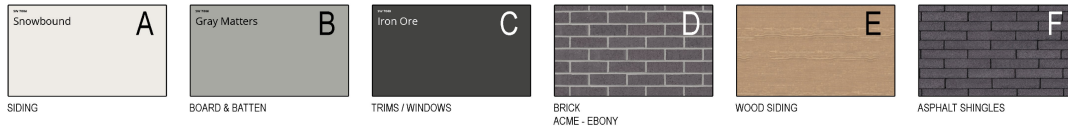


**NORTH ELEVATION**

MATERIAL PERCENTAGE NORTH ELEVATION	
BRICK	44%
FIBER CEMENT SIDING (PAINTED & WOOD TONE)	45%
FIBER CEMENT BOARD & BATTEN	11%
<b>TOTAL</b>	<b>100%</b>

**WEST ELEVATION**

MATERIAL PERCENTAGE WEST ELEVATION	
BRICK	78%
FIBER CEMENT BOARD & BATTEN	22%
<b>TOTAL</b>	<b>100%</b>



SCALE: 3/16" = 1'-0" (24"x36" SHEET)



**CASE # SUP-25-05-0017**

 <small>538 Alpha Rd., Suite 300, Dallas, TX 75248   (972) 701-9638   www.humphreys.com</small>	CLIENT <b>FOXFERN HOLDINGS</b>	PROJECT INFO <b>GRAND PRAIRIE</b> <small>GRAND PRAIRIE, TX</small>	ISSUE <b>SD</b>	SHEET DESCRIPTION <b>CLUBHOUSE ELEVATIONS</b>	DATE <b>May 7, 2025</b> DRAWN BY <b>JIMENA ARECHAVELETA</b>	JOB NUMBER <b>25005</b>	SHEET <b>A813</b>
	<small>This architectural work, including but not limited to its design, plans, drawings, renderings, specifications, derivatives of the work, and associated materials is/are protected by copyright law. ©</small>						



**CASE # SUP-25-05-0017**

<p><b>HUMPHREYS</b>  <small>5339 Alpha Rd., Suite 300, Dallas, TX 75241   972.701.9536   www.humphreys.com</small></p>	<p>CLIENT  <b>FOXERN HOLDINGS</b></p>	<p>PROJECT INFO  <b>GRAND PRAIRIE</b>  <small>GRAND PRAIRIE, TX</small></p>	<p>ISSUE  <b>SD</b></p>	<p>SHEET DESCRIPTION  <b>ARCHITECTURAL RENDERING</b></p>	<p>DATE  <b>May 5, 2025</b>          DRAWN BY  <b>JIMENA ARECHAVALETA</b></p>	<p>JOB NUMBER  <b>25005</b></p> <p>SHEET  <b>A100</b></p>
--	---	---	-----------------------------	--	---	---

This architectural work, including but not limited to its design, plans, drawings, renderings, specifications, derivatives of the work, and associated materials is/are protected by copyright law. ©