



F	SERIES-3000 - THERMAL BREAK	139'-3 1/8"
	DRIVE-THRU WINDOW & DOOR	- 8' - 8"
	TOTAL STOREFRONT PROVIDED:	148' - 5"
	TOTAL LF CANDORY REQ.:	74' - 3"
	TOTAL LF CANDORY PROVIDED:	134' - 7"

MATERIAL LEGEND - FRONT

MFR. / MATERIAL	SERIES / COLOR	% SURFACE
A NICHHA - FIBER CEMENT PANEL	AWP 3030 - SANDSTONE - AUTUMN BROWN	21%
B NICHHA - FIBER CEMENT PANEL	AWP 3030 - ROUGHSAWN - ESPRESSO	17%
C NICHHA - FIBER CEMENT PANEL	AWP 1818 - CANYON BRICK - SHALE BROWN	18%
D NICHHA - FIBER CEMENT PANEL	AWP 1818 - TUFBLOCK - DARK CLOVE	7%
E NICHHA - FIBER CEMENT PANEL	AWP 1818 - TUFBLOCK - KEYSTONE GRAY	8%
F OLDCASTLE - STOREFRONT	SERIES-3000 - THERMAL BREAK	17%
H METAL-ERA - METAL FASCIA	ANCHOR-TITE - CARDINAL RED	9%
K CITADEL - METAL CLAD PANEL	ENVELOPE 2000 - DARK BRONZE	3%

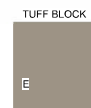
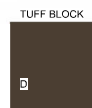
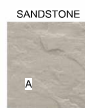
1 ELEVATION @ FRONT ENTRY
1/4" = 1'-0"



MATERIAL LEGEND - REAR

MFR. / MATERIAL	SERIES / COLOR	% SURFACE
A NICHHA - FIBER CEMENT PANEL	AWP 3030 - SANDSTONE - AUTUMN BROWN	12%
B NICHHA - FIBER CEMENT PANEL	AWP 3030 - ROUGHSAWN - ESPRESSO	37%
C NICHHA - FIBER CEMENT PANEL	AWP 1818 - CANYON BRICK - SHALE BROWN	22%
D NICHHA - FIBER CEMENT PANEL	AWP 1818 - TUFBLOCK - DARK CLOVE	5%
E NICHHA - FIBER CEMENT PANEL	AWP 1818 - TUFBLOCK - KEYSTONE GRAY	13%
F OLDCASTLE - STOREFRONT	SERIES-3000 - THERMAL BREAK	1%
H METAL-ERA - METAL FASCIA	ANCHOR-TITE - CARDINAL RED	6%
K CITADEL - METAL CLAD PANEL	ENVELOPE 2000 - DARK BRONZE	4%

2 ELEVATION @ REAR DRIVE-THRU
1/4" = 1'-0"



CEMENT PANELS: NICHHA SELECTIONS

OTHER FACADE SELECTIONS:

- F ALUMINUM STOREFRONT
- G DECORATIVE BRONZE METAL/COATINGS
- H RED FASCIA AT PARAPET CAP AND SCREEN CAP
- J BRONZE STANDING SEAM METAL ROOF AT EXTERIOR PATIO
- K MISC. METAL CLADDING

EXPIRATION DATE: 03/31/24



MATERIAL LEGEND - LEFT

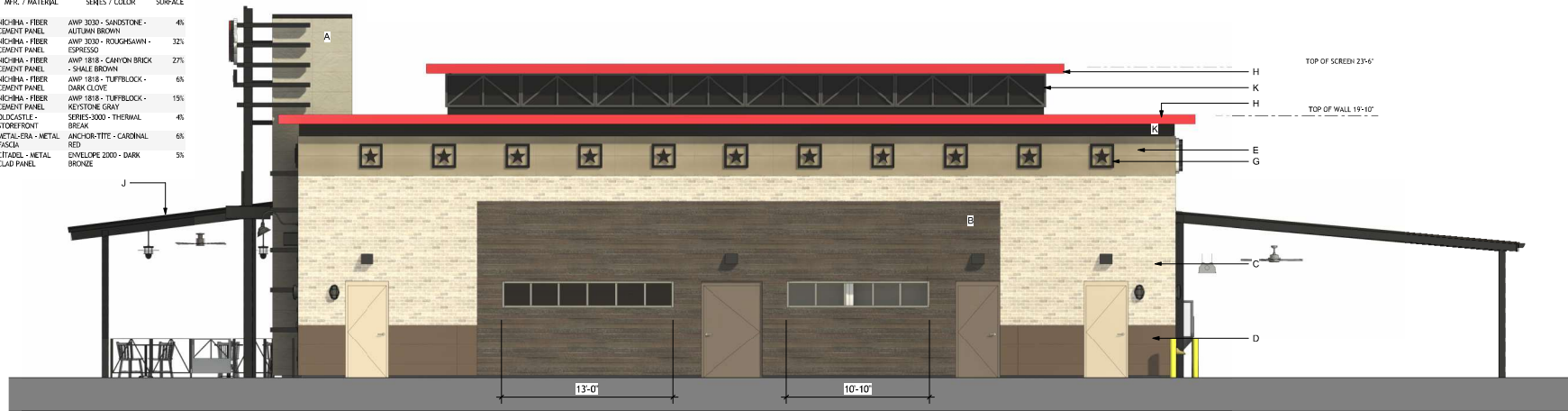
MFR. / MATERIAL	SERIES / COLOR	% SURFACE
A NICHHA - FIBER CEMENT PANEL	AWP 3000 - SANDSTONE - AUTUMN BROWN	4%
C NICHHA - FIBER CEMENT PANEL	AWP 1818 - CANYON BRICK - SHALE BROWN	30%
D NICHHA - FIBER CEMENT PANEL	AWP 1818 - TUFFBLOCK - DARK CLOVE	16%
E NICHHA - FIBER CEMENT PANEL	AWP 1818 - TUFFBLOCK - KEYSTONE GRAY	14%
F OLDCASTLE - STOREFRONT	SERIES 3000 - THERMAL BREAK	24%
H METAL-ERA - METAL FASCIA	ANCHOR-TITE - CARDINAL RED	6%
K CITADEL - METAL CLAD PANEL	ENVELOPE 2000 - DARK BRONZE	5%



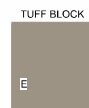
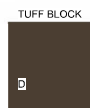
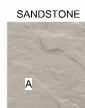
1 ELEVATION @ LEFT (DINING) SIDE
1/4" = 1'-0"

MATERIAL LEGEND - RIGHT

MFR. / MATERIAL	SERIES / COLOR	% SURFACE
A NICHHA - FIBER CEMENT PANEL	AWP 3000 - SANDSTONE - AUTUMN BROWN	4%
B NICHHA - FIBER CEMENT PANEL	AWP 3000 - ROUGHSAWN - ESPRESSO	32%
C NICHHA - FIBER CEMENT PANEL	AWP 1818 - CANYON BRICK - SHALE BROWN	27%
D NICHHA - FIBER CEMENT PANEL	AWP 1818 - TUFFBLOCK - DARK CLOVE	6%
E NICHHA - FIBER CEMENT PANEL	AWP 1818 - TUFFBLOCK - KEYSTONE GRAY	15%
F OLDCASTLE - STOREFRONT	SERIES 3000 - THERMAL BREAK	4%
H METAL-ERA - METAL FASCIA	ANCHOR-TITE - CARDINAL RED	6%
K CITADEL - METAL CLAD PANEL	ENVELOPE 2000 - DARK BRONZE	5%



2 ELEVATION @ RIGHT (KITCHEN) SIDE
1/4" = 1'-0"



CEMENT PANELS: NICHHA SELECTIONS

OTHER FACADE SELECTIONS:

- F ALUMINUM STOREFRONT
- G DECORATIVE BRONZE METAL/COATINGS
- H RED FASCIA AT PARAPET CAP AND SCREEN CAP
- J BRONZE STANDING SEAM METAL ROOF AT EXTERIOR PATIO
- K MISC. METAL CLADDING

EXPIRATION DATE: 03/31/24

