



Cavalry Construction & Restoration

Insured: Grand Prairie Municipal Airport
Property: 3116 S Great SW Pkwy
Grand Prairie, TX 75052

Claim Rep.: Tyler Gillette

Estimator: Tyler Gillette

Claim Number: 1981607

Policy Number: N/A

Type of Loss: Fire

Date Contacted: 5/1/2024 9:37 AM

Date of Loss: 4/12/2024 11:11 PM

Date Inspected: 5/3/2024 9:00 AM

Date Received: 5/2/2024 1:12 PM

Date Entered: 5/3/2024 8:36 PM

Price List: TXDF8X_MAY24
Restoration/Service/Remodel

Estimate: 2697457V1



2697457V1
2697457V1

DESCRIPTION	QTY	REMOVE	REPLACE	TAX	TOTAL
391. Price Adjustment	1.00 EA	0.00	-10,000.00	0.00	-10,000.00
Total: 2697457V1				0.00	-10,000.00

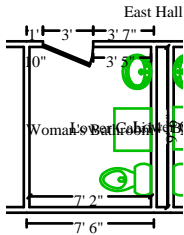
Building
Building

DESCRIPTION	QTY	REMOVE	REPLACE	TAX	TOTAL
1. Commercial Supervision / Project Management - per hour	24.00 HR	0.00	80.84	0.00	1,940.16
2. Hazardous Waste/Mold Cleaning-Supervisory/Admin- per hour	40.00 HR	0.00	83.93	0.00	3,357.20
3. Dumpster load - Approx. 30 yards, 5-7 tons of debris	6.00 EA	623.57	0.00	0.00	3,741.42
4. Add for personal protective equipment (hazardous cleanup) -- 15 workers for 10 days	150.00 EA	0.00	13.95	0.00	2,092.50
5. Respirator cartridge - HEPA & vapor & gas (per pair) -- 15 workers for 10 days	50.00 EA	0.00	38.12	0.00	1,906.00
6. Respirator - Full face - multi-purpose resp. (per day) -- 15 workers for 5 days (1 week)	75.00 DA	0.00	7.61	0.00	570.75
7. Respirator - Half face - multi-purpose resp. (per day) -- 15 workers for 5 days (1 week)	75.00 DA	0.00	1.67	0.00	125.25
8. Scissor lift - 26' platform height (per week) -- 4 units for 2 weeks -- Pricing based on quote provided by Sunbelt Rentals	8.00 WK	0.00	587.62	0.00	4,700.96
9. Generator - 35-90KW (per week - 24 hour) - no monitoring -- The power needed requires a 36kw generator	2.00 WK	0.00	2,140.08	0.00	4,280.16
10. Fuel surcharge - Generator -- 2 weeks of fuel with 3gl per hr of consumption	1,008.00 EA	0.00	3.39	0.00	3,417.12
11. Generator temporary power cable (per day) -- 3 units for 2 weeks	42.00 DA	0.00	30.00	0.00	1,260.00
12. Power distribution box - below 100 amp (per week) -- 3 units for 2 weeks -- Based on quote provided by Sunbelt Rentals	6.00 WK	0.00	167.71	0.00	1,006.26

CONTINUED - Building

DESCRIPTION	QTY	REMOVE	REPLACE	TAX	TOTAL
13. Rental equipment delivery / mobilization (Bid item)	1.00 EA	0.00	2,081.44	0.00	2,081.44
-- Based on quote provided by Sunbelt Rentals					
14. Equipment setup, take down, and monitoring (hourly charge)	22.00 HR	0.00	70.61	0.00	1,553.42
15. Equipment decontamination charge - per piece of equipment	22.00 EA	0.00	43.89	0.00	965.58
16. Clean soot/fire debris & deodorize all ducts and air handlers	1.00 EA	0.00	9,356.40	0.00	9,356.40
--Based on a quote by Mr. Duct Cleaner					
Total: Building				0.00	42,354.62

**1st Floor
Common Areas**



Woman's Bathroom

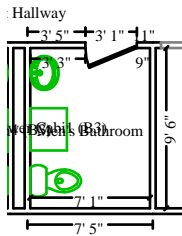
Height: 15' 3"

484.42 SF Walls	68.14 SF Ceiling
552.56 SF Walls & Ceiling	68.14 SF Floor
7.57 SY Flooring	30.36 LF Floor Perimeter
33.33 LF Ceil. Perimeter	

DESCRIPTION	QTY	REMOVE	REPLACE	TAX	TOTAL
Door					
		2' 11 11/16" X 8' 7/16"		Opens into EAST_HALLWA2	
23. Remove damaged suspended ceiling tile and bag for disposal	68.14 SF	0.53	0.00	0.00	36.11
356. Remove Suspended ceiling grid - 2' x 4'	68.14 SF	0.20	0.00	0.00	13.63
26. Tear out and bag damaged insulation	552.56 SF	0.90	0.00	0.00	497.30
27. Clean the walls and ceiling	552.56 SF	0.00	0.51	0.00	281.81
28. Clean floor	68.14 SF	0.00	0.59	0.00	40.20
29. Clean light bar	1.00 EA	0.00	26.38	0.00	26.38
30. Clean sink	1.00 EA	0.00	18.65	0.00	18.65
31. Clean sink faucet	1.00 EA	0.00	13.87	0.00	13.87
32. Clean handicap grab bar	2.00 EA	0.00	14.80	0.00	29.60
33. Clean door hardware	1.00 EA	0.00	9.49	0.00	9.49
34. Clean door (per side)	2.00 EA	0.00	10.27	0.00	20.54

CONTINUED - Woman's Bathroom

DESCRIPTION	QTY	REMOVE	REPLACE	TAX	TOTAL
35. Clean outlet or switch	2.00 EA	0.00	4.97	0.00	9.94
36. Clean toilet paper dispenser	1.00 EA	0.00	10.11	0.00	10.11
37. Clean toilet	1.00 EA	0.00	31.32	0.00	31.32
38. Clean suspended ceiling grid	68.14 SF	0.00	0.44	0.00	29.98
Totals: Woman's Bathroom				0.00	1,068.93



Men's Bathroom

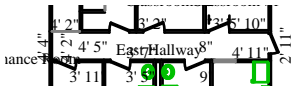
Height: 15' 3"

480.34 SF Walls	67.05 SF Ceiling
547.39 SF Walls & Ceiling	67.05 SF Floor
7.45 SY Flooring	30.06 LF Floor Perimeter
33.10 LF Ceil. Perimeter	

DESCRIPTION	QTY	REMOVE	REPLACE	TAX	TOTAL
Door 3' 9/16" X 8' 7/16" Opens into EAST_HALLWA2					
39. Remove damaged suspended ceiling tile and bag for disposal	67.05 SF	0.53	0.00	0.00	35.54
357. Remove Suspended ceiling grid - 2' x 4'	67.05 SF	0.20	0.00	0.00	13.41
42. Tear out and bag damaged insulation	547.39 SF	0.90	0.00	0.00	492.65
43. Clean the walls and ceiling	547.39 SF	0.00	0.51	0.00	279.17
44. Clean floor	67.05 SF	0.00	0.59	0.00	39.56
45. Clean light bar	1.00 EA	0.00	26.38	0.00	26.38
46. Clean sink	1.00 EA	0.00	18.65	0.00	18.65
47. Clean sink faucet	1.00 EA	0.00	13.87	0.00	13.87
48. Clean handicap grab bar	2.00 EA	0.00	14.80	0.00	29.60
49. Clean door hardware	1.00 EA	0.00	9.49	0.00	9.49
50. Clean door (per side)	2.00 EA	0.00	10.27	0.00	20.54
51. Clean outlet or switch	2.00 EA	0.00	4.97	0.00	9.94
52. Clean toilet paper dispenser	1.00 EA	0.00	10.11	0.00	10.11
53. Clean toilet	1.00 EA	0.00	31.32	0.00	31.32
54. Clean suspended ceiling grid	67.05 SF	0.00	0.44	0.00	29.50
Totals: Men's Bathroom				0.00	1,059.73

East Hallway

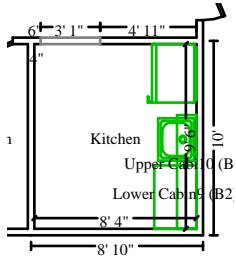
Height: 15' 3"



824.56 SF Walls	130.27 SF Ceiling
954.83 SF Walls & Ceiling	130.27 SF Floor
14.47 SY Flooring	44.26 LF Floor Perimeter
65.30 LF Ceil. Perimeter	

Door	2' 11 3/8" X 8' 4"	Opens into TESTING_ROOM
Missing Wall	4' 1 9/16" X 15' 3"	Opens into SOUTH_HALLWA
Door	2' 11 1/4" X 8' 2 1/16"	Opens into UTILITY_ROO2
Door	2' 11 11/16" X 8' 7/16"	Opens into WOMANS_BATH2
Door	3' 9/16" X 8' 7/16"	Opens into MENS_BATHRO2
Missing Wall	3' 11/16" X 15' 3"	Opens into KITCHEN2
Door	2' 11 5/16" X 8' 7/16"	Opens into Exterior
Door	3' 7/16" X 8' 2 1/16"	Opens into CLASSROOM_1
Door	3' 1 15/16" X 8' 2 7/16"	Opens into CLASSROOM_2

DESCRIPTION	QTY	REMOVE	REPLACE	TAX	TOTAL
55. Hydroxyl generator - odor counteractant - 3 optics -- 1 unit for 2 weeks (weekly rate)	10.00 DA	0.00	232.75	0.00	2,327.50
56. Dehumidifier (per 24 hr period)-110-159 ppd - No monitor. -- 1 unit for 1 week (weekly rate)	5.00 EA	0.00	122.22	0.00	611.10
57. Neg. air fan/Air scrub.-Large (per 24 hr period)-No monit. -- 1 unit for 1 week (weekly rate)	5.00 DA	0.00	118.06	0.00	590.30
339. Remove damaged suspended ceiling tile and bag for disposal	130.27 SF	0.53	0.00	0.00	69.04
340. Tear out and bag damaged insulation	954.83 SF	0.90	0.00	0.00	859.35
62. Clean the walls and ceiling	954.83 SF	0.00	0.51	0.00	486.96
63. Clean floor	130.27 SF	0.00	0.59	0.00	76.86
64. Clean light bar	3.00 EA	0.00	26.38	0.00	79.14
65. Clean door hardware	1.00 EA	0.00	9.49	0.00	9.49
66. Clean exterior door (per side)	1.00 EA	0.00	20.36	0.00	20.36
359. Clean suspended ceiling grid	130.27 SF	0.00	0.44	0.00	57.32
Totals: East Hallway				0.00	5,187.42



Kitchen

Height: 15' 3"

496.01 SF Walls	78.80 SF Ceiling
574.80 SF Walls & Ceiling	78.80 SF Floor
8.76 SY Flooring	32.52 LF Floor Perimeter
32.52 LF Ceil. Perimeter	

Missing Wall

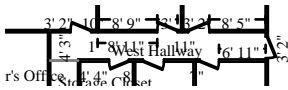
3' 11/16" X 15' 3"

Opens into EAST_HALLWA2

DESCRIPTION	QTY	REMOVE	REPLACE	TAX	TOTAL
341. Remove damaged suspended ceiling tile and bag for disposal	78.80 SF	0.53	0.00	0.00	41.76
358. Remove Suspended ceiling grid - 2' x 4'	78.80 SF	0.20	0.00	0.00	15.76
342. Tear out and bag damaged insulation	574.80 SF	0.90	0.00	0.00	517.32
72. Clean the walls and ceiling	574.80 SF	0.00	0.51	0.00	293.15
73. Clean floor	78.80 SF	0.00	0.59	0.00	46.49
74. Refrigerator - Remove & reset	1.00 EA	0.00	61.23	0.00	61.23
75. Clean refrigerator - exterior	1.00 EA	0.00	27.71	0.00	27.71
76. Clean cabinetry - lower - inside and out	6.00 LF	0.00	21.12	0.00	126.72
77. Clean cabinetry - upper - inside and out	6.00 LF	0.00	21.12	0.00	126.72
78. Cabinet - lower (base) unit - Detach	6.00 LF	0.00	25.53	0.00	153.18
79. Clean light bar	1.00 EA	0.00	26.38	0.00	26.38
80. Clean sink	1.00 EA	0.00	18.65	0.00	18.65
81. Clean sink faucet	1.00 EA	0.00	13.87	0.00	13.87
82. Clean door hardware	1.00 EA	0.00	9.49	0.00	9.49
83. Clean door (per side)	2.00 EA	0.00	10.27	0.00	20.54
84. Clean outlet or switch	3.00 EA	0.00	4.97	0.00	14.91
85. Clean suspended ceiling grid	78.80 SF	0.00	0.44	0.00	34.67
Totals: Kitchen				0.00	1,548.55

West Hallway

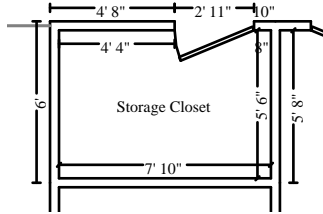
Height: 15' 3"



866.28 SF Walls	130.99 SF Ceiling
997.27 SF Walls & Ceiling	130.99 SF Floor
14.55 SY Flooring	47.00 LF Floor Perimeter
68.42 LF Ceil. Perimeter	

Door	2' 10 1/2" X 8' 6 3/8"	Opens into BRIEFING_ROO
Door	3' 2 7/16" X 8' 8 3/4"	Opens into Exterior
Door	3' 1 7/8" X 8' 4"	Opens into SAMANTHAS_O
Door	3' 1/4" X 8' 1 5/8"	Opens into AUTUMNS_OFF
Door	3' 7/8" X 7' 11 1/4"	Opens into JUSTINS_OFF
Missing Wall	4' 1 3/4" X 15' 3"	Opens into SOUTH_HALLWA
Door	2' 11 3/8" X 8' 1 1/4"	Opens into STORAGE_CLO2
Door	3' 1 11/16" X 8' 1 1/4"	Opens into CLASSROOM_3

DESCRIPTION	QTY	REMOVE	REPLACE	TAX	TOTAL
97. Hydroxyl generator - odor counteractant - 3 optics -- 1 unit for 2 weeks (weekly rate)	10.00 DA	0.00	232.75	0.00	2,327.50
98. Dehumidifier (per 24 hr period)-110-159 ppd - No monitor. -- 1 unit for 1 week (weekly rate)	5.00 EA	0.00	122.22	0.00	611.10
99. Neg. air fan/Air scrub.-Large (per 24 hr period)-No monit. -- 1 unit for 1 week (weekly rate)	5.00 DA	0.00	118.06	0.00	590.30
345. Remove damaged suspended ceiling tile and bag for disposal	130.99 SF	0.53	0.00	0.00	69.42
346. Tear out and bag damaged insulation	997.27 SF	0.90	0.00	0.00	897.54
104. Clean the walls and ceiling	997.27 SF	0.00	0.51	0.00	508.61
105. Clean floor	130.99 SF	0.00	0.59	0.00	77.28
106. Clean light bar	3.00 EA	0.00	26.38	0.00	79.14
107. Clean door hardware	1.00 EA	0.00	9.49	0.00	9.49
108. Clean exterior door (per side)	1.00 EA	0.00	20.36	0.00	20.36
109. Clean suspended ceiling grid	130.99 SF	0.00	0.44	0.00	57.64
Totals: West Hallway				0.00	5,248.38



Storage Closet

Height: 15' 3"

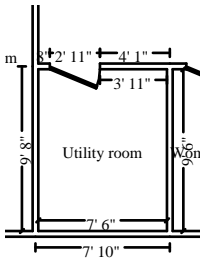
383.85 SF Walls	43.27 SF Ceiling
427.12 SF Walls & Ceiling	43.27 SF Floor
4.81 SY Flooring	23.79 LF Floor Perimeter
26.74 LF Ceil. Perimeter	

Door

2' 11 3/8" X 8' 1 1/4"

Opens into WEST_HALLWAY

DESCRIPTION	QTY	REMOVE	REPLACE	TAX	TOTAL
347. Remove damaged suspended ceiling tile and bag for disposal	43.27 SF	0.53	0.00	0.00	22.93
361. Remove Suspended ceiling grid - 2' x 4'	43.27 SF	0.20	0.00	0.00	8.65
348. Tear out and bag damaged insulation	427.12 SF	0.90	0.00	0.00	384.41
114. Clean the walls and ceiling	427.12 SF	0.00	0.51	0.00	217.83
115. Clean light bar	1.00 EA	0.00	26.38	0.00	26.38
116. Clean door hardware	1.00 EA	0.00	9.49	0.00	9.49
117. Clean door (per side)	2.00 EA	0.00	10.27	0.00	20.54
118. Clean outlet or switch	2.00 EA	0.00	4.97	0.00	9.94
119. Clean shelving - wood	48.00 LF	0.00	1.28	0.00	61.44
120. Clean suspended ceiling grid	43.27 SF	0.00	0.44	0.00	19.04
121. Clean floor	43.27 SF	0.00	0.59	0.00	25.53
Totals: Storage Closet				0.00	806.18



Utility room

Height: 15' 3"

494.73 SF Walls	71.37 SF Ceiling
566.10 SF Walls & Ceiling	71.37 SF Floor
7.93 SY Flooring	31.08 LF Floor Perimeter
34.01 LF Ceil. Perimeter	

Door

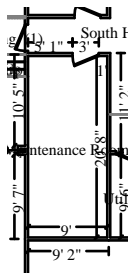
2' 11 1/4" X 8' 2 1/16"

Opens into EAST_HALLWA2

DESCRIPTION	QTY	REMOVE	REPLACE	TAX	TOTAL
354. Remove damaged suspended ceiling tile and bag for disposal	71.37 SF	0.53	0.00	0.00	37.83
355. Tear out and bag damaged insulation	566.10 SF	0.90	0.00	0.00	509.49
140. Clean the walls and ceiling	566.10 SF	0.00	0.51	0.00	288.71

CONTINUED - Utility room

DESCRIPTION	QTY	REMOVE	REPLACE	TAX	TOTAL
141. Clean floor	71.37 SF	0.00	0.59	0.00	42.11
142. Clean door hardware	1.00 EA	0.00	9.49	0.00	9.49
143. Clean door (per side)	2.00 EA	0.00	10.27	0.00	20.54
144. Clean outlet or switch	2.00 EA	0.00	4.97	0.00	9.94
145. Clean water heater	1.00 EA	0.00	33.79	0.00	33.79
Totals: Utility room				0.00	951.90



Maintenance Room

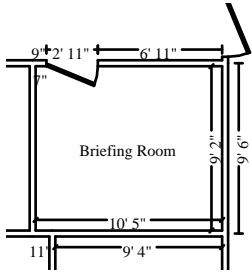
Height: 15' 3"

880.85 SF Walls	186.31 SF Ceiling
1,067.16 SF Walls & Ceiling	186.31 SF Floor
20.70 SY Flooring	56.36 LF Floor Perimeter
59.35 LF Ceil. Perimeter	

DESCRIPTION	QTY	REMOVE	REPLACE	TAX	TOTAL
349. Remove damaged suspended ceiling tile and bag for disposal	186.31 SF	0.53	0.00	0.00	98.74
353. Remove Suspended ceiling grid - 2' x 4'	186.31 SF	0.20	0.00	0.00	37.26
350. Tear out and bag damaged insulation	1,067.16 SF	0.90	0.00	0.00	960.44
128. Tear out wet drywall, cleanup, bag for disposal	369.00 SF	1.23	0.00	0.00	453.87
130. Clean the walls	880.85 SF	0.00	0.51	0.00	449.23
131. Clean and deodorize carpet	186.31 SF	0.00	0.61	0.00	113.65
132. Clean light bar	3.00 EA	0.00	26.38	0.00	79.14
133. Clean outlet or switch	4.00 EA	0.00	4.97	0.00	19.88
134. Clean shelving - wood	30.00 LF	0.00	1.28	0.00	38.40
135. Clean door hardware	1.00 EA	0.00	9.49	0.00	9.49
136. Clean door (per side)	2.00 EA	0.00	10.27	0.00	20.54
137. Clean floor	186.31 SF	0.00	0.59	0.00	109.92
Totals: Maintenance Room				0.00	2,390.56
Total: Common Areas				0.00	20,450.37

2' 11 7/8" X 8' 1 1/4"

Opens into SOUTH_HALLWA



Briefing Room

Height: 15' 3"

574.33 SF Walls	96.00 SF Ceiling
670.33 SF Walls & Ceiling	96.00 SF Floor
10.67 SY Flooring	36.39 LF Floor Perimeter
39.27 LF Ceil. Perimeter	

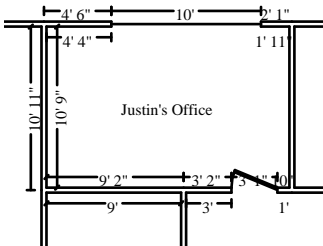
Door

2' 10 1/2" X 8' 6 3/8"

Opens into WEST_HALLWAY

DESCRIPTION	QTY	REMOVE	REPLACE	TAX	TOTAL
362. Remove damaged suspended ceiling tile and bag for disposal	96.00 SF	0.53	0.00	0.00	50.88
363. Remove Suspended ceiling grid - 2' x 4'	96.00 SF	0.20	0.00	0.00	19.20
364. Tear out and bag damaged insulation	670.33 SF	0.90	0.00	0.00	603.30
152. Clean the walls and ceiling	670.33 SF	0.00	0.51	0.00	341.87
153. Clean light bar	2.00 EA	0.00	26.38	0.00	52.76
154. Clean door hardware	1.00 EA	0.00	9.49	0.00	9.49
155. Clean door (per side)	2.00 EA	0.00	10.27	0.00	20.54
156. Clean outlet or switch	3.00 EA	0.00	4.97	0.00	14.91
157. Clean suspended ceiling grid	96.00 SF	0.00	0.44	0.00	42.24
158. Clean floor	96.00 SF	0.00	0.59	0.00	56.64

Totals: Briefing Room 0.00 1,211.83



Justin's Office

Height: 15' 3"

760.50 SF Walls	174.82 SF Ceiling
935.32 SF Walls & Ceiling	174.82 SF Floor
19.42 SY Flooring	50.94 LF Floor Perimeter
54.01 LF Ceil. Perimeter	

Window

10' 1/16" X 3' 10 7/16"

Opens into Exterior

Door

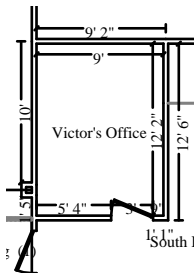
3' 7/8" X 7' 11 1/4"

Opens into WEST_HALLWAY

DESCRIPTION	QTY	REMOVE	REPLACE	TAX	TOTAL
365. Remove damaged suspended ceiling tile and bag for disposal	174.82 SF	0.53	0.00	0.00	92.65
366. Remove Suspended ceiling grid - 2' x 4'	174.82 SF	0.20	0.00	0.00	34.96
367. Tear out and bag damaged insulation	935.32 SF	0.90	0.00	0.00	841.79

CONTINUED - Justin's Office

DESCRIPTION	QTY	REMOVE	REPLACE	TAX	TOTAL
164. Clean the walls and ceiling	935.32 SF	0.00	0.51	0.00	477.01
165. Clean light bar	4.00 EA	0.00	26.38	0.00	105.52
166. Clean door hardware	1.00 EA	0.00	9.49	0.00	9.49
167. Clean door (per side)	2.00 EA	0.00	10.27	0.00	20.54
168. Clean outlet or switch	3.00 EA	0.00	4.97	0.00	14.91
169. Clean window unit (per side) 21 - 40 SF	1.00 EA	0.00	28.82	0.00	28.82
170. Clean window blind - horizontal or vertical	40.00 SF	0.00	1.86	0.00	74.40
171. Clean suspended ceiling grid	174.82 SF	0.00	0.44	0.00	76.92
172. Clean floor	174.82 SF	0.00	0.59	0.00	103.14
Totals: Justin's Office				0.00	1,880.15



Victor's Office

Height: 15' 3"

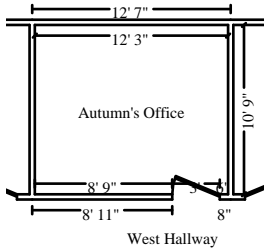
622.19 SF Walls	109.77 SF Ceiling
731.97 SF Walls & Ceiling	109.77 SF Floor
12.20 SY Flooring	39.42 LF Floor Perimeter
42.39 LF Ceil. Perimeter	

Door **2' 11 11/16" X 8' 2 1/16"** **Opens into SOUTH_HALLWA**

DESCRIPTION	QTY	REMOVE	REPLACE	TAX	TOTAL
368. Remove damaged suspended ceiling tile and bag for disposal	109.77 SF	0.53	0.00	0.00	58.18
369. Remove Suspended ceiling grid - 2' x 4'	109.77 SF	0.20	0.00	0.00	21.95
370. Tear out and bag damaged insulation	731.97 SF	0.90	0.00	0.00	658.77
177. Tear out wet drywall, cleanup, bag for disposal	216.00 SF	1.23	0.00	0.00	265.68
180. Clean the walls and ceiling	731.97 SF	0.00	0.51	0.00	373.30
181. Clean light bar	2.00 EA	0.00	26.38	0.00	52.76
182. Clean door hardware	1.00 EA	0.00	9.49	0.00	9.49
183. Clean door (per side)	2.00 EA	0.00	10.27	0.00	20.54
184. Clean outlet or switch	3.00 EA	0.00	4.97	0.00	14.91
185. Clean suspended ceiling grid	109.77 SF	0.00	0.44	0.00	48.30
186. Clean floor	109.77 SF	0.00	0.59	0.00	64.76

CONTINUED - Victor's Office

DESCRIPTION	QTY	REMOVE	REPLACE	TAX	TOTAL
Totals: Victor's Office				0.00	1,588.64

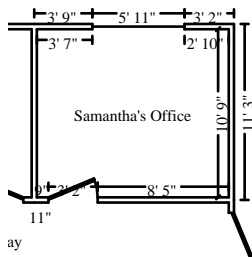


Autumn's Office

Height: 15' 3"

678.56 SF Walls	132.29 SF Ceiling
810.85 SF Walls & Ceiling	132.29 SF Floor
14.70 SY Flooring	43.09 LF Floor Perimeter
46.11 LF Ceil. Perimeter	

DESCRIPTION	QTY	REMOVE	REPLACE	TAX	TOTAL
Door					
			3' 1/4" X 8' 1 5/8"		
			Opens into WEST_HALLWAY		
371. Remove damaged suspended ceiling tile and bag for disposal	132.29 SF	0.53	0.00	0.00	70.11
372. Remove Suspended ceiling grid - 2' x 4'	132.29 SF	0.20	0.00	0.00	26.46
373. Tear out and bag damaged insulation	810.85 SF	0.90	0.00	0.00	729.77
192. Clean the walls and ceiling	810.85 SF	0.00	0.51	0.00	413.53
193. Clean light bar	2.00 EA	0.00	26.38	0.00	52.76
194. Clean door hardware	1.00 EA	0.00	9.49	0.00	9.49
195. Clean door (per side)	2.00 EA	0.00	10.27	0.00	20.54
196. Clean outlet or switch	3.00 EA	0.00	4.97	0.00	14.91
197. Clean suspended ceiling grid	132.29 SF	0.00	0.44	0.00	58.21
198. Clean floor	132.29 SF	0.00	0.59	0.00	78.05
Totals: Autumn's Office				0.00	1,473.83



Samantha's Office

Height: 15' 3"

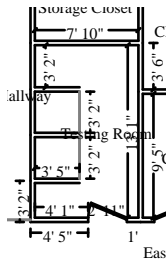
654.96 SF Walls	132.29 SF Ceiling
787.25 SF Walls & Ceiling	132.29 SF Floor
14.70 SY Flooring	42.95 LF Floor Perimeter
46.11 LF Ceil. Perimeter	

DESCRIPTION	QTY	REMOVE	REPLACE	TAX	TOTAL
Door					
			3' 1 7/8" X 8' 4"		
			Opens into WEST_HALLWAY		
Window					
			5' 10 13/16" X 3' 8 1/2"		
			Opens into Exterior		

CONTINUED - Samantha's Office

DESCRIPTION	QTY	REMOVE	REPLACE	TAX	TOTAL
374. Remove damaged suspended ceiling tile and bag for disposal	132.29 SF	0.53	0.00	0.00	70.11
375. Remove Suspended ceiling grid - 2' x 4'	132.29 SF	0.20	0.00	0.00	26.46
376. Tear out and bag damaged insulation	787.25 SF	0.90	0.00	0.00	708.53
204. Clean the walls and ceiling	787.25 SF	0.00	0.51	0.00	401.50
205. Clean light bar	2.00 EA	0.00	26.38	0.00	52.76
206. Clean door hardware	1.00 EA	0.00	9.49	0.00	9.49
207. Clean door (per side)	2.00 EA	0.00	10.27	0.00	20.54
208. Clean outlet or switch	3.00 EA	0.00	4.97	0.00	14.91
209. Clean window unit (per side) 21 - 40 SF	1.00 EA	0.00	28.82	0.00	28.82
210. Clean window blind - horizontal or vertical	24.00 SF	0.00	1.86	0.00	44.64
211. Clean suspended ceiling grid	132.29 SF	0.00	0.44	0.00	58.21
212. Clean floor	132.29 SF	0.00	0.59	0.00	78.05
Totals: Samantha's Office				0.00	1,514.02
Total: Office				0.00	7,668.47

Classroom



Testing Room

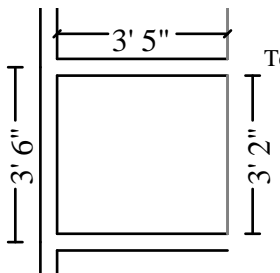
Height: 15' 3"

608.18 SF Walls	78.48 SF Ceiling
686.67 SF Walls & Ceiling	78.48 SF Floor
8.72 SY Flooring	38.54 LF Floor Perimeter
41.49 LF Ceil. Perimeter	

Door

2' 11 3/8" X 8' 4"

Opens into EAST_HALLWA2



Missing Wall

Subroom: Testing Room (2)

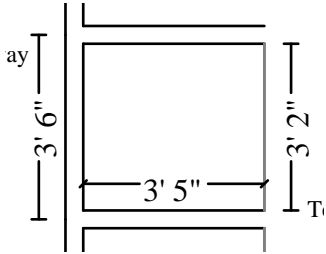
Height: 15' 3"

151.79 SF Walls	10.72 SF Ceiling
162.51 SF Walls & Ceiling	10.72 SF Floor
1.19 SY Flooring	9.95 LF Floor Perimeter
9.95 LF Ceil. Perimeter	

3' 1 7/8" X 15' 3"

Opens into TESTING_ROOM

CONTINUED - Testing Room



Subroom: Testing Room (1)

Height: 15' 3"

151.39 SF Walls	10.63 SF Ceiling
162.02 SF Walls & Ceiling	10.63 SF Floor
1.18 SY Flooring	9.93 LF Floor Perimeter
9.93 LF Ceil. Perimeter	

Missing Wall

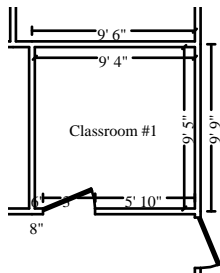
3' 1 9/16" X 15' 3"

Opens into TESTING_ROOM

DESCRIPTION	QTY	REMOVE	REPLACE	TAX	TOTAL
377. Remove damaged suspended ceiling tile and bag for disposal	99.84 SF	0.53	0.00	0.00	52.92
378. Remove Suspended ceiling grid - 2' x 4'	99.84 SF	0.20	0.00	0.00	19.97
379. Tear out and bag damaged insulation	1,011.20 SF	0.90	0.00	0.00	910.08
218. Clean the walls and ceiling	1,011.20 SF	0.00	0.51	0.00	515.71
219. Clean light bar	2.00 EA	0.00	26.38	0.00	52.76
220. Clean door hardware	1.00 EA	0.00	9.49	0.00	9.49
221. Clean door (per side)	2.00 EA	0.00	10.27	0.00	20.54
222. Clean outlet or switch	3.00 EA	0.00	4.97	0.00	14.91
223. Clean desk	1.00 EA	0.00	33.60	0.00	33.60
224. Clean suspended ceiling grid	99.84 SF	0.00	0.44	0.00	43.93
225. Clean floor	99.84 SF	0.00	0.59	0.00	58.91

Totals: Testing Room

0.00 1,732.82



Classroom #1

Height: 15' 3"

547.04 SF Walls	87.88 SF Ceiling
634.92 SF Walls & Ceiling	87.88 SF Floor
9.76 SY Flooring	34.46 LF Floor Perimeter
37.50 LF Ceil. Perimeter	

Door

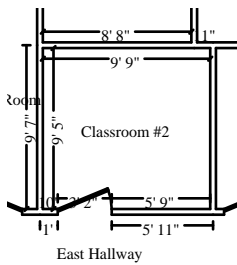
3' 7/16" X 8' 2 1/16"

Opens into EAST_HALLWA2

DESCRIPTION	QTY	REMOVE	REPLACE	TAX	TOTAL
380. Remove damaged suspended ceiling tile and bag for disposal	87.88 SF	0.53	0.00	0.00	46.58
381. Remove Suspended ceiling grid - 2' x 4'	87.88 SF	0.20	0.00	0.00	17.58

CONTINUED - Classroom #1

DESCRIPTION	QTY	REMOVE	REPLACE	TAX	TOTAL
382. Tear out and bag damaged insulation	634.92 SF	0.90	0.00	0.00	571.43
231. Clean the walls and ceiling	634.92 SF	0.00	0.51	0.00	323.81
232. Clean light bar	2.00 EA	0.00	26.38	0.00	52.76
233. Clean door hardware	1.00 EA	0.00	9.49	0.00	9.49
234. Clean door (per side)	2.00 EA	0.00	10.27	0.00	20.54
235. Clean outlet or switch	3.00 EA	0.00	4.97	0.00	14.91
236. Clean suspended ceiling grid	87.88 SF	0.00	0.44	0.00	38.67
237. Clean floor	87.88 SF	0.00	0.59	0.00	51.85
Totals: Classroom #1				0.00	1,147.62



Classroom #2

Height: 15' 3"

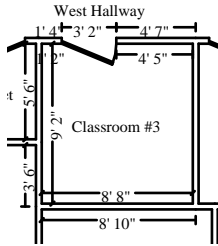
559.85 SF Walls	92.18 SF Ceiling
652.03 SF Walls & Ceiling	92.18 SF Floor
10.24 SY Flooring	35.25 LF Floor Perimeter
38.41 LF Ceil. Perimeter	

DESCRIPTION	QTY	REMOVE	REPLACE	TAX	TOTAL
383. Remove damaged suspended ceiling tile and bag for disposal	92.18 SF	0.53	0.00	0.00	48.86
384. Remove Suspended ceiling grid - 2' x 4'	92.18 SF	0.20	0.00	0.00	18.44
385. Tear out and bag damaged insulation	652.03 SF	0.90	0.00	0.00	586.83
243. Clean the walls and ceiling	652.03 SF	0.00	0.51	0.00	332.54
244. Clean light bar	2.00 EA	0.00	26.38	0.00	52.76
245. Clean door hardware	1.00 EA	0.00	9.49	0.00	9.49
246. Clean door (per side)	2.00 EA	0.00	10.27	0.00	20.54
247. Clean outlet or switch	3.00 EA	0.00	4.97	0.00	14.91
248. Clean suspended ceiling grid	92.18 SF	0.00	0.44	0.00	40.56
249. Clean floor	92.18 SF	0.00	0.59	0.00	54.39
Totals: Classroom #2				0.00	1,179.32

Door

3' 1 15/16" X 8' 2 7/16"

Opens into EAST_HALLWA2



Classroom #3

Height: 15' 3"

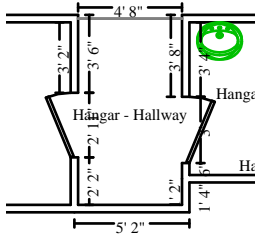
520.09 SF Walls
600.01 SF Walls & Ceiling
8.88 SY Flooring
35.77 LF Ceil. Perimeter

79.92 SF Ceiling
79.92 SF Floor
32.63 LF Floor Perimeter

DESCRIPTION	QTY	REMOVE	REPLACE	TAX	TOTAL
Door 3' 1 11/16" X 8' 1 1/4" Opens into WEST_HALLWAY					
386. Remove damaged suspended ceiling tile and bag for disposal	79.92 SF	0.53	0.00	0.00	42.36
387. Remove Suspended ceiling grid - 2' x 4'	79.92 SF	0.20	0.00	0.00	15.98
388. Tear out and bag damaged insulation	600.01 SF	0.90	0.00	0.00	540.01
255. Clean the walls and ceiling	600.01 SF	0.00	0.51	0.00	306.01
256. Clean light bar	2.00 EA	0.00	26.38	0.00	52.76
257. Clean door hardware	1.00 EA	0.00	9.49	0.00	9.49
258. Clean door (per side)	2.00 EA	0.00	10.27	0.00	20.54
259. Clean outlet or switch	2.00 EA	0.00	4.97	0.00	9.94
260. Clean suspended ceiling grid	79.92 SF	0.00	0.44	0.00	35.16
261. Clean floor	79.92 SF	0.00	0.59	0.00	47.15
Totals: Classroom #3				0.00	1,079.40

Hangar Rooms

DESCRIPTION	QTY	REMOVE	REPLACE	TAX	TOTAL
262. R&R Concrete slab on grade - finished in place	2.62 CY	246.20	537.38	0.00	2,052.98
Total: Hangar Rooms				0.00	2,052.98



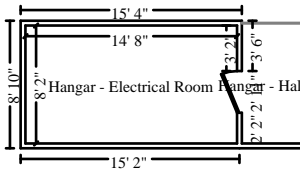
Hangar - Hallway

Height: 8'

134.21 SF Walls	38.93 SF Ceiling
173.14 SF Walls & Ceiling	38.93 SF Floor
4.33 SY Flooring	15.83 LF Floor Perimeter
26.36 LF Ceil. Perimeter	

Door	2' 10 3/4" X 6' 5 15/16"	Opens into HANGAR_ELE
Door	2' 11 11/16" X 6' 11 1/16"	Opens into HANGAR_BAT
Missing Wall - Goes to Floor	4' 7 15/16" X 8'	Opens into Exterior

DESCRIPTION	QTY	REMOVE	REPLACE	TAX	TOTAL
263. Clean with pressure/chemical spray - Very heavy	173.14 SF	0.00	1.12	0.00	193.92
264. Clean the walls and ceiling - Heavy	173.14 SF	0.00	0.63	0.00	109.08
265. Clean floor - Heavy	38.93 SF	0.00	0.85	0.00	33.09
Totals: Hangar - Hallway				0.00	336.09



Hangar - Electrical Room

Height: 8'

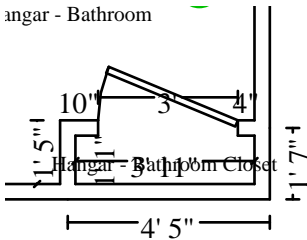
347.21 SF Walls	120.26 SF Ceiling
467.47 SF Walls & Ceiling	120.26 SF Floor
13.36 SY Flooring	42.86 LF Floor Perimeter
45.75 LF Ceil. Perimeter	

Door	2' 10 3/4" X 6' 5 15/16"	Opens into HANGAR_HAL
-------------	---------------------------------	------------------------------

DESCRIPTION	QTY	REMOVE	REPLACE	TAX	TOTAL
266. Clean with pressure/chemical spray - Very heavy	467.47 SF	0.00	1.12	0.00	523.57
267. Clean the walls and ceiling - Heavy	467.47 SF	0.00	0.63	0.00	294.51
268. Clean floor - Heavy	120.26 SF	0.00	0.85	0.00	102.22
269. Dehumidifier (per 24 hr period) - 70-109 ppd - No monitor.	5.00 EA	0.00	92.68	0.00	463.40
-- 1 unit for 5 days (weekly rate)					
-- For drying exposed wood framing after heavy cleaning					
270. Clean shelving - wood	99.00 LF	0.00	1.28	0.00	126.72
271. Clean door hardware - Heavy	1.00 EA	0.00	13.28	0.00	13.28
272. Clean door (per side)	2.00 EA	0.00	10.27	0.00	20.54

CONTINUED - Hangar - Electrical Room

DESCRIPTION	QTY	REMOVE	REPLACE	TAX	TOTAL
Totals: Hangar - Electrical Room				0.00	1,544.24



Hangar - Bathroom Closet

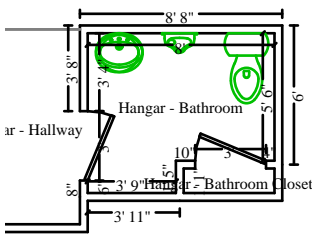
Height: 8'

58.17 SF Walls	4.09 SF Ceiling
62.26 SF Walls & Ceiling	4.09 SF Floor
0.45 SY Flooring	6.85 LF Floor Perimeter
9.89 LF Ceil. Perimeter	

Door **3' 7/16" X 6' 10 11/16"** **Opens into HANGAR_BAT**

DESCRIPTION	QTY	REMOVE	REPLACE	TAX	TOTAL
273. Clean with pressure/chemical spray - Very heavy	62.26 SF	0.00	1.12	0.00	69.73
274. Clean the walls and ceiling - Heavy	62.26 SF	0.00	0.63	0.00	39.22
275. Clean floor - Heavy	4.09 SF	0.00	0.85	0.00	3.48

Totals: Hangar - Bathroom Closet				0.00	112.43
----------------------------------	--	--	--	------	--------



Hangar - Bathroom

Height: 8'

196.17 SF Walls	48.98 SF Ceiling
245.15 SF Walls & Ceiling	48.98 SF Floor
5.44 SY Flooring	23.70 LF Floor Perimeter
29.71 LF Ceil. Perimeter	

Door **3' 7/16" X 6' 10 11/16"** **Opens into HANGAR_BAT3**

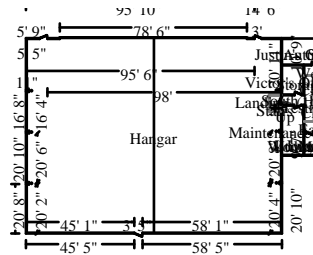
Door **2' 11 11/16" X 6' 11 1/16"** **Opens into HANGAR_HAL**

DESCRIPTION	QTY	REMOVE	REPLACE	TAX	TOTAL
276. Clean mirror - Heavy	6.00 SF	0.00	1.42	0.00	8.52
277. Clean sink - Heavy	1.00 EA	0.00	25.71	0.00	25.71
278. Clean sink faucet - Heavy	1.00 EA	0.00	19.59	0.00	19.59
279. Clean door hardware - Heavy	1.00 EA	0.00	13.28	0.00	13.28
280. Clean door (per side)	2.00 EA	0.00	10.27	0.00	20.54
281. Clean outlet or switch	1.00 EA	0.00	4.97	0.00	4.97
282. Clean toilet paper dispenser - Heavy	1.00 EA	0.00	13.56	0.00	13.56

CONTINUED - Hangar - Bathroom

DESCRIPTION	QTY	REMOVE	REPLACE	TAX	TOTAL
283. Clean toilet - Heavy	1.00 EA	0.00	42.83	0.00	42.83
284. Remove Wall paneling w/trim - PVC	196.17 SF	0.33	0.00	0.00	64.74
285. Toilet - Detach	1.00 EA	0.00	63.27	0.00	63.27
286. Remove Urinal - wall hung	1.00 EA	82.86	0.00	0.00	82.86
287. Remove Paper towel dispenser	1.00 EA	16.57	0.00	0.00	16.57
288. Sink - single basin - Detach	1.00 EA	0.00	37.68	0.00	37.68
289. Remove Mirror - 1/4" plate glass	6.00 SF	0.31	0.00	0.00	1.86
290. Clean with pressure/chemical spray - Very heavy	245.15 SF	0.00	1.12	0.00	274.57
291. Clean the walls and ceiling - Heavy	245.15 SF	0.00	0.63	0.00	154.44
292. Clean floor - Heavy	48.98 SF	0.00	0.85	0.00	41.63
293. Dehumidifier (per 24 hr period) - 70-109 ppd - No monitor.	5.00 EA	0.00	92.68	0.00	463.40
-- 1 unit for 5 days (weekly rate)					
-- For drying exposed wood framing after heavy cleaning					
Totals: Hangar - Bathroom				0.00	1,350.02
Total: Hangar Rooms				0.00	5,395.76
Total: Classroom				0.00	10,534.92

Hangar



Hangar

Height: Peaked

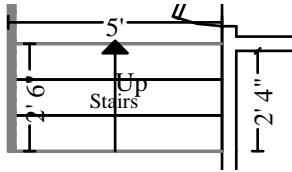
6,308.10 SF Walls	8,675.12 SF Ceiling
14,983.22 SF Walls & Ceiling	8,625.09 SF Floor
958.34 SY Flooring	290.99 LF Floor Perimeter
385.57 LF Ceil. Perimeter	

Door	3' 5 3/8" X 7' 7 5/16"	Opens into Exterior
Missing Wall	5' X 17' 10"	Opens into STAIRS
Missing Wall	2' 6 3/16" X 17' 10"	Opens into STAIRS
Missing Wall	4' 3 7/8" X 17' 10"	Opens into LANDING
Missing Wall	5' X 17' 10"	Opens into LANDING
Door	3' 3 1/8" X 7' 3 13/16"	Opens into Exterior
Door	78' 5 5/8" X 13'	Opens into Exterior
Door	2' 11 11/16" X 7' 3 13/16"	Opens into Exterior

DESCRIPTION	QTY	REMOVE	REPLACE	TAX	TOTAL
390. Tear out and bag damaged insulation	16,003. SF 22	0.90	0.00	0.00	14,402.90
295. Remove Sheathing - plywood - 1/2" CDX	2,327.90 SF	0.62	0.00	0.00	1,443.30
296. Remove Metal wall panel - ribbed/corrugated - per ind mat source	808.00 SF	0.56	0.00	0.00	452.48
-- Increased Xactimate pricing to more accurately reflect labor costs in removing the damaged paneling.					
-- Along north wall					
297. Tear out wet drywall, cleanup, bag for disposal	808.00 SF	1.23	0.00	0.00	993.84
298. Containment Barrier/Airlock/Decon. Chamber	784.00 SF	0.00	1.18	0.00	925.12
-- Contain the wall between the office and the hangar					
299. Clean with pressure/chemical spray - Very heavy	16,003. SF 22	0.00	1.12	0.00	17,923.61
300. Clean more than the walls and ceiling - Heavy	16,003. SF 22	0.00	0.63	0.00	10,082.03
301. Clean furnace - forced air - Large	1.00 EA	0.00	121.76	0.00	121.76
-- Clean suspended commercial heater					
302. Clean beams - exposed - Heavy	4,275.00 LF	0.00	3.05	0.00	13,038.75
303. Clean floor - Heavy	8,625.09 SF	0.00	0.85	0.00	7,331.33
304. Additional cost for high wall or ceiling - 11' to 14'	883.13 SF	0.00	0.07	0.00	61.82
305. Additional cost for high wall or ceiling - Over 14'	2,081.67 SF	0.00	0.10	0.00	208.17
306. Water extraction from hard surface floor	8,625.09 SF	0.00	0.27	0.00	2,328.77

CONTINUED - Hangar

DESCRIPTION	QTY	REMOVE	REPLACE	TAX	TOTAL
-- Extract the water off the floor during power-washing of ceiling and walls. Extraction is necessary to avoid flooding and cross-contaminating neighboring areas and buildings					
307. Clean door hardware	3.00 EA	0.00	9.49	0.00	28.47
308. Clean door (per side)	6.00 EA	0.00	10.27	0.00	61.62
309. Air mover (per 24 hour period) - No monitoring	40.00 EA	0.00	32.75	0.00	1,310.00
-- 4 units for 2 weeks (weekly rate)					
-- To help direct water during and after heavy washing					
310. Neg. air fan/Air scrub.-Large (per 24 hr period)-No monit.	30.00 DA	0.00	118.06	0.00	3,541.80
-- 3 units for 2 weeks (weekly rate)					
311. Hydroxyl generator - odor counteractant - 3 optics	30.00 DA	0.00	232.75	0.00	6,982.50
-- 3 units for 2 weeks (weekly rate)					
Totals: Hangar				0.00	81,238.27



Stairs

Height: 17' 10"

41.67 SF Walls	12.57 SF Ceiling
54.24 SF Walls & Ceiling	25.70 SF Floor
2.86 SY Flooring	3.14 LF Floor Perimeter
2.51 LF Ceil. Perimeter	

Missing Wall

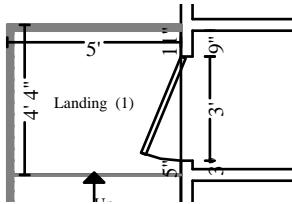
5' X 17' 10"

Opens into HANGAR

Missing Wall

2' 6 3/16" X 17' 10"

Opens into HANGAR



Subroom: Landing (1)

Height: 15' 4"

46.50 SF Walls	21.61 SF Ceiling
68.11 SF Walls & Ceiling	21.61 SF Floor
2.40 SY Flooring	1.32 LF Floor Perimeter
4.32 LF Ceil. Perimeter	

Missing Wall

5' X 15' 4"

Opens into STAIRS

Door

3' X 6' 7"

Opens into SOUTH_HALLWA

Missing Wall

5' X 15' 4"

Opens into HANGAR

Missing Wall

4' 3 7/8" X 15' 4"

Opens into HANGAR

DESCRIPTION	QTY	REMOVE	REPLACE	TAX	TOTAL
-------------	-----	--------	---------	-----	-------

CONTINUED - Stairs

DESCRIPTION	QTY	REMOVE	REPLACE	TAX	TOTAL
313. Tear out and bag wet insulation - Category 3 water	122.35 SF	1.62	0.00	0.00	198.21
314. Clean with pressure/chemical spray - Very heavy	122.35 SF	0.00	1.12	0.00	137.03
315. Clean the walls and ceiling - Heavy	122.35 SF	0.00	0.63	0.00	77.08
316. Clean floor - Heavy	47.31 SF	0.00	0.85	0.00	40.21
317. Additional cost for high wall or ceiling - 11' to 14'	12.34 SF	0.00	0.07	0.00	0.86
318. Additional cost for high wall or ceiling - Over 14'	29.10 SF	0.00	0.10	0.00	2.91
319. Water extraction from hard surface floor - Cat 3 water	47.31 SF	0.00	0.88	0.00	41.63
320. Clean door (per side)	1.00 EA	0.00	10.27	0.00	10.27
Totals: Stairs				0.00	508.20
Total: Hangar				0.00	81,746.47
Total: 1st Floor				0.00	120,400.23

Exterior

DESCRIPTION	QTY	REMOVE	REPLACE	TAX	TOTAL
321. Clean with pressure/chemical spray - Very heavy	1,163.96 SF	0.00	1.12	0.00	1,303.64
322. Clean the surface area - Heavy	1,163.96 SF	0.00	0.63	0.00	733.29
323. Additional cost for high wall or ceiling - Over 14'	1,163.96 SF	0.00	0.10	0.00	116.40
324. Clean roof vent	1.00 EA	0.00	20.25	0.00	20.25
Totals: Exterior				0.00	2,173.58
Total: Building				0.00	164,928.43
Line Item Totals: 2697457V1				0.00	154,928.43

Grand Total Areas:

19,177.64 SF Walls	10,827.27 SF Ceiling	30,004.91 SF Walls and Ceiling
10,790.36 SF Floor	1,198.93 SY Flooring	1,133.00 LF Floor Perimeter
0.00 SF Long Wall	0.00 SF Short Wall	1,346.22 LF Ceil. Perimeter
10,790.36 Floor Area	11,092.45 Total Area	19,006.05 Interior Wall Area
8,420.06 Exterior Wall Area	537.17 Exterior Perimeter of Walls	
0.00 Surface Area	0.00 Number of Squares	0.00 Total Perimeter Length
0.00 Total Ridge Length	0.00 Total Hip Length	

Summary for Dwelling

Line Item Total	154,928.43
Replacement Cost Value	\$154,928.43
Net Claim	\$154,928.43

Tyler Gillette

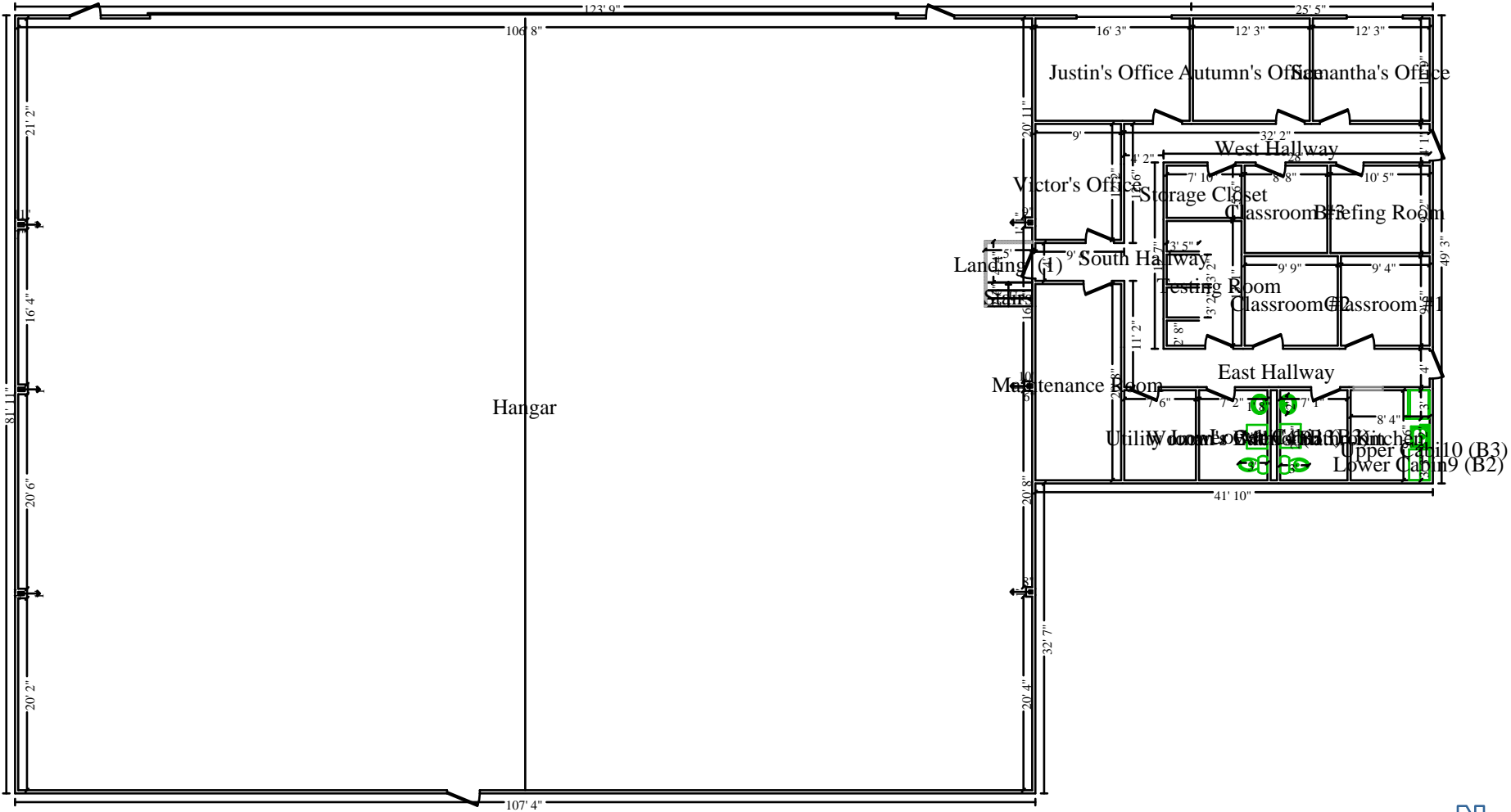
Recap by Room

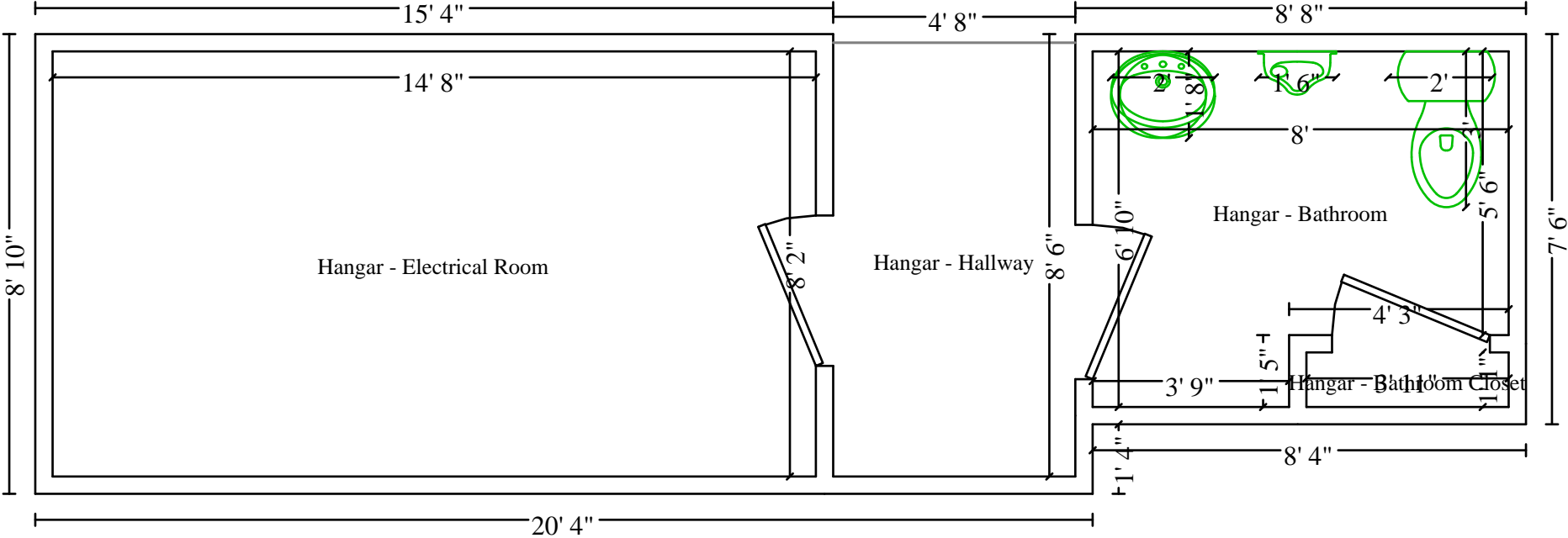
Estimate: 2697457V1	-10,000.00	-6.45%
Area: Building	42,354.62	27.34%
Area: 1st Floor		
Area: Common Areas		
Woman's Bathroom	1,068.93	0.69%
Men's Bathroom	1,059.73	0.68%
East Hallway	5,187.42	3.35%
Kitchen	1,548.55	1.00%
South Hallway	2,188.72	1.41%
West Hallway	5,248.38	3.39%
Storage Closet	806.18	0.52%
Utility room	951.90	0.61%
Maintenance Room	2,390.56	1.54%
<hr/>		
Area Subtotal: Common Areas	20,450.37	13.20%
Area: Office		
Briefing Room	1,211.83	0.78%
Justin's Office	1,880.15	1.21%
Victor's Office	1,588.64	1.03%
Autumn's Office	1,473.83	0.95%
Samantha's Office	1,514.02	0.98%
<hr/>		
Area Subtotal: Office	7,668.47	4.95%
Area: Classroom		
Testing Room	1,732.82	1.12%
Classroom #1	1,147.62	0.74%
Classroom #2	1,179.32	0.76%
Classroom #3	1,079.40	0.70%
Area: Hangar Rooms	2,052.98	1.33%
Hangar - Hallway	336.09	0.22%
Hangar - Electrical Room	1,544.24	1.00%
Hangar - Bathroom Closet	112.43	0.07%
Hangar - Bathroom	1,350.02	0.87%
<hr/>		
Area Subtotal: Hangar Rooms	5,395.76	3.48%
<hr/>		
Area Subtotal: Classroom	10,534.92	6.80%

Area: Hangar		
Hangar	81,238.27	52.44%
Stairs	508.20	0.33%
<hr/>		
Area Subtotal: Hangar	81,746.47	52.76%
<hr/>		
Area Subtotal: 1st Floor	120,400.23	77.71%
Exterior	2,173.58	1.40%
<hr/>		
Area Subtotal: Building	164,928.43	106.45%
<hr/>		
Subtotal of Areas	154,928.43	100.00%
<hr/>		
Total	154,928.43	100.00%

Recap by Category

Items	Total	%
APPLIANCES	61.23	0.04%
CONT: CLEAN - HARD FURNITURE	33.60	0.02%
CLEANING	76,329.41	49.27%
CONCRETE & ASPHALT	1,407.94	0.91%
GENERAL DEMOLITION	36,161.70	23.34%
HEAVY EQUIPMENT	6,782.40	4.38%
PERMITS AND FEES	3,417.12	2.21%
HAZARDOUS MATERIAL REMEDIATION	11,713.30	7.56%
HEAT, VENT & AIR CONDITIONING	9,356.40	6.04%
LABOR ONLY	1,940.16	1.25%
TEMPORARY REPAIRS	5,540.16	3.58%
WATER EXTRACTION & REMEDIATION	2,185.01	1.41%
Subtotal	154,928.43	100.00%





Hangar Rooms