

APPROXIMATE TOWER LOCATION

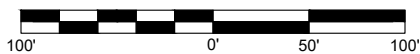
LAT: 32° 31' 10.4450" N (NAD 83)

LONG: 97° 4' 27.3234" W (NAD 83)

* NOTE: SURVEY REQUIRED TO VERIFY TOWER COORDINATES

1 SITE PLAN

SCALE: 1" = 100'



ENERTECH
an ONTIVITY company

5920 West William Cannon Drive,
Building 1, Suite 102
Austin, Texas 78749
www.enertechresources.com

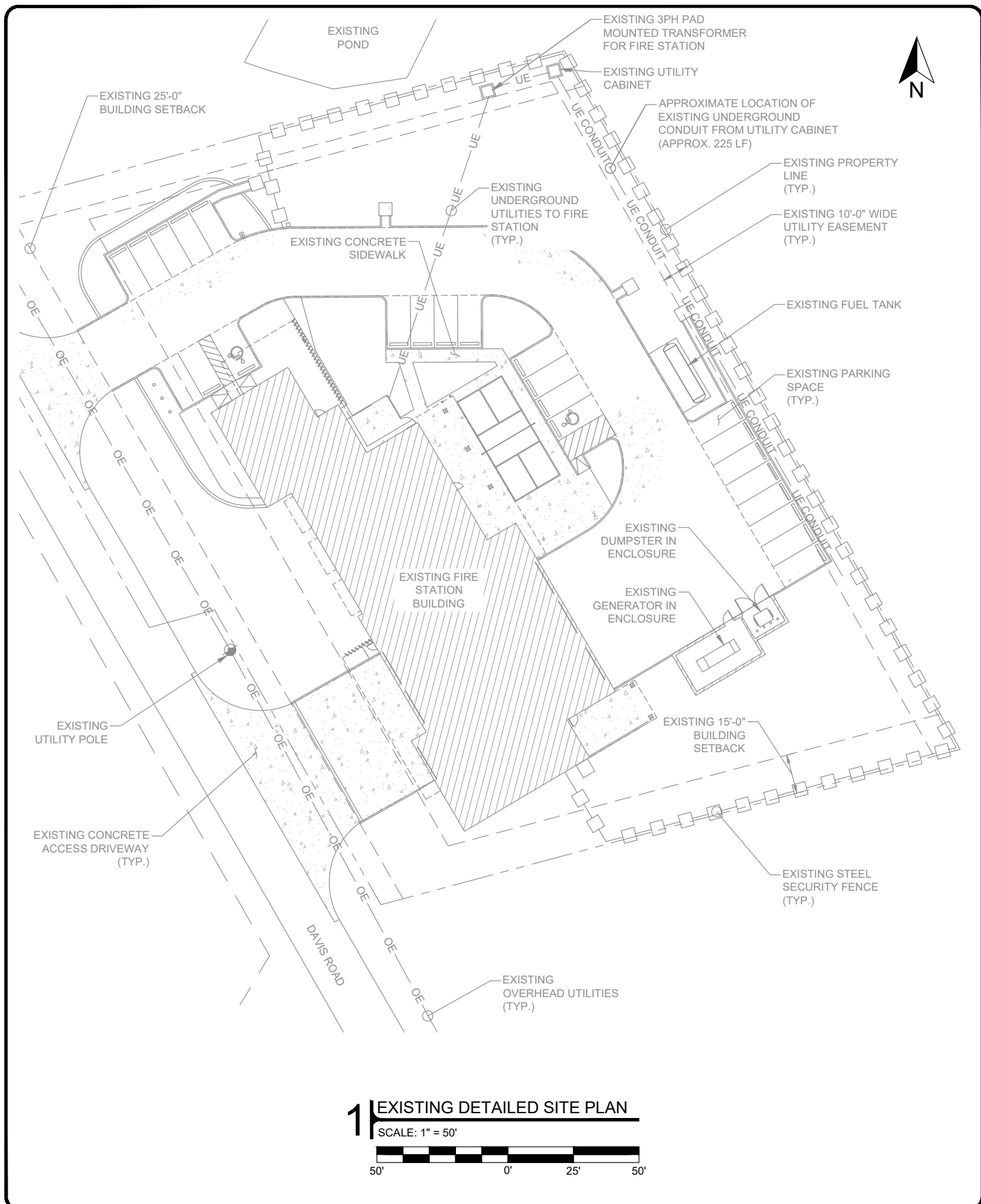
MOTOROLA SOLUTIONS
GRAND PRAIRIE, TEXAS

FS11

DATE
PRINTED

4/3/24

EX1



ENERTECH
an ONTIVITY company

5920 West William Cannon Drive,
Building 1, Suite 102
Austin, Texas 78749
www.enertechresources.com

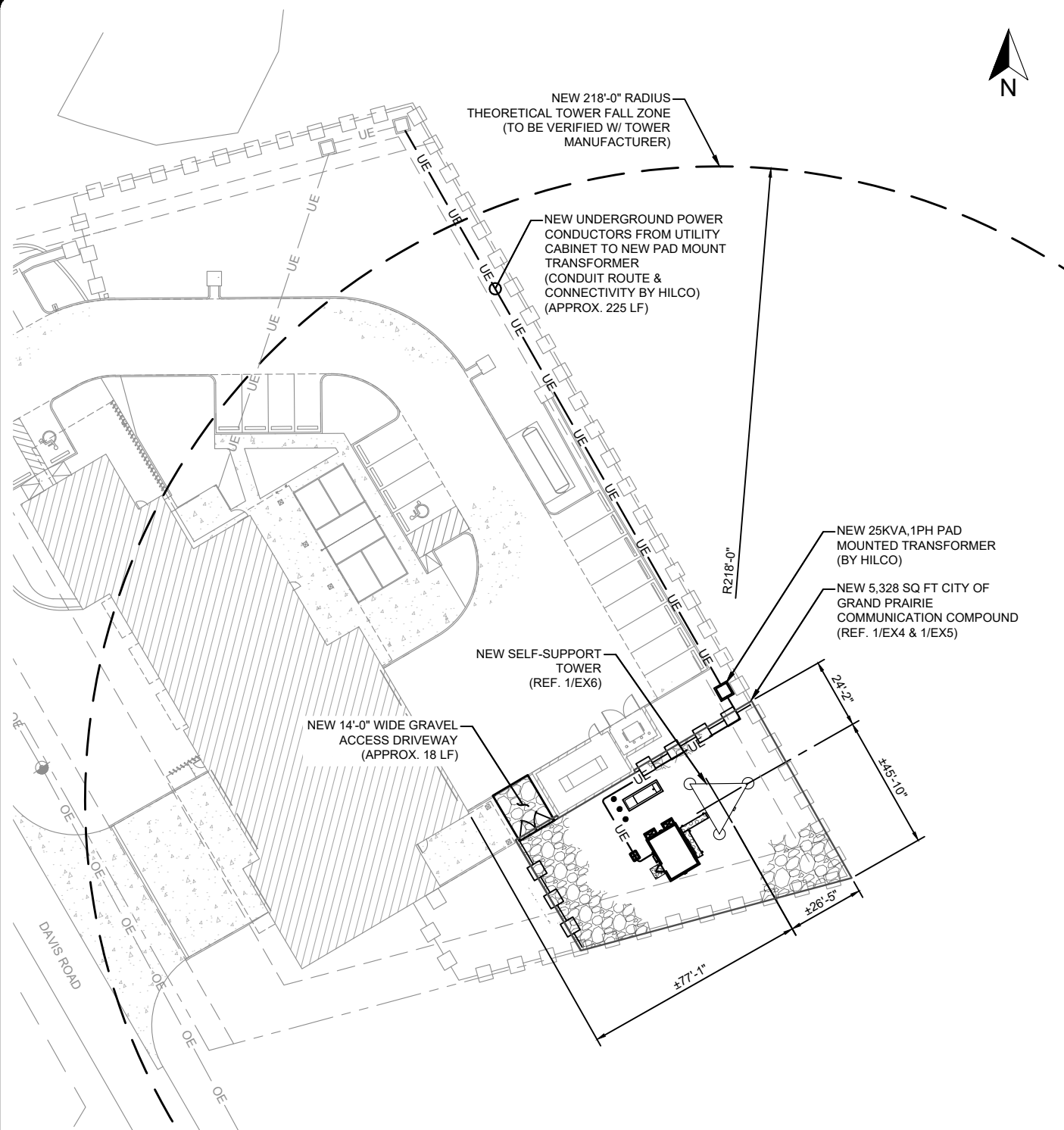
MOTOROLA SOLUTIONS
GRAND PRAIRIE, TEXAS

FS11

DATE
PRINTED

4/3/24

EX2



5920 West William Cannon Drive,
Building 1, Suite 102
Austin, Texas 78749
www.enertechresources.com

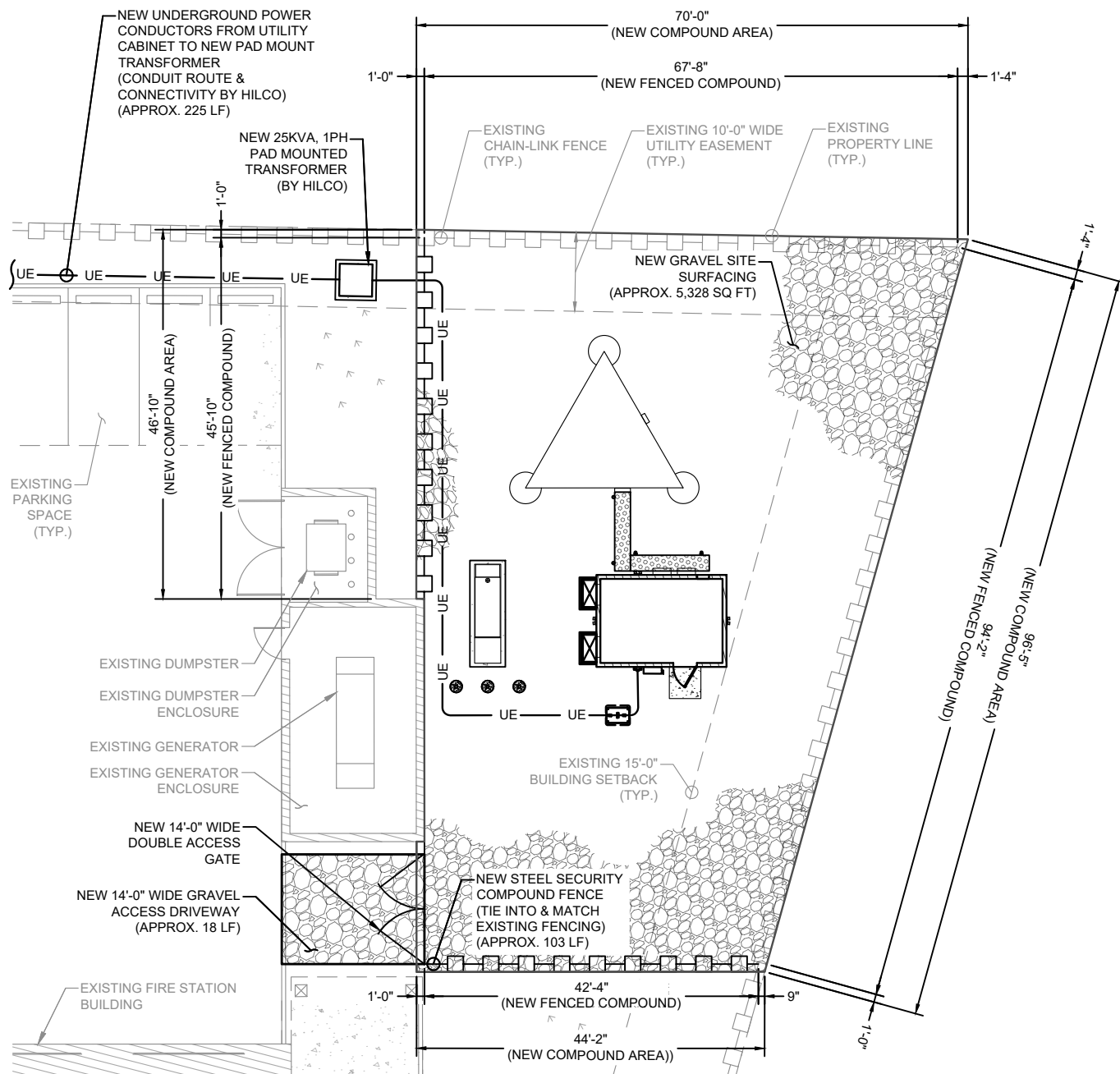
MOTOROLA SOLUTIONS
GRAND PRAIRIE, TEXAS

FS11

DATE
PRINTED

4/3/24

EX3



1 NEW OVERALL COMPOUND PLAN
SCALE: 1" = 20'
20' 0' 10' 20'



5920 West William Cannon Drive,
Building 1, Suite 102
Austin, Texas 78749
www.enertechresources.com

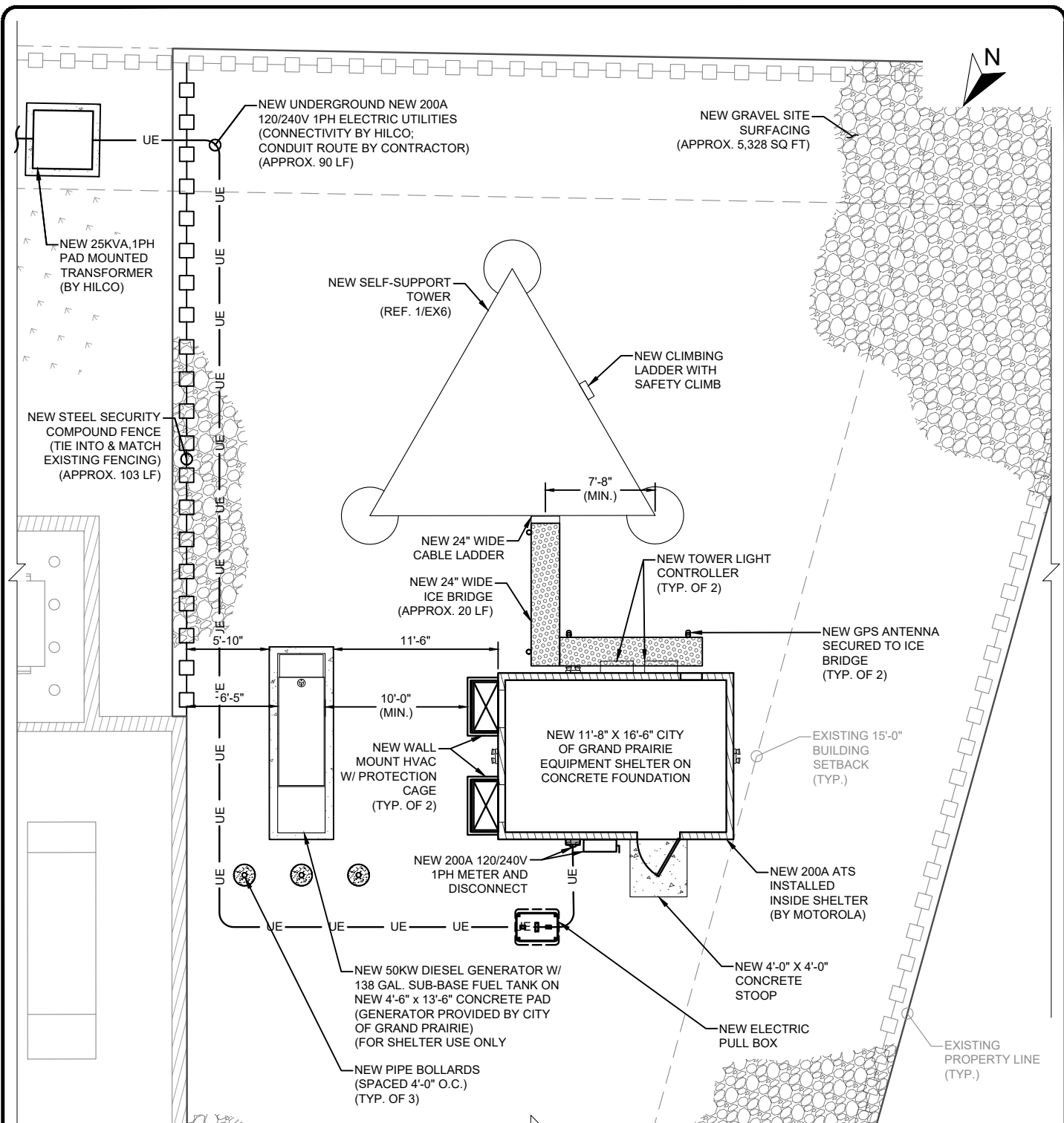
MOTOROLA SOLUTIONS
GRAND PRAIRIE, TEXAS

FS11

DATE
PRINTED

4/3/24

EX4



1 NEW DETAILED COMPOUND PLAN
SCALE: 1" = 10'



5920 West William Cannon Drive,
Building 1, Suite 102
Austin, Texas 78749
www.enertechresources.com

MOTOROLA SOLUTIONS
GRAND PRAIRIE, TEXAS

FS11

DATE
PRINTED

4/3/24

EX5

TOP OF NEW LIGHTNING ROD
ELEV. $\pm 218'-0"$ AGL (TO BE VERIFIED)

TOP OF NEW ANTENNAS
ELEV. $\pm 207'-0"$ AGL (REF. NOTE 2)

TOP OF NEW TOWER
ELEV. $200'-0"$ AGL (REF. NOTE 1)

NEW ATC-GC7V60 TX OMNI ANTENNA ON NEW
6'-0" STANDOFF MOUNT
ELEV. $\pm 200'-0"$ AGL (ANTENNA BASE)

NEW ATC-GC7V60 RX OMNI ANTENNA ON NEW
6'-0" STANDOFF MOUNT
ELEV. $\pm 200'-0"$ AGL (ANTENNA BASE)

NEW HX6-6W MICROWAVE DISH W/ ICE SHIELD
ELEV. $\pm 180'-0"$ AGL (RAD CENTER)
(TO BE VERIFIED WITH FINAL MW DESIGN)

NEW HX6-6W MICROWAVE DISH W/ ICE SHIELD
ELEV. $\pm 140'-0"$ AGL (RAD CENTER)
(TO BE VERIFIED WITH FINAL MW DESIGN)

(3) NEW TOWER OBSTRUCTION LIGHTS
ELEV. $\pm 100'-0"$ AGL (REF. NOTE 1)

NEW LIGHTNING ROD ON
NEW LIGHTNING ROD
EXTENSION PIPE
(INSTALL MINIMUM 24"
ABOVE NEW ANTENNAS)

NEW TOWER BEACON
(TYP. OF 2)

NEW TTA
(SECURED TO TOWER)

NEW 200'-0"
SELF-SUPPORT TOWER
(REF. NOTE 1)

EXISTING GROUND ELEVATION
ELEV. $0'-0"$ (REF.)

NOTES:

1. THE ANTENNA STRUCTURE IS SHOWN FOR GENERAL CONFIGURATION PURPOSES ONLY. TOWER MAPPING AND STRUCTURAL ANALYSIS REQUIRED TO VERIFY EXISTING CONDITIONS AND STRUCTURAL INTEGRITY OF TOWER.
2. ANTENNA CONFIGURATION IS SUBJECT TO CHANGE. VERIFY ANTENNA HEIGHT, DOWN TILT, AND AZIMUTH WITH MOTOROLA RF ENGINEER PRIOR TO INSTALLATION.
3. MICROWAVE DISHES AND MOUNTING HARDWARE TO BE PROVIDED AND INSTALLED BY MICROWAVE PROVIDER.
4. UNDER NO CIRCUMSTANCES SHALL THE PROPOSED INSTALLATION CAUSE DAMAGE TO OR INTERFERE WITH THE STRUCTURE, CLIMBING FACILITY, SAFETY CLIMB (IF PRESENT) AND ANY OTHER LINES OR EQUIPMENT ATTACHED TO THE STRUCTURE.
5. ANTENNA COAX SHALL BE ATTACHED TO THE TOWER IN ACCORDANCE WITH R56 STANDARDS AND IN ACCORDANCE WITH THE TOWER ANALYSIS.

1 TOWER ELEVATION
SCALE: N.T.S.



ENERTECH
an **ONTIVITY** company

5920 West William Cannon Drive,
Building 1, Suite 102
Austin, Texas 78749
www.enertechresources.com

MOTOROLA SOLUTIONS
GRAND PRAIRIE, TEXAS

FS11

DATE
PRINTED

4/3/24

EX6