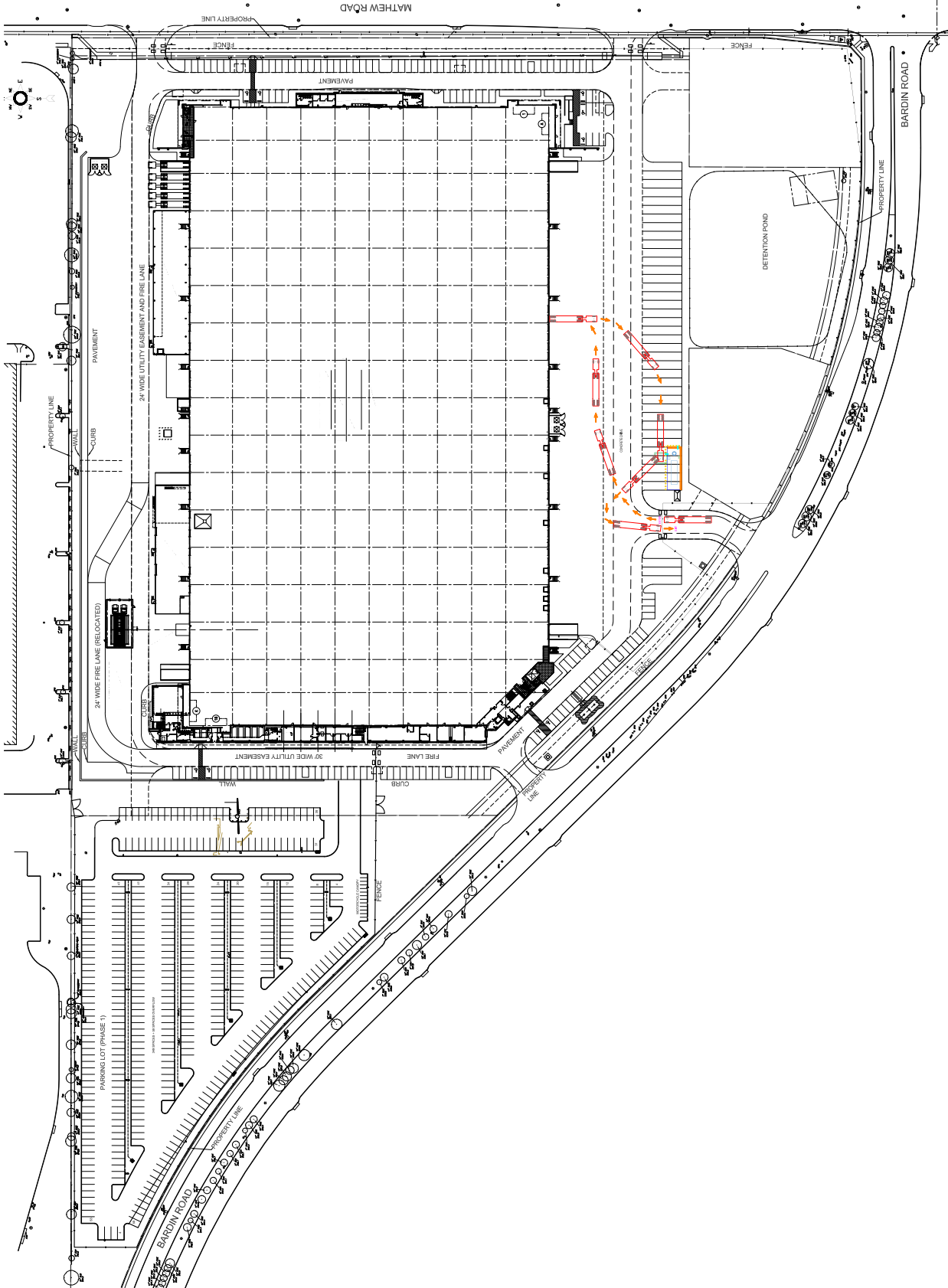


Specific use permit for Flex-N-Gate Texas on site fuel tank storage. Installation of a 12,000 gallon diesel fuel filling station Flex-N-Gates logistics fleet.

Our current truck fleet fuels their tanks in Arlington Texas. By installing our own fuel filling station, our trucks are able to refill on site without the need to add an additional stop. Not only will this help reduce the amount of truck traffic in the area, it will also decrease the overall emissions produced during their trips.

Currently our trucks are driving in and out of our property roughly 90 times per day. By installing the fueling station, this number will be reduced to roughly 60 times per day.

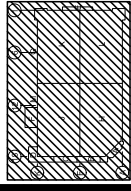
1. Operational plan:
 - The fuel filling station will be used by all FNG fleet drivers, roughly 15 trucks per day. Drivers will fuel up while on site at the Bardin Rd. location
2. Hours of operation
 - The fuel filling station will carry the same operating hours as the facility, 24 hrs/day. Weekend work is dependent on production schedule.
3. Truck service pathway
 - Nothing will change in our operating pattern. All trucks will enter and exit the facility from our guard shack gate on Bardin Rd. Please reference the drawing "FNG Grand Prairie - Truck Service Pathway.pdf".



1300 EASTMAN AVE.
FARMINGTON, CT 06030
TEL: 860-271-1100
WWW.BURNS&MCDONNELL.COM

GRAND PRAIRIE PHASE II
FACILITY IMPROVEMENTS
2150 W. BARDIN RD.
GRAND PRAIRIE, IL 60138

KEY PLAN



ISSUE/REVISION
DATE
BY
REVISION

DATE	BY	REVISION
01/20/2021	REDACTED	FOR REVIEW

PROJECT NAME
OUTSIDE STORAGE AND FUEL TANK
SHEET TITLE
OVERALL SITE PLAN
STP-24-08-0034
SHEET NUMBER
FNG-C-100

OVERALL SITE PLAN
SCALE: 1"=50'-0"