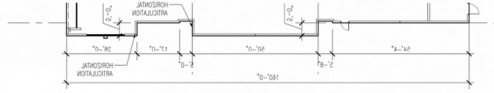


Exhibit C - Concept Elevations
Page 1 of 1

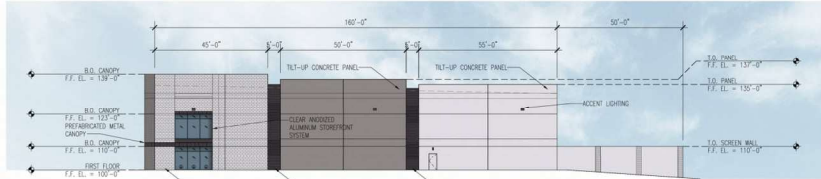


05 West Elevation Partial Floor Plan
SCALE: 1" = 30'

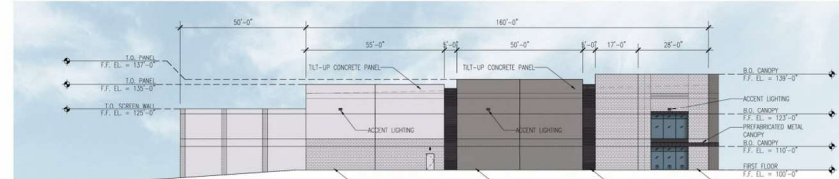
NORTH ELEVATION (SECONDARY FACADE)		SOUTH ELEVATION (SECONDARY FACADE)		EAST ELEVATION (SECONDARY FACADE)		WEST ELEVATION (PRIMARY FACADE)	
ACCENT MATERIALS/COLOR (105'-205' OF FACADE (21,563 SF))		ACCENT MATERIALS/COLOR (105'-205' OF FACADE (24,416 SF))		ACCENT MATERIALS/COLOR (105'-205' OF FACADE (24,472 SF))		ACCENT MATERIALS (205' OF FACADE (2,872 SF))	
COLOR 1		ACCENT MASONRY 1 - BRICK PATTERNS FORMER		ACCENT MASONRY 1 - BRICK PATTERNS FORMER		ACCENT MASONRY 1 - BRICK PATTERNS FORMER	
COLOR 2		ACCENT MASONRY 2 - HORIZONTAL FORMER		ACCENT MASONRY 2 - HORIZONTAL FORMER		ACCENT MASONRY 2 - HORIZONTAL FORMER	
HORIZONTAL & VERTICAL ARTICULATIONS		HORIZONTAL & VERTICAL ARTICULATIONS		HORIZONTAL & VERTICAL ARTICULATIONS		HORIZONTAL & VERTICAL ARTICULATIONS	
1/5 OF BUILDING HEIGHT (23'-6")		1/5 OF BUILDING HEIGHT (23')		1/5 OF BUILDING HEIGHT (23')		1/5 OF BUILDING HEIGHT (23')	
1/5 OF BUILDING LENGTH (840')		1/5 OF BUILDING LENGTH (850')		1/5 OF BUILDING LENGTH (840')		1/5 OF BUILDING LENGTH (160')	
ACCENT LIGHTS		ACCENT LIGHTS		ACCENT LIGHTS		ACCENT LIGHTS	
SIZE OF BUILDING LENGTH (160')		SIZE OF BUILDING LENGTH (160')		SIZE OF BUILDING LENGTH (160')		SIZE OF BUILDING LENGTH (160')	

INTERIM REVIEW DOCUMENTS
Fernando J. Andrade,
TX. #17868, 01-14-25
Not for Regulatory Approval,
Permit, or Construction.

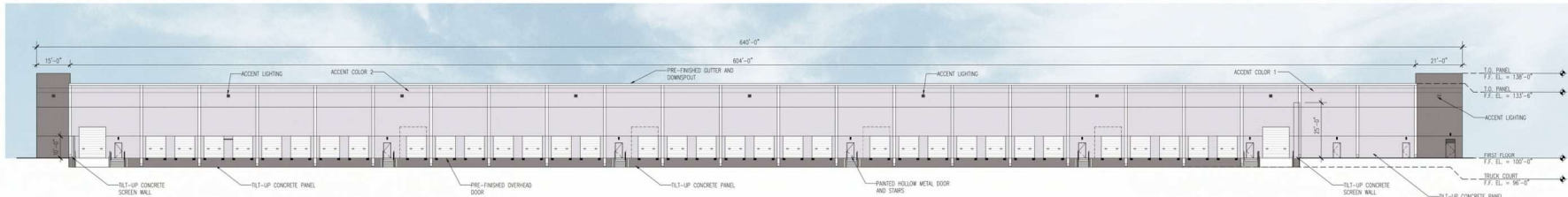
Copyright © 2025 GSR-Andrade Architects, Inc.
gsr | andrade
ARCHITECTS
2001 North Lamar St., Ste. 400
Dallas, Texas 75202
P 214.824.7040
F 214.887.2659



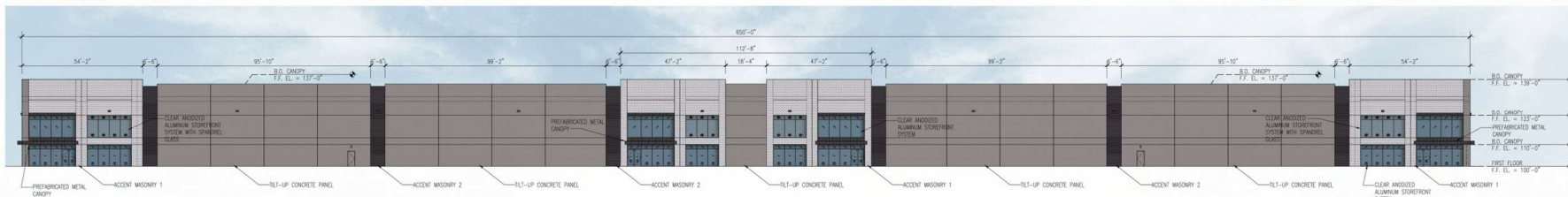
04 East Elevation
SCALE: 1" = 20'



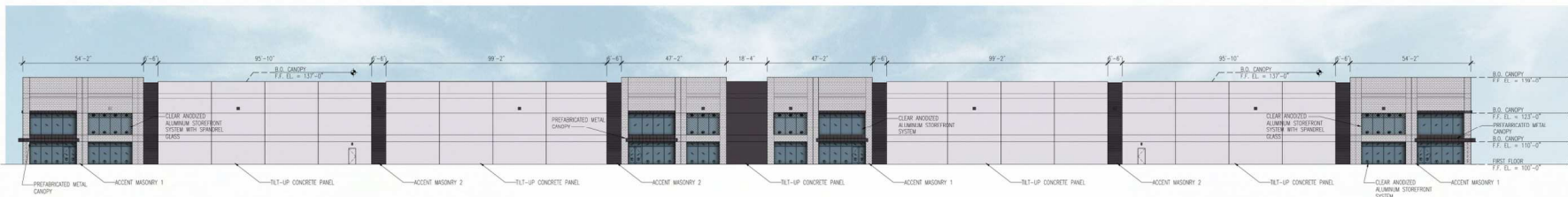
03 West Elevation (Duncan Perry)
SCALE: 1" = 20'



02 North Elevation
SCALE: 1" = 20'



01a South Elevation
SCALE: 1" = 20'



01 South Elevation
SCALE: 1" = 20'

GSR Andrade Architects
ARCHITECT
Structural Engineer
Mechanical/Electrical/Plumbing Engineers
Pape-Dawson Engineers
Civil/Landscape

TRUMONT
ARCHITECTS

TRUMONT GROUP - GRAND PRAIRIE
INDUSTRIAL PARK
930 DUNCAN PERRY ROAD
GRAND PRAIRIE, TEXAS 75050

PROJECT NO.: 3227
DATE: January 14, 2025
REVISIONS:
1/14/2025 Light Insulation Missing

A4.00
EXTERIOR ELEVATIONS