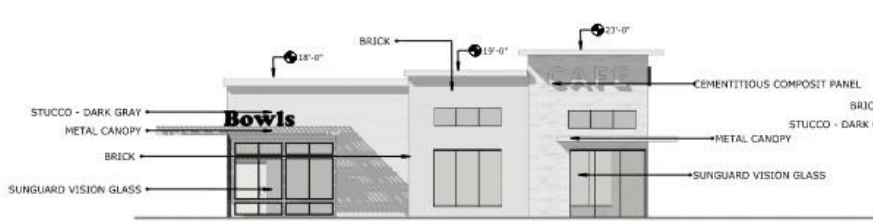




3040 E. NORTHWEST HWY
SUITE 101
DALLAS, TX 75238
214.738.2440

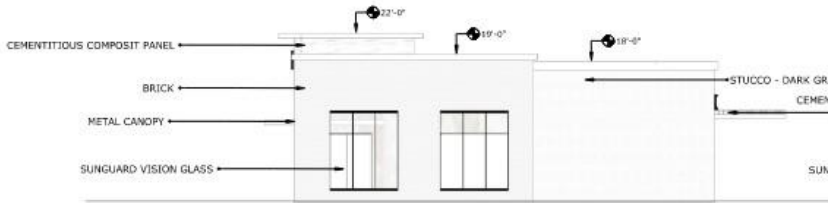
GRAND PRAIRIE SLX HOLDINGS LLC
GRAND PRAIRIE
BLK 1, PT LT 4
3705 S. STATE HWY 161
GRAND PRAIRIE, TEXAS



01 BUILDING A- EAST ELEVATION (FRONT)
SCALE 1/8"=1'-0"



02 BUILDING A- SOUTH ELEVATION (LEFT)
SCALE 1/8"=1'-0"



03 BUILDING A- WEST ELEVATION (BACK)
SCALE 1/8"=1'-0"



04 BUILDING A- NORTH ELEVATION (RIGHT)
SCALE 1/8"=1'-0"

EXTERIOR ELEVATIONS NOTES AND MATERIAL LEGEND

1. MATERIAL SYMBOLS ON ELEVATIONS ARE TO DISPLAY THE EXTENT OF THE MATERIAL ONLY. THEY ARE NOT TO SCALE.
2. PROVIDE BRICK EXPANSION NOTES PER THE AMERICAN BRICK INSTITUTES RECOMMENDATIONS

	BRICK - GRAY
	BRICK - BEIGE
	METAL PANEL
	CEMENTITIOUS COMPOSIT PANEL
	STONE
	STUCCO - BROWN
	STUCCO - DARK GRAY
	STUCCO - GRAY
	STUCCO - BEIGE
	STUCCO - LIGHT GRAY

MATERIAL CALCULATION TABLE							
BUILDING B-SOUTH ELEVATION		BUILDING B-NORTH ELEVATION		BUILDING B-WEST ELEVATION		BUILDING B-EAST ELEVATION	
TOTAL SURFACE AREA	1,653 SF	TOTAL SURFACE AREA	1,840 SF	TOTAL SURFACE AREA	1,126 SF	TOTAL SURFACE AREA	1,118 SF
TOTAL GLAZING AREA	385 SF (23%)	TOTAL GLAZING AREA	537 (29%)	TOTAL GLAZING AREA	202 SF (18%)	TOTAL GLAZING AREA	363 SF (32%)
TOTAL SURFACE AREA- GLAZING AREA	1,268 SF	TOTAL SURFACE AREA- GLAZING AREA	1,303 SF	TOTAL SURFACE AREA- GLAZING AREA	924 SF	TOTAL SURFACE AREA- GLAZING AREA	755 SF
BRICK - GRAY		BRICK - GRAY		BRICK - GRAY		BRICK - GRAY	
BRICK - BEIGE	195 SF (12%)	BRICK - BEIGE	1,03 SF (56%)	BRICK - BEIGE	442 SF (40%)	BRICK - BEIGE	230 SF (21%)
METAL PANEL		METAL PANEL		METAL PANEL		METAL PANEL	
CEMENTITIOUS COMPOSIT PANEL		CEMENTITIOUS COMPOSIT PANEL	272 SF (15%)	CEMENTITIOUS COMPOSIT PANEL	38 SF (3%)	CEMENTITIOUS COMPOSIT PANEL	250 SF (22%)
STONE		STONE		STONE		STONE	
STUCCO - BROWN		STUCCO - BROWN		STUCCO - BROWN		STUCCO - BROWN	
STUCCO - DARK GRAY	1,073 (65%)	STUCCO - DARK GRAY		STUCCO - DARK GRAY	444 SF (40%)	STUCCO - DARK GRAY	275 SF (25%)
STUCCO - GRAY		STUCCO - GRAY		STUCCO - GRAY		STUCCO - GRAY	
STUCCO - BEIGE		STUCCO - BEIGE		STUCCO - BEIGE		STUCCO - BEIGE	

APPROVED _____ DENIED _____

STAFF _____

PAZ _____

Neighborhood # _____

See the Staff Approval Letter or PAZ Memo for any conditions associated with the approval of the

No.	REVISIONS	DATE	BY

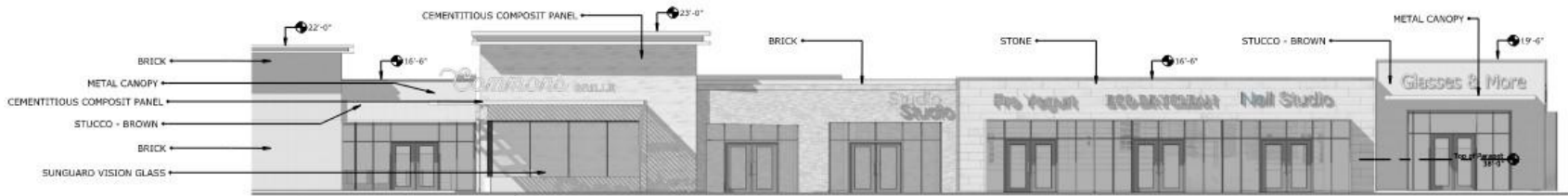


Copyright 2025 GARC LLC

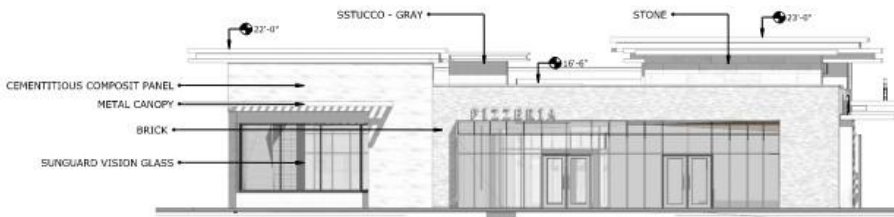
FAÇADE PLAN
A-1



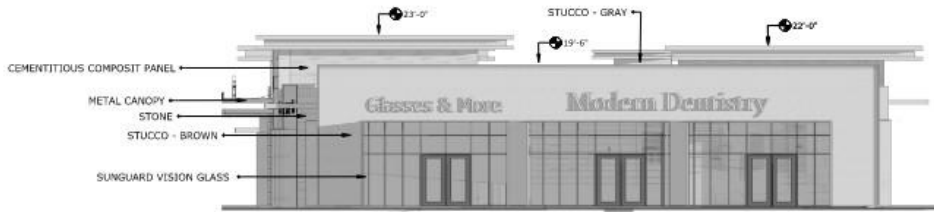
01 BUILDING B- EAST ELEVATION (FRONT) 1-2
SCALE 1/8"=1'-0"



02 BUILDING B- EAST ELEVATION 2-2
SCALE 1/8"=1'-0"



03 BUILDING B- SOUTH ELEVATION (LEFT)
SCALE 1/8"=1'-0"



04 BUILDING B- NORTH ELEVATION (RIGHT)
SCALE 1/8"=1'-0"

EXTERIOR ELEVATIONS NOTES AND MATERIAL LEGEND

1. MATERIAL SYMBOLS ON ELEVATIONS ARE TO DISPLAY THE EXTENT OF THE MATERIAL ONLY. THEY ARE NOT TO SCALE.
2. PROVIDE BRICK EXPANSION NOTES PER THE AMERICAN BRICK INSTITUTES RECOMMENDATIONS

	BRICK - GRAY
	BRICK - BEIGE
	METAL PANEL
	CEMENTITIOUS COMPOSIT PANEL
	STONE
	STUCCO - BROWN
	STUCCO - DARK GRAY
	STUCCO - GRAY
	STUCCO - BEIGE
	STUCCO - LIGHT GRAY



Copyright 2025 QARC LLC



10412 E. NORTHWEST HWY
SUITE 100
DALLAS, TX 75228
214.738.0440

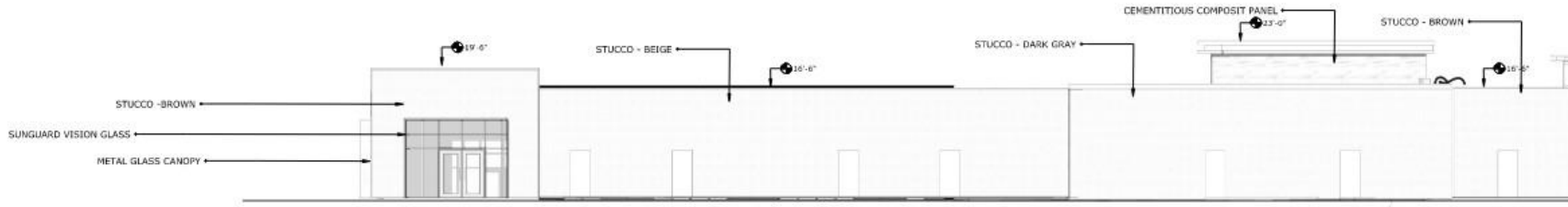
GRAND PRAIRIE SLX HOLDINGS LLC
GRAND PRARIE
BLK 1, PT LT 4
3705 S STATE HWY 161
GRAND PRARIE, TEXAS

ACTION			
APPROVED	STAFF	DATE	INITIALS
	PAZ		

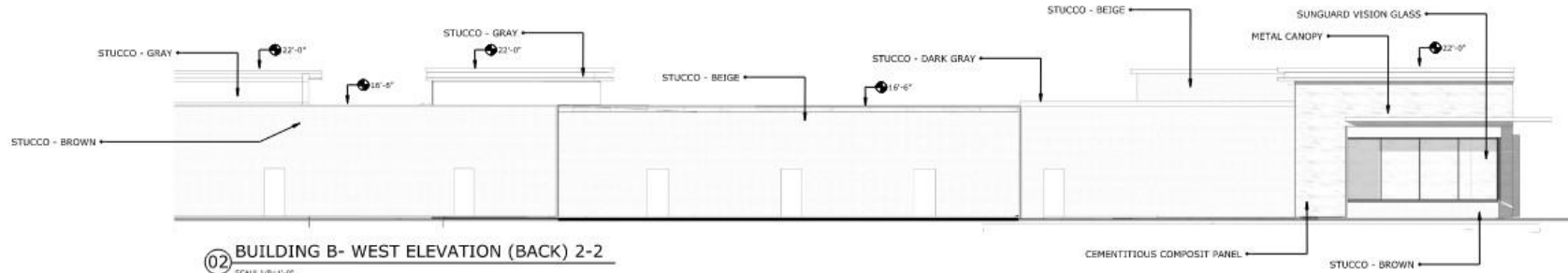
See the Staff Approval Letter or PAZ Memo for any conditions associated with the approval of the

No.	REVISIONS	DATE	BY

FACADE PLAN
A-2



01 BUILDING B- WEST ELEVATION (BACK) 1-2
SCALE 1/8"=1'-0"



02 BUILDING B- WEST ELEVATION (BACK) 2-2
SCALE 1/8"=1'-0"

MATERIAL CALCULATION TABLE

BUILDING B-SOUTH ELEVATION		BUILDING B-NORTH ELEVATION		BUILDING B-WEST ELEVATION		BUILDING B-EAST ELEVATION	
TOTAL SURFACE AREA	2,552 SF	TOTAL SURFACE AREA	2,316 SF	TOTAL SURFACE AREA	6,518 SF	TOTAL SURFACE AREA	6,770 SF
TOTAL GLAZING AREA	721 SF (28%)	TOTAL GLAZING AREA	693 SF (30%)	TOTAL GLAZING AREA	309 SF (5%)	TOTAL GLAZING AREA	3270 SF (48%)
TOTAL SURFACE AREA- GLAZING AREA	1,831 SF	TOTAL SURFACE AREA- GLAZING AREA	1,623SF	TOTAL SURFACE AREA- GLAZING AREA	6, 120 SF	TOTAL SURFACE AREA- GLAZING AREA	3500 SF
BRICK - GRAY	282 SF (11%)	BRICK - GRAY		BRICK - GRAY		BRICK - GRAY	493 SF (7%)
BRICK - BEIGE		BRICK - BEIGE		BRICK - BEIGE		BRICK - BEIGE	506 SF (7%)
METAL PANEL		METAL PANEL		METAL PANEL		METAL PANEL	
CEMENTITIOUS COMPOSIT PANEL	614 SF (24%)	CEMENTITIOUS COMPOSIT PANEL	330 SF (14%)	CEMENTITIOUS COMPOSIT PANEL	516 SF (8%)	CEMENTITIOUS COMPOSIT PANEL	306 SF (5%)
STONE	115 SF (5%)	STONE	90 SF (4%)	STONE		STONE	605 SF (9%)
STUCCO - BROWN	539 SF (21%)	STUCCO - BROWN	1,058 SF (46%)	STUCCO - BROWN	1,505 SF (23%)	STUCCO - BROWN	1,350 SF (20%)
STUCCO - DARK GRAY		STUCCO - DARK GRAY		STUCCO - DARK GRAY	1,705 SF (26%)	STUCCO - DARK GRAY	
STUCCO - GRAY	136 SF (5%)	STUCCO - GRAY		STUCCO - GRAY	220 SF (6%)	STUCCO - GRAY	240 SF (4%)
STUCCO - BEIGE	145 SF (6%)	STUCCO - BEIGE	145 SF (6%)	STUCCO - BEIGE	2,180 SF (33%)	STUCCO - BEIGE	

EXTERIOR ELEVATIONS NOTES AND MATERIAL LEGEND

1. MATERIAL SYMBOLS ON ELEVATIONS ARE TO DISPLAY THE EXTENT OF THE MATERIAL ONLY. THEY ARE NOT TO SCALE.
2. PROVIDE BRICK EXPANSION NOTES PER THE AMERICAN BRICK INSTITUTES RECOMMENDATIONS

	BRICK - GRAY
	BRICK - BEIGE
	METAL PANEL
	CEMENTITIOUS COMPOSIT PANEL
	STONE
	STUCCO - BROWN
	STUCCO - DARK GRAY
	STUCCO - GRAY
	STUCCO - BEIGE
	STUCCO - LIGHT GRAY



10445 E. NORTHWEST HWY
SUITE 100
DALLAS, TX 75238
214.738.5440

GRAND PRAIRIE SLX HOLDINGS LLC
GRAND PRAIRIE
BLK1, PT LT 4
3755 S. STATE HWY 161
GRAND PRAIRIE, TEXAS

APPROVED		DESIGNED	
STAFF	Date	Initials	Date
PAZ			
Neighborhood #			

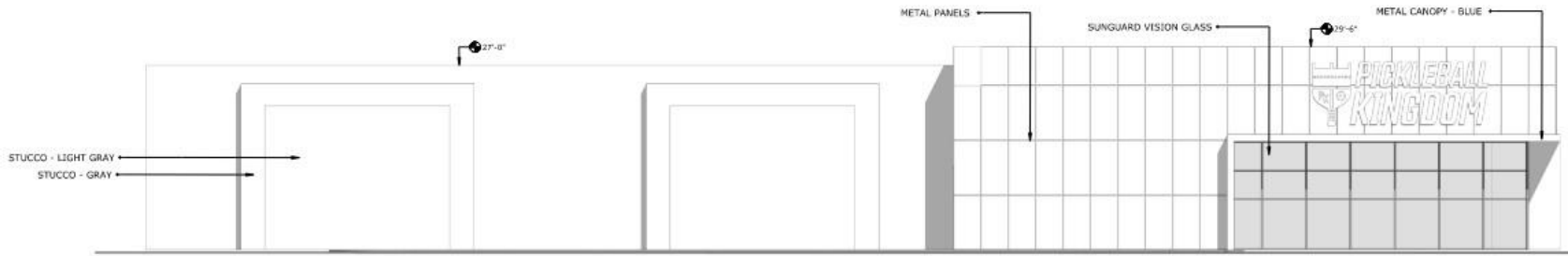
See the Staff Approval Letter or PAZ Memo for any conditions associated with the approval of the

No.	REVISIONS	DATE	BY

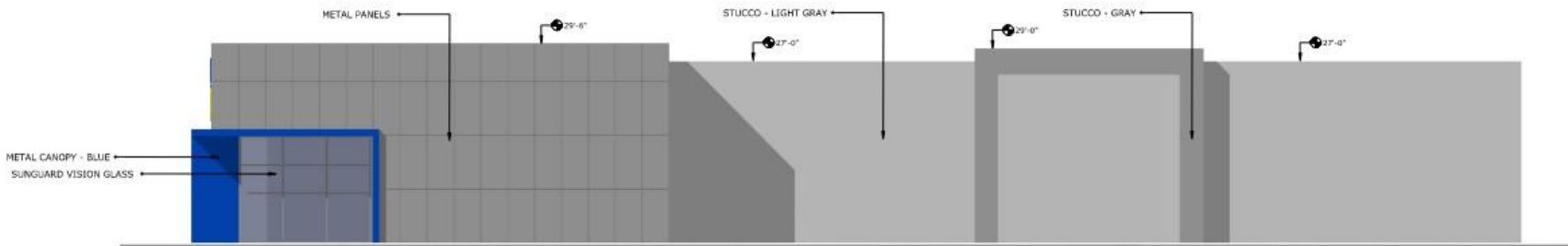


Copyright © 2025 QARC LLC
PLAN NORTH

FAÇADE PLAN
A-3



01 BUILDING C- SOUTH ELEVATION (FRONT)
SCALE 1/8"=1'-0"



02 BUILDING C- EAST ELEVATION (RIGHT)
SCALE 1/8"=1'-0"

MATERIAL CALCULATION TABLE

BUILDING B-SOUTH ELEVATION		BUILDING B-NORTH ELEVATION		BUILDING B-WEST ELEVATION		BUILDING C-EAST ELEVATION	
TOTAL SURFACE AREA	5,642 SF	TOTAL SURFACE AREA	6,031 SF	TOTAL SURFACE AREA	5,466 SF	TOTAL SURFACE AREA	6,287 SF
TOTAL GLAZING AREA	675 SF (12%)	TOTAL GLAZING AREA	6,031 SF	TOTAL GLAZING AREA	5,466 SF	TOTAL GLAZING AREA	312 SF (5%)
TOTAL SURFACE AREA- GLAZING AREA	4,967 SF	TOTAL SURFACE AREA- GLAZING AREA	6,031 SF	TOTAL SURFACE AREA- GLAZING AREA	5,466 SF	TOTAL SURFACE AREA- GLAZING AREA	5975 SF
BRICK - GRAY		BRICK - GRAY		BRICK - GRAY		BRICK - GRAY	
BRICK - BEIGE		BRICK - BEIGE		BRICK - BEIGE		BRICK - BEIGE	
METAL PANEL	1,795 SF (32%)	METAL PANEL		METAL PANEL		METAL PANEL	1,592 SF (25%)
CEMENTITIOUS COMPOSIT PANEL		CEMENTITIOUS COMPOSIT PANEL		CEMENTITIOUS COMPOSIT PANEL		CEMENTITIOUS COMPOSIT PANEL	
STUCCO - LIGHT GRAY	2,660 SF (47%)	STUCCO - LIGHT GRAY	5,288 SF (88%)	STUCCO - LIGHT GRAY	5,181 SF (93%)	STUCCO - LIGHT GRAY	4,078 SF (65%)
STUCCO - BROWN		STUCCO - BROWN		STUCCO - BROWN		STUCCO - BROWN	
STUCCO - DARK GRAY		STUCCO - DARK GRAY		STUCCO - DARK GRAY		STUCCO - DARK GRAY	
STUCCO - GRAY	512 SF (9%)	STUCCO - GRAY	743 SF (12%)	STUCCO - GRAY	403 SF (7%)	STUCCO - GRAY	305 SF (5%)
STUCCO - BEIGE		STUCCO - BEIGE		STUCCO - BEIGE		STUCCO - BEIGE	

EXTERIOR ELEVATIONS NOTES AND MATERIAL LEGEND

1. MATERIAL SYMBOLS ON ELEVATIONS ARE TO DISPLAY THE EXTENT OF THE MATERIAL ONLY. THEY ARE NOT TO SCALE.
2. PROVIDE BRICK EXPANSION NOTES PER THE AMERICAN BRICK INSTITUTES RECOMMENDATIONS.

	BRICK - GRAY
	BRICK - BEIGE
	METAL PANEL
	CEMENTITIOUS COMPOSIT PANEL
	STONE
	STUCCO - BROWN
	STUCCO - DARK GRAY
	STUCCO - GRAY
	STUCCO - BEIGE
	STUCCO - LIGHT GRAY



9345 E. NORTHWEST HWY
SUITE 102
DALLAS, TX 75238
214.738.5440

GRAND PRAIRIE SLX HOLDINGS LLC
GRAND PRARIE
BLK1, PT LT 4
3700 S STATE HWY 161
GRAND PRAIRIE, TEXAS

ACTION			
APPROVED	DATE	INITIALS	REVISIONS
STAFF	Date	Initials	
PAZ	Date	Initials	
Neighborhood #			

See the Staff Approval Letter or PAZ Memo for any conditions associated with the approval of the

No.	REVISIONS	DATE	BY

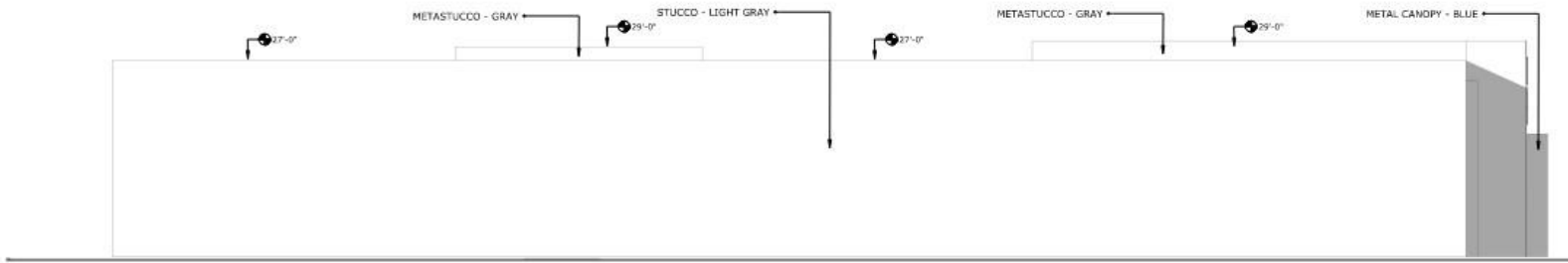


Copyright 2025 QARC LLC

FAÇADE PLAN
A-4



01 BUILDING C- NORTH ELEVATION (BACK)
SCALE: 1/8"=1'-0"



02 BUILDING C- WEST ELEVATION (LEFT)
SCALE: 1/8"=1'-0"

MATERIAL CALCULATION TABLE

BUILDING B-SOUTH ELEVATION		BUILDING B-NORTH ELEVATION		BUILDING B-WEST ELEVATION		BUILDING C-EAST ELEVATION	
TOTAL SURFACE AREA	5,542 SF	TOTAL SURFACE AREA	6,031 SF	TOTAL SURFACE AREA	5,466 SF	TOTAL SURFACE AREA	6,287 SF
TOTAL GLAZING AREA	675 SF (12%)	TOTAL SURFACE AREA- GLAZING AREA	6,031 SF	TOTAL SURFACE AREA- GLAZING AREA	5,466 SF	TOTAL GLAZING AREA	312 SF (5%)
TOTAL SURFACE AREA- GLAZING AREA	4,967 SF					TOTAL SURFACE AREA- GLAZING AREA	5975 SF
BRICK - GRAY		BRICK - GRAY		BRICK - GRAY		BRICK - GRAY	
BRICK - BEIGE		BRICK - BEIGE		BRICK - BEIGE		BRICK - BEIGE	
METAL PANEL	1,795 SF (32%)	METAL PANEL		METAL PANEL		METAL PANEL	1,592 SF (25%)
CEMENTITIOUS COMPOSIT PANEL		CEMENTITIOUS COMPOSIT PANEL		CEMENTITIOUS COMPOSIT PANEL		CEMENTITIOUS COMPOSIT PANEL	
STUCCO - LIGHT GRAY	2,660 SF (47%)	STUCCO - LIGHT GRAY	5,288 SF (88%)	STUCCO - LIGHT GRAY	5,181 SF (93%)	STUCCO - LIGHT GRAY	4,078 SF (65%)
STUCCO - BROWN		STUCCO - BROWN		STUCCO - BROWN		STUCCO - BROWN	
STUCCO - DARK GRAY		STUCCO - DARK GRAY		STUCCO - DARK GRAY		STUCCO - DARK GRAY	
STUCCO - GRAY	512 SF (9%)	STUCCO - GRAY	743 SF (12%)	STUCCO - GRAY	403 SF (7%)	STUCCO - GRAY	305 SF (5%)
STUCCO - BEIGE		STUCCO - BEIGE		STUCCO - BEIGE		STUCCO - BEIGE	

EXTERIOR ELEVATIONS NOTES AND MATERIAL LEGEND

1 MATERIAL SYMBOLS ON ELEVATIONS ARE TO DISPLAY THE EXTENT OF THE MATERIAL ONLY, THEY ARE NOT TO SCALE
2 PROVIDE BRICK EXPANSION NOTES PER THE AMERICAN BRICK INSTITUTES RECOMMENDATIONS

	BRICK - GRAY
	BRICK - BEIGE
	METAL PANEL
	CEMENTITIOUS COMPOSIT PANEL
	STONE
	STUCCO - BROWN
	STUCCO - DARK GRAY
	STUCCO - GRAY
	STUCCO - BEIGE
	STUCCO - LIGHT GRAY



GRAND PRAIRIE SLX HOLDINGS LLC
GRAND PRAIRIE
BLK1, PT LT 4
3755 S STATE HWY 181
GRAND PRAIRIE, TEXAS

ACTION

APPROVED	_____	DENIED	_____
STAFF	_____	Date	_____
PKZ	_____	Date	_____
Neighborhood #	_____	Initials	_____

See the Staff Approval Letter or PKZ Memo for any conditions associated with the approval of the

No.	REVISIONS	DATE	BY



Copyright 2025 GARC LLC

FAÇADE PLAN
A-5













