



FRONT ELEVATION '3 UNIT'
1/4"=1'-0"

NOTE: THE ELEVATIONS AS INDICATIVE OF THE CHARACTER OF THE ELEVATION AND MATERIALS.
THE EXACT ELEVATION DESIGN WILL VARY WITH THE FINAL FLOOR PLAN DESIGN.



RIGHT ELEVATION '3 UNIT'
1/4"=1'-0"

CASE NUMBER: Z191201/CP191201

Date: 05/22/20
Drawn By: TSMJ
Checked By: TSMJ
Revisions:

THIS PLAN IS THE PROPERTY OF M&J TOWNHOMES, INC. AND IS TO BE USED ONLY FOR THE PROJECT AND SITE SPECIFICALLY IDENTIFIED HEREON. IT IS NOT TO BE REPRODUCED, COPIED, REPRODUCED, OR TRANSMITTED IN ANY FORM OR BY ANY MEANS, ELECTRONIC OR MECHANICAL, INCLUDING PHOTOCOPYING, RECORDING, OR BY ANY INFORMATION STORAGE AND RETRIEVAL SYSTEM, WITHOUT THE WRITTEN PERMISSION OF M&J TOWNHOMES, INC. THE USER OF THIS PLAN AGREES TO HOLD M&J TOWNHOMES, INC. HARMLESS FROM ANY AND ALL CLAIMS, DAMAGES, LOSSES, AND EXPENSES, INCLUDING REASONABLE ATTORNEY'S FEES, THAT MAY BE ASSERTED AGAINST M&J TOWNHOMES, INC. BY ANY THIRD PARTY AS A RESULT OF THE USER'S USE OF THIS PLAN.

M&J TOWNHOMES
GRAND PRairie, TEXAS



Sheet No.
A3.1
Project No.
190940A

© copyright 2014. FOR REVIEW ONLY. NOT FOR BIDDING, PERMIT, OR CONSTRUCTION. MICHAEL J. WRIGHT, ARCHITECT, TEXAS REG. # 11030



REAR ELEVATION '3 UNIT'
1/4"=10'

NOTE: THE ELEVATIONS ARE INDICATIVE OF THE CHARACTER OF THE ELEVATION AND MATERIALS.
THE EXACT ELEVATION DESIGN WILL VARY WITH THE FINAL FLOOR PLAN DESIGN.



LEFT ELEVATION '3 UNIT'
1/4"=10'

Date: 05-22-20
Drawn By: TJJJ
Checked By: TJJJ
Revision:

THIS DOCUMENT IS THE PROPERTY OF M. J. WEIGHT & ASSOCIATES, INC. AND IS NOT TO BE REPRODUCED, COPIED, OR TRANSMITTED IN ANY FORM OR BY ANY MEANS, ELECTRONIC OR MECHANICAL, WITHOUT THE WRITTEN PERMISSION OF M. J. WEIGHT & ASSOCIATES, INC. THE INFORMATION CONTAINED HEREIN IS FOR GENERAL INFORMATION ONLY AND IS NOT TO BE USED AS A BASIS FOR ANY DECISIONS OR ACTIONS.

M. J. WEIGHT &
ASSOCIATES, INC.
ARCHITECTS
151 TOWNHOMES
GRAND PRairie, TEXAS



M. J. WEIGHT & ASSOCIATES, INC.
2025 WINDHOLM DRIVE, SUITE 100
GRAND PRairie, TEXAS 75050
OFFICE: 817-368-8888
FAX: 817-368-8888
WWW.MJWEIGHT.COM

Sheet No.
A3.2
Project No.
15050-10A

© copyright 2014. FOR REVIEW ONLY. NOT FOR BIDDING, PERMIT, OR CONSTRUCTION. DDB/BEL/J.WEIGHT/ARCHITECT TEXAS REG.# 11030



FRONT ELEVATION '2 UNIT'
1/4"=10"

NOTE: THE ELEVATIONS AS INDICATIVE OF THE CHARACTER OF THE ELEVATION AND MATERIALS;
THE EXACT ELEVATION DESIGN WILL VARY WITH THE FINAL FLOOR PLAN DESIGN.



RIGHT ELEVATION '2 UNIT'
1/4"=10"

Date: 05/22/14
Drawn By: TJJ
Checked By: TJJ
Revision:

THIS DOCUMENT IS THE PROPERTY OF M&J ARCHITECTS, INC. AND IS NOT TO BE REPRODUCED OR TRANSMITTED IN ANY FORM OR BY ANY MEANS, ELECTRONIC OR MECHANICAL, INCLUDING PHOTOCOPYING, RECORDING, OR BY ANY INFORMATION STORAGE AND RETRIEVAL SYSTEM, WITHOUT THE WRITTEN PERMISSION OF M&J ARCHITECTS, INC. THE USER OF THIS DOCUMENT AGREES TO HOLD M&J ARCHITECTS, INC. HARMLESS FROM AND AGAINST ALL SUCH REPRODUCTION OR TRANSMISSION.

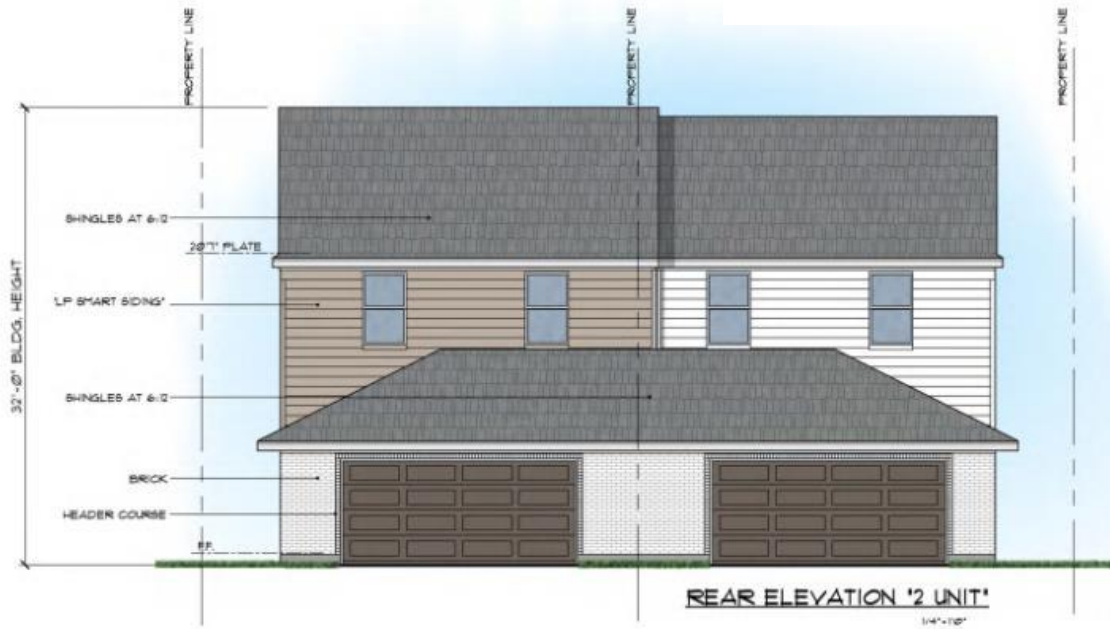
M&J ARCHITECTS
GRAND PRAIRIE, TEXAS



M&J ARCHITECTS, INC.
ARCHITECTS & INTERIORS, INC. A.S. ARCHITECTS, INC.
1300 WEST 10TH STREET, SUITE 100
GRAND PRAIRIE, TEXAS 75049
OFFICE: 817-768-8888 FAX: 817-768-8888
WWW.MANDJARCHITECTS.COM

Sheet No.
A3.3
Project No.
1307840A

© copyright 2014 FOR REVIEW ONLY NOT FOR BIDDING, PERMIT, OR CONSTRUCTION DIS-BEL J. BRIGHT, ARCHITECT, TEXAS REG. #118P



REAR ELEVATION '2 UNIT'

1/4"=1'-0"

NOTE: THE ELEVATIONS ARE INDICATIVE OF THE CHARACTER OF THE ELEVATION AND MATERIALS;
THE EXACT ELEVATION DESIGN WILL VARY WITH THE FINAL FLOOR PLAN DESIGN.



LEFT ELEVATION '2 UNIT'

1/4"=1'-0"

Date: 08/22/22
Drawn By: TMM
Checked By: TMM
Revisions:

THESE PLANS AND SPECIFICATIONS ARE THE PROPERTY OF M&J ARCHITECTS & ASSOCIATES, INC. AND ARE TO BE USED ONLY FOR THE PROJECT AND SITE SPECIFICALLY IDENTIFIED HEREON. ANY REUSE OR MODIFICATION OF THESE PLANS WITHOUT THE WRITTEN CONSENT OF M&J ARCHITECTS & ASSOCIATES, INC. IS STRICTLY PROHIBITED. M&J ARCHITECTS & ASSOCIATES, INC. IS NOT RESPONSIBLE FOR ANY ERRORS OR OMISSIONS IN THESE PLANS.

M&J ARCHITECTS & ASSOCIATES, INC.
ARCHITECTS
GRAND PRAIRIE, TEXAS



M&J ARCHITECTS & ASSOCIATES, INC.
2225 HICKORY CREEK DRIVE, SUITE 200, GRAND PRAIRIE, TEXAS 75050
OFFICE: 972.268.8888 FAX: 972.268.8888
WWW.M&JARCHITECTS.COM

Sheet No.
A3.4
Project No.
1809810A

© copyright 2014. FOR REVIEW ONLY. NOT FOR BIDDING, PERMIT, OR CONSTRUCTION. MICHAEL J. BRECHT, ARCHITECT, TEXAS REG.# 11340



NOTE: THE ELEVATIONS ARE INDICATIVE OF THE CHARACTER OF THE ELEVATION AND MATERIALS. THE EXACT ELEVATION DESIGN WILL VARY WITH THE FINAL FLOOR PLAN DESIGN.



Date 05/22/20
Drawn By TJSJ
Checked By TJSJ
Revised

THIS DOCUMENT IS THE PROPERTY OF H.S. WRIGHT & ASSOCIATES, INC. IT IS TO BE USED ONLY FOR THE PROJECT AND SITE SPECIFICALLY IDENTIFIED HEREIN. IT IS NOT TO BE REPRODUCED, COPIED, OR TRANSMITTED IN ANY FORM OR BY ANY MEANS, ELECTRONIC OR MECHANICAL, INCLUDING PHOTOCOPYING, RECORDING, OR BY ANY INFORMATION STORAGE AND RETRIEVAL SYSTEM, WITHOUT THE WRITTEN PERMISSION OF H.S. WRIGHT & ASSOCIATES, INC.

H.S. WRIGHT & ASSOCIATES
161 TOWNHOMES
GRAND PRAIRIE, TEXAS



Sheet No.
A3.5
Project No.
780584-04

© copyright 2014. EDC BEVIEW ONLY NOT FOR BIDDING, PERMIT, OR CONSTRUCTION. DCS/BEL J. WRIGHT, ARCHITECT, TEXAS REG.# 1130



REAR ELEVATION '4 UNIT'
1/4"=1'-0"

NOTE: THE ELEVATIONS ARE INDICATIVE OF THE CHARACTER OF THE ELEVATION AND MATERIALS. THE EXACT ELEVATION DESIGN WILL VARY WITH THE FINAL FLOOR PLAN DESIGN.



LEFT ELEVATION '4 UNIT'
1/4"=1'-0"

Date 05/22/20
Drawn By TLUJ
Checked By TLUJ
Revisions

STATE OF TEXAS
COUNTY OF TARRANT
CITY OF GRAND PRAIRIE
I, _____, Architect, do hereby certify that the above is a true and correct copy of the plans as filed in my office for the purpose of recording the same.

M. TOWNACRES
GRAND PRAIRIE, TEXAS



M. WRIGHT & ASSOCIATES, INC.
ARCHITECTURAL SERVICES
1015 S. WEST ST. STE. 100
OFFICE: 817/484-8888 FAX: 817/484-8888
WWW.MWRIGHTINC.COM

Sheet No.
A3.6
Project No.
1805540A

© copyright 2014 FOR REVIEW ONLY, NOT FOR BIDDING, PERMIT, OR CONSTRUCTION. MICHAEL J. WRIGHT, ARCHITECT TEXAS REG.# 11130