

APPENDIX X : INDUSTRIAL DEVELOPMENT STANDARD

SECTION 4 - BUILDING DESIGN STANDARDS FOR INDUSTRIAL DEVELOPMENT – ELEMENTS

ELEVATION	TYPE	a	b	c	d	e	f	g	h	i	TOTAL
NORTH	PRIMARY	Y	Y	N	N	Y	Y	Y	N	N	5
EAST	PRIMARY	Y	N	N	N	Y	Y	Y	N	N	4
SOUTH	SECONDARY	Y	N	N	N						1
WEST	SECONDARY	Y	N	N	N						1

PRIMARY BUILDING FACADE

NORTH

- 2a. REQUIRED T&T WALL CONCRETE WITH MIN 2 INCH REVEALS
= 50% MIN OF FACADE TOTAL = 13.41 SF 58.1% PROVIDED
- 2b. REQUIRED MIN GLASS FACADE = 15% OF FACADE 18.5% PROVIDED
- 2c. ELEVATION HEIGHT = 59'-2"
ELEVATION MIN VERTICAL ARTICULATION (BLDG HT + 5') = 3'-0" 4'-0" PROVIDED
- ELEVATION LENGTH = 260'-11"
ELEVATION MIN SPAN OF VERTICAL ARTICULATION (BLDG LENGTH x 15%) = 39'-3" 98'-0" PROVIDED
- 2f. REQUIRED ACCENT LIGHTING MIN 50% OF LENGTH OF EACH FACADE = 130'-4" 160'-6" PROVIDED
- 2g. REQUIRED COLONNADA MIN 50% OF LENGTH OF EACH FACADE = 130'-4" 165'-4" PROVIDED

EAST

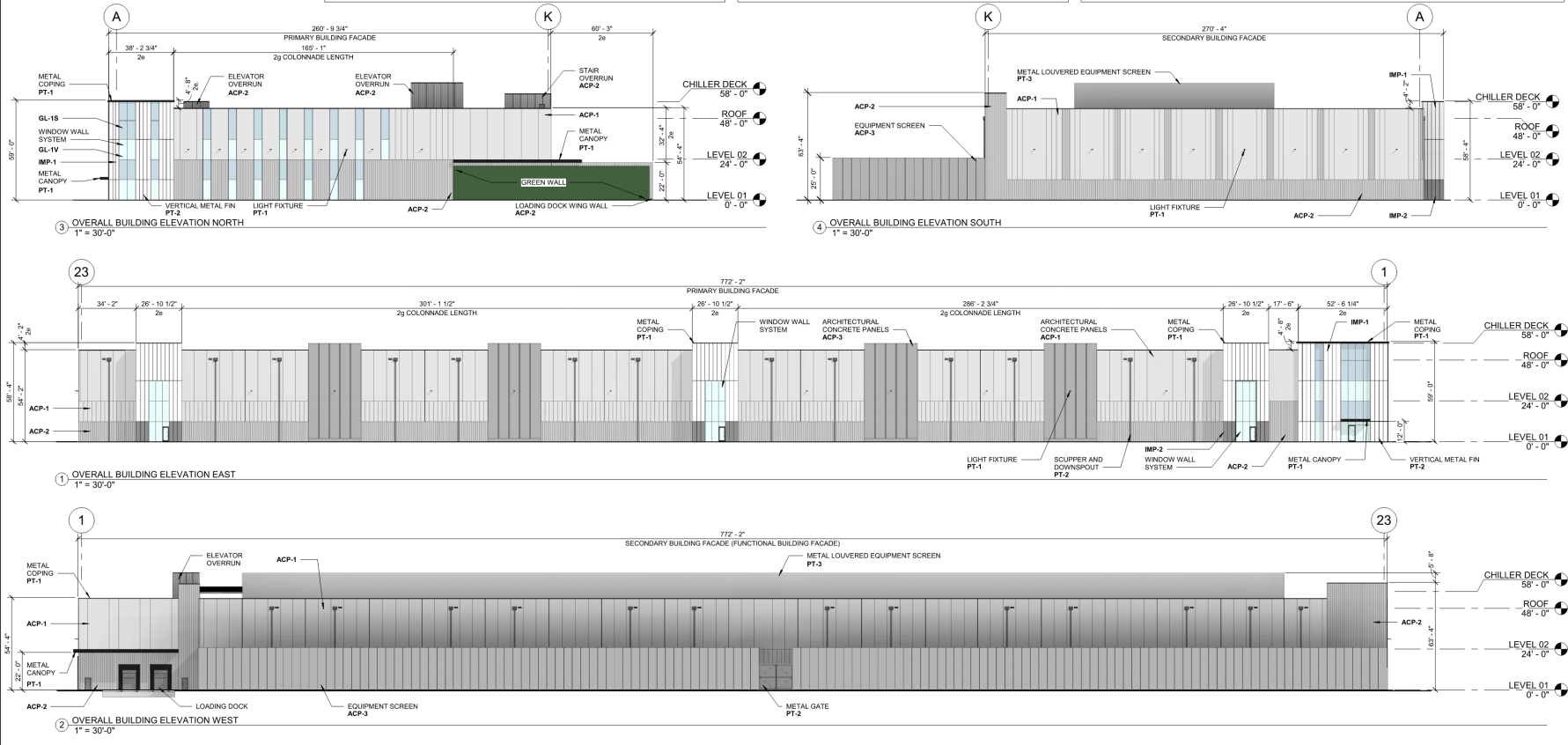
- 2a. REQUIRED T&T WALL CONCRETE WITH MIN 2 INCH REVEALS
= 50% MIN OF FACADE TOTAL= 17,547 SF 81.8% PROVIDED
- 2b. ELEVATION HEIGHT = 59'-2"
ELEVATION MIN VERTICAL ARTICULATION (BLDG HT + 5') = 3'-0" 4'-0", 32'-4" PROVIDED
- ELEVATION LENGTH = 772'-0"
ELEVATION MIN SPAN OF VERTICAL ARTICULATION (BLDG LENGTH x 15%) = 115'-8" 91'-0", 80'-3" PROVIDED
- 2f. REQUIRED ACCENT LIGHTING MIN 50% OF LENGTH OF EACH FACADE = 386'-0" 587'-0" PROVIDED
- 2g. REQUIRED COLONNADA MIN 50% OF LENGTH OF EACH FACADE = 386'-0" 587'-0" PROVIDED

MATERIAL CALC		
PRIMARY BUILDING FACADE		
NORTH		
ARCHITECTURAL CONCRETE WALL PANEL = 9,583 SF		58.1%
WINDOW WALL = 3,043 SF		18.5%
INSULATED METAL WALL PANEL = 1,347 SF		8.2%
METAL ACCENT CANOPY = 194 SF		1.2%
GREEN WALL = 2,315 SF		14%
TOTAL FACADE AREA = 20,533 SF		100%
EAST		
ARCHITECTURAL CONCRETE WALL PANEL = 35,095 SF		81.8%
WINDOW WALL = 1,341 SF		3.1%
INSULATED METAL WALL PANEL = 3,383 SF		11.9%
METAL ACCENT CANOPY = 0 SF		0.2%
TOTAL FACADE AREA = 42,920 SF		100%
SOUTHERN BUILDING FACADE		
SOUTH		
ARCHITECTURAL CONCRETE WALL PANEL = 17,058 SF		90.7%
WINDOW WALL = 0 SF		0%
INSULATED METAL WALL PANEL = 0 SF		0%
METAL ACCENT CANOPY = 0 SF		0%
MISC = 1,742 SF		9.3%
TOTAL FACADE AREA = 18,800 SF		100%
WEST		
ARCHITECTURAL CONCRETE WALL PANEL = 41,536 SF		98.0%
WINDOW WALL = 4 SF		0%
INSULATED METAL WALL PANEL = 0 SF		0%
METAL ACCENT CANOPY = 125 SF		0.3%
MISC = 1730 SF		1.7%
TOTAL FACADE AREA = 42,391 SF		100%

<u>EXTERIOR GLAZING - GL</u>	<u>ARCHITECTURAL CONCRETE PANELS - APC</u>
GL-1V 1" INSULATED / LOW-E VISION GLASS GLASS SELECTION: OPTION 01: VIRACON VNE1-63 GLASS SELECTION: OPTION 01: GUARDIAN SNG 62/27 ON CLEAR LOCATION: TYPICAL VISION GLAZING	APC-1C COLOR: LIGHT GRAY FINISH (TYPICAL FINISH U.N. 0) LOCATION: OVERALL BUILDING (REF ELEVATION) BOO: TBD
GL-1S 1" INSULATED / LOW-E SPANDREL GLASS W/ SOLID CERAMIC FIT IN MANUFACTURER'S STANDARD COLOR ON #4 SURFACE GLASS SELECTION: OPTION 01: VIRACON VNE1-63 GLASS SELECTION: OPTION 02: GUARDIAN SNG 62/27 ON CLEAR LOCATION: TYPICAL SPANDREL GLAZING	APC-2 COLOR: MEDIUM GRAY FINISH (VERTICALLY STRIATED) LOCATION: OVERALL BUILDING (REF ELEVATION) BOO: TBD
	APC-3 COLOR: MEDIUM GRAY FINISH LOCATION: OVERALL BUILDING (REF ELEVATION) BOO: TBD
<u>INSULATED METAL WALL PANEL SYSTEM (IMP)</u>	<u>PANT</u>
IMP-1 BOO: KANSIPAN QUADCORE OPTIMO COLOR: ASCOT WHITE LOCATION: PRIMARY FACADE AND STAIR/ELEVATOR ENCLOSURE	PT-1 BOO: TBD COLOR: DARK GRAY (TBD)
IMP-2 BOO: KANSIPAN QUADCORE OPTIMO COLOR: DARK GRAY LOCATION: PRIMARY FACADE AND STAIR/ELEVATOR ENCLOSURE	PT-2 BOO: TBD COLOR: MEDIUM GRAY (TBD)
	PT-3 BOO: TBD COLOR: LIGHT GRAY (TBD)
<u>METAL COVERED SCREENING WALL SYSTEM (LV)</u>	
LV-1 BOO: TBD COLOR: COLOR TO MATCH PT-3 LOCATION: ROOF CHILLER SCREEN	

[illegible]

keyplan



registration



**BURNS
MCDONNELL®**
9400 WARD PARKWAY
KANSAS CITY, MO 64114

date	detailed
03 DEC 2024	JM
designed	checked
JM	AP



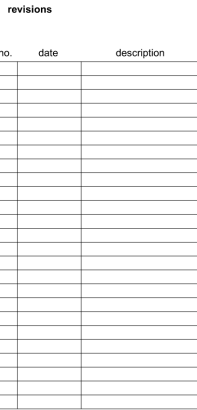
package

ROCK ISLAND TEST FIT

BMCD PROJ #173575

sheet title
BUILDING ELEVATIONS

sheet number



registration

**BURNS
MCDONNELL®**
9400 WARD PARKWAY
KANSAS CITY, MO 64114



sheet number 201