

# Exhibit D - Building Elevations Page 1 of 1

## Building Design Summary

Facade	Glass & Doors		Finished Wall		Primary Material(s)		Accent Material(s)	
	Area	% of Finished Wall	Area	% of Finished Wall	Area	% of Finished Wall	Area	% of Finished Wall
North	822 sf	4,566 sf	Brick Stone	7,670 sf	83%	Cast Stone	88sf	1%
East	337 sf	4,381 sf	Brick Stone	7,670 sf	75%	Cast Stone	32 sf	>1%
South (Primary)	1254 sf	4,391 sf	Brick Stone	6,693 sf	77%	Cast Stone	128 sf	2%
West	304 sf	4,041 sf	Brick Stone	7,188 sf	88%	Cast Stone	34 sf	>1%

Facade	Covered Walkway/Portico		Window/Closet*	
	Area (sq ft)	% of Finished Wall	Area (sq ft)	% of Finished Wall
North	151 - sf	4%	153 - sf	3%
East	162 - sf	3%	52 - sf	2%
South (Primary)	243 - sf	3%	133 - sf	4%
West	102 - sf	2%	52 - sf	2%

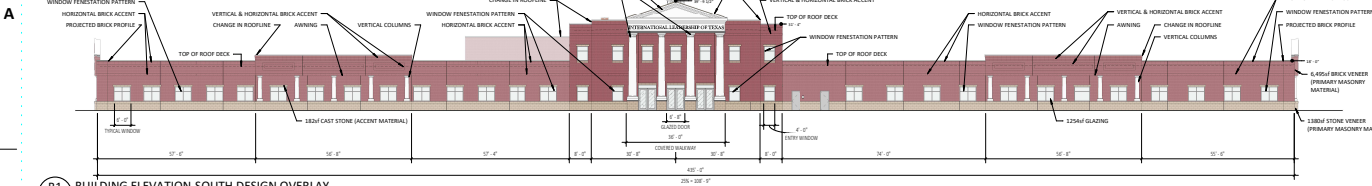
\* If shading has been provided as possible given layout and cost of building interior. Limitations related to sun, layout, fire rating, and storm shelter requirements do not allow for the full amount of glazing specified.

### Compliance with Appendix F requirements of the UDC for exterior materials, design, and articulation is achieved through the following:

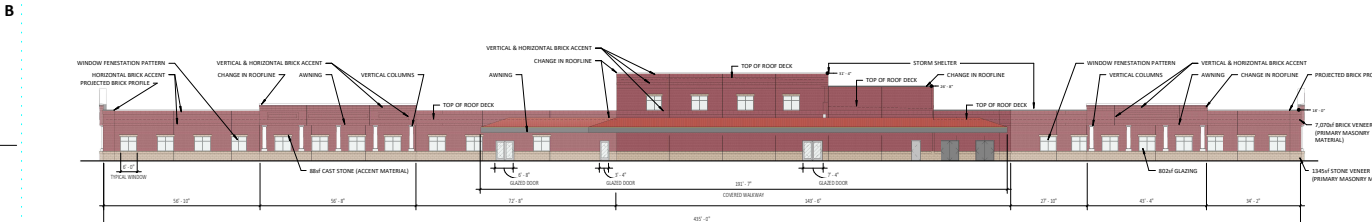
- Brick and stone are the primary facade materials, which comply with the Principal Masonry Requirement base standard.
- The brick red and beige tones of the stone comply with the requirement for "low reflectance, subtle, neutral, or earth tone color" in the Color Base standard.
- The base standard for vertical and horizontal articulation is provided for with brick banding/gutters/change in bond/texture, fenestration patterns, modulation of the facade, variation in the roofline, and changes in material with brick, and stone.
- Covered walkways, porches, and awnings are provided to satisfy the base standard requiring them along at least 25% of the facade.
- Roof variation and modulation of the facade plane are used to break the facade into smaller sections in compliance with the base standard applying to facades in excess of 120' in length.

### Building Design Menu items (if required, 7 provided)

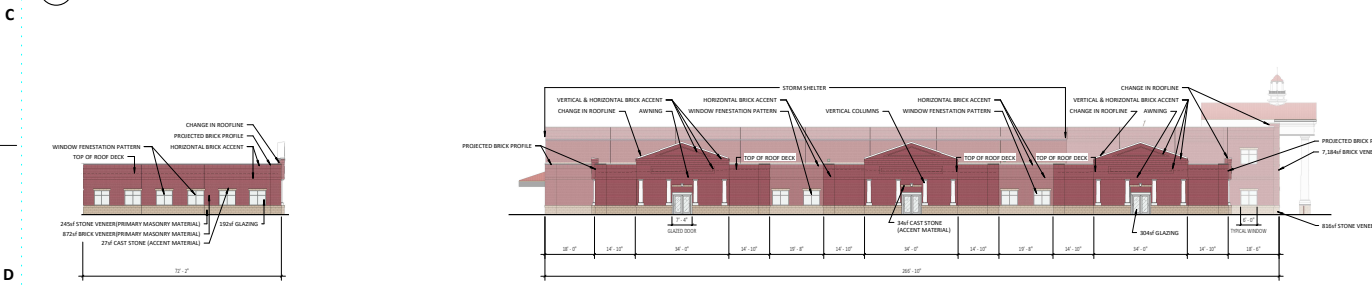
- Color Contrast**  
Brick, stone and EPS decorative elements will provide contrasting colors.
- Cornice Treatment**  
Articulation of masonry at cornice provides emphasis.
- Architectural Public Entrance**  
Projected facade, multiple double door entrances, and large columns articulate the main entrance.
- Articulation Elements**  
See elements & dimensions noted on elevations. Noted elements are limited to 3" required and may not be comprehensive for all areas.
- Enhanced Windows**  
Multiple types of windows provided.
- Design Elements**  
Variation in brick coursing and projection is used to create breaks and banding, and recession of the side entrances create overhang eaves.
- Roof Profile Variation**  
Roof profile includes varying parapet heights and areas of gabled roof to provide distinctive roof profile.



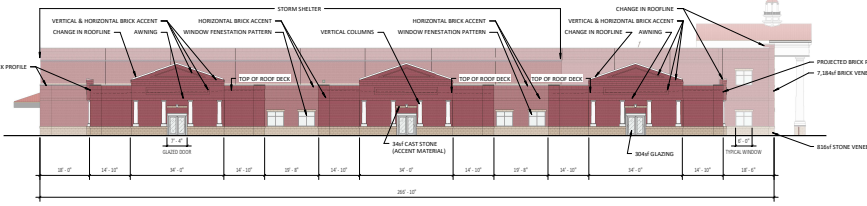
**B1 BUILDING ELEVATION-SOUTH DESIGN OVERLAY**  
G3.01 1/16" = 1'-0"



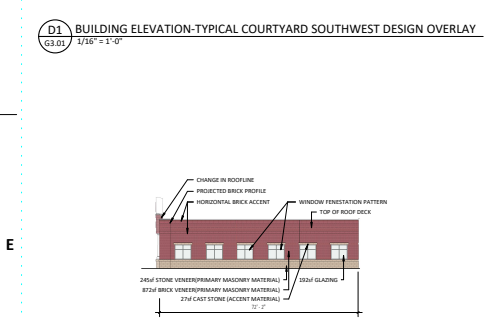
**C1 BUILDING ELEVATION-NORTH DESIGN OVERLAY**  
G3.01 1/16" = 1'-0"



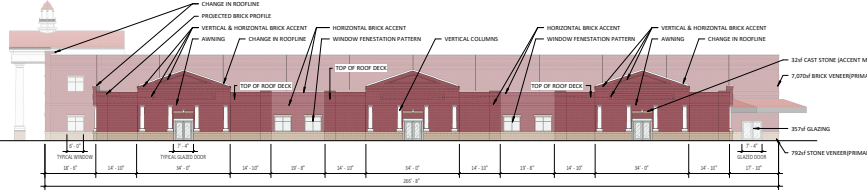
**D1 BUILDING ELEVATION-TYPICAL COURTYARD SOUTHWEST DESIGN OVERLAY**  
G3.01 1/16" = 1'-0"



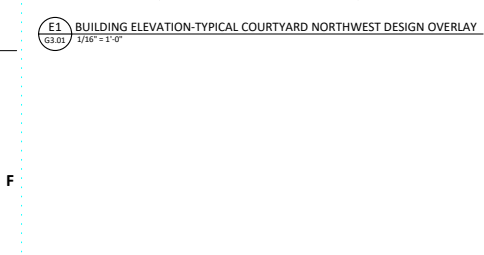
**D3 BUILDING ELEVATION-TYPICAL COURTYARD WEST DESIGN OVERLAY**  
G3.01 1/16" = 1'-0"



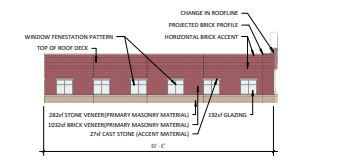
**E1 BUILDING ELEVATION-TYPICAL COURTYARD NORTHWEST DESIGN OVERLAY**  
G3.01 1/16" = 1'-0"



**E3 BUILDING ELEVATION-TYPICAL COURTYARD EAST DESIGN OVERLAY**  
G3.01 1/16" = 1'-0"



**F3 BUILDING ELEVATION-TYPICAL COURTYARD SOUTHEAST DESIGN OVERLAY**  
G3.01 1/16" = 1'-0"



**F5 BUILDING ELEVATION-TYPICAL COURTYARD NORTHEAST DESIGN OVERLAY**  
G3.01 1/16" = 1'-0"



PIVOT NORTH, PLLC  
1101 W. GROVE STREET  
BOISE, ID 83702  
www.pivnorthdesign.com

STAMP

Project: ILL TEXAS HERITAGE K-8  
1305-B ROAD 5714 CLEVELAND, TEXAS 77337

Revisions  $\Delta$

Project No: 2106  
Date: 10/20/22  
Created By: CS  
Drawn By: AJ

Sheet Name:  
BUILDING DESIGN  
OVERLAY DISTRICT

Sheet No:

G3.01