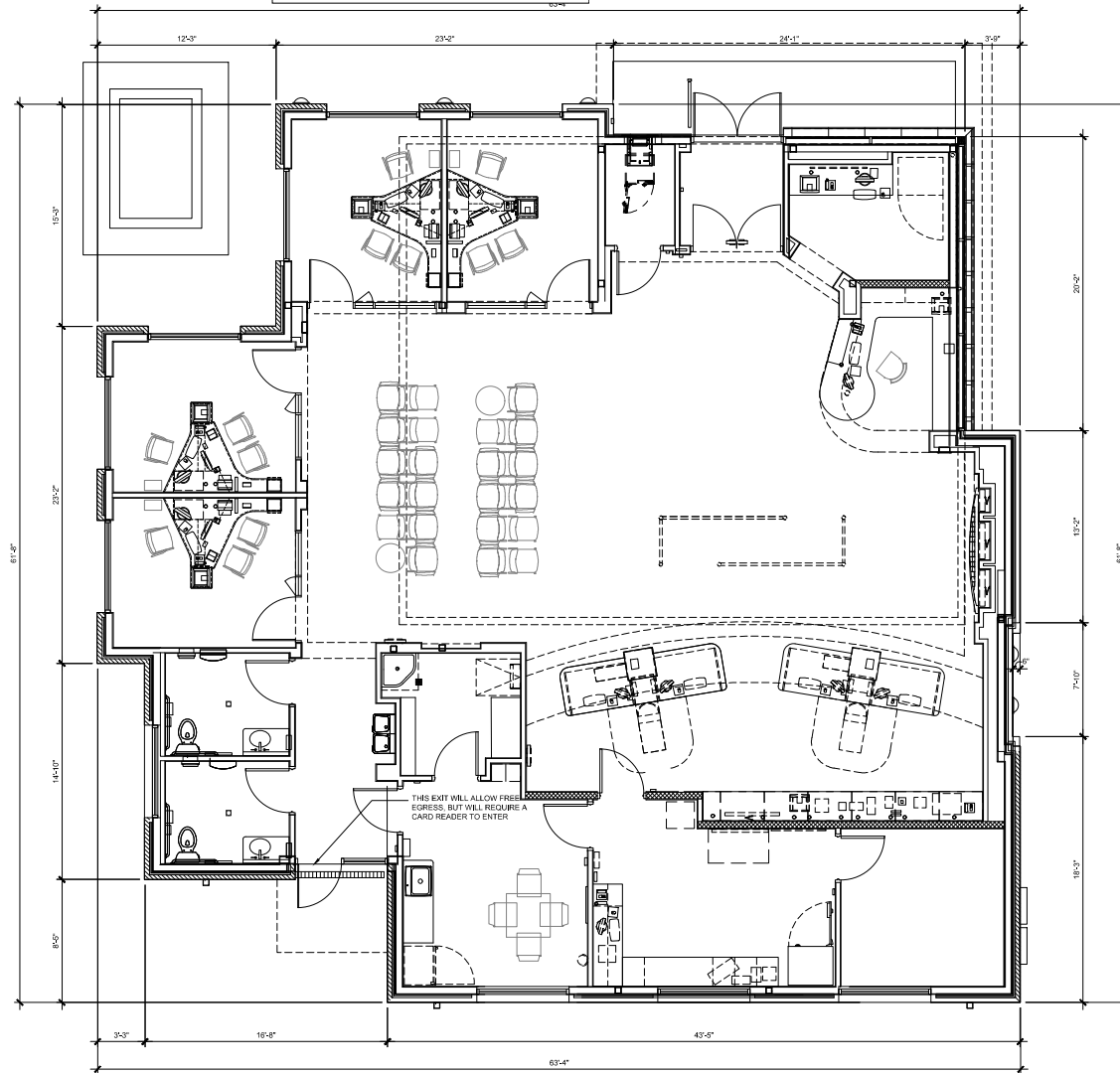


Exhibit D - Building Elevations
Page 1 of 1



1 FLOOR PLAN
SCALE: 1/4" = 1'-0"

Permitting Notes:

Any owner or owner's authorized agent who intends to construct, enlarge, alter, install, repair any structure, electrical, plumbing, gas, or mechanical system, shall first make application to the Building Inspection Dept. and obtain all applicable permits. (Ref. 2021 IRC, 105.1)

All construction shall comply with the latest adopted ICC Codes, Unified Development Code and Code of Ordinances as exists at the time of application submitted for the permit. The City has adopted the 2021 ICC Codes and 2023 NEC.

A building or structure shall not be used or occupied in whole or in part, and a change in the existing use or occupancy classification of a building or structure or portion thereof shall not be made, until a certificate of occupancy has been applied for and issued. Issuance of a certificate of occupancy shall not be construed as an approval of a violation of the provisions of this code or of other ordinances of the jurisdiction. (Ref. 2021 IRC, 111.1 Use and occupancy)



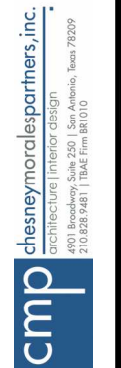
FLOOR PLAN

© 2024 Chesney Morales Partners, Inc.
All rights reserved. No part of this document may be reproduced or utilized in any form without prior written authorization of Chesney Morales Partners, Inc.

THIS DOCUMENT IS INCOMPLETE AND IS NOT TO BE USED FOR REGULATORY, APPROVAL, PERMIT, OR CONSTRUCTION. CHESNEY MORALES PARTNERS, INC. FREDERICK P. LEDTKA TEXAS REG. 14737

REVISIONS		
NO.	DATE	DESCRIPTION

A NEW BRANCH OFFICE for
RANDOLPH ☆ BROOKS
Federal Credit Union
President George Bush Highway
Grand Prairie, Texas



JOB NO: 2412
DATE: 04/05/24
DRAWN BY: PAS
CHECKED BY: FFL
SHEET

A2.1

THIS DOCUMENT IS
INCOMPLETE AND IS
NOT TO BE USED FOR
REGULATORY,
APPROVAL, PERMIT,
OR CONSTRUCTION
CHECKS. NO PARTS
PARTNERS, INC.
FREDERICK P. LEDTKE
TEXAS REG. 14737

REV.	DATE	DESCRIPTION

A NEW BRANCH OFFICE for
RANDOLPH ☆ BROOKS
Federal Credit Union
3162 S. Hwy 161
Grand Prairie, Texas



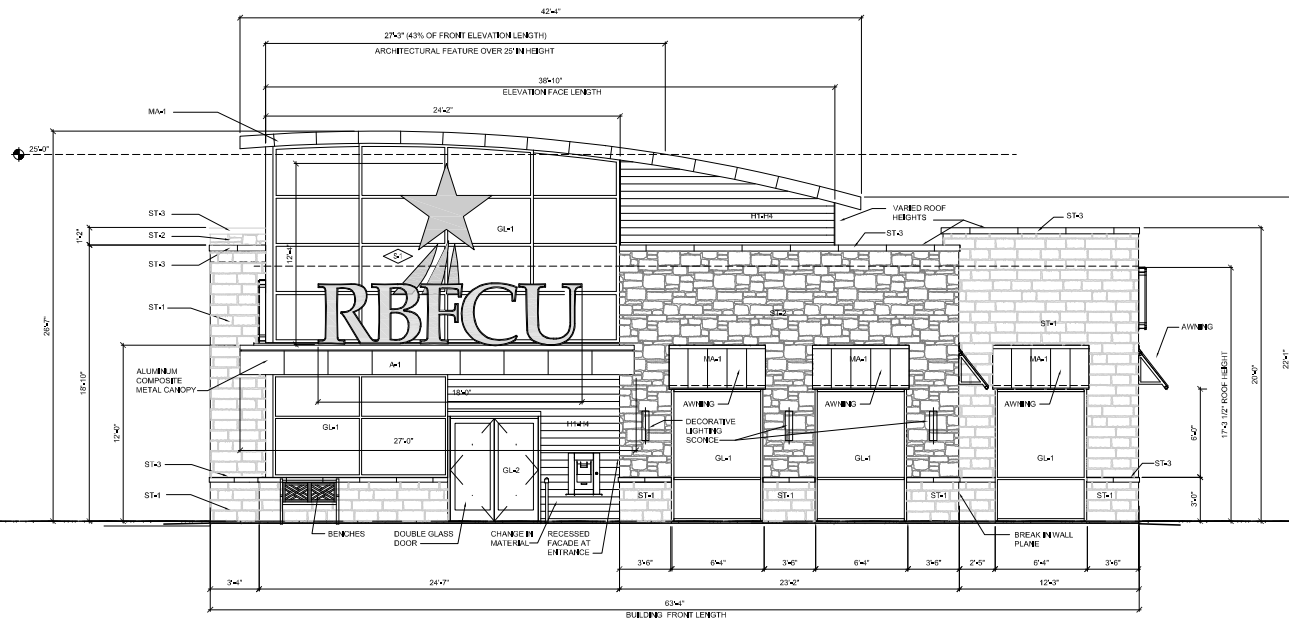
cmp chesneymoralespartners, inc.
architecture | interior design
4001 Broadway, Suite 250 | San Antonio, Texas 78209
210.828.9481 | TBAE Firm BR1010

JOB NO: 2412
DATE: 04/25/24
DRAWN BY: PAS
CHECKED BY: FFL
SHEET

A3.1

EXTERIOR ELEVATIONS

©2024 Chesney Morales Partners, Inc.
All rights reserved. No part of this
document may be reproduced or utilized
in any form without prior written authorization
of Chesney Morales Partners, Inc.



1 WEST ELEVATION (FRONT)
SCALE: 1/4" = 1'-0"

MATERIAL LEGEND

- ST-1: CORDOVA CREAM, CHOPPED FACE AND SIDES, RUBBING BOND, 4" THICK
- ST-2: LEUDERS WALNUT LIMESTONE, ROCK FACE, RANDOM ASHLAR, 4" THICK
- ST-3: CAST STONE, COLOR TO BE "BUFF"
- H-1: PAINTED CEMENTITIOUS FIBERBOARD (HARDE PLANK) COLOR TO BE B-111638 MEADOWLARK
- H-2: PAINTED CEMENTITIOUS FIBERBOARD (HARDE PLANK) COLOR TO BE B-111638 MEADOWLARK
- H-3: PAINTED CEMENTITIOUS FIBERBOARD (HARDE PLANK) COLOR TO BE B-111638 MEADOWLARK
- H-4: PAINTED CEMENTITIOUS FIBERBOARD (HARDE PLANK) COLOR TO BE B-111638 MEADOWLARK
- P-2: PAINTED STUCCO COLOR TO BE B-111638 MEADOWLARK
- A-1: AT CANOPIES - PREFINISHED COMPOSITE ALUMINUM PANELS, CLEAR ANODIZED
- MA-1: AT ROOF AND AT AWNINGS - STANDING SEAM METAL ROOF, BURFORD MANUFACTURING CO., LEADCOTE (20 YEAR FINISH WARRANTY)
- GL-1: SOLARBAN 70XL ON SOLEX GLASS CLEAR ANODIZED FRAMES
- GL-2: CLEAR TEMPERED GLASS CLEAR ANODIZED FRAMES

MATERIAL CALCULATIONS

MATERIAL	AREA	PERCENTAGE
STONE ST-1: CORDOVA CREAM, CHOPPED FACE, RUBBING BOND	309 S.F.	37
STONE ST-2: LEUDERS WALNUT LIMESTONE, ROCK FACE, RANDOM ASHLAR	282 S.F.	35
STONE ST-3: CAST STONE, BUFF COLOR	30 S.F.	4
P-2 (3) PROCESS STUCCO, PAINTED	0 S.F.	0
H-1 TO H-4: CEMENTITIOUS FIBERBOARD (HARDE PLANK), PAINTED	136 S.F.	17
TOTAL MASONRY	757 S.F.	83
A-1: PREFINISHED COMPOSITE ALUMINUM PANELS, CLEAR ANODIZED	54 S.F.	7
MA-1: ROOF NOT INCLUDED IN CALCULATIONS	0 S.F.	0
METAL LOUVERS, PAINTED TO MATCH H-4	0 S.F.	0
TOTAL ACCENT MATERIALS	54 S.F.	7
TOTAL GLAZING	628 S.F.	44

TOTAL SURFACE AREA OF FACADE 1,439 S.F.
TOTAL SURFACE AREA OF FACADE LESS OPENINGS 811 S.F.

MATERIAL COMPLIANCE SUMMARY - EXCLUDING ROOF

FACADE NAME	TOTAL AREA	OPENING AREA	TOTAL MINUS OPENINGS	% PRIMARY MASONRY	% SECONDARY MASONRY	% ACCENT MATERIAL
WEST (FRONT)	1,439 S.F.	628 S.F.	811 S.F.	76 %	17 %	7 %
SOUTH	1,431 S.F.	189 S.F.	1,242 S.F.	87 %	12 %	1 %
EAST (REAR)	1,502 S.F.	171 S.F.	1,331 S.F.	86 %	6 %	8 %
NORTH	1,557 S.F.	496 S.F.	1,061 S.F.	87 %	8 %	5 %

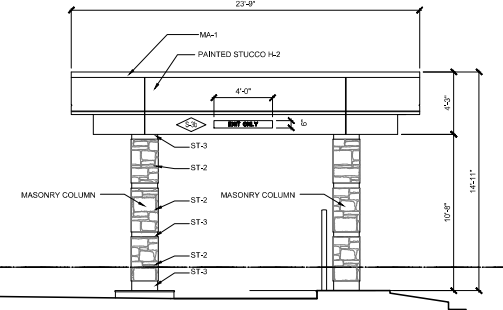
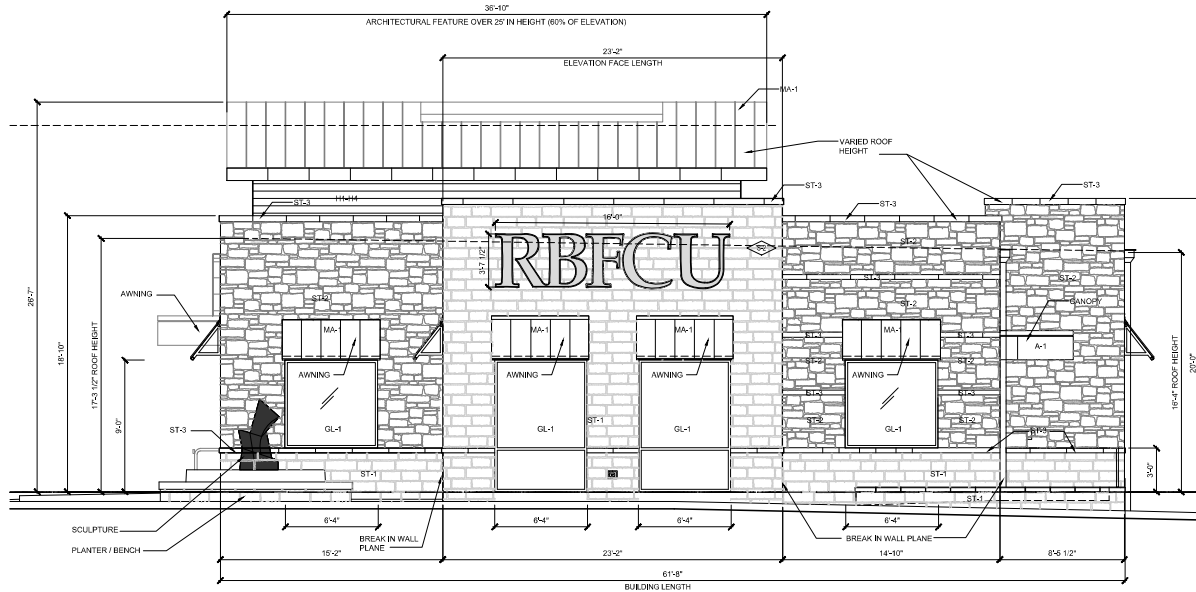
WINDOWS AND CANOPIES COMPLIANCE SUMMARY

STANDARD	REQUIRED	PROVIDED	MEETS
LENGTH OF WINDOWS AT PRIMARY FACADE	30 %	44 %	YES
LENGTH OF WINDOWS AT ALL FACADES	50 %	50 %	YES
LENGTH OF CANOPY AT ALL FACADES	25 %	49 %	YES

SIGNAGE
WILL BE PERMITTED SEPARATELY

WINDOW AND CANOPY / AWNINGS CALCULATIONS

FACADE NAME	FACADE LENGTH	WINDOW LENGTH	PERCENTAGE	CANOPY LENGTH	PERCENTAGE
WEST (FRONT)	85'-4"	43'-2"	45%	45'-0"	53%
SOUTH	61'-4"	25'-4"	41%	25'-4"	41%
EAST (REAR)	62'-4"	23'-4"	37%	23'-4"	37%
NORTH	61'-4"	33'-4"	54%	25'-0"	41%
TOTAL	250'-4"	128'-2"	50	122'-4"	49



2 SOUTH ELEVATION

SCALE: 1/4" = 1'-0"

MATERIAL CALCULATIONS

MATERIAL	AREA	PERCENTAGE
STONE ST-1: CORDOVA CREAM, CHOPPED FACE, RUNNING BOND	469 S.F.	38
STONE ST-2: LEUDERS WALNUT LIMESTONE, ROUGH FACE, RANDOM ASHLAR	540 S.F.	43
STONE ST-3: CAST STONE, BUFF COLOR	79 S.F.	6
P-2: (3) PROCESS STUCCO, PAINTED	88 S.F.	7
H-1 TO H-4: CEMENTITIOUS FIBERBOARD (HARDIE PLANK) PAINTED	56 S.F.	5
TOTAL MASONRY	1,232 S.F.	99
A-1: PREFINISHED COMPOSITE ALUMINUM PANELS, CLEAR ANODIZED	10 S.F.	1
MA-1: ROOF NOT INCLUDED IN CALCULATIONS		
METAL LOUVERS, PAINTED TO MATCH H-1	0 S.F.	0
TOTAL ACCENT MATERIALS	10 S.F.	1
		% OF TOTAL
TOTAL GLAZING	189 S.F.	13

TOTAL SURFACE AREA OF FACADE 1,431 S.F.
TOTAL SURFACE AREA OF FACADE LESS OPENINGS 1,242 S.F.

SIGNAGE
WILL BE PERMITTED SEPARATELY

MATERIAL LEGEND

- ST-1: CORDOVA CREAM, CHOPPED FACE AND SIDES, RUNNING BOND, 4" THICK
- ST-2: LEUDERS WALNUT LIMESTONE, ROUGH FACE, RANDOM ASHLAR, 4" THICK
- ST-3: CAST STONE, COLOR TO BE "BUFF"
- H-1: PAINTED CEMENTITIOUS FIBERBOARD (HARDIE PLANK)
COLOR: BENJAMIN MOORE HO-80 BLEEDER BEIGE
- H-2: PAINTED CEMENTITIOUS FIBERBOARD (HARDIE PLANK)
COLOR TO BE IC1 A188 MEADOWLARK
- H-3: PAINTED CEMENTITIOUS FIBERBOARD (HARDIE PLANK)
COLOR TO BE IC1 S15 AMERICAN EAGLE
- H-4: PAINTED CEMENTITIOUS FIBERBOARD (HARDIE PLANK)
COLOR TO BE IC1 S24 PALM SPRINGS TAN
- P-2: PAINTED STUCCO
COLOR TO BE IC1 A188 MEADOWLARK
- A-1: AT CANOPIES - PREFINISHED COMPOSITE ALUMINUM PANELS, CLEAR ANODIZED
- MA-1: AT ROOF AND AT AWNINGS - STANDING SEAM METAL ROOF,
BERTRIDGE MANUFACTURING CO., LEAKSCOTE,
(20 YEAR FINISH WARRANTY)
- GL-1: SOLARBAN 70XL ON SOLEXIA GLASS
CLEAR ANODIZED FRAMES
- GL-2: CLEAR TEMPERED GLASS
CLEAR ANODIZED FRAMES

EXTERIOR ELEVATIONS

©2024 Chesney Morales Partners, Inc.
All rights reserved. No part of this document may be reproduced or utilized in any form without prior written authorization of Chesney Morales Partners, Inc.

THIS DOCUMENT IS
INCOMPLETE AND IS
NOT TO BE USED FOR
REGULATORY,
APPROVAL, PERMIT,
OR CONSTRUCTION
CHESNEY MORALES
PARTNERS, INC.
FREDERICK P. LEDTKA
TEXAS REG. 14737

NO.	DATE	DESCRIPTION

A NEW BRANCH OFFICE for
RANDOLPH BROOKS
Federal Credit Union
President George Bush Highway
Grand Prairie, Texas



JOB NO:	2412
DATE:	04/05/24
DRAWN BY:	PAS
CHECKED BY:	FFL
SHEET	

A3.2

[illegible]

JOB NO:	2412
DATE:	04/05/24
DRAWN BY:	PAS
CHECKED BY:	FFJ

A3.3



ST-1	CORDOVA CREAM, CHOPPED FACE AND SIDES, RUNNING BOND, 4" THICK
ST-2	LEUDERS WALNUT LIMESTONE, ROCK FACE, RANDOM ASHLAR, 4" THICK
ST-3	CAST STONE, COLOR TO BE "BUFF"
H-1	PAINTED CEMENTITIOUS FIBERBOARD (HARDIE PLANK) COLOR: BENJAMIN MOORE HC-85 BLUE/BEIGE RIDGE
H-2	PAINTED CEMENTITIOUS FIBERBOARD (HARDIE PLANK) COLOR TO BE IC141838 MOUNTAIN LARK
H-3	PAINTED CEMENTITIOUS FIBERBOARD (HARDIE PLANK) COLOR TO BE IC1515 AMERICAN EAGLE
H-4	PAINTED CEMENTITIOUS FIBERBOARD (HARDIE PLANK) COLOR TO BE IC1402 PALM SPRINGS TAN
H-5	PAINTED STUCCO COLOR TO BE IC141838 MEADOWLARK
A-1	<u>AT CANOES</u> , PREFINISHED COMPOSITE ALUMINUM PANELS, CLEAR ANODIZED
MA-1	<u>AT STAIRS</u> AND <u>AT ENDINGS</u> , STANDING SEEN METAL ROOF, TIGER LUX MANUFACTURING, INC., LEADCOLE, (20 YEAR FINISH WARRANTY)
GL-1	SOLARBAN 70XL ON SOLEXA GLASS CLEAR ANODIZED FRAMES
GL-2	GLASS TEMPERED GLASS CLAR ANODIZED FRAMES

MATERIAL	AREA	PERCENTAGE
STONE ST-1: CORDOVA CREAM, CHOPPED FACE, RUNNING BOND	253 SF.	19
STONE ST-2: LEUDERS BUFF/LI Limestone, ROUGH FACE, RANDOM ASHLAR	824 SF.	62
P-2: CAST STONE, WALF COLOR	66 SF.	5
P-2 (3) PROCESS STUCCO, PAINTED	0 SF.	0
H-1 TO H-4 CEMENTITIOUS FIBERBOARD (HARDIE PLANK) PAINTED	80 SF.	6
TOTAL MASONRY	1,223 SF.	92
M-1: ROOF NOT INCLUDED IN CALCULATIONS		
A-1: PREFINISHED COMPOSITE ALUMINUM PANELS, CLEAR ANODIZED	11 SF.	1
METAL LUMBERS, PAINTED TO MATCH H-4	97 SF.	7
TOTAL ACCENT MATERIALS	108 SF.	8
		% OF TOTAL
TOTAL GLAZING	171 SF.	11

TOTAL SURFACE AREA OF FACADE	1,502 S.F.
TOTAL SURFACE AREA OF FACADE LESS OPENINGS	1,331 S.F.

SIGNAGE
WILL BE PERMITTED SEPARATELY

© 2024 Chesney Morales Partners, Inc.
All rights reserved. No part of this
document may be reproduced or utilized
in any form without prior written authorization
of Chesney Morales Partners, Inc.

THIS DOCUMENT IS
INCOMPLETE AND IS
NOT TO BE USED FOR
REGULATORY,
APPROVAL, PERMIT,
OR CONSTRUCTION
CHESNEY MORALES
PARTNERS, INC.
FREDERICK P. LEDTKA
TEXAS REG. 14737

NO.	DATE	DESCRIPTION

A NEW BRANCH OFFICE for
RANDOLPH BROOKS
Federal Credit Union
President George Bush Highway
Grand Prairie, Texas

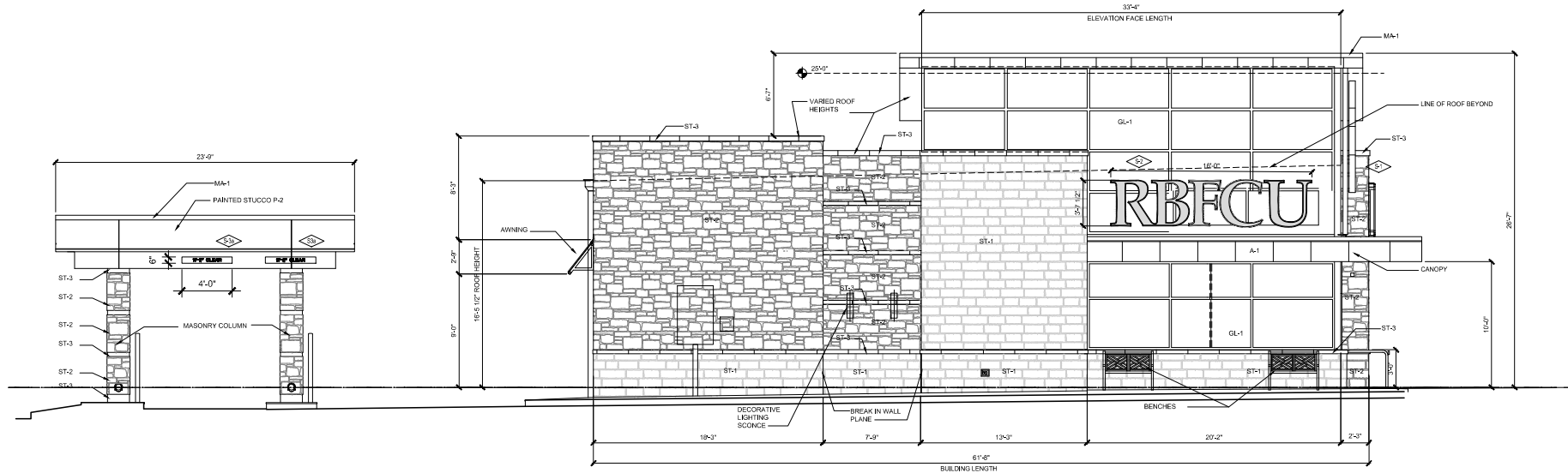


cmp chesneymoralespartners, inc.
architecture | interior design
4001 Broadway, Suite 250 | San Antonio, Texas 78209
210.628.9481 | TBAE Firm BR1010

JOB NO: 2412
DATE: 04/05/24
DRAWN BY: PAS
CHECKED BY: FFL

SHEET

A3.4



1 NORTH ELEVATION

SCALE: 1/4" = 1'-0"

MATERIAL CALCULATIONS

MATERIAL	AREA	PERCENTAGE
STONE ST-1: CORDOVA CREAM, CHOPPED FACE, RUNNING BOND	398 S.F.	36
STONE ST-2: LEUDERS WALNUT LIMESTONE, ROUGH FACE, RANDOM ASHLAR	483 S.F.	46
STONE ST-3: CAST STONE, BUFF COLOR	51 S.F.	5
P-2: (3) PROCESS STUCCO, PAINTED	88 S.F.	8
H-1 TO H-4: CEMENTITIOUS FIBERBOARD (HARDIE PLANK), PAINTED	0 S.F.	0
TOTAL MASONRY	1,008 S.F.	95
MA-1: ROOF NOT INCLUDED IN CALCULATIONS		
A-1: PREFINISHED COMPOSITE ALUMINUM PANELS, CLEAR ANODIZED	53 S.F.	5
METAL LOUVERS, PAINTED TO MATCH H-1	0 S.F.	0
TOTAL ACCENT MATERIALS	53 S.F.	5
		% OF TOTAL
TOTAL GLAZING	498 S.F.	32

TOTAL SURFACE AREA OF FACADE 1,557 S.F.
TOTAL SURFACE AREA OF FACADE LESS OPENINGS 1,061 S.F.

SIGNAGE
WILL BE PERMITTED SEPARATELY

MATERIAL LEGEND

- ST-1: CORDOVA CREAM, CHOPPED FACE AND SIDES, RUNNING BOND, 4" THICK
- ST-2: LEUDERS WALNUT LIMESTONE, ROCK FACE, RANDOM ASHLAR, 4" THICK
- ST-3: CAST STONE, COLOR TO BE "BUFF"
- H-1: PAINTED CEMENTITIOUS FIBERBOARD (HARDIE PLANK)
COLOR: BENJAMIN MOORE H-90 BLEEKER BEIGE
- H-2: PAINTED CEMENTITIOUS FIBERBOARD (HARDIE PLANK)
COLOR TO BE IC1 A1838 MEADOWLARK
- H-3: PAINTED CEMENTITIOUS FIBERBOARD (HARDIE PLANK)
COLOR TO BE IC1 S15 AMERICAN EAGLE
- H-4: PAINTED CEMENTITIOUS FIBERBOARD (HARDIE PLANK)
COLOR TO BE IC1 S24 PALM SPRINGS TAN
- P-2: PAINTED STUCCO
COLOR TO BE IC1 A1838 MEADOWLARK
- A-1: AT CANOPIES - PREFINISHED COMPOSITE ALUMINUM PANELS, CLEAR ANODIZED
- MA-1: AT ROOF AND AT AWNINGS - STANDING SEAM METAL ROOF,
BERTRIDGE MANUFACTURING CO., LEADSCOTE,
(20 YEAR FINISH WARRANTY)
- GL-1: SOLARBAN 70XL ON SOLEXIA GLASS
CLEAR ANODIZED FRAMES
- GL-2: CLEAR TEMPERED GLASS
CLEAR ANODIZED FRAMES

EXTERIOR ELEVATIONS

©2024 Chesney Morales Partners, Inc.
All rights reserved. No part of this
document may be reproduced or utilized
in any form without prior written authorization
of Chesney Morales Partners, Inc.