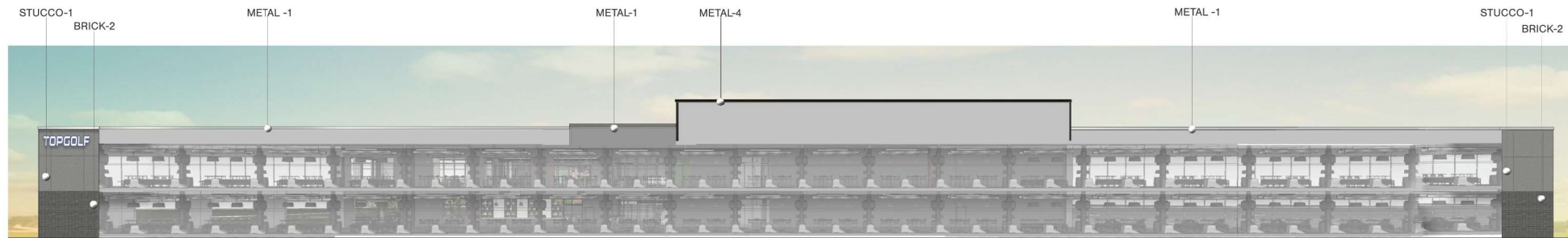


# Exhibit D - Building Elevations

## Page 1 of 3



Front Elevation (North)



Rear Elevation (South) \*Excludes Facade Material Calculations since this is facing interior of driving range

Front North Building Facade Area: 14,610 SF

Stucco 1: 2,798 SF (19%)

Stucco 2: 1,458 SF (10%)

Metal Louvers: 1,408 SF (10%)

Brick: 3,908 SF (27%)

Glazing: 3,999 SF (27%)

Misc (Metal Canopy, Coping, Hollow Metal Doors, etc.): 1,039 SF (7%)

Percentage of Covered Walkways in Linear Feet

Building Facade in Linear Feet= 701'-2"

Covered Walkways in Linear Feet= 169'-2"

Percent of Covered Walkways= 24.1%

Percentage of Building Glazing in Linear Feet

Building Facade in Linear Feet= 701'-2"

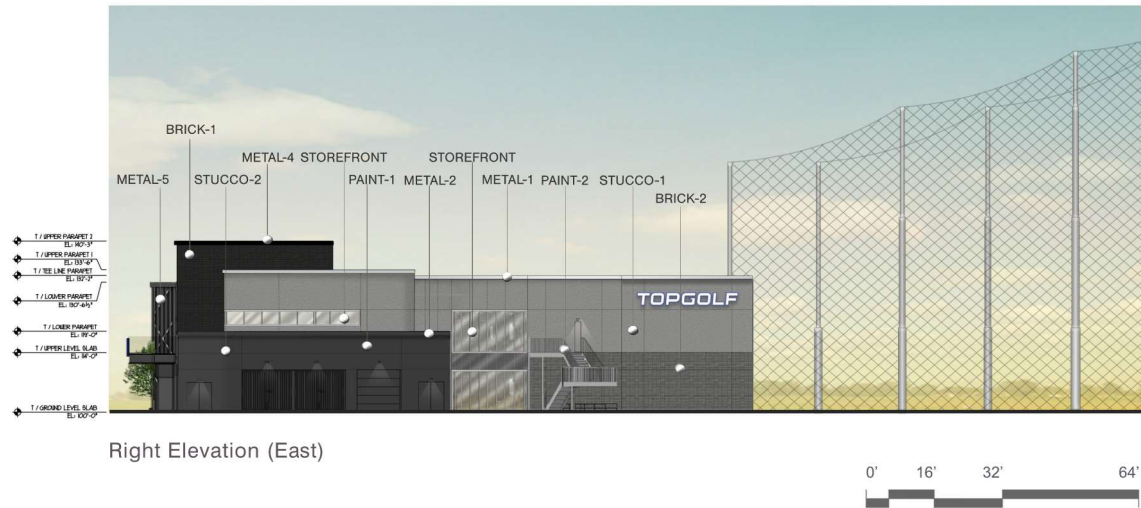
Total Glazing in Linear Feet= 331'-3"

Percent of Glazing= 47.2%



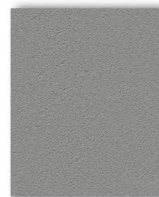
### Exterior Elevations

# Exhibit D - Building Elevations Page 2 of 3

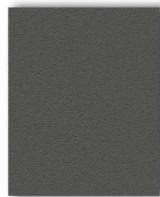


Right Elevation (East)

Right East Building Facade Area: 4,755 SF  
 Stucco 1: 1,470 SF (31%)  
 Stucco 2: 714 SF (15%)  
 Metal Louvers: 91 SF (2%)  
 Brick: 1,201 SF (25%)  
 Glazing: 570 SF (12%)  
 Misc (Metal Canopy, Coping, Hollow Metal Doors, etc.): 709 SF (15%)



**STUCCO - 1**  
 STO CORP  
 POWERWALL STUCCO  
 FINE SAND FINISH  
 COLOR: V7232129



**STUCCO - 2**  
 STO CORP  
 POWERWALL STUCCO  
 FINE SAND FINISH  
 COLOR: NA17-0049



**BRICK - 1**  
 ENDICOTT  
 MODULAR THIN BRICK  
 COLOR: SN8



**BRICK - 2**  
 ENDICOTT  
 MODULAR THIN BRICK  
 COLOR: SN3



**METAL - 1**  
 PAC CLAD  
 ALUMINUM COPING  
 COLOR: SILVER



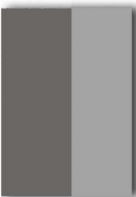
**METAL - 2**  
 PAC CLAD  
 ALUMINUM COPING  
 COLOR: GRAPHITE



**METAL - 4**  
 PAC CLAD  
 ALUMINUM COPING  
 COLOR: BLACK ALUMINUM



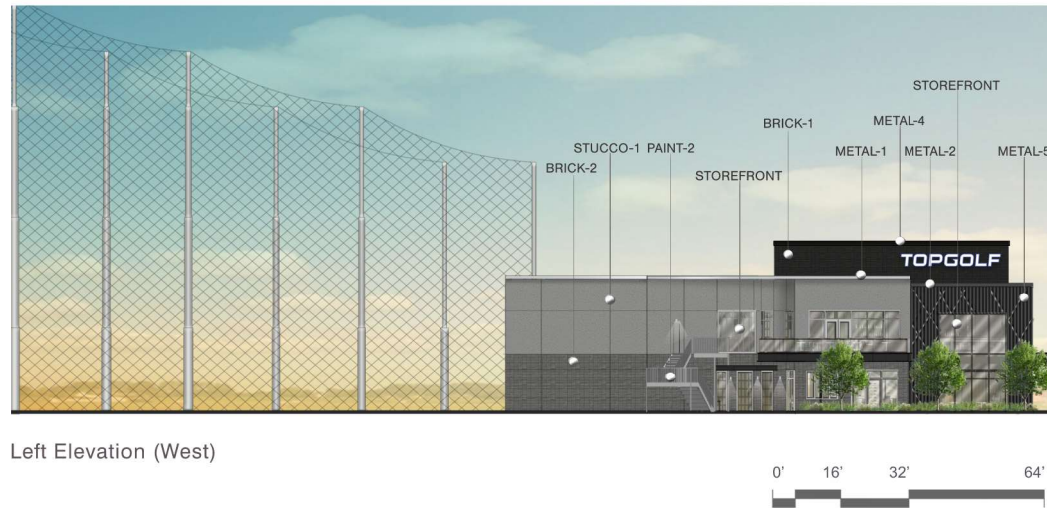
**METAL - 5**  
 METAL DESIGN SYSTEM  
 METAL LOUVER SYSTEM  
 COLOR: (VERTICAL) PAC CLAD  
 MUSKET GRAY; (DIAGONAL)  
 LINETEC LT122667



**PAINT - 1 & 2**  
 SHERWIN WILLIAMS  
 COLOR: SW7674 PEPPERCORN  
 COLOR: SW9162 AFRICAN GREY

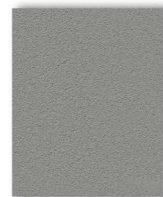
## Exterior Elevations

# Exhibit D - Building Elevations Page 3 of 3

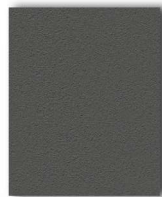


Left Elevation (West)

Left West Building Facade Area: 4,416 SF  
 Stucco 1: 1,305 SF (30%)  
 Stucco 2: 0 SF (0%)  
 Metal Louvers: 443 SF (10%)  
 Brick: 1,392 SF (32%)  
 Glazing: 999 SF (23%)  
 Misc (Metal Canopy, Coping, Hollow Metal Doors, etc.): 277 SF (6%)



**STUCCO - 1**  
 STO CORP  
 POWERWALL STUCCO  
 FINE SAND FINISH  
 COLOR: V7232129



**STUCCO - 2**  
 STO CORP  
 POWERWALL STUCCO  
 FINE SAND FINISH  
 COLOR: NA17-0049



**BRICK - 1**  
 ENDICOTT  
 MODULAR THIN BRICK  
 COLOR: SN8



**BRICK - 2**  
 ENDICOTT  
 MODULAR THIN BRICK  
 COLOR: SN3



**METAL - 1**  
 PAC CLAD  
 ALUMINUM COPING  
 COLOR: SILVER



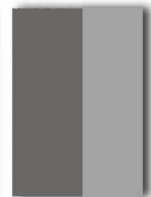
**METAL - 2**  
 PAC CLAD  
 ALUMINUM COPING  
 COLOR: GRAPHITE



**METAL - 4**  
 PAC CLAD  
 ALUMINUM COPING  
 COLOR: BLACK ALUMINUM



**METAL - 5**  
 METAL LOUVER DESIGN SYSTEM  
 COLOR: (VERTICAL) PAC CLAD  
 MUSKET GRAY, (DIAGONAL)  
 LINETEC LT122667



**PAINT - 1 & 2**  
 SHERWIN WILLIAMS  
 COLOR: SW7674 PEPPERCORN,  
 SW9162 AFRICAN GREY

## Exterior Elevations