

Public Works Director Report

June 2024

Demand- average daily demand was 444,000 Gallons per Day (G.P.D.)

Total Monthly Production – 13,348,000 gallons

- **Glen Rose Condominiums (behind Baymont Inn & Suites)**

A developer is planning to develop this unique property. An extensive drainage study has already been provided by Barron-Stark Engineering, and reviewed by Chris Hay. The study proved that development of the property will not negatively impact any properties downstream. There is an existing sewer main running through the property that is currently scheduled for an upgrade in size from 10" to 15". This work will need to be completed before the development. City staff, Chris Hay, and the development team have been discussing the best possible scenario to upgrade the utilities without holding up the development of the property. We have discussed the possibilities of a development agreement allowing the developer to incur the initial costs for construction and then be reimbursed by the city once the project has been completed. The civil plans for the development have been issued to the city for review and comments. Chris Hay has completed the civil plan review and provided comments for the developers engineer. Once the comments have been addressed a pre-construction meeting will be scheduled. **A pre-construction meeting has not been scheduled yet.**

- **Well No.3 - Well No.5 Ground Storage Tank Replacement Project**

City staff met with Chris Hay to review a *DRAFT* set of construction drawings for the 250K gallon ground water storage tank replacement at Well Site No.3 near the intersection of Hereford St. (Hwy 56N) and Tom Rumph Road. By rule, the construction plans must be submitted to the Texas Commission on Environmental Quality for review and approval before construction begins. Amendment No.1 to eHT Work Order No.40 was approved by City Council in November. Chris Hay is currently waiting on the electrical engineer on a couple of items before completing the plan sets. Chris Hay and I met on the 21st of February to review the *DRAFT* plan sets for both storage tank replacements. The plans were submitted to the TCEQ for design review on March 14th. **The TCEQ provided written approval for construction of the two ground storage tanks on May 13, 2024. The project is currently being advertised for competitive bids. Bids will be accepted at City Hall until 2:30pm on July, 11, 2024 and then opened publicly. The bid is tentatively scheduled for award at the July 23rd City Council Meeting.**

- **TxDOT- Safe Routes to School/Transportation Alternatives Project 2023**

A detailed application for TxDOT's 2023 Transportation Alternatives Call for Projects was completed and submitted to TxDOT on June 5, 2023. I received an email from Noah Heath (TxDOT Transportation Alternatives Program Manager) on July 21, 2023 notifying us that the Texas Transportation Commission approved additional federal funding for our sidewalk project at their July 11th meeting. The additional funding amount is \$710,765. The project description is scoped to construct 1.76 miles of accessible sidewalks along Mary Lynn Drive, Stadium Drive, Walker Street, Holden Street, Shepard Street, US67, and FM56. Sidewalks will be 5' wide and 4" thick. The design work is being handled by a TxDOT consultant. Currently, the project is divided into two separate scopes. The first will be a new highway crossing at the intersection of Hereford and Big Bend Trail. The plans are 100% complete for that scope, with the let date scheduled for April 2024. The Safe Routes to School (SRTS) scope of work plan set is currently 95% complete, and is scheduled for 100% completion on April 1, 2024, with a let date of August 2024. The proposed Easement Agreements have been submitted to the GRISD, and Interbank for review, and possible approval. The oversized utility pole that was recently erected in the dead center of the existing sidewalk at the intersection of S.W. Barnard/Hereford St., will not be relocated. This is the exact location where the upcoming sidewalk project terminated. There was an ADA ramp scheduled to be in that location. The engineer will be re-designing the ramp to accommodate the TNMP utility pole. The final design will have to meet the approval of the TxDOT Area Engineer for compliance. All of the sidewalk easements have been secured and filed with Somervell County. The required documentation has been provided to TxDOT so that the grant funds are not jeopardized. This project is scheduled, by TxDOT, to be advertised for acceptance of competitive bids in August 2024. **TxDOT has started construction of sidewalks, and upgraded crosswalks at the Hwy 67/Hereford St. intersection on the north side of Hwy 67. This construction is not part of our SRTS project. This is a separate project completely funded by TxDOT.**

- **Annual Consumer Confidence Report**

The TCEQ requires public water systems to provide a Consumer Confidence Report (water quality report) to customers no later than July 1st annually. This report is generated using the data collected by an independent lab and then reported to the TCEQ throughout the year. The TCEQ allows us to post the report on the city website, and in public places for those that may not have access to the website. The link was printed on the June water bill to notify customers.

- Groundwater Study (Start Jan.19, 2024 Expected Completion Sept.19, 2024)**
 Enprotec/Hibbs and Todd will be sub-consulting with RW Harden & Associates. The desktop analysis has begun, but the field work will not take place until sometime this summer. The final report is expected to be completed by mid-September.
- Texas Community Development Block Grant (TxCDBG) Project**
 This grant was applied for back in January of 2023 through Public Management, Inc. (Jake McAdams). The CDBG is administered by the Texas Department of Agriculture. The city was awarded \$500,000 to be utilized on drainage, and street improvements, specifically on the south side of the Paluxy River. The CDBG requires a \$25,000 match from local funds. The project scope will include re-construction of a portion of Clay Street, Webster Street, and Third Street, complete with new curb and gutter. The construction plans and specifications have been completed. Atmos Energy has been given an opportunity to review the plans before the street improvements begin. This will allow any old gas lines to be replaced, and any conflicts to be resolved before the street re-construction project begins. **I received an update from Kristen Boswell (Public Management) on May 24th. The environmental review has been completed and the TDA grant funds should be released for use in the coming weeks. The engineer is preparing the bid documents and we should be able to bid the project out as soon as we get the final clearance from TDA.**
- Well Site No.2 Pump Station Improvements**
 Enprotec/Hibbs & Todd have begun the design work for the pump station improvements at Well Site No.2. The improvements will allow continuous use of the groundwater well enabling the system to be much more reliable. Also, upon project completion, this project will allow operators to fill the standpipe at Well Site No.4 (Bryan Street) from two different groundwater sources, in the event of a well failure, or if a ground storage tank is taken out of service.
- N.E. Barnard Street Sidewalk Project**
 P.E. Carlos Aguilar from Freeman-Millican, Inc. provided a contract for engineering services for the N.E. Barnard Street sidewalk project (Grace St. to Big Rocks Park). The contract has since been executed, and the project area has been surveyed by Freeman-Millican, Inc. on May 7th-8th. **The *draft* sidewalk design has been completed for staff to review sometime this week. There are two different variations to consider. We will be meeting with Carlos to decide which path makes more sense.**

- **Capital Improvement Plan Update/Impact Fee Study**

The Capital Improvements Plan update is nearing completion. Once the draft plan has been completed, Chris Hay will present the draft plan to city staff for review. City Council will then need to review and possibly approve the plan. The updated plan will be used in the development of impact fees.

FYI...

- 3 street lights were reported to TNMP Company this month for repairs.
- I have hired a new employee for the Public Works crew. Joshua Dodd began work on 6-17-2024 after being employed by Aqua Texas. He brings several years of experience in the water industry to Glen Rose.
- In June of 2022, the city pumped 17,334,000 gallons of well water, compared to 14,343,000 in June of 2023, and 13,100,000 in June of 2024. There are currently 1405 active water connections in the distribution system whereas there were 1307 in June of 2022.

MONTHLY OPERATING REPORT

FOR PUBLIC WATER SYSTEMS THAT ARE USING GROUNDWATER SOURCES
OR ARE PURCHASING TREATED WATER FROM ANOTHER PUBLIC WATER SYSTEM

PUBLIC WATER SYSTEM NAME: City of Glen Rose

PWS ID No.: 2130001

Report for the Month of: June 2024

Number of Active Service Connections this Month: 1403

WATER PRODUCTION						
Pumpage to storage and distribution X 1000 Gals						
Date	From Wells Directly to Distr.	From Wells to Storage Tanks	Purchased Water Directly to Distr.	Purchased Water into Storage	From SWTP or GWUDI Plant	Total Daily Production
1		333		0		333
2		405		0		405
3		351		1		352
4		355		0		355
5		360		1		361
6		539		0		539
7		354		0		354
8		519		0		519
9		420		0		420
10		481		0		481
11		331		0		331
12		340		0		340
13		356		0		356
14		467		0		467
15		370		0		370
16		436		0		436
17		556		0		556
18		580		0		580
19		540		0		540
20		399		0		399
21		427		0		427
22		463		0		463
23		466		0		466
24		451		0		451
25		483		0		483
26		458		0		458
27		544		0		544
28		482		0		482
29		531		0		531
30		564		0		564
31						
Total		13346		2		13348
Avg		444		0.06		444
Max		564				564
Min		333				331

Any additional information you wish to provide: _____

I certify that I am familiar with the information contained in this report and that, to the best of my knowledge, the information is true, complete and accurate.

Operator's Signature: [Signature] Date: 7-1-24

Certificate No. and Class: WG0012979

WASTEWATER TREATMENT PLANT LOG

EPA I.D # TX0033316
 PERMIT # WQ0010177001

WWTP Name:

City of Glen Rose

Month/year:

June-24

Chief Operator : Lance Powell

Day	Time	Final Effluent Flowmeter (X100)	Final Effluent (MGD)	Golf Course Flowmeter (X100)	Golf Course Effluent (MGD)	Total Effluent (MGD)	Inst. (GPM)	Staff Gauge (Inches)	PH	Time Cl2 Sample Collected	Time Cl2 Sample Analyzed	Chlorine Res. Before Correc.	Mn Correc.	Chlorine Res. After Correc.	Chlorine Free (min. 0.5)	Chlorine Feed Rate (lbs / Day)	Chlorine Available (lbs)	Chlorine Used (lbs)	Blower Filter Check (wkly)	Temp. °F	Weather Condition	Rain In.	Oper Init.
	EOM #	264046		112386																			
1		269347	0.530	112386	0.000	0.530																	
2		273357	0.401	112386	0.000	0.401																	
3		277359	0.400	112386	0.000	0.400																	
4		280841	0.348	112386	0.000	0.348																	
5		284355	0.351	112386	0.000	0.351																	
6		287464	0.311	112386	0.000	0.311																	
7		291391	0.393	112386	0.000	0.393																	
8		294886	0.350	112386	0.000	0.350																	
9		298211	0.333	112386	0.000	0.333																	
10		301249	0.304	112386	0.000	0.304																	
11		304254	0.301	112386	0.000	0.301																	
12		308939	0.469	112390	0.000	0.469																	
13		314651	0.571	112390	0.000	0.571																	
14		317978	0.333	112390	0.000	0.333																	
15		321398	0.342	112390	0.000	0.342																	
16		324709	0.331	112390	0.000	0.331																	
17		326789	0.208	112390	0.000	0.208																	
18		329871	0.308	112390	0.000	0.308																	
19		332765	0.289	112390	0.000	0.289																	
20		335959	0.319	112390	0.000	0.319																	
21		339189	0.323	112390	0.000	0.323																	
22		342172	0.298	112390	0.000	0.298																	
23		345109	0.294	112390	0.000	0.294																	
24		348041	0.293	112390	0.000	0.293																	
25		351117	0.308	112390	0.000	0.308																	
26		353758	0.264	112390	0.000	0.264																	
27		356622	0.286	112390	0.000	0.286																	
28		359218	0.260	112390	0.000	0.260																	
29		362173	0.296	112390	0.000	0.296																	
30		364981	0.281	112390	0.000	0.281																	
31			-36.498		-11.239	-47.737																	

Total Flow:
Average Flow:

-37,643,200
-1,214,297
Golf Course Min
Golf Course Max
Creek Min
Creek Max

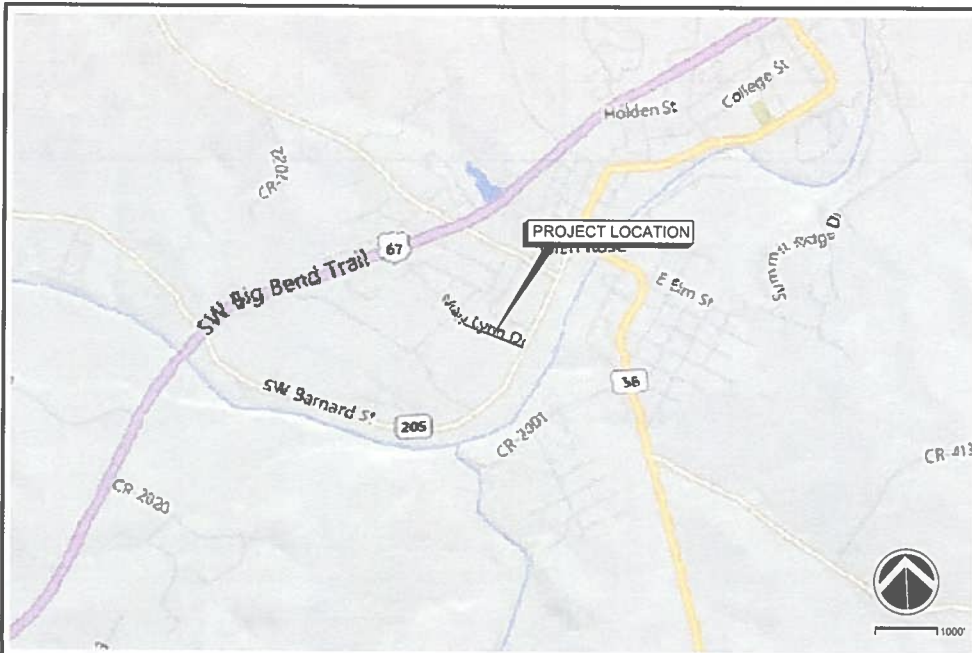
-11.239
0.000
-36.498
0.571

CL2 Min: 0.00
CL2 Max: 0.00

Write Comments on Back

Operator:

TOTAL GALLONS TO GOLF COURSE
 - 000 GALLONS -



LOCATION MAP
1"=1000'

Sheet List Table	
Sheet Number	Sheet Title
G-101	COVER SHEET
G-102	GENERAL NOTES
C-101	SIDEWALK PLAN OPTION 1 - STA 0+00 TO STA 6+00
C-102	SIDEWALK PLAN OPTION 1 - STA 6+00 TO STA 12+00
C-103	SIDEWALK PLAN OPTION 1 - STA 12+00 TO END
C-104	SIDEWALK PLAN OPTION 2 - STA 10+00 TO END

CITY OF GLEN ROSE GLEN ROSE NE BERNARD SIDEWALK IMPROVEMENTS PRELIMINARY



MAYOR
JOE BOLES

MAYOR PRO-TEM
GEORGE FREAS

COUNCIL MEMBERS
CANDACE SCHOLZ
RICHARD BRUNING
DEMETRA CONRAD
TJ WALKER

THIS PLAN SHEET IS
ISSUED FOR INTERIM
REVIEW ONLY AND IS
NOT FOR BIDDING,
CONSTRUCTION OR
PERMIT PURPOSES.

PREPARED BY:
VICTOR ACUÑA, P.E.
No. 114152 GH
05.17.24

FREEMAN-MILLICAN, INC.
ENGINEERS - ARCHITECTS - PLANNERS
6330 LYNDON B. JOHNSON FREEWAY, SUITE 1275 DALLAS, TEXAS 75243 PH 214.503.0555

FMI PROJECT No. 24018
June 2024

GENERAL NOTES:

- CONTRACTOR TO VERIFY LOCATION AND ELEVATION OF EXISTING FACILITIES PRIOR TO CONSTRUCTION OF PROPOSED FACILITIES. ANY DAMAGE TO EXISTING FACILITIES OR PROPERTY INCURRED AS A RESULT OF CONSTRUCTION OPERATIONS WILL BE REPAIRED BY THE CONTRACTOR AT HIS OWN EXPENSE.
- DISPOSE OF SURPLUS SPOIL MATERIAL OFFSITE OR AT A LOCATION AS DIRECTED BY OWNER.
- CONTRACTOR IS RESPONSIBLE FOR MAINTAINING SURFACE DRAINAGE ON SITE DURING CONSTRUCTION.
- GUIDELINES SET FORTH IN THE TEXAS MANUAL ON UNIFORM TRAFFIC CONTROL DEVICES SHALL BE OBSERVED.
- THESE PLANS, PREPARED BY FREEMAN-MILLICAN, INC., DO NOT EXTEND TO OR INCLUDE DESIGNS OR SYSTEMS PERTAINING TO THE SAFETY OF THE CONSTRUCTION CONTRACTOR OR ITS EMPLOYEES, AGENTS OR REPRESENTATIVES IN THE PERFORMANCE OF THE WORK. THE SEAL OF FREEMAN-MILLICAN, INC., REGISTERED PROFESSIONAL ENGINEER(S) HEREOF DOES NOT EXTEND TO ANY SUCH SAFETY SYSTEMS THAT MAY NOW OR HEREAFTER BE INCORPORATED IN THESE PLANS. THE CONSTRUCTION CONTRACTOR SHALL PREPARE OR OBTAIN THE APPROPRIATE SAFETY SYSTEMS, INCLUDING THE PLANS AND SPECIFICATIONS REQUIRED BY THE HOUSE BILLS 862 AND 865 ENACTED BY THE TEXAS LEGISLATURE IN THE 70th LEGISLATURE - REGULAR SESSION.
- ALL CONSTRUCTION SHALL BE IN ACCORDANCE WITH THE NORTH CENTRAL TEXAS COUNCIL OF GOVERNMENTS (NCTCOG) "STANDARD SPECIFICATIONS FOR PUBLIC WORKS CONSTRUCTION" - LATEST EDITION.
- BEFORE BEGINNING CONSTRUCTION THE CONTRACTOR SHALL PREPARE A CONSTRUCTION SEQUENCE SCHEDULE. THE CONSTRUCTION SCHEDULE SHALL BE SUCH THAT THERE IS THE MINIMUM INTERFERENCE WITH TRAFFIC ALONG OR ADJACENT TO THE PROJECT.
- UTILITIES SHOWN ON THE PLANS WERE TAKEN FROM FIELD SURVEYS AND INFORMATION PROVIDED BY THE UTILITY COMPANIES. THE COMPLETENESS AND ACCURACY OF THIS DATA ARE NOT GUARANTEED.
- MATERIAL TESTING SHALL BE PERFORMED BY AN INDEPENDENT TESTING LABORATORY AND PAID FOR BY THE CONTRACTOR. TESTS AND FREQUENCY TO BE PER THE NCTCOG DOCUMENTS.
- TEMPORARY EROSION CONTROL SHALL BE USED TO MINIMIZE THE SPREAD OF SILT AND MUD FROM THE PROJECT ON TO EXISTING STREETS, ALLEYS, DRAINAGEWAYS AND PUBLIC AND PRIVATE PROPERTY. TEMPORARY EROSION CONTROL MAY INCLUDE INLET PROTECTION, STRAW BALES, BERMS, DIKES, SWALES, STRIPS OF UNDISTURBED VEGETATION, CHICK DAMS AND OTHER METHODS AS INCLUDED IN THE PROJECT SPECIFICATIONS.
- THE CONTRACTOR SHALL MAINTAIN TWO-WAY TRAFFIC AND DRIVEWAY ACCESS AT ALL TIMES ALONG THE PROJECT EXCEPT WHERE CLOSING THE STREET IS SPECIFICALLY ALLOWED BY THE CITY. THE CONTRACTOR SHALL PROVIDE A TRAFFIC CONTROL PLAN FOR REVIEW AND APPROVAL BY THE CITY PRIOR TO BEGINNING CONSTRUCTION.

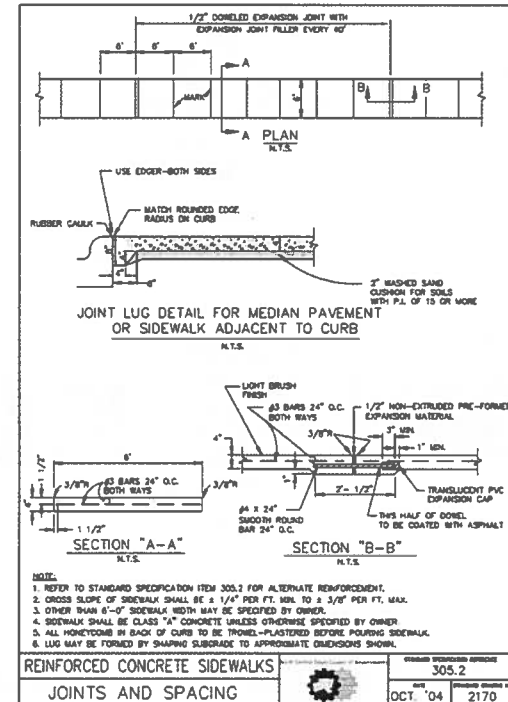
STORMWATER POLLUTION PREVENTION NOTES:

- PRIOR TO START OF CONSTRUCTION OR AS SOON AS PRACTICAL, CONTRACTOR SHALL INSTALL POLLUTION PREVENTION SYSTEMS AT LOCATIONS SHOWN ON PLANS.
- CONTRACTOR SHALL INSPECT ALL POLLUTION PREVENTION SYSTEMS SPECIFIED HEREIN, AT INTERVALS SPECIFIED IN TCEQ RULES AND REGULATIONS.
- CONTRACTOR SHALL MAINTAIN, REPAIR AND/OR REPLACE DAMAGED EROSION AND SEDIMENTATION CONTROL SYSTEMS THROUGHOUT THE DURATION OF THE CONTRACT. INSPECTION REPORTS WILL BE SUBMITTED MONTHLY WITH PROGRESS PAYMENT REQUEST.
- CONTRACTOR SHALL PROVIDE PROTECTED STORAGE AREAS FOR CHEMICALS, PAINTS, SOLVENTS, FERTILIZERS, AND OTHER POTENTIALLY TOXIC MATERIALS IN A METHOD WHICH MEETS ALL LOCAL, STATE, AND FEDERAL LAWS, (AND SEPARATE PAY).
- CONTRACTOR SHALL LOCATE FUEL/MATERIAL STORAGE AREAS AWAY FROM STORM WATER CONVEYANCE SYSTEMS. CONTRACTOR SHALL USE A LINER UNDER, OR AN EARTHEN BERM AROUND, ABOVE-GROUND STORAGE TANKS. CONTRACTOR SHALL USE FILTER FABRIC FENCING OR BERMS AROUND FUEL STORAGE AREAS.
- CONTRACTOR SHALL ADVISE OWNER IMMEDIATELY, VERBALLY, AND IN WRITINGS, OF ANY FUEL OR TOXIC MATERIALS SPILLS ONTO THE PROJECT CONSTRUCTION AREA AND THE ACTIONS TAKEN TO REMEDY THE PROBLEM.
- CONTRACTOR IS RESPONSIBLE FOR DISPOSING OF HIS FUELS, MATERIALS AND CONTAMINATED EXCAVATIONS IN A LEGALLY APPROVED MANNER.
- CONTRACTOR IS RESPONSIBLE FOR COMPLYING WITH ALL APPLICABLE ENVIRONMENTAL LAWS.
- CONTRACTOR IS RESPONSIBLE FOR PROVIDING ADEQUATELY MAINTAINED SANITARY FACILITIES.
- CONTRACTOR IS RESPONSIBLE FOR CLEANING ALL MUD AND DIRT DEPOSITED ON THE EXISTING PAVEMENT DUE TO HIS CONSTRUCTION ACTIVITY ON A DAILY BASIS.
- SEDIMENT WILL BE REMOVED FROM BEHIND THE FILTER FABRIC FENCE WHEN IT BECOMES ONE-THIRD OF THE HEIGHT OF THE FENCE.
- AT COMPLETION OF THE CONTRACT, OWNER AND/OR OWNER'S REPRESENTATIVE WITH THE CONTRACTOR SHALL EXAMINE THE POLLUTION PREVENTION SYSTEM BEFORE RELIEVING CONTRACTOR OF HIS MAINTENANCE RESPONSIBILITIES.
- ALTERNATE SEDIMENT CONTROL DEVICES FROM THOSE DETAILED ON THE PLANS AND IN THE CONTRACT DOCUMENTS WILL BE CONSIDERED. ALL ALTERNATES MUST RECEIVE THE OWNER'S FINAL APPROVAL.
- ALL FILTER FABRIC FOR SEDIMENTATION CONTROL DEVICES TO BE MIRA1 3680 OR APPROVED EQUAL.
- CONTRACTOR IS RESPONSIBLE FOR COMPLYING WITH TCEQ SWPP RULES AND REGULATIONS.

PAVING NOTES:

- ALL MATERIALS AND CONSTRUCTION ACTIVITIES SHALL BE IN ACCORDANCE WITH THE PROJECT SPECIFICATIONS TO THE LINES AND GRADES SHOWN ON THE PLANS.
- UPON COMPLETION, ALL PORTIONS OF THE PROJECT SHALL DRAIN. PONDING WATER WILL NOT BE PERMITTED.
- ALL STREETS AND ALLEYS SHALL BE PLACED ON SUBGRADE SCARIFIED. A MINIMUM OF 6" DEEP MIXED WITH 28 LBS/SY OF CEMENT, AND COMPACTED TO 95% STANDARD PROCTOR DENSITY AT 0-4" ABOVE OPTIMUM MOISTURE.
- THE DENSITY TESTING FREQUENCY FOR TREATED SUBGRADE AND HMA SURFACE COURSE WILL BE A MINIMUM OF ONE TEST PER 750 SY OF AREA.
- CONTRACTOR TO ENSURE ALL SANITARY SEWER MANHOLES AND WATER VALVES ARE VISIBLE. CONTRACTOR TO ADJUST MANHOLE RIMS & WATER VALVES TO MATCH TOP OF NEW PAVEMENT.

EXISTING FEATURES		LEGEND		PROPOSED FEATURES	
○	BOLLARD	—	ASPHALT PAVEMENT	—	ASPHALT PAVEMENT REPAIR
⊕	FIRE HYDRANT	—	CONCRETE PAVEMENT	—	SILT FENCE OR FILTER STONE
⊕	GAS METER	—	CHALKLINE FENCE	—	CURB INLET PROTECTION
⊕	GUY WIRE	—	GRAVEL PAVEMENT		
⊕	IRON ROD	—	OVERHEAD ELECTRIC		
⊕	LIGHT POLE	—	SANITARY SEWER LINE		
⊕	MALIBOX	—	STORM SEWER LINE		
⊕	NAIL	—	WATER LINE		
⊕	POWER POLE				
⊕	SANITARY SEWER CLEANOUT				
⊕	SANITARY SEWER MANHOLE				
⊕	STORM SEWER MANHOLE				
⊕	TRAFFIC SIGN				
⊕	UNDERGROUND TELEPHONE				
⊕	WATER METER				
⊕	WATER VALVE				
X	CUT				



CAUTION! EXISTING UTILITIES

CONTRACTOR SHOULD CALL TEXAS 811 PRIOR TO BEGINNING ANY CONSTRUCTION ACTIVITIES FOR EXISTING UTILITY LOCATIONS, EXISTING UTILITIES AND UNDERGROUND FACILITIES INDICATED ON THESE PLANS HAVE BEEN LOCATED FROM REFERENCE INFORMATION. IT IS THE RESPONSIBILITY OF THE CONTRACTOR TO VERIFY BOTH HORIZONTALLY AND VERTICALLY THE LOCATION OF ALL EXISTING UTILITIES AND UNDERGROUND FACILITIES PRIOR TO CONSTRUCTION AND TO TAKE NECESSARY PRECAUTIONS IN ORDER TO PROTECT ALL FACILITIES ENCOUNTERED. THE CONTRACTOR SHALL PRESERVE AND PROTECT ALL EXISTING UTILITIES FROM DAMAGE DURING CONSTRUCTION.

BENCHMARKS:

CP1: NAIL N: 6787871.49 E: 2198818.20 ELEV: 648.97	CP3: X CUT N: 6787333.86 E: 2197599.18 ELEV: 632.21
CP2: X CUT N: 6767709.40 E: 2197174.00 ELEV: 647.98	

CITY OF GLEN ROSE
GLEN ROSE NE BERNARD SIDEWALK IMPROVEMENTS
GENERAL NOTES

No.	DATE	REVISION	BY

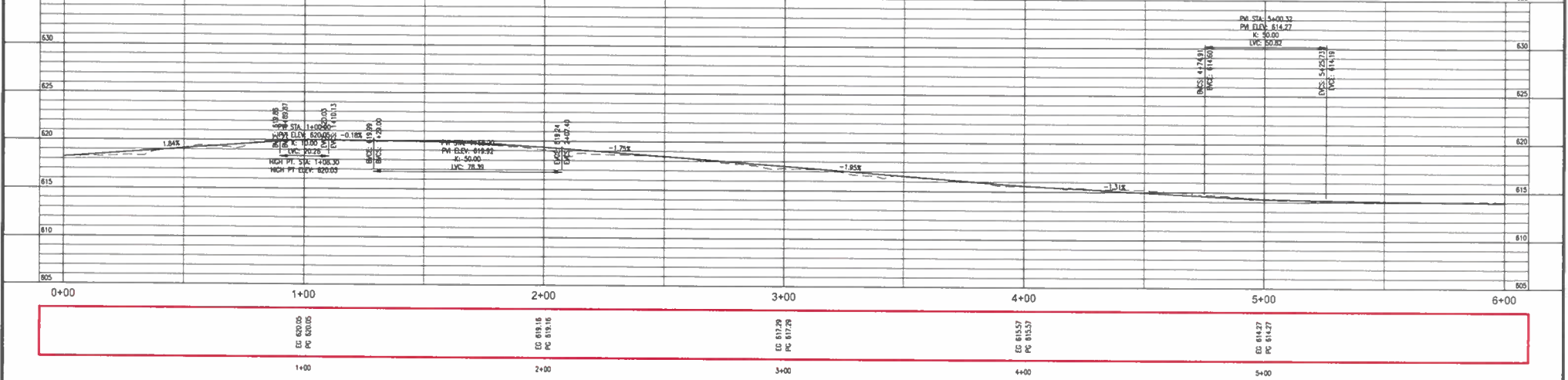
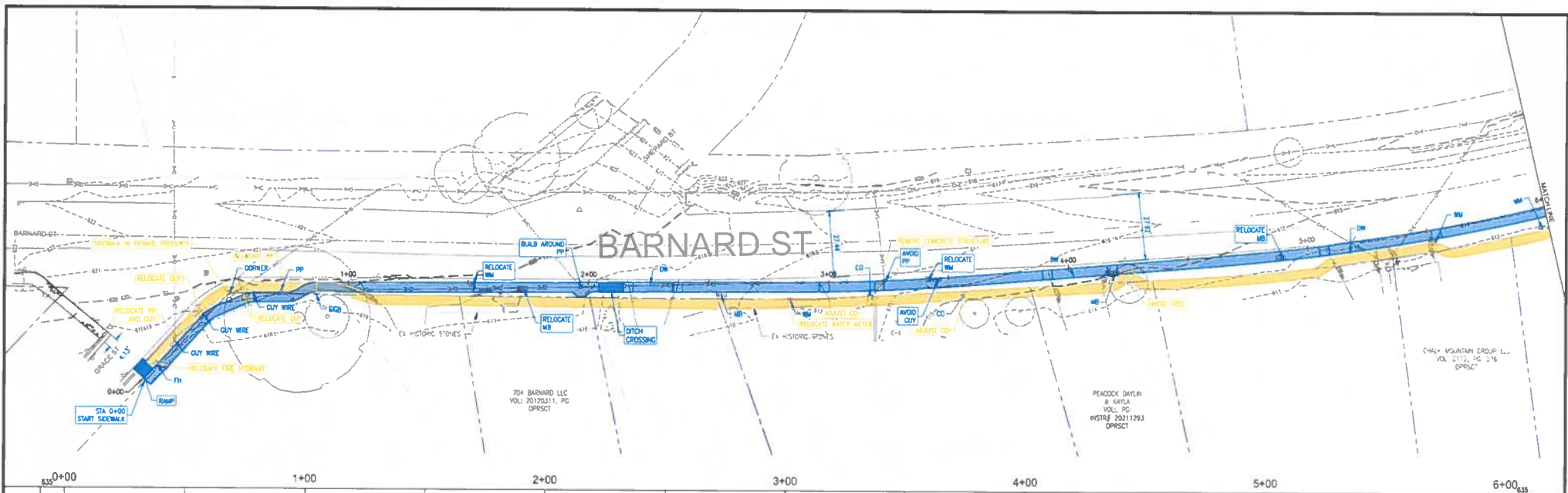
FREEMAN-MILLICAN, INC.
ENGINEERS - ARCHITECTS - PLANNERS

PREPARED BY:
VICTOR ACUY, P.E.
NO. 114152 ON
06.17.24

PRELIMINARY

THIS PLAN SHEET IS ISSUED FOR INTERIM REVIEW ONLY AND IS NOT FOR BIDDING, CONSTRUCTION OR PERMIT PURPOSES.

SHEET
G-102
SHEET 111 OF 11



CAUTION! EXISTING UTILITIES
 CONTRACTOR SHOULD CALL TEXAS 811 PRIOR TO BEGINNING ANY CONSTRUCTION ACTIVITIES FOR EXISTING UTILITY LOCATIONS. EXISTING UTILITIES AND UNDERGROUND FACILITIES INDICATED ON THESE PLANS HAVE BEEN LOCATED FROM REFERENCE INFORMATION. IT IS THE RESPONSIBILITY OF THE CONTRACTOR TO VERIFY BOTH HORIZONTALLY AND VERTICALLY THE LOCATION OF ALL EXISTING UTILITIES AND UNDERGROUND FACILITIES PRIOR TO CONSTRUCTION AND TO TAKE NECESSARY PRECAUTIONS IN ORDER TO PROTECT ALL FACILITIES INDICATED. THE CONTRACTOR SHALL PRESERVE AND PROTECT ALL EXISTING UTILITIES FROM DAMAGE DURING CONSTRUCTION.

BENCHMARKS:

CP1:	CP3:
M:	N:
E:	E:
ELEV:	ELEV:

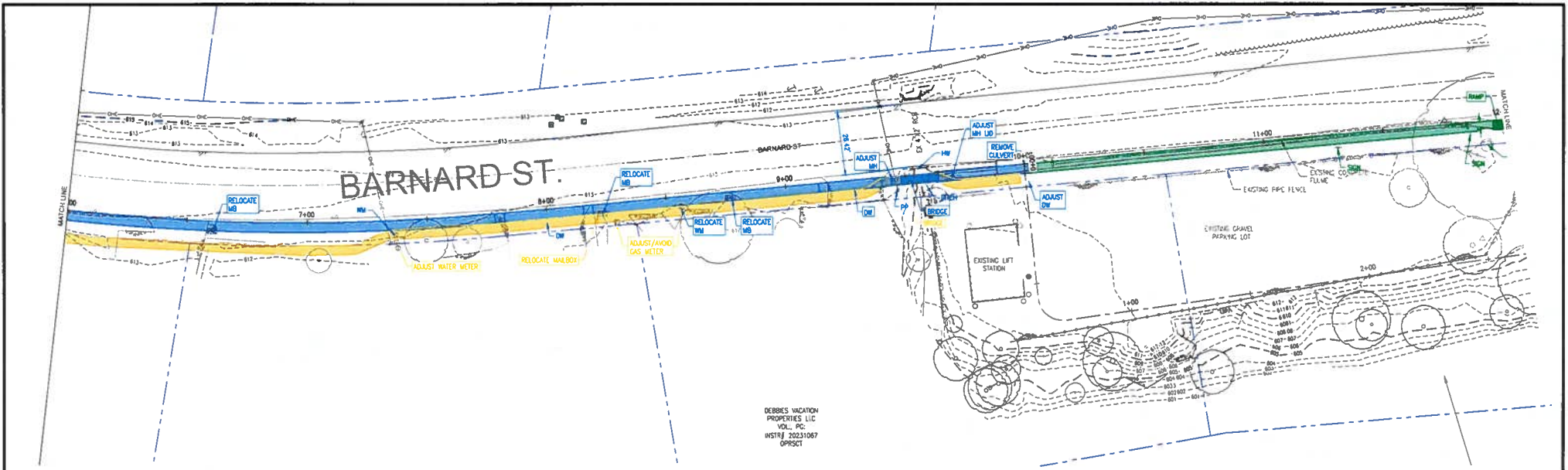
CITY OF GLEN ROSE
 GLEN ROSE NE BARNARD SIDEWALK IMPROVEMENTS
 SIDEWALK PLAN OPTION 1 - STA 0+00 TO STA 6+00

No.	DATE	REVISION	BY

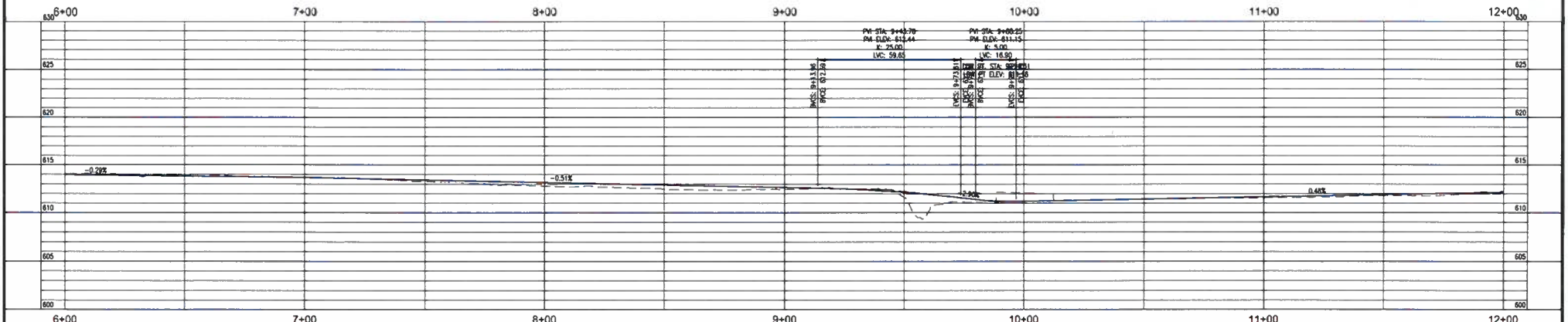
PRELIMINARY
 IF SHEET IS IN 11'x17' FORMAT, CHANGING AUC 47 1/3 OF NOTED SCALE
 PROJECT No. 24018
 DESIGNED: TAJ
 DRAWN: VLA
 CHECKED: VLA
 SHEET C-101
 SHEET 111 OF 111

THIS PLAN SHEET IS ISSUED FOR INTERIM REVIEW ONLY AND IS NOT FOR BIDDING, CONSTRUCTION OR PERMIT PURPOSES.
 PREPARED BY: VICTOR ADU, P.E.
 No. 114152 DW
 06.17.24





DEBBES VACATION
PROPERTIES LLC
VOL. PC
INST# 20221067
PROJECT



6+00	7+00	8+00	9+00	10+00	11+00	12+00
EG 613.69 PC 613.69	EG 612.79 PC 612.79	EG 612.45 PC 612.45	EG 612.29 PC 612.29	EG 611.56 PC 611.56		

CAUTION! EXISTING UTILITIES
CONTRACTOR SHOULD CALL TEXAS 811 PRIOR TO BEGINNING ANY CONSTRUCTION ACTIVITIES FOR EXISTING UTILITY LOCATIONS. EXISTING UTILITIES AND UNDERGROUND FACILITIES INDICATED ON THESE PLANS HAVE BEEN LOCATED FROM REFERENCE INFORMATION. IT IS THE RESPONSIBILITY OF THE CONTRACTOR TO VERIFY BOTH HORIZONTALLY AND VERTICALLY THE LOCATION OF ALL EXISTING UTILITIES AND UNDERGROUND FACILITIES PRIOR TO CONSTRUCTION AND TO TAKE NECESSARY PRECAUTIONS IN ORDER TO PROTECT ALL FACILITIES ENCOUNTERED. THE CONTRACTOR SHALL PRESERVE AND PROTECT ALL EXISTING UTILITIES FROM DAMAGE DURING CONSTRUCTION.

BENCHMARKS:
CP1:
N:
E:
ELEV:
CP2:
N:
E:
ELEV:

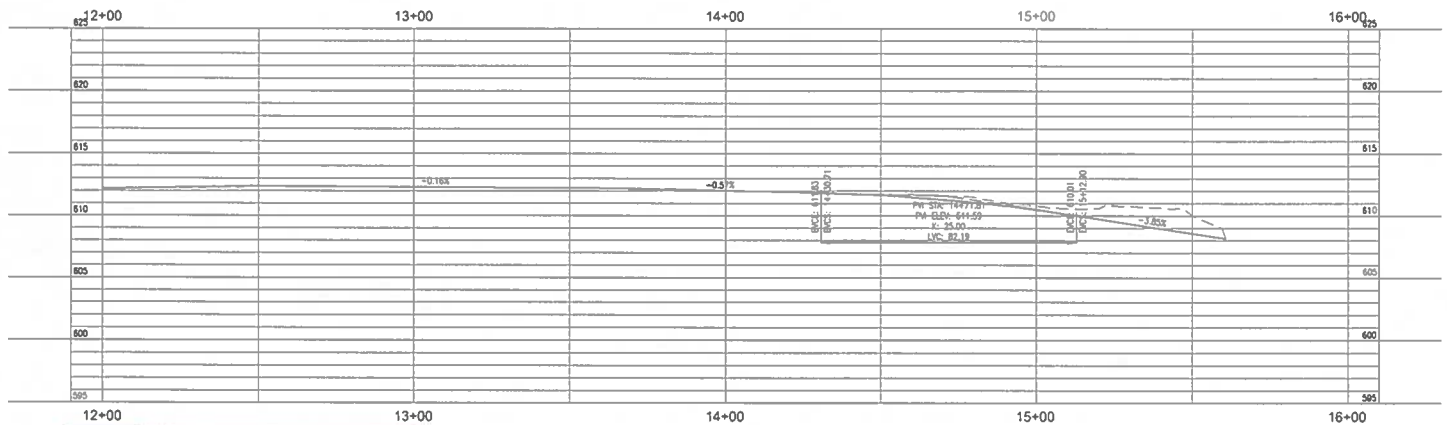
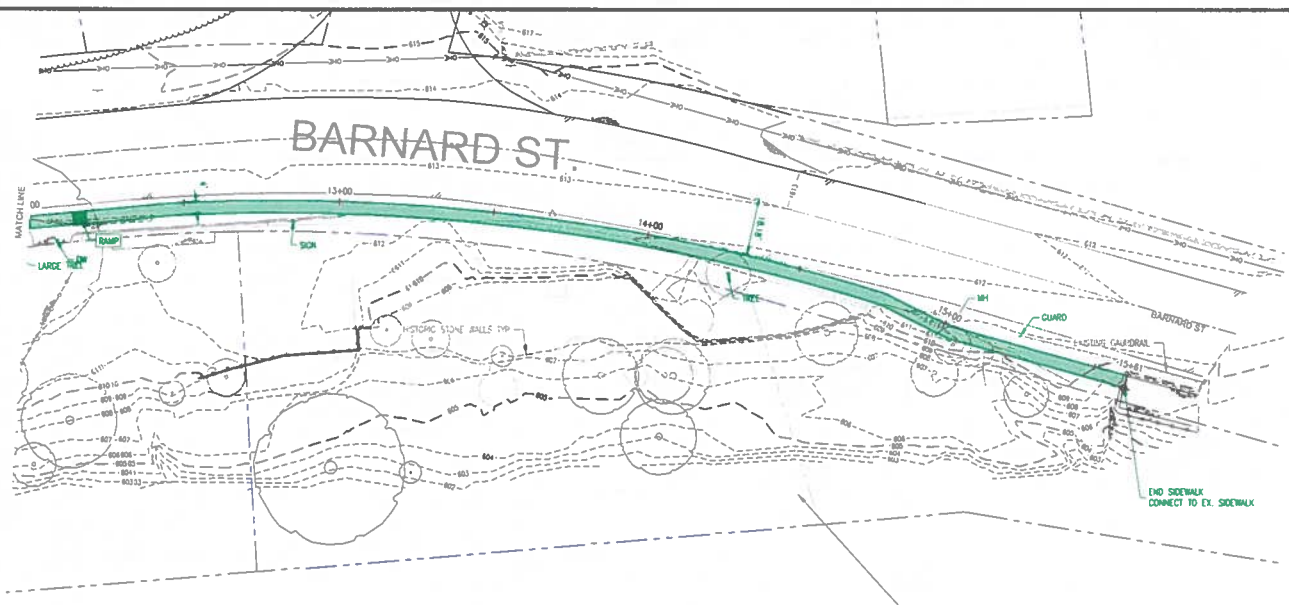
CITY OF GLEN ROSE
GLEN ROSE NE BERNARD SIDEWALK IMPROVEMENTS
SIDEWALK PLAN OPTION 1 - STA 6+00 TO STA 12+00

No.	DATE	REVISION	BY

FREEMAN-MILLICAN, INC.
ENGINEERS - ARCHITECTS - PLANNERS

PREPARED BY:
VICTOR ACUY, P.E.
No. 114152 ON
08-12-24

PRELIMINARY
IF SHEET IS IN 11"X17" FORMAT, DIMENSIONS ARE AT 1/2" OF HORIZONTAL SCALE.
PROJECT No. 24018
DESIGNED: FVA
DRAWN: VLA
CHECKED: VLA
SHEET
C-102
SHEET III OF III



12+00	13+00	14+00	15+00	16+00
	EG 612.33 PC 612.36	EG 612.04 PC 612.00	EG 615.78 PC 616.07	

CAUTION! EXISTING UTILITIES
 CONTRACTOR SHOULD CALL TEXAS 811 PRIOR TO BEGINNING ANY CONSTRUCTION ACTIVITIES FOR EXISTING UTILITY LOCATIONS. EXISTING UTILITIES AND UNDERGROUND FACILITIES INDICATED ON THESE PLANS HAVE BEEN LOCATED FROM REFERENCE INFORMATION. IT IS THE RESPONSIBILITY OF THE CONTRACTOR TO VERIFY BOTH HORIZONTALLY AND VERTICALLY THE LOCATION OF ALL EXISTING UTILITIES AND UNDERGROUND FACILITIES PRIOR TO CONSTRUCTION AND TO TAKE NECESSARY PRECAUTIONS IN ORDER TO PROTECT ALL FACILITIES ENCOUNTERED. THE CONTRACTOR SHALL PRESERVE AND PROTECT ALL EXISTING UTILITIES FROM DAMAGE DURING CONSTRUCTION.

BENCHMARKS:

CP1:	CP3:
N:	N:
E:	E:
ELEV:	ELEV:
CP2:	
N:	
E:	
ELEV:	

CITY OF GLEN ROSE
 GLEN ROSE NE BERNARD SIDEWALK IMPROVEMENTS
 SIDEWALK PLAN OPTION 1 - STA 12+00 TO END

No.	DATE	REVISION	BY

FREEMAN-MILLICAN, INC.
 ENGINEERS ARCHITECTS PLANNERS
 PREPARED BY:
 VICTOR ADLEY, P.E.
 No. 116152 ON
 06.17.24

PRELIMINARY
 SHEET # 11 OF 17
 TOTAL SHEETS ARE 17
 PROJECT No. 24018
 DESIGNED: FLM
 DRAWN: VLA
 CHECKED: VLA
 SHEET
C-103
 SHEET 11 OF 17

