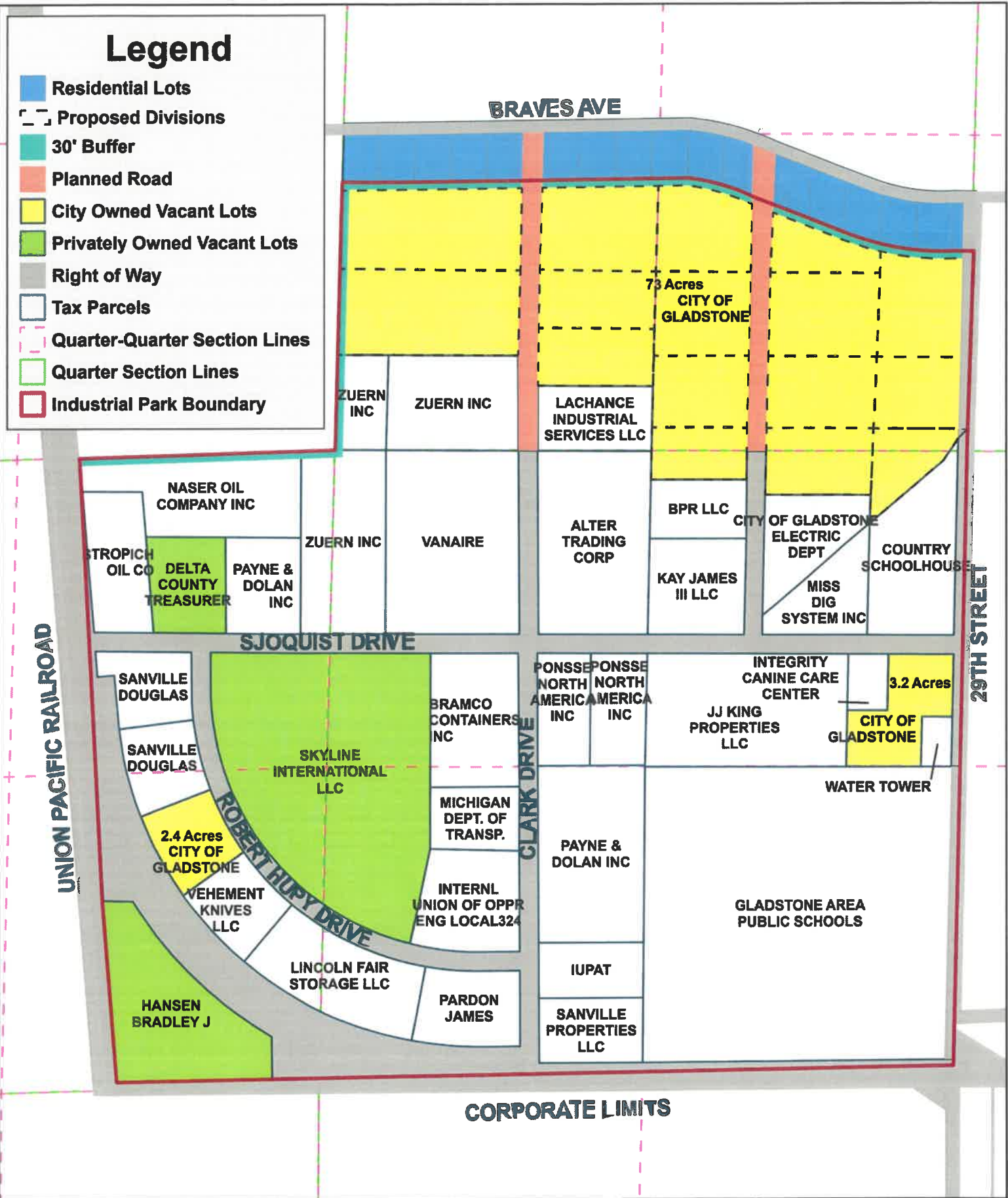
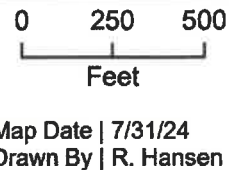


Legend

- Residential Lots
- Proposed Divisions
- 30' Buffer
- Planned Road
- City Owned Vacant Lots
- Privately Owned Vacant Lots
- Right of Way
- Tax Parcels
- Quarter-Quarter Section Lines
- Quarter Section Lines
- Industrial Park Boundary



City of Gladstone
 North Bluff Industrial Park
 Vacant Lots *B*



Colligō GIS

Iron Mountain Office
 1955 Clarke Drive
 Iron Mountain, WI 54854
 (920) 774-0340

Ironwood Office
 200 East Apple Street
 Ironwood, WI 54850
 (920) 932-9948

Green Bay Office
 790 Marquette Lane, Unit 5
 Green Bay, WI 54904
 (920) 264-9404
 Colligō GIS