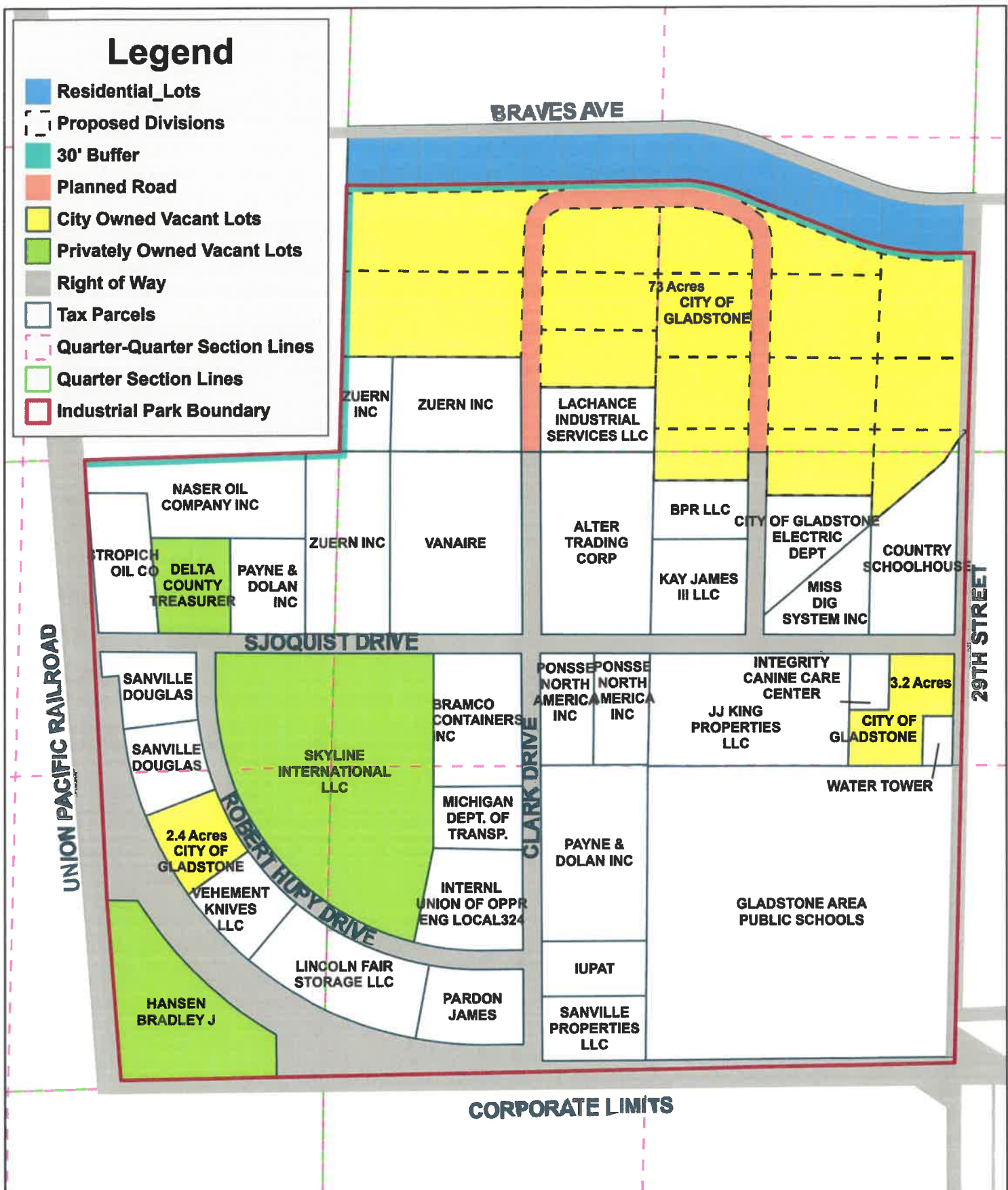
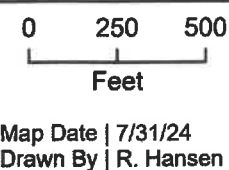


Legend

- Residential_Lots
- Proposed Divisions
- 30' Buffer
- Planned Road
- City Owned Vacant Lots
- Privately Owned Vacant Lots
- Right of Way
- Tax Parcels
- Quarter-Quarter Section Lines
- Quarter Section Lines
- Industrial Park Boundary



City of Gladstone
 North Bluff Industrial Park
 Vacant Lots *A*



Colligō GIS

Main Office: 465 Circle Drive, Iron Mountain, MI, 49801 (906) 771-2447
 Ironwood Office: 100 East Ayr Street, Ironwood, MI, 49838 (906) 932-2028
 Gladstone Office: 790 Marcella Lane, Gladstone, MI, 49831 (906) 244-9404
 Colligo.com