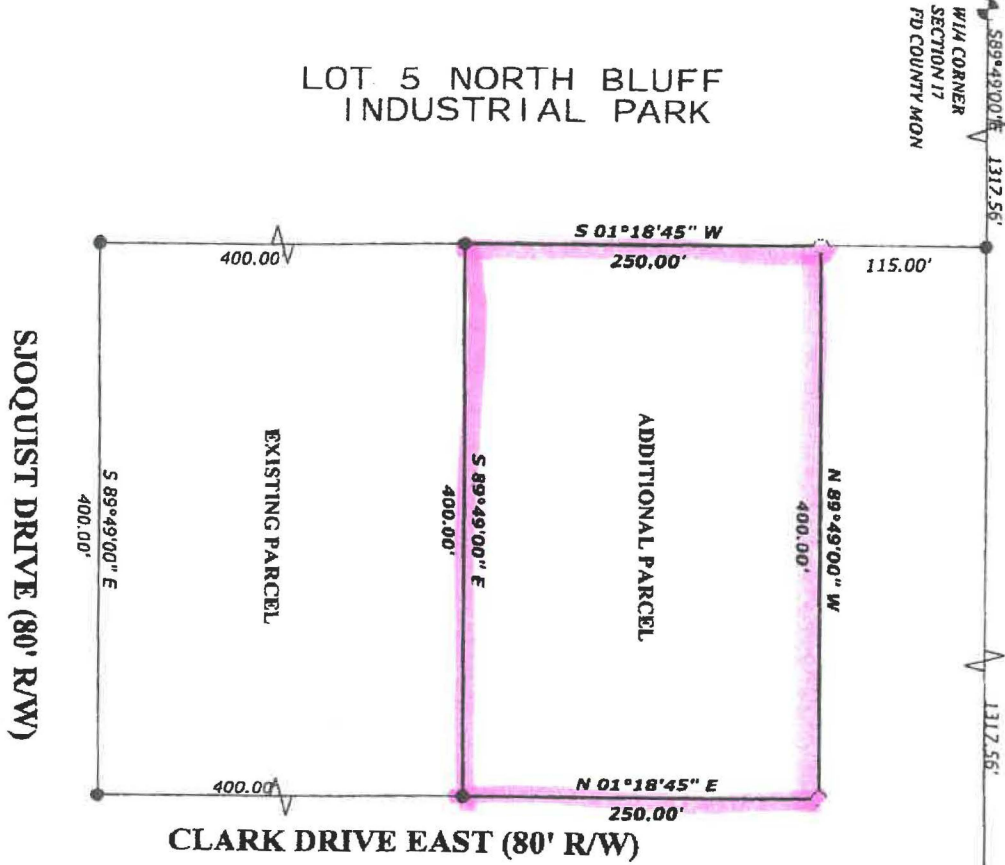


**PLAT OF SURVEY OF
PART OF THE NE1/4 OF THE SW1/4 OF
SECTION 17 T40NR22W
CITY OF GLADSTONE DELTA COUNTY
MICHIGAN**

**LOT 5 NORTH BLUFF
INDUSTRIAL PARK**



PARCEL DESCRIPTION

FROM THE W 1/4 CORNER OF SECTION 17 T40N, R17W, THENCE S89°49'00\" E ALONG THE EAST & WEST 1/4 LINE A DISTANCE OF 1317.56' TO THE NW CORNER OF THE NE 1/4 OF THE SW 1/4 OF SAID SECTION, THENCE S1°18'45\" W ALONG THE WEST LINE OF SAID NE 1/4 OF THE SW 1/4 & THE EAST LINE OF LOT 5 OF THE NORTH BLUFF INDUSTRIAL PARK SUBDIVISION A DISTANCE OF 115.00' TO THE POINT OF BEGINNING, THENCE CONTINUE S1°18'45\" W ALONG SAID WEST LINE A DISTANCE OF 250.00', THENCE S89°49'00\" E PARALLEL WITH SAID 1/4 LINE A DISTANCE OF 400.00', THENCE N1°18'45\" E PARALLEL WITH SAID WEST LINE A DISTANCE OF 250.00', THENCE N89°49'00\" W PARALLEL WITH SAID 1/4 LINE A DISTANCE OF 400.00' TO THE POINT OF BEGINNING CONTAINING 2.30 ACRES



PS Peterson Surveying
1223 N LINCOLN ROAD
ESCANABA, MI. 49829
(906) 789-7878
FAX (906) 789-2729

I, MICHAEL PETERSON, A PROFESSIONAL SURVEYOR IN THE STATE OF MICHIGAN, CERTIFY THAT I HAVE SURVEYED AND MAPPED THE ABOVE PARCEL OF LAND IN ACCORDANCE WITH P.A. 132 OF 1970, THAT THE RATIO OF THE UNADJUSTED FIELD OBSERVATIONS IS WITHIN THE ACCEPTED LIMITS

JOB NUMBER: 0913100
SURVEY FOR: CITY OF GLADSTONE
DATE: 9/22/13
SCALE: 1"=100'

LEGEND
(M) MEASURED
(R) RECORDED
● IRONS FOUND
○ IRONS SET
◻ CONTROL CORNER