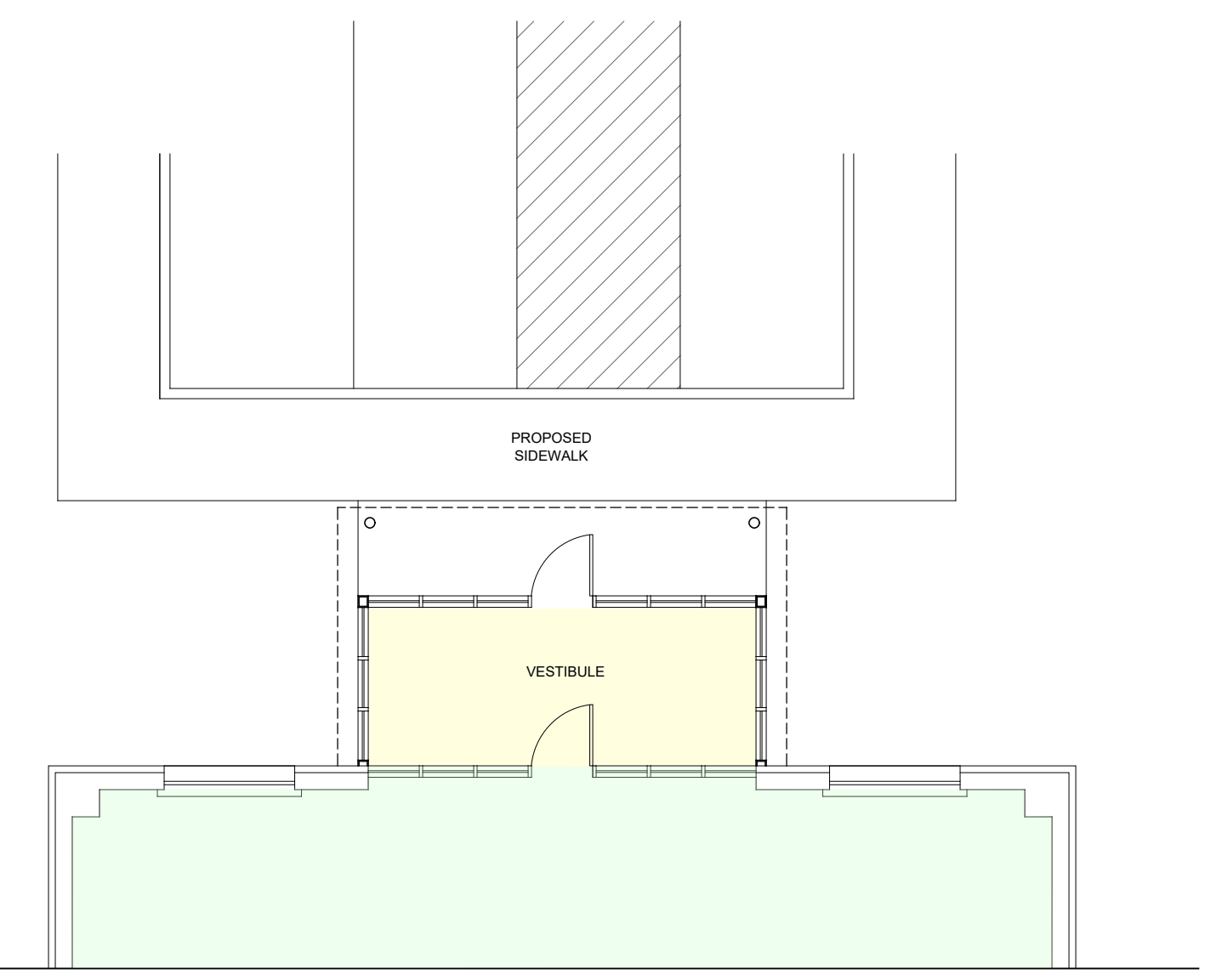
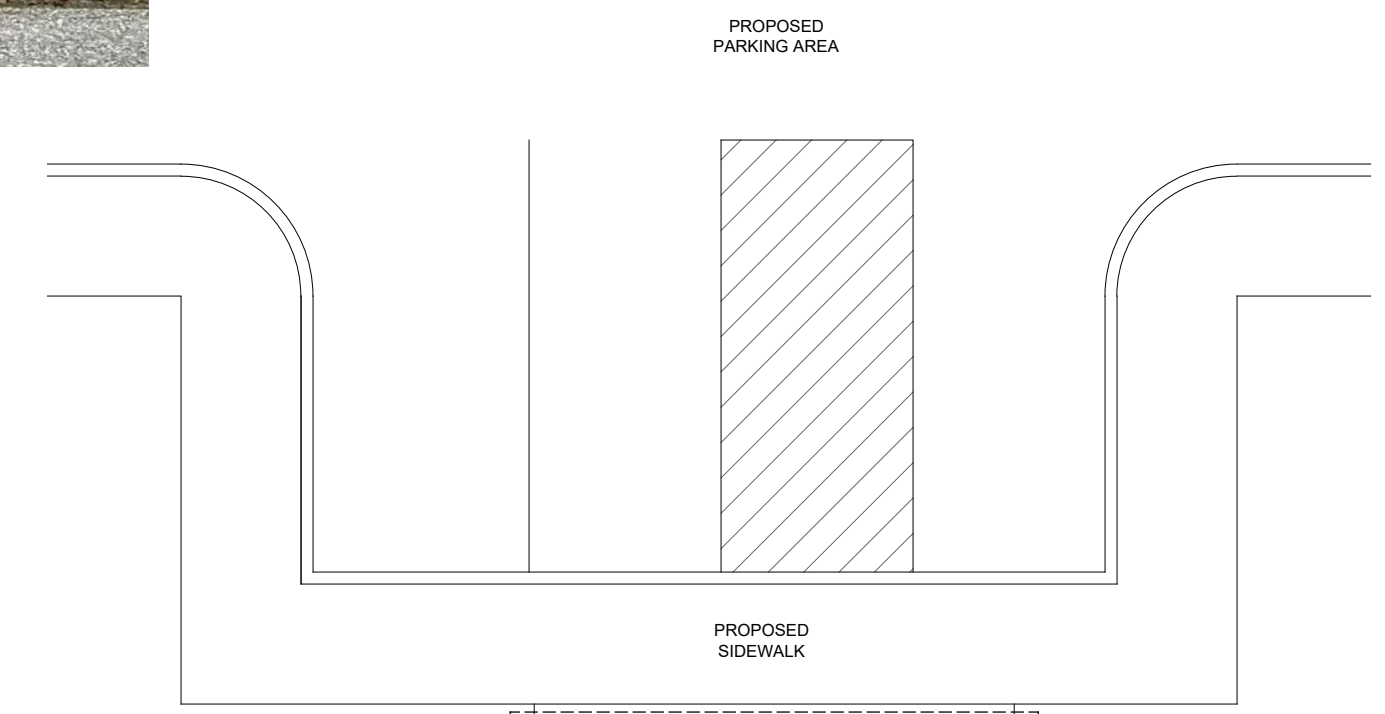


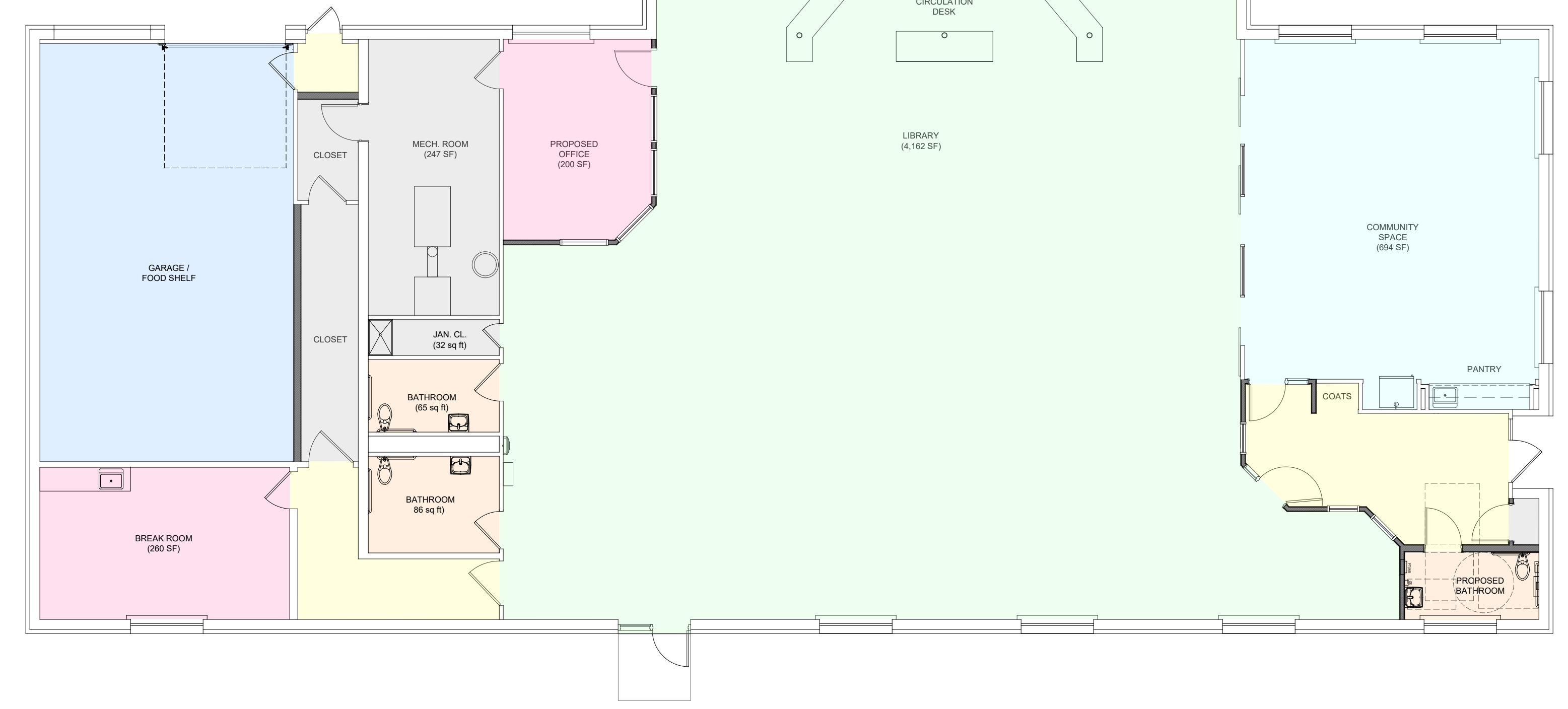


- PROPOSED SCOPE INCLUDES THE FOLLOWING ANTICIPATED ELEMENTS:
- PARKING LOT IMPROVEMENTS INCLUDING ADA VAN ACCESSIBILITY AT NEW LIBRARY ENTRANCE
 - PROPOSED NEW LIBRARY ENTRANCE VESTIBULE
 - LIFE SAFETY & COMPLIANT EGRESS IMPROVEMENTS
 - RELOCATED OFFICE & CIRCULATION DESK
 - UPDATED COMMUNITY ROOM WITH DEDICATED ENTRANCE, BATHROOM, KITCHENETTE
 - NEW FINISHES TO INCLUDE FLOORING, CASEWORK, CEILINGS, LIGHTING & PAINTING
 - IMPROVED HVAC SYSTEMS

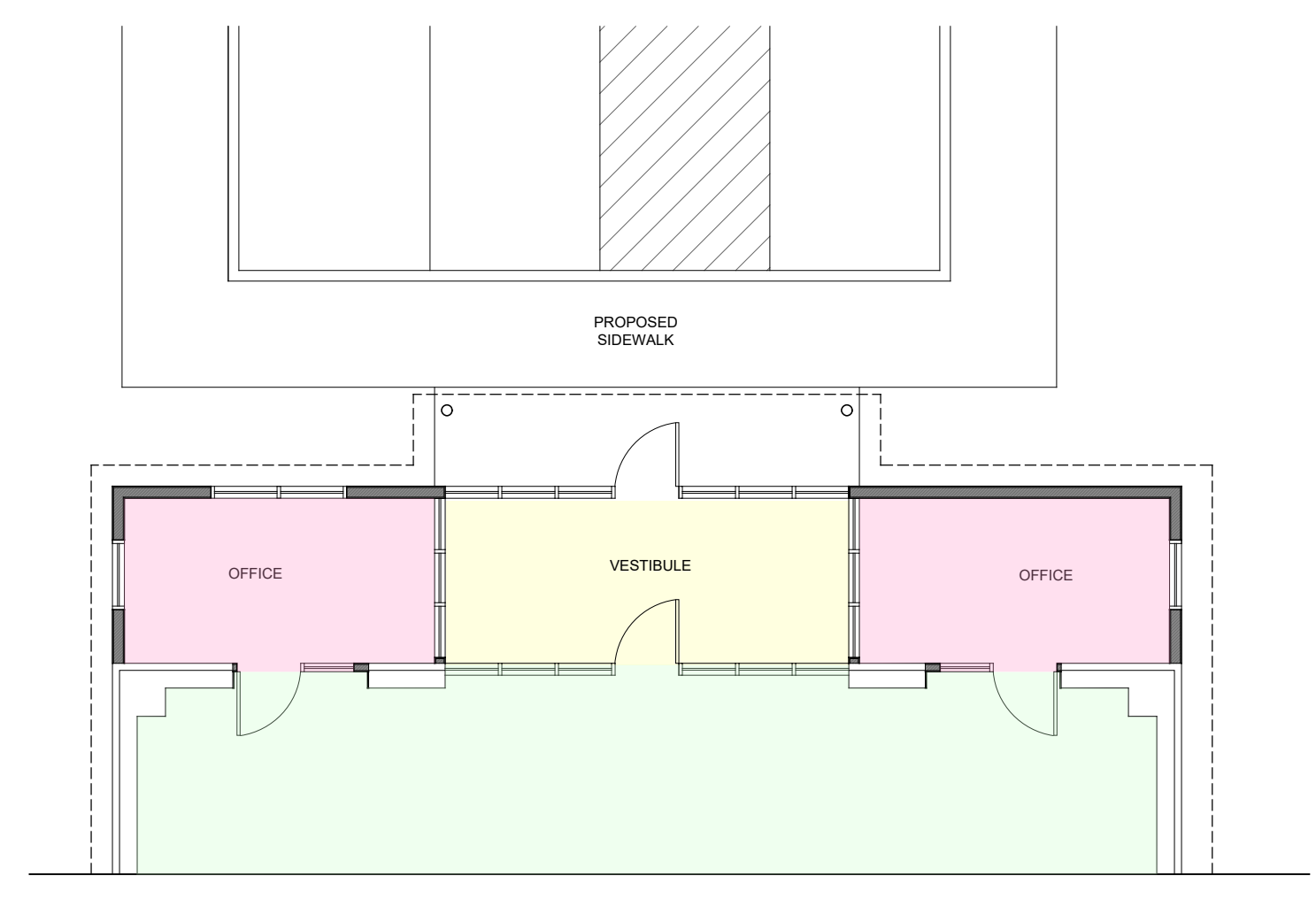
④ PROPOSED VESTIBULE ENTRY
 NTS



② PROPOSED ALTERNATE OPTION @ VESTIBULE
 1/8" = 1'-0"



① PROPOSED FLOOR PLAN
 1/8" = 1'-0"



②A PROPOSED ALTERNATE BUILDING ADDITION
 1/8" = 1'-0"

Scale	AS NOTED
Date	NOVEMBER 2025
# Date Revision	