

TOWN OF GEORGIA, VT  
RECEIVED FOR RECORD

Received for record \_\_\_\_\_ A.D. 202\_\_\_\_  
at \_\_\_\_\_ O'clock \_\_\_\_\_ m and recorded in  
Slide # \_\_\_\_\_  
Attest: \_\_\_\_\_  
Town Clerk

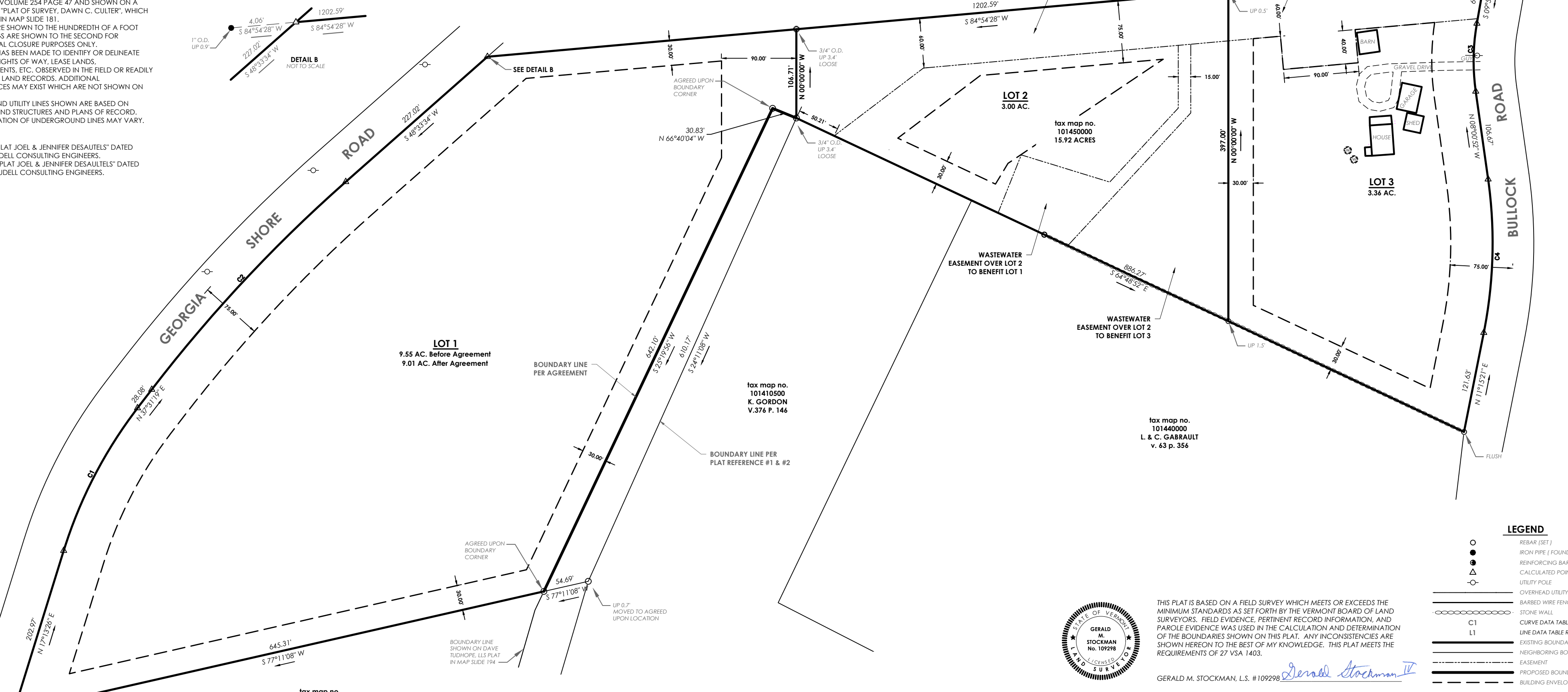
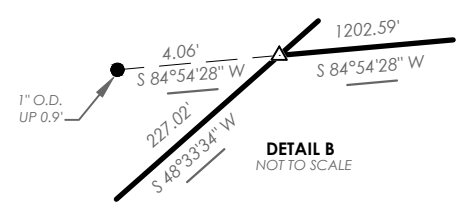
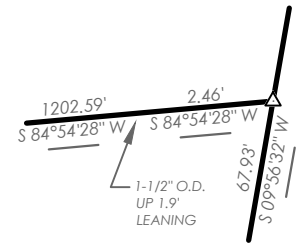
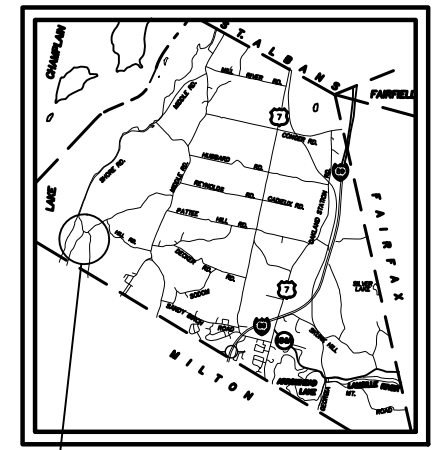
# PREVIOUSLY SUBDIVISION PLAT SUBMITTED FOR REFERENCE ONLY

THIS SUBDIVISION PLAT HAS BEEN APPROVED BY RESOLUTION OF THE DEVELOPMENT  
REVIEW BOARD OF THE TOWN OF GEORGIA, VT, THIS \_\_\_\_\_ DAY OF  
SAID RESOLUTION. \_\_\_\_\_ 202\_\_\_\_, SUBJECT TO THE REQUIREMENTS AND CONDITIONS OF

SIGNED THIS \_\_\_\_\_ DAY OF \_\_\_\_\_ 202\_\_\_\_  
BY \_\_\_\_\_, DRB CHAIR.

NOTES:

- THIS PLAT IS BASED ON DEEDS RESEARCHED IN THE TOWN OF GEORGIA LAND RECORDS AND A CLOSED FIELD TRAVERSE CONDUCTED WITH A TOTAL STATION ON 4/17/16. BEARINGS ARE BASED ON VERMONT STATE PLANE GRID NORTH ESTABLISHED WITH RTK OBSERVATIONS FROM VERMONT CORS STATION VISA.
  - REBAR'S SET ARE NO. 5 REINFORCING BARS WITH ALUMINUM CAPS STAMPED TRUDELL CONSULTING ENGINEERS, LS 109298.
  - THIS PARCEL WAS CONVEYED TO JOEL AND JENNIFER DESAUTELES IN VOLUME 254 PAGE 47 AND SHOWN ON A PLAT ENTITLED "PLAT OF SURVEY, DAWN C. CULTER", WHICH IS RECORDED IN MAP SLIDE 181.
  - DISTANCES ARE SHOWN TO THE HUNDREDTH OF A FOOT AND BEARINGS ARE SHOWN TO THE SECOND FOR MATHEMATICAL CLOSURE PURPOSES ONLY.
  - AN ATTEMPT HAS BEEN MADE TO IDENTIFY OR DELINEATE EASEMENTS, RIGHTS OF WAY, LEASE LANDS, ENCROACHMENTS, ETC. OBSERVED IN THE FIELD OR READILY FOUND IN THE LAND RECORDS. ADDITIONAL ENCUMBRANCES MAY EXIST WHICH ARE NOT SHOWN ON THIS PLAT.
  - UNDERGROUND UTILITY LINES SHOWN ARE BASED ON ABOVE GROUND STRUCTURES AND PLANS OF RECORD. ACTUAL LOCATION OF UNDERGROUND LINES MAY VARY.
- PLAT REFERENCES:
- "BOUNDARY PLAT JOEL & JENNIFER DESAUTELES" DATED 5/4/16 BY TRUDELL CONSULTING ENGINEERS.
  - "SUBDIVISION PLAT JOEL & JENNIFER DESAUTELES" DATED 9/22/21 BY TRUDELL CONSULTING ENGINEERS.



tax map no. 105310000  
C. HOWARD  
v. 188 p. 691

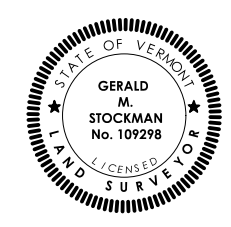
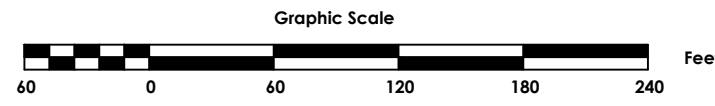
tax map no. 101450000  
15.92 ACRES

tax map no. 101410500  
K. GORDON  
v. 376 P. 146

tax map no. 101440000  
L. & C. GABRAULT  
v. 63 p. 356

tax map no. 105190000  
R. & J. CARMAN  
v. 45 p. 333

CURVE	RADIUS	ARC LENGTH	CHORD LENGTH	CHORD BEARING
C1	547.32	193.90'	192.89'	S 27°22'23" W
C2	1775.26	341.98'	341.45'	S 43°02'28" W
C3	281.53	81.97'	81.63'	S 07°37'50" W
C4	550.80	185.25'	184.38'	N 01°37'15" E



THIS PLAT IS BASED ON A FIELD SURVEY WHICH MEETS OR EXCEEDS THE MINIMUM STANDARDS AS SET FORTH BY THE VERMONT BOARD OF LAND SURVEYORS. FIELD EVIDENCE, PERTINENT RECORD INFORMATION, AND PAROLE EVIDENCE WAS USED IN THE CALCULATION AND DETERMINATION OF THE BOUNDARIES SHOWN ON THIS PLAT. ANY INCONSISTENCIES ARE SHOWN HEREON TO THE BEST OF MY KNOWLEDGE. THIS PLAT MEETS THE REQUIREMENTS OF 27 VSA 1403.

GERALD M. STOCKMAN, L.S. #109298 *Gerald Stockman IV*

**LEGEND**

- REBAR (SET)
- IRON PIPE (FOUND)
- ⊙ REINFORCING BAR (FOUND)
- △ CALCULATED POINT
- UTILITY POLE
- OVERHEAD UTILITY LINES
- BARBED WIRE FENCE
- STONE WALL
- C1 CURVE DATA TABLE REFERENCE
- L1 LINE DATA TABLE REFERENCE
- EXISTING BOUNDARY LINE
- NEIGHBORING BOUNDARY LINE
- EASEMENT
- PROPOSED BOUNDARY LINE
- BUILDING ENVELOPE/SETBACK

### Boundary Line Agreement

### DESAUTELES & GORDON

1333 Bullock Road  
Georgia, Vermont

TRUDELL CONSULTING ENGINEERS  
478 BLAIR PARK ROAD | WILLISTON, VERMONT 05495 802.879.6331 | WWW.TCEVT.COM

Date:	5/12/22
Scale:	1" = 60'
Project Number:	15-212
Drawn By:	CMJ
Surveyed By:	JAD
Date of Survey:	5/12/2022
Field Book:	331
Grid file:	15-212
Sheet:	<b>S1-02</b>

This plat meets the requirements of 27 VSA 1403.

(Signature)

This is an original inkjet on mylar.

This map has been reduced.