

TOWN OF GARDEN CITY  
COMMUNITY GARDENS

CONCEPTUAL PLAN



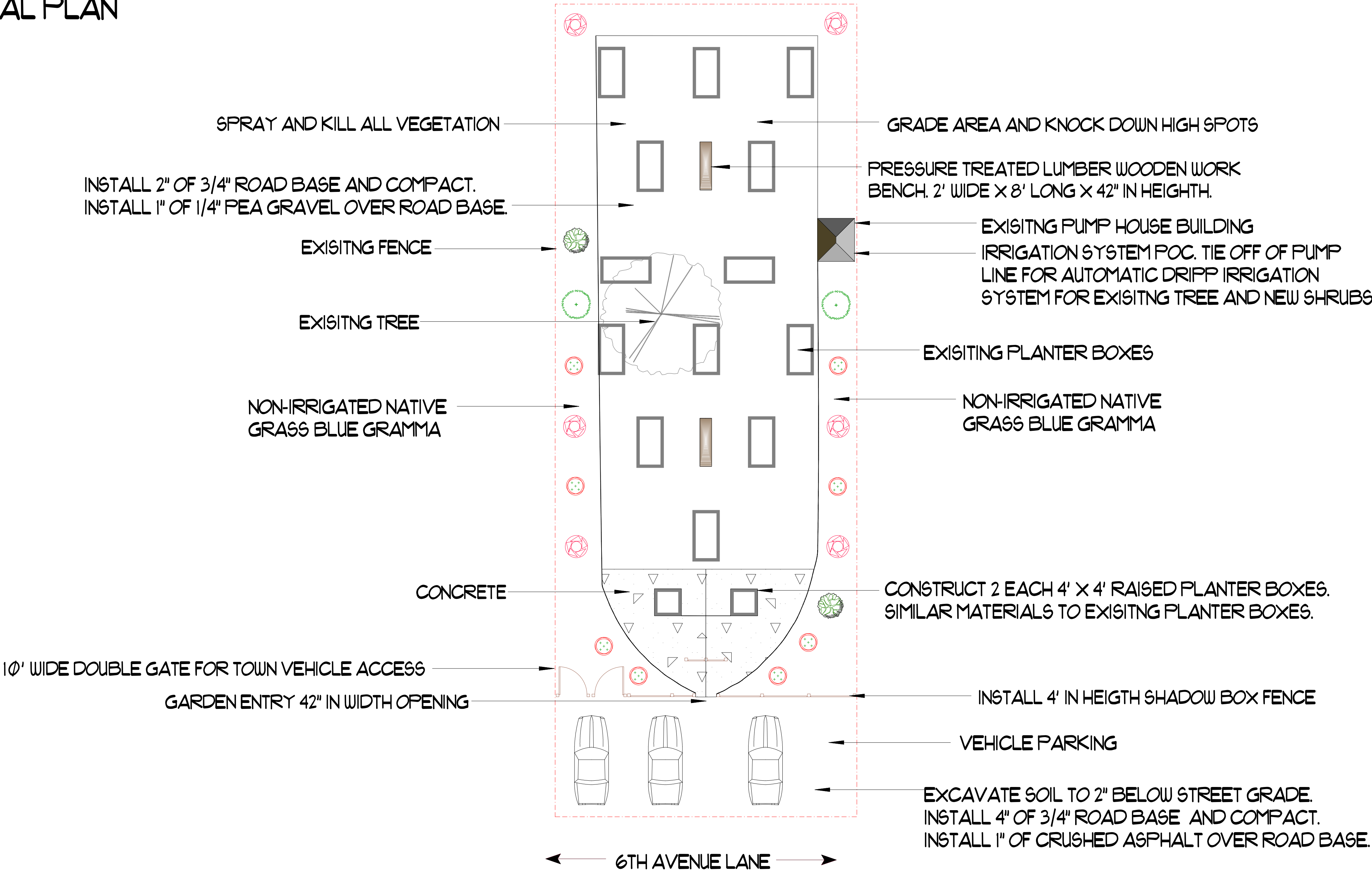
PLAN DRAWN FOR:  
THE TOWN OF GARDEN CITY  
2725 6TH AVNEUE LANE  
GARDEN CITY, COLORADO.

PLAN OWNER AND DRAWN BY:  
ROB SCARZELLO OF:  
PARADISE LANDSCAPE MANAGEMENT  
GREELEY, COLORADO.  
DO NOT EXECUTE PLAN OR COPY IN  
WHOLE OR PART WITHOUT WRITTEN  
PERMISSION OF PLAN OWNER AND  
FINANCIAL COMPENSATION.

THIS PLAN SUPERSEDS ALL PRIOR  
PLANS DRAWN AND ESTIMATED COSTS  
ARE BASED ON THE MOST CURRENT  
PLANS TO DATE.

COPYRIGHT  
PARADISE LANDSCAPE MANAGEMENT  
GREELEY, COLORADO 970-533-0297  
ALL RIGHTS RESERVED AUGUST 2024

SCALE:  
  
1" = 10' WHEN PRINTED  
ON 24" X 36" DRAFT PAPER  
NOT TO SCALE



LEGEND		
	COMMON NAME	QTY
SHRUB, DECIDUOUS		
	BUTTERFLY BUSH	2
	POTENTILLA, GOLD DROP	8
	RUSSIAN SAGE 2	6
	SUMAC, ROCKY MTN.	2

Revision #:  
  
Date: 9/24/2024

Scale:  
  
1" = 10'

Landscape Plan: G-3  
  
TOWN OF GARDEN CITY

Landscape Design by: Robert Scarzello  
  
Paradise Landscape Management