

ANNEXATION IMPACT REPORT

CITY OF FRUITA

July 9, 2024

Application #:	2024-04
Application Name:	Karp Annexation
Application Type:	Annexation
Applicant:	Thomas, Robin and William Karp
Location:	958 17 ½ Road
Zone:	Currently zoned Agricultural Forestry Transitional (AFT –County zoning)
Description:	This is a request to annex approximately 53.59 into the Fruita city limits.

Section 17.17.040 of the Fruita Land Use Code states that any annexation not requiring an election shall be accompanied by an annexation impact report which contains the following elements.

A. Plans of the municipality for extending to or otherwise providing for municipal services;

The Future Land Use Map (FLUM) within The Fruita In Motion: Plan Like A Local Comprehensive Plan shows the subject property within the City’s Urban Growth Boundary. The Urban Growth Boundary was developed with the anticipation of providing the necessary municipal services. With that said, the city does have plans to provide municipal services to this area.

Historically, the City of Fruita has not forced the extension of municipal services. The city has been proactive in planning for future extensions of the city limits with regards to providing municipal services to the areas designated in the Urban Growth Boundary. This includes the municipal services provided by the City of Fruita (sanitary sewer and police).

B. The City of Fruita's anticipated financing of the extension of services;

The City of Fruita will not be financing the extension of services (water, sewer, gas, etc.) to the subject property at this time.

C. The special districts included in the territory to be annexed;

No special districts are included within the territory to be annexed. Below are the agencies or entities that have taxing authority over the territory to be annexed. These agencies have been notified of the annexation application.

1. Lower Valley Fire Protection District.
2. Mesa County School District 51.
3. Grand Valley Irrigation Company.
4. Grand Valley Mosquito Control District.
5. Mesa County Public Library District.
6. Grand Valley Drainage District.
7. Colorado River Water District.
8. Library District.
9. Mesa County Social Services.

D. The effect of annexation on the public school district system including the estimated number of students generated and capital construction required to educate each student;

The school district boundaries for Shelledy Elementary School, Fruita Middle School, Fruita 8/9, and Fruita Monument High School already include the subject property. This implies that no new impacts on the school system would be generated from this annexation application. The impacts to the school district system will be evaluated by the Mesa County Valley School District when this property develops. The School District has been made aware of this annexation.

E. Traffic/pedestrian/bicycle impacts;

Traffic, pedestrian and bicycle impacts should not change with the annexation of the subject property. Traffic, pedestrian and bicycle impacts will remain the same.

F. Wastewater, water, drainage, and irrigation impacts, and;

Impacts on these facilities shouldn't change with the annexation itself. When the property develops, necessary regulations from review agencies will be reviewed with a land development application.

G. Other relevant information as required by the Community Development Department.

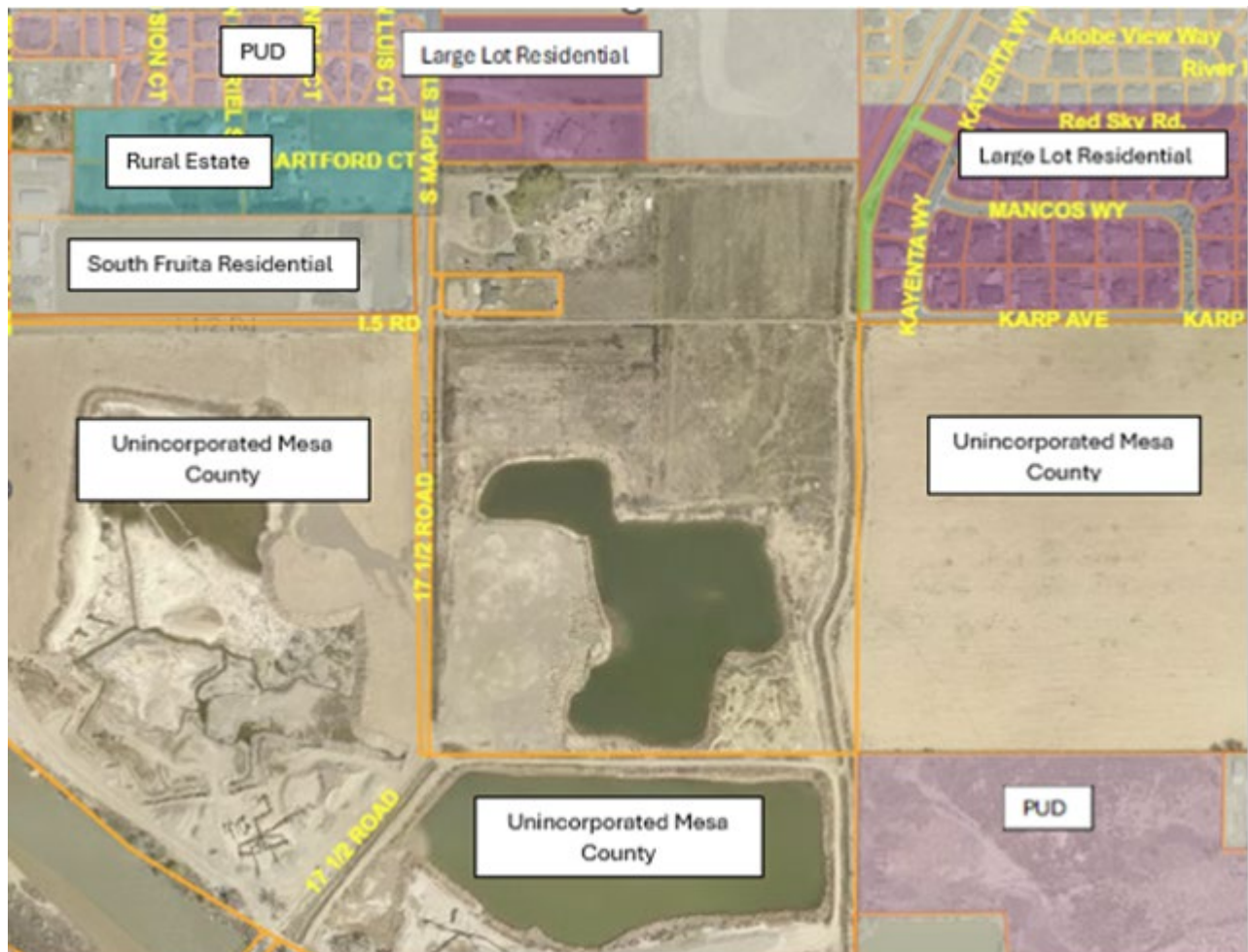
Review Agencies:

1. Xcel Energy
2. Grand Valley Power Company
3. Charter Communications
4. Century Link

5. Ute Water
6. Grand Valley Drainage District
7. Grand Valley Irrigation Company
8. Mesa County Community Development Department
9. Fruita Building Department
10. Mesa County Surveyor
11. Mesa County Valley School District (School District 51)
12. 5-2-1 Drainage Authority
13. Lower Valley Fire Protection District
14. Grand River Mosquito District

Map Exhibits:

Present City boundary



Proposed City Boundary set forth in the Future Land Use Map (FLUM)

Source: City of Fruita
Comprehensive Plan Fruita
In Motion: Plan Like A
Local. Chapter 3, Page 29.
Approved by Resolution
2020-09

