



S | S
— —
4 | A

Safe Streets and Roads for All (SS4A) Action Plan Grant

Fiscal Year 2022



FRUITA
COLORADO

CITY OF
Grand Junction
COLORADO



MESA
COUNTY



“Traffic fatalities are a public health crisis affecting all road users”

~U.S. Department of Transportation

Traffic Fatalities in Mesa County 2016-2020

79

Fatalities in 76 Crashes

108

Vehicles Involved

149

Persons Involved

50

Motorist
Fatalities

11

Pedestrian/Bicyclist
Fatalities

18

Motorcyclist
Fatalities

Traffic Fatalities

2020



2019



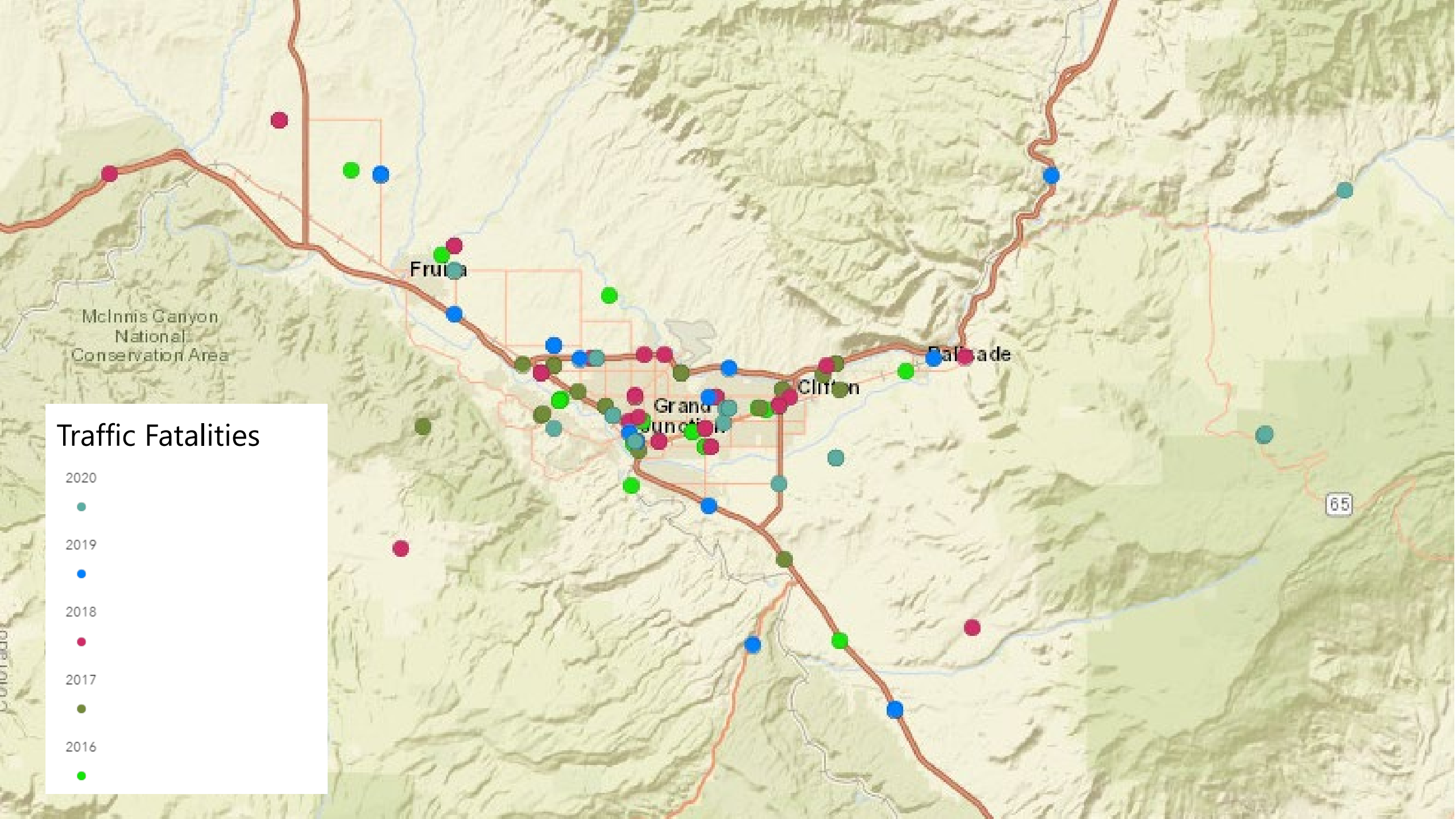
2018



2017



2016



Mesa County Among Highest Traffic Fatality Counties in Colorado

	Population 2020 Census	Fatality Crash Rate per 100,000 population	State Fatality Crash Rank	Suspected Serious Injury Crash Rate per 100,000 population	State Suspected Serious Injury Rank
Pueblo	168,162	15.3	1	41.4	6
Weld	328,981	15.2	2	41.4	5
Adams	519,572	10.4	3	48.5	3
Mesa	155,703	9.8	4	41.0	7
El Paso	730,395	8.8	5	33.3	9

Colorado Counties with a Population 100,000+
Source: 2016-2020 Colorado Crash Data Dashboard - FARS

U.S. Department
of Transportation:
Safe System
Approach (SSA)



SAFE SYSTEM

APPROACH

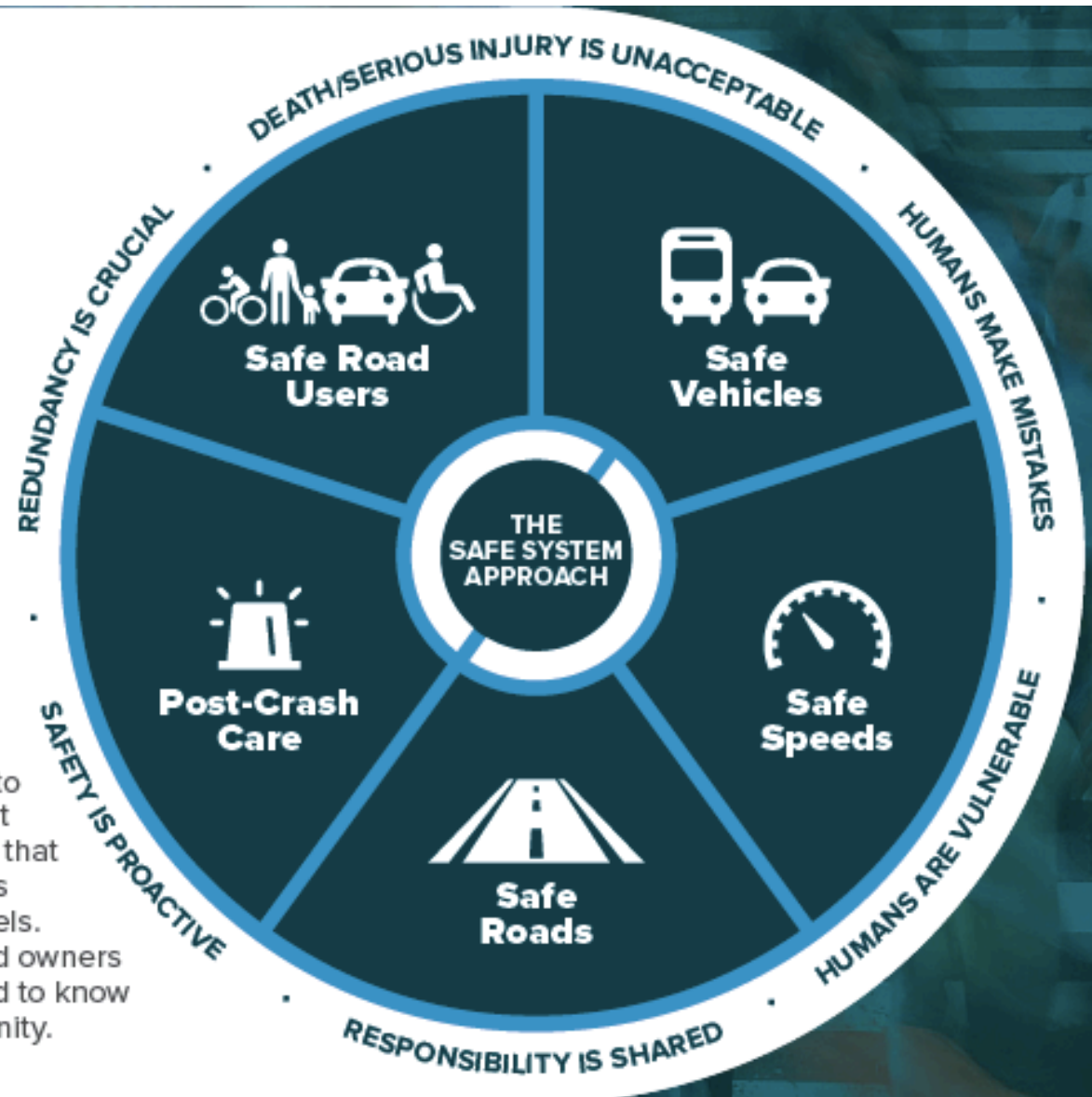
Zero is our goal. A Safe System
is how we get there.

THE SAFE SYSTEM

APPROACH

Zero is our goal. A Safe System is how we will get there.

Imagine a world where nobody has to die from vehicle crashes. The Safe System approach aims to eliminate fatal & serious injuries for all road users. It does so through a holistic view of the road system that first anticipates human mistakes and second keeps impact energy on the human body at tolerable levels. Safety is an ethical imperative of the designers and owners of the transportation system. Here's what you need to know to bring the Safe System approach to your community.



Basics of Roadway Safety

Effective roadway safety practices and strategies:

- Vision Zero
- Towards Zero Deaths
- Complete Streets
- Proven Safety Strategies
- Countermeasures That Work
- Innovative practices and technologies



National Roadway Safety Strategy

USDOT's comprehensive approach to significantly reducing serious injuries and deaths on our Nation's highways, roads, and streets.

- **Sets a vision and goal** for the safety of the Nation's roadways.
- **Adopts the Safe System Approach** principles to guide our safety actions.
- **Identifies new priority actions and notable changes to existing practices** and approaches that target our most significant and urgent problems and are, therefore, expected to have the most substantial impact.
- www.transportation.gov/NRSS



**SS4A Action Plan
Grant Defined by
the U.S.
Department of
Transportation**



“Comprehensive Safety Action Plan” Defined

The term “comprehensive safety action plan” means a plan aimed at preventing transportation-related fatalities and serious injuries in a locality, commonly referred to as a “Vision Zero” or “Toward Zero Deaths” plan, that may include—

- (A) a goal and timeline for eliminating fatalities and serious injuries;
- (B) an analysis of the location and severity of vehicle-involved crashes in a locality;
- (C) an analysis of community input, gathered through public outreach and education;
- (D) a data-driven approach to identify projects or strategies to prevent fatalities and serious injuries in a locality, such as those involving—
 - (i) education and community outreach;
 - (ii) effective methods to enforce traffic laws and regulations;
 - (iii) new vehicle or other transportation-related technologies; and
 - (iv) roadway planning and design; and
- (E) mechanisms for evaluating the outcomes and effectiveness of the comprehensive safety action plan, including the means by which that effectiveness will be reported to residents in a locality.

(From [H.R.3684 - Infrastructure Investment and Jobs Act](#), Sec. 24112)



SS4A Overview: Funding

Funding

- \$1B annually, FY22-26
- At least 40% of annual funding will be awarded for Action Plan Grants and supplemental action plan activities
- Balance of funding available for Implementation Grants

Cost share/match

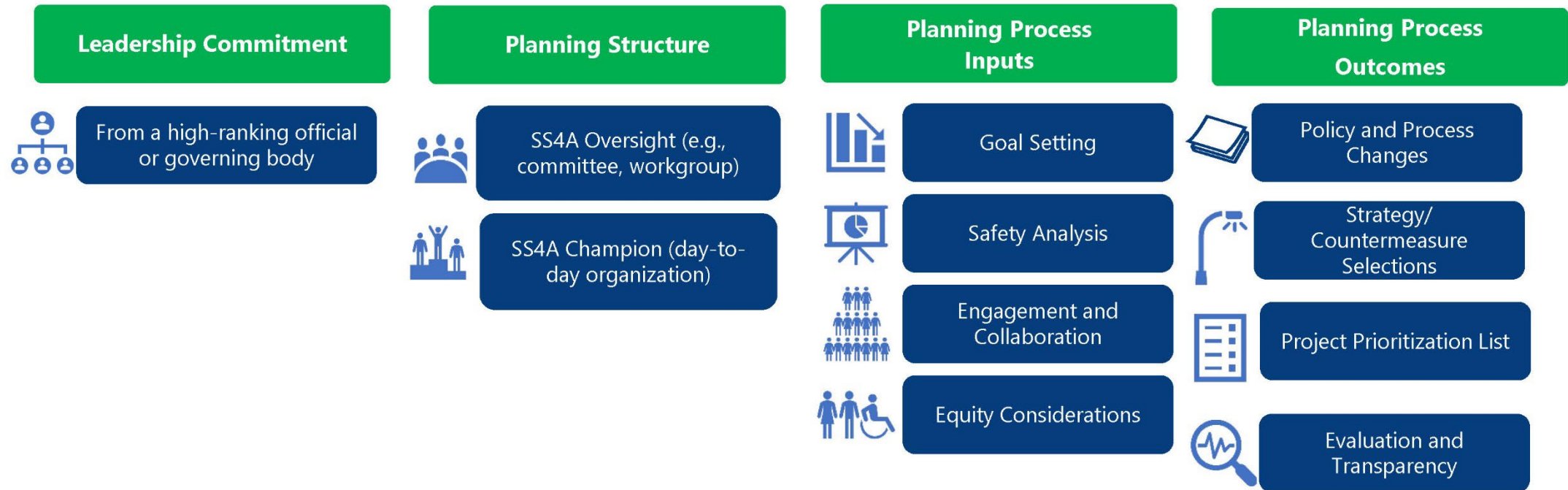
- 80% Federal | 20% local match cost share
- Not more than 15% of funds can be awarded to projects in a single State in a given fiscal year
- *Note: Tribal projects are not considered part of the State cap*

Recipient Types

- Single recipients
- Joint applications
 - Multijurisdictional groups could have varied structures to support local needs



Comprehensive Safety Action Plan Process



**What a SS4A
Action Plan Grant
Could Look Like
for Mesa County**

The logo for SS4A is displayed in a light gray, sans-serif font. It consists of the letters 'S', 'S', '4', and 'A' arranged in a 2x2 grid. A vertical line separates the 'S's from the '4' and 'A', and a horizontal line separates the top row from the bottom row, creating a cross-like structure.

**SS
4A**

Primary Applicants

- Lead Applicant:
 - Mesa County Regional Transportation Planning Office
- Joint Applicants:
 - Mesa County
 - City of Grand Junction
 - City of Fruita
 - Town of Palisade

In Partnership with the Colorado Department of Transportation (CDOT)

Partners Needed for SS4A

- Economic Development
- Education
- Hospitals/Medical
- Law Enforcement
- Local Businesses
- Local Government
- Non-Profits
- Transportation Partners
- ...and more!

FY22 SS4A Action Plan Grant Estimated Activity Cost

1. Project Management and Coordination <ul style="list-style-type: none">• Work Plan• Project Communication and Internal Meetings• Project Graphic Identity• Project Administration	\$35,000
2. Comprehensive Analysis and Solutions Toolbox <ul style="list-style-type: none">• Review Existing Progress, Data, Plans, and Policies• Peer Research• Mapping and Analysis• Planning, Prioritization, Cost Estimates, etc.	\$180,000
3. Robust Stakeholder Outreach and Public Engagement <ul style="list-style-type: none">• Stakeholder, Community, and Council/Commission/Trustee Meetings• Advertising Campaigns/Social Media• Website and/or Online Mapping Tool• Community Survey• Community Demonstrations• Transportation Safety Summit x2	\$110,000
Project Total \$325,000	

Overall Project Budget

	Financial Contribution	% of Total Project Cost
Federal Share	\$260,000	80%
Local Match	\$65,000	20%
Mesa County	\$30,615	9.42%
City of Grand Junction	\$30,615	9.42%
City of Fruita	\$2,665	0.82%
Town of Palisade	\$1,105	0.34%
Project Total	\$325,000	100%

Local match distribution mirrors the Grand Valley MPO funding distribution

Investing in the SS4A Action Plan Grant

- **Action Plan Grants/Safety Plans are the foundation of SS4A** and are required for future federal funding opportunities such as the SS4A Implementation Grant for infrastructure, behavioral, and operational activities
- SS4A represents a **once-in-a-generation funding opportunity** as part of the greater Bipartisan Infrastructure Law (BIL/IIJA), with \$1B slated annually from fiscal years 2022-2026—at least \$5B over the lifetime of the BIL/IIJA