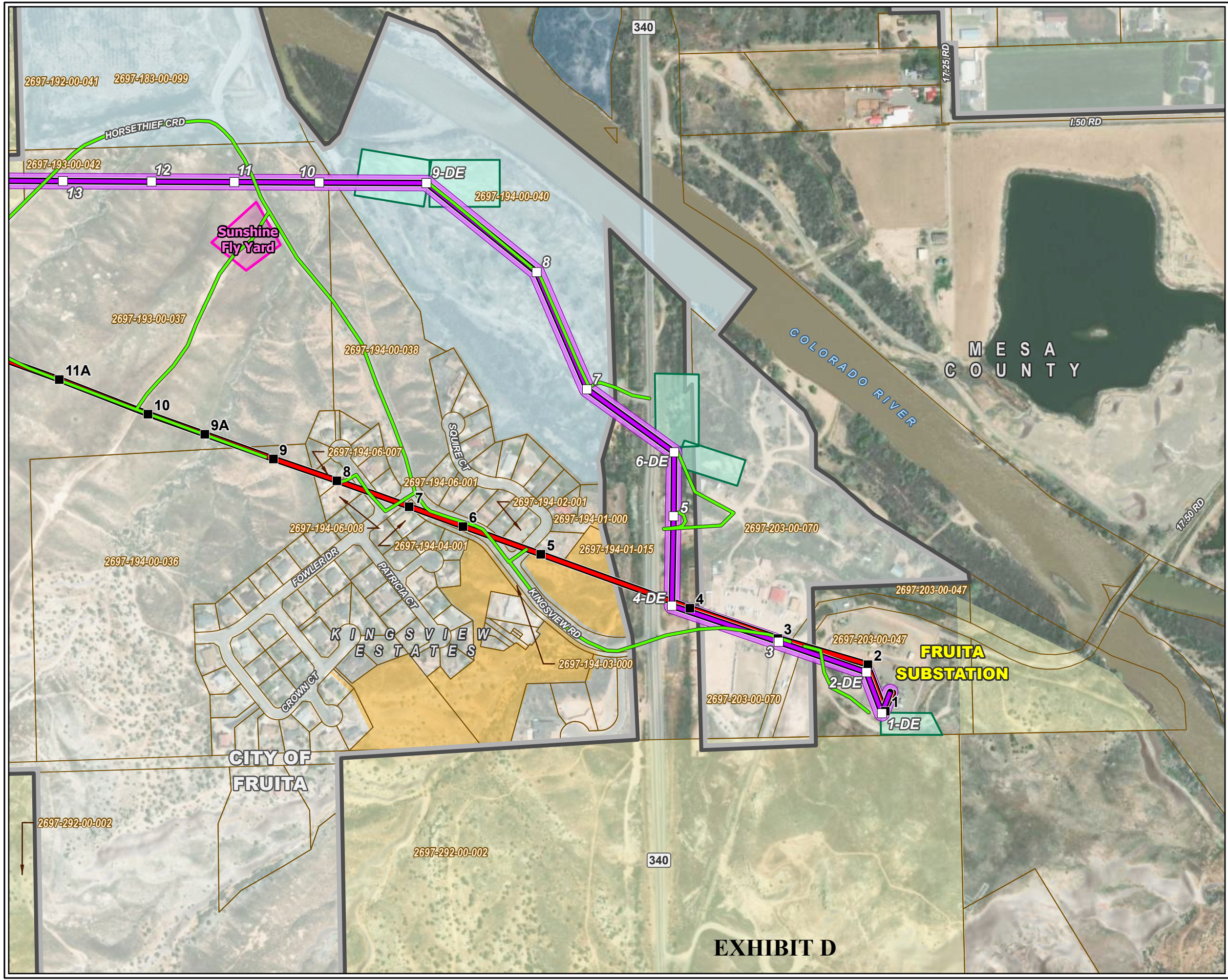


Fruita Site Location
Xcel Energy Circuit 6683
Rebuild Project
 Mesa County, Colorado
 Map 5 of 5



- Legend**
- Existing Poles
 - Proposed Poles
 - Existing 6683 Centerline
 - Proposed 6683 Centerline
 - Access Roads
 - Proposed Right-of-Way
 - Yard
 - Pull Sites

- Surface Management**
- Bureau of Land Management
 - State
 - Local
 - Private Conservation
 - City of Fruita Boundary
 - Parcel Boundaries

Scale: 1:4,800
 Date: 1/10/2024
 Data Sources: Xcel Energy, CNHP, CDOT, City of Fruita, Burns & McDonnell

0 400 800 Feet

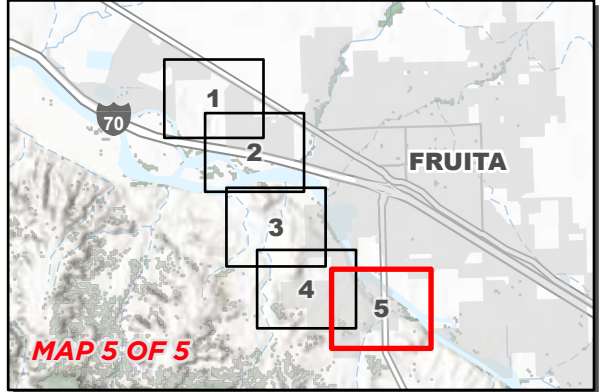


EXHIBIT D

