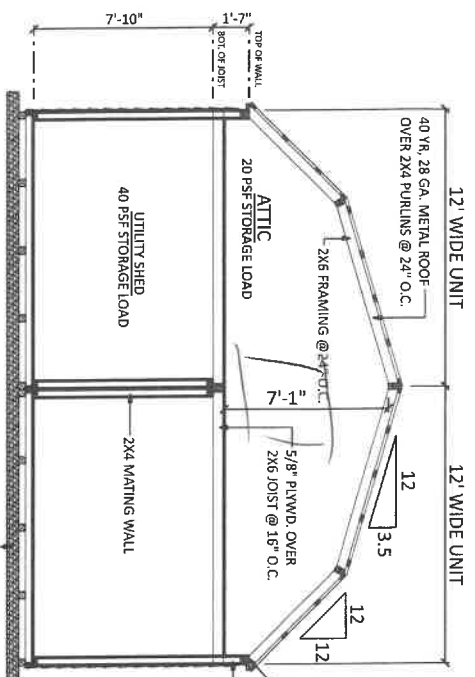
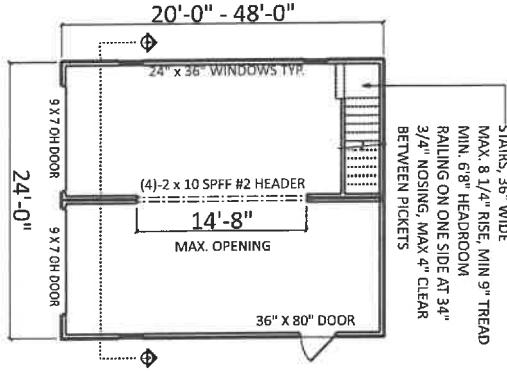
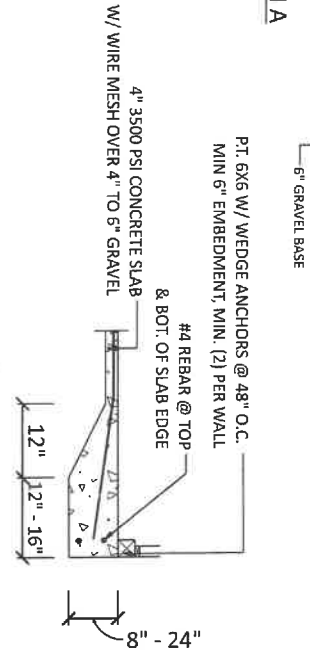


24 X 20
 43,265
 7.5 X 16



NOTE:
 BUILDING IS DESIGNED TO BE FREESTANDING.
 ADDITIONS OR ADJUSTMENTS ARE NOT PERMISSIBLE.
 OBSTRUCTIONS TO SNOW SLIDING OFF ROOF ARE NOT PERMISSIBLE.

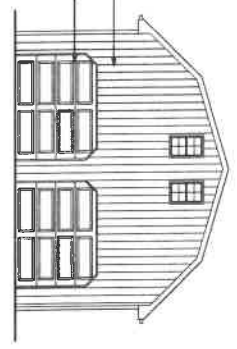
FLOOR SYSTEM
 OPTION 1 - 5/8" PLYWOOD OVER 2X4 FLOOR JOIST @ 16" O.C. OVER 4X4 PT SKIDS @ 36" O.C.
 OPTION 2 - 3/4" PT. PLYWOOD OVER 2X4 FLOOR JOIST @ 12" O.C. OVER 4X4 PT SKIDS @ 36" O.C.



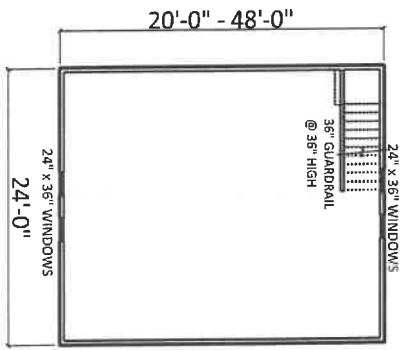
SLAB EDGE AT FLOORLESS OPTION

FIRST FLOOR PLAN

- BUILDING CODE REVIEW**
- OCCUPANCY CLASSIFICATION: UTILITY SHED
 - CONSTRUCTION TYPE: TYPE V-4B
 - FIRE SEPERATION: NOT REQUIRED, DETACHED
 - DISTANCE SEPERATION: 10' MIN.
- DESIGN LOADS**
- ROOF LOAD: 28 PSF (ASCE 7.4 SNOW LOAD REDUCTION FOR METAL ROOF)
 - FLOOR LOAD: 20 PSF FLOOR LOAD (ATTIC STORAGE LOAD)
 - WIND LOAD: 90 SPF
- CLIMATE & GEOGRAPHIC CRITERIA**
- GROUND SNOW LOAD: 40 PSF
 - WIND SPEED: 115 MPH
 - SEISMIC DESIGN CATEGORY: B
 - WEATHERING TERMITE: SEVERE
 - DECAY: MODERATE TO HEAVY
 - WINTER DESIGN TEMP: DECAY
 - FLOOD HAZARD: N/A (UNHEATED)
 - WOOD SPECIES: SEE LOCAL FLOOD MAPS



FRONT ELEVATION



SECOND FLOOR PLAN

<p>BUILDER: Tri-State Gazebo 6653 Bittinger Rd Swanton, MD 21561 Phone: 301-245-4848</p>		
<p>PROJECT: 24' Wide, 2 Story Dutch Barn Utility Shed</p>		
FINAL	3/27/23	E.S.
<p>DRAFTING CONCEPTS 5219 Old Strasburg Rd. Kinzers, PA 17535 P: 717-442-5053 F: 717-370-5925 John@DraftingConceptsLLC.net</p>		
<p>SHEET TITLE: Drawing details</p>		
<p>PROJECT NO.: D235-23</p>		
<p>SCALE: AS NOTED</p>		